

GLENVIEW COMMUNITY CHURCH
MEETING GROUND RULES

We will engage in honest and candid conversation

We will listen carefully to each other

We will respectfully consider alternative points of view

We will focus on the future and issues that matter most

We will stay open to influence and inquiry

We will think for the benefit of total GCC

We will help the group achieve its objectives

**GLENVIEW COMMUNITY CHURCH EXECUTIVE BOARD
MEETING AGENDA
Saturday, August 28, 2010
1:15 PM**

I. Call to Order

II. Clergy Comments

III. Consent Agenda

- A. June Executive Board Minutes
- B. Reports/ Minutes from Ministers, Boards and Others

IV. Treasurer's Report

V. Committee Reports

- A. Leadership

VI. Board Reports

- A. Adult Ed.
- B. Stewardship
- C. Property

VII. Selected Pending Matters

- A. One Worship Service
- B. PMRC Appointment
- C. Health Insurance
- D. Finance

VIII. Congregational Comments

IX. Adjournment & Lord's Prayer

Meeting Reminders:

Planning Committee Mtg.: TBD

Leadership Committee Meeting: October 10

Executive Board Meeting: September 28, 2010

Operating Committee Meeting: TBD

PMRC Meeting: TBD

**EXECUTIVE BOARD MINUTES
GLENVIEW COMMUNITY CHURCH
22 June 2010**

- I. **Call to Order:** The meeting was called to order in the Plymouth Room at 7:00 PM by Moderator, Lloyd Bettis. The roll was recorded silently by the clerk.

Present: Howard Roberts, Pam Keckler, Lloyd Bettis, Bill Dailey, Rob Hevey, Beryl Bills, Kara Clark, Christine Foley, Laura Heyser, Kerry Karth, Scott Lothian, Bob McGee, Julie Tillman for Carolyn Brown, Chris Calandra, Bill Cooper, Glenn Davis, Mark Sawires for Debbie Berg, Margaret Lutz, Tom Lutz, Barb Pollak, Tracy Sawires, Doug Morgan for Phyllis Scott, Pam Riedy for Jim Yagelski

Excused: Constance Filling, Bob Kappus,

Guests: Elizabeth Ciccolini, Susan Mann, Jane Sanderson, Sally Thuresson, Gary Wendt

Opening Reflection: given by Bill Dailey

- II. **Welcome and Introductions:** Lloyd Bettis, Moderator, welcomed the new Executive Board and asked those present to introduce themselves. Members were asked to review the Glenview Community Church Groundrules and Behavioral Covenant, the guiding principles on which the Executive Board meetings will be conducted.
- III. **Clergy Comments:** Pam Keckler's and Howard Roberts' complete reports are included in the Executive Board packet dated June 22, 2010. Howard commented further on the following:
- **email Blasts:** email blasts will be limited to one per week. Requests and information for an email blast must be approved by the ministers and received two weeks prior to being sent.
 - **Single Worship Service:** at the worship and programming retreat held by the ministers and staff on June 15 the possibility of going to one Sunday Service at 9:30 am was discussed. Input was sought from Executive Board members, both pro and con, prior to a vote by the Executive Board at the August 28 Executive Board meeting. Based on the discussion, there was general consensus that having a single service as a trial for one year would be plausible. GCC members will be alerted to the possibility of going to a single service and their input will be sought. Howard will provide for Ex Board members and the congregation the pros and cons of going to one service.
- IV. **Consent Agenda:**
- A. May 18, 2010 Executive Board Minutes
 - B. May 25, 2010 Annual Meeting Minutes
 - C. Minutes and Reports from Ministers, Boards, and Others
 - Correction: November Executive Board will be on November 16
- IV. **Treasurer's Report:** Rob Hevey, Church Treasurer, reported that May revenues were \$2,300 under budget and are \$23,793 under budget year-to-date. Total expenses for the month were \$600 over budget but are \$28,339 under budget year-to-date. The net result for the month is a surplus of \$4,546. The General Fund surplus is at \$ 40,940.
- V. **Committee Reports:**
- A. **PMRC and Leadership Committee Appointments:** As set forth in the GCC Constitution and Bylaws, each Executive Board At-Large member shall serve on the Planning Committee and only one standing committee (PMRC or Leadership). Lloyd Bettis announced the following committee appointments:

PMRC	Leadership Committee
Kara Clark	Christine Foley
Bob Kappus	Scott Lothian
MJ Detwiler	Laura Heyser
Kerry Karth	Bob McGee

Proposed By Law Revision: It was proposed that PMRC membership and terms be expanded in order to provide additional oversight and development of personnel and ministerial relations. At-Large members would serve for a three year term, two years as At-Large appointees, plus one additional year following a two year At-Large Commitment on the Executive Board. The benefit of this change is added continuity with expanded term and increased perspectives based on expanded membership...with all voting. This change requires a change to the By-Laws as outlined below:

Amend Article II, Section A., Point 2. To read as follows (*changes italicized*):

2. Personnel and Ministerial Relations Committee composed of the Immediate Past Moderator, as Chair, plus four At-Large members of the Executive Board, and one member of the Finance Board appointed by the Chair of the Finance Board. *All At-Large members will serve a 3-year term with the first two years served during their At-Large appointments to the Executive Board and a third year served after completion of their two-year term on the Executive Board. If an At-Large member is unable to serve the third year, then the Moderator, with Executive Board Approval, shall appoint another member of the Executive Board to fulfill the final year.* If the office of Immediate Past Moderator is vacant, the Moderator shall nominate and the Executive Board shall elect one of the At-Large members as Chair. The Vice Moderator shall serve as an ex-officio, non-voting member. The Moderator may be invited at the pleasure of the chair.

As outlined in the GCC Constitution, Executive Board members were sent a copy of the proposed By-law change at least two weeks prior to the June Executive Board meeting. Following discussion of the proposed change, a motion was made and seconded to accept the change. The motion passed unanimously by all those present and voting.

B. Leadership Committee – Bill Dailey

- **Leadership Meeting:** the Leadership Meeting will be Saturday, August 28, 2010 at Covenant Village, Northbrook, IL.
- **New Board Members:** Bill presented the following nominees for Services and Sacraments Board: David Aki and Bob Richter and for Church Properties Board: John Fell, Steve Rivard, and Jeff Zapfe. A motion was made and seconded to approve the nominees. The motion passed unanimously by all those present and voting.
- **Leadership Committee:** the first meeting of the Leadership Committee will be October 10, 2010.

C. Technology and Communications Committee – Bill Daily with assistance from the Leadership Committee will seek to fill open seats on these two committees.

VI. Board Reports

- A. Finance Board:** John Demler, Chair, presented for review and discussion proposed revisions to the GCC Investment Policy prior to a vote at the August Executive Board meeting. (A copy of the Revised Policy, with changes italicized, is attached.)
- B. Properties Board:** Glenn Davis, Chair, requested Executive Board approval of the Properties Board request for funds from the Capital Reserve Fund in the amount of \$16,300 for repair of the Garth roofing. A motion was made, seconded and passed unanimously by all those present and voting to grant the request for funds.
- C. Membership Board:** Doug Morgan, Vice-chair, reminded Board Chairs of the Membership Board request for Boards to complete the “*Volunteer Opportunities*” request forms given Board chairs earlier. The intent of the request is to compile a comprehensive list of volunteer opportunities in which GCC members can participate and become engaged. The list will be sent to all GCC members with Rally Day information. In addition, Board Chairs were reminded of their responsibility of manning the West Entrance Visitor Table on the same day the Board is serving coffee.
- D. Stewardship Board:** Margaret Lutz, Chair, reported on the success of the Rummage sale held June 18 and 19. A profit of approximately \$8,000 was realized.

Sally Thuresson updated the Board on the American Girl Fashion Show and requested permission to solicit the congregation for raffle prizes, funds for underwriting some expenses and funds to cover expenses related to inviting underserved mothers and daughters who will most benefit from the fund raiser. A goal of \$4,000 has been set. A motion was made, seconded and passed, with five abstentions, by all those present and voting to grant the request for funds solicitation.

VII. Selected Pending Matters

- A. Romeiser Scholarship** feedback: Pam Keckler praised Elizabeth Ciccolini, a Romeiser Scholarship recipient, for her work at GCC and her pursuit of a Master of Divinity at Chicago Theological Seminary. Elizabeth provided the Executive Board with a written summary of her experience.
- B. Long Range Plan:** Scott Lothian reviewed the progress to date in updating the LRP goals and objectives, which will be developed further at the August Leadership Meeting.
- C. The Organic Pantry Project (TOPP):** Laura Heyser reviewed the successes of the garden to date and requested permission to include in current publicity a statement explaining how those who wish to support the project financially can do so by making checks payable to Glenview Community Church with Community Garden in the memo section. A motion was made, seconded and passed by all those present and voting to grant the request for solicitation of funds through October of this year.
- D. ONA Task Force:** Following a thank you to the Task Force members for their work, the Task Force was dismissed.

VIII. Congregational Comments:

- Susan Mann asked to what extent GCC received funding from the recycling bin located in the parking lot. It was estimated that several hundred dollars per quarter are realized.

- IX. Adjournment** - The meeting was adjourned at 9:10 pm with the unison saying of the Lord's Prayer.

Respectfully submitted,
Beryl Bills - Church Clerk

Glenview Community Church

AMENDED AND RESTATED INVESTMENT POLICY

(Effective ~~December 10, 2007~~ **May 10, 2010**)

Purpose

This *amended and restated* investment policy (the “Investment Policy”) shall guide the overall investments of the Housing Trust, Romeiser Trust Account, *Endowment I, Endowment II and the capital and reserve accounts* and other endowments funds and investments (*collectively the “Invested Funds”*) of The Glenview Community Church (“GCC”). *In implementing this policy, the Finance Board shall not make any investments or distributions that are inconsistent with a specific Trust document.*

Investment Custodian and Manager:

The Housing Trust, Romeiser Trust Account, *Endowment I and II and the capital and reserve accounts* and other endowment funds and investments shall be held by a Bank trust department, a securities broker, or a mutual fund (the “Custodian”) approved by the ~~Board of~~ Finance *Board*, in accounts that are separate and distinct from any other accounts of GCC. *Except for Endowment II, all ~~the~~ such investments must be managed by a professional investment manager (“the Manager”) which may also be the Custodian. Endowment II shall be held and managed pursuant to its Trust Agreement.*

Investment Goals/Objectives

Investments are to achieve, in order of importance:

1. Security of principal;
2. Income yield;
3. Measure of inflation protection;
4. Build the endowment;
5. Generate annual cash requirement determined by the Finance Board.

Types of Securities

- A. Except for Endowment II, investments shall include:
 1. Direct Obligations of the Government of the United States;
 2. Obligations of agencies of the Government of the United States;
 3. Certificates of Deposit in domestic banks, with such assets being limited to the amounts covered by insurance and/or guarantees of the U.S. Government or agencies thereof;
 4. *Corporate or Municipal bonds rated “BBB+ or Baa1’ or better with a duration of 3 years or less” recommended by GCC’s Manager.*
 5. Professionally managed mutual funds rated as four- or five-star by Morningstar or similar rating service *or as recommended by the Manager.*
- B. Endowment II shall be held and managed (including any asset allocation) pursuant to its Trust Agreement.

Asset Allocation

The Finance ~~Committee~~*Board* shall periodically review the asset allocation guidelines in this Investment Policy Statement in an effort to achieve investment objectives while diversifying among asset classes to limit risk. Asset classes are considered based upon their historical returns, the volatility of the returns over various time periods and the investment-planning horizon. The primary attributes of suitable asset category alternatives are:

- Fundamentally sound reasons for expected returns to approximate past returns over the planning horizon;
- Correlation characteristics among asset categories that reduce variability of rates and returns in the total portfolio;
- adequate liquidity;
- adequate value determination;
- and systematic investment management processes for alternatives within each category.

The Finance ~~Committee~~ *Board* will consider the probability of attaining future returns from an optimal mixture of asset classes constructed with regard to acceptable limits or risk within the guidelines, or ranges set forth below.

<u>Asset Class For All Invested Funds Total Fund</u>	<u>Range % to Total Fund</u>	<u>Target % to</u>
Equity securities	40 – 70% (30 – 60%)	70%
Domestic fixed-income securities	55 – 55% (70% - 40%)	30%
<i>Alternatives</i>	<i>Up to 5% of Total Portfolio</i>	

Within the equity securities class, it is desirable to diversify investments based upon the characteristics of different management disciplines or styles. As a result, the equity class will be constructed as follows:

Equity Securities Diversification For All Invested Funds but Endowment II Allocation within Cap Size

Domestic large capitalization companies	40 – 50%	Growth 50% Domestic
Domestic small & medium sized capitalized companies	40 - 50%	Value 30% Domestic
International companies	10 - 20%	International 10% Growth 10% Value

The mix of growth and value should be balanced as recommended by GCC’s Manager and reviewed by the Finance Board.

Portfolio Benchmark

Funds	Should be Morningstar 4 or 5 rating <i>or a fund the Manager recommends</i>
Certificate of Deposits	Keep to under \$100,000 <i>or the currently Bank so fully insured amount</i> by FDIC
Review Performance of Funds	Russell 3000 Value or another similar index All World International Index or another similar Index
<i>Rating Agencies</i>	<i>Moody’s or Standard & Poor’s “Baa1” or “BBB+”</i>

Re-Balancing of Allocation

The asset allocation guidelines specified above allow for deviation of plus or minus 15% around target levels for the combined equity allocation and plus or minus 15% around target levels for the combined fixed-income allocation. The ~~Investment~~ Manager shall monitor the actual allocation of assets at the end of each fiscal quarter. Any deviations in excess of 15% require re-balancing to within the guidelines ranges for each asset class. This re-balancing may be achieved either through the infusion of funds or the transfer of funds among investments.

Additionally, the funds will be reviewed annually, or more frequently if deemed appropriate, for continued high Morningstar rating *or GCC’s Manager’s thoughts and recommendations*. Should a fund no longer be rated four or five star by Morningstar *or GCC’s Manager recommend selling it*, the retention of that investment must be reviewed at each meeting of the Investment Advisory Committee *or the Finance Board* until the investment is sold or the rating returns to four or five *or GCC’s Manager recommends continuing to hold such investment fund*.

If it is decided to sell any investment due to performance, and it is determined based on the recommendation of ~~Manager~~ *GCC’s Manager*, that such sale should occur prior to the next Finance Board

meeting, the Investment Committee may approve, and authorize the *Manager investment advisor* to execute, such sale. The proceeds from such a sale may be reinvested in a fund that meets the Investment Policy's "Type of Security" criteria provided it results in the portfolio remaining within the appropriate "Asset Allocation" guidelines herein.

August 27, 2010

GCC Annual Volunteer Opportunities Sign-Up Sheet

Please complete and return:
Glenview Community Church
Attn: Membership Board
1000 Elm Street
Glenview IL 60025

GCC Annual Volunteer Opportunities Sign-Up Sheet

Please complete and return:
 Glenview Community Church
 Attn: Membership Board
 1000 Elm Street
 Glenview IL 60025

Adult Education
Volunteer(s) Initials

Opportunity

_____ Presentation of area of interest or expertise

Community Garden

Children's Ministries

_____ Assist in nursery on Sunday's 10:20-11:40

Sunday School Teacher

Full

Part

Sometimes

Christmas Pageant

Help with Set Up

Help with Take Down

Help at rehearsals

Help Day of Pageant

Supervise open Youth Room or Gym

Supervise Hallways during pageant

Props

Costuming

Make-Up

Church Properties

Church Office

Reception

Confirmation & Youth

Drive to Night Ministry (north side Chicago)
to drop off donations

Parents of confirmands – Help with
activities as needed (drive, supplies, etc.)

Fellowship
Volunteer(s) Initials

Opportunity

Finance

Hands of Peace

Membership

Greet visitors & Congregants before
and after a church service

Welcome new members at a New
Member Orientation

Deliver bread to GCC visitors

Men's Ministry

Missions Outreach

Music

Pastoral Care

GCC Annual Volunteer Opportunities Sign-Up Sheet

Please complete and return:
Glenview Community Church
Attn: Membership Board
1000 Elm Street
Glenview IL 60025

PYF/678 Club

Volunteer(s) Initials

Opportunity

_____ Sponsor -Attend PYF two times per month
To engage with students in positive
relationships
_____ Parents – Help with activities as needed

Rally Day

Resource Development Committee

_____ Help with annual rummage sale

Services & Sacraments

_____ Read at Early Service
_____ Read at Late Service
_____ Help at Memorial Service
_____ Serve Communion
_____ Usher: Early Service once per month
_____ Usher: Late Service once per month
_____ Usher: Substitute
_____ Usher: Memorial/Funeral Services

Stewardship

Women's Association

_____ Join a chapter

Senior Minister's Report

Executive Board

August 28, 2010

The gifts of flowers, personal conversations, phone calls, cards, email messages, and donations made in memory of my dad continue to be uplifting and heart-warming to Peggy and me as we adjust to his death. The support and care expressed by so many in the congregation have strengthened and encouraged us. Thank you for expressing your care for us so lovingly. Someone has said that being a minister is like being the mayor of a small village. One of the jobs my dad had was serving one term as Mayor of Monticello, Kentucky. One of the things we shared in common was experiencing similar expectations from people and relating with people in similar ways. One of the regrets I have is that my parents, due to health issues, never got to visit Glenview Community Church and meet many of you. I think you would have delighted in each other. Peggy and I greatly appreciate the love and support you have offered us during this time of loss in our lives.

Just as I was involved in the care of my dad, many members of our congregation are involved at some level in caring for an aging family member. A book by Gail Sheehy, Passages in Caregiving, is valuable to those in the Sandwich Generation. I found the "Strategies Sessions" sprinkled throughout the book to be especially helpful.

Like many in the congregation, since our June meeting I have had some vacation time. However, more than half of my vacation was spent getting my dad enrolled in hospice care and then planning and participating in his funeral.

I joined several of the men in congregation at the home of Al TeRonde for the Men's Ministry Cookout. It was an enjoyable evening of conversation, sharing a meal, and planning future ministry opportunities. Also over the course of recent weeks I conducted baptisms for two of our grandchildren, had twenty-three appointments, and participated in an annual clergy retreat that has been part of my schedule each August for the last twelve years.

As we move toward September, weekly publication of the Broadcaster has resumed and 8:30 – 4:30 office hours have resumed. An agreement like the one we had last year soon will be finalized with BJBE to use three rooms for their Hebrew School this year on Tuesday evenings beginning in October and continuing through April.

Plans for Rally Day, September 12 are nearly complete. On Rally Day we resume a complete schedule of activities including choirs, Sunday school, Confirmation, monthly board meetings, and more consistent participation in worship. We have had several first time visitors during the summer and have a growing list of people who are interested in membership at GCC. A New Member Orientation Class is planned for October.

I trust that the way we have used our time and the events in which we have participated during the summer have refreshed and renewed us. As we move into September, may our enthusiasm and involvement in the ministry of GCC be the best it has ever been for us.

Howard W. Roberts

Executive Board Report July and August 2010 Rev. Dr. Pam Keckler

Activities

- Assisted with worship three times and preached two times
- Attended PYF Mission Trip BBQ & talked with leaders
- Visited the Moorings Open House in Arlington Heights
- Was part of a taping in the sanctuary for end of life documentary
- Led worship with Hands of Peace and attended their Farewell Dinner
- Performed 1 wedding, 2 interments and 2 funeral services
- Planning Women's Fall Retreat in detail with Marilyn Belleau
- Attended two meetings of Sunday School curriculum planning
- Spent counseling time with a college student who began using drugs
- Spoke at the Career Transition Group at OLPH
- Listened to a college grad talk about possible options for future
- Worship planning
- Found two new 7th grade teachers for confirmation class
- Completed all revised curriculum for confirmation teachers
- Met with CRS representative to discuss future justice issues and participation
- Enjoyed some vacation time with family at the beach
- Attended the baptism of Bryce Keckler, who just turned 1 year old.
- Read several novels this summer including *Sarah's Key*

Reflections

It was a privilege to lead worship when Hands of Peace participants were present. The theme for the day was "How Do You Pray?" If we are all "praying to the same God" does it matter how and why we pray? What about the importance of prayer? The way we pray? What if we just don't believe in praying? I was able to have dialogue with the youth after worship which was enlightening.

Here are some words by Terry MacArthur (*Seasons of the Spirit*) for us to reflect on these days:

"Prayer is a danger zone. Blessings can fall like bombs, putting into question who we are and to what God calls us. Prayer is particularly risky in an ecumenical context. In our own traditions we often learn how to tame our experience of God. We have found ways to make God safe, keeping God's presence from revealing our fractured lives or transforming a stony faith. But prayers from another tradition come as a gift, without demand. God uses the words of another to open us up to the Spirit which transfigures us, remaking us as wonderfully human because God entered in. The showers of blessing can swamp the boat, but rather than drowning in fear, we discover the gracious waters which buoy us up. Prayer is more treacherous than we had supposed—and at the same time more life-supporting.

While most religions would insist on the importance of prayer, the way of praying varies considerably: kneeling, eyes closed, listening to a bell, lighting a candle, repeating phrases over and over, kissing an icon, remaining silent. For many Christian traditions, the idea of a prayer written down means it is no longer a prayer. For them true prayer can come only from the heart. But our hearts are not the same, nor is the relationship we have with God in prayer. The written word cannot bring the gestures, the atmosphere of a worshipping community, the sound of the praying voices or the silences which make wordless space. Still, these prayers offer the vocabularies used by others when they pray. They give our hearts the possibility of discovering the hearts of others as they speak with God. We can overhear others when they pray. Maybe their prayer confirms our own. Maybe their prayer reshapes our prayer, changing our heart. Maybe God speaks to us when we speak to God using the words of another. That's where the danger comes. Because in the end, it matters less what we say to God than what we experience God saying to us." (*In God's Hands: Common Prayer for the World. Geneva*)

May you experience God in prayer, in your own way.

Pam

Glenview Community Church Adult Education Board Minutes

MEETING DATE/TIME/PLACE: Tuesday, August 10, 2010/ 7:00 pm/ Founders' Room

MEMBERS PRESENT: Marcy Blackwelder, Mark Brown, Nick Bubnovich, Vicki Buzard, Chris Calandra, Sheryl Long, Sally Schreiner, Earle Shultz,

Members excused: Sally Sargent

SUMMARY OF MEETING

Welcome and Introductions: Chris Calandra

Discussion Items:

Old Business

We need a vice chair as well as several more board members. Our board should have 10 members plus a chair and we currently have eight members including the chair. There has been discussion about reducing the number of board members but that idea has not been acted upon.

New Business

1. There will be only one church service at 9:30 starting on September 12. Adult Education will meet in the Chapel at 10:45. There will be a one year trial period, and then the one service schedule will be evaluated.

2. Child care from 9-12 on Sunday mornings was discussed. Our board feels that:

a. Child care should be offered for children birth-12 years following the 9:30 church/Sunday School hour

b. The child care rooms should be staffed by one set of people for 9-10:30 and another from 10:30-12 to prevent sitter burn-out. Sitters should be adults with the older children as helpers. Payment would be \$10/hr.

c. Child care should be a line item in the budget and paid for by the entire church. It should not be a part of any board's budget, but should be a shared expense like salaries or utilities.

3. Currently scheduled/planned programming:

September:

5 Labor Day weekend—No Adult Ed

12 Rally Day—No Adult Ed

19 “Supporting Women—a Heifer Cornerstone” Tom Amos

26 Mark Brown—A Faith Journey

October:

3 Rob Long—Healthcare Updates (tentative per his schedule)

10 *Lost Boys of the Sudan* presentation at 3 pm in the sanctuary

17 “The How, Why, and Spirituality of Quilting”

24 Ron Miller (topic to be announced)

31 Ron Miller

November:

- 7 Ron Miller
- 14 Ron Miller
- 21
- 28 Thanksgiving Weekend—No Adult Ed

4. Publicity

There was discussion about publicizing our events. Suggestions include:

- a. Ongoing blurbs in the Broadcaster and Bulletins
- b. Posters/flyers around church and the town
- c. Creation of a brochure with a catchy theme or title (based on a version from the First Congregational Church of Willow Springs) that outlines our seasonal offerings—a fall, winter, and spring trifold brochure. Nick Bubnovich suggested the thematic statement: “*Exercise Your Mind, Deepen Your Understanding of the World Around You, Energize Your Faith!*” Board members will create informational blurbs about our weekly offerings, Chris Calandra will coordinate, Marcy Blackwelder will create the first brochure for distribution in pews, etc. on Rally Day.
- d. Sheryl Long has agreed to do the publicity for the Lost Boys presentation in October. There will be print ads, email blasts, personal email invitations, and posters around town. We will be inviting the community at large, especially the high school and junior high students. Brian Wegley, Jim Shellard, and teachers at GBN will be contacted.

5. Speakers suggested for regular Sunday morning Adult Education programming include:

Jim Shellard talking about his mountain climbing

Bill Helmuth’s travels in Syria

A political person or candidates to discuss election issues/topics in fall

Kerygma or other formal Bible study curriculum—Sue Newberry or? Day, evening, Sunday morning?

Monthly personal faith journey presentations by church members—individually or in panel discussion form

We adjourned at 8:30 with the Lord’s Prayer.

MINUTES SUBMITTED ON: Wednesday, August 11, 2010 by Chris Calandra

NEXT BOARD MEETING SCHEDULED: Tuesday, September 14, 2010 at 7 pm in the Founders’ Room.

**GLENVIEW COMMUNITY CHURCH BOARD MINUTES
CHILDREN'S BOARD**

MEETING DATE: **June 1, 2010**
Potluck dinner began at 6:00 p.m. Meeting called to order at 7:30 p.m.

MEMBERS PRESENT: Jim Yagelski, Laura Heyser, Shane Bill, Sara Taylor, Corey Barnes,
Terry Adams, Betsy Garvey, Emily Davis, Julie Zylke

MEMBERS EXCUSED: Kathy Lifton, Clark Bundy, Tracey Noe, Pam Mers-Reidy, Stephanie Ford,
Christopher McGuire, Michelle Langenbach, Shawn Eshoo,

MEMBERS ABSENT:

Opening Prayer/Reflection

Jim

Chair Report

Laura

Shared Space: we're still looking for a book case to house a children's library in the narthex. We can have one custom made in a style fitting the décor for \$600 but will keep looking for other alternatives. One idea is to find two small, end table sized units and put a potted plant in between.

Community Garden: Lots of great responses to the garden! The congregation and community seem very excited about this. June 6 (this Sunday) TOPP will lead an assembly with the children during the Sunday school hour which will include information about plants and organic gardening and a presentation with worms and discussion about the circle of life. The children will then help name the garden and will create identification cards for the garden if time allows. Board members were asked to be present if possible and also encouraged to volunteer in the garden throughout the summer. Following the service, the children will lead the congregation in filling the garden beds with soil and planting the garden. Howard will join us in the garden around 11:30 to say a prayer for the garden. Laura will look into swapping coffee hour duties with Missions Board so we can serve coffee, lemonade, and fresh fruit by the garden.

Vice Chair Report

Jim

The Children's board was one of the first to be filled this year. Jim is very excited about the new group! As chair, Jim will meet with Kathy and Pam (vice chair) over the summer to beginning planning for the upcoming year and is looking for ideas for mission projects and other activities. First meeting in the fall will probably be in September. Classroom connections assignments will be determined at that time.

New Business

Group

Coffee hour July 25 unless we swap for this Sunday.

Meeting adjourned with the Lord's Prayer at 8:00.

Next meeting: to be scheduled; tentatively September 7

Respectfully submitted by Laura Heyser

FELLOWSHIP BOARD MINUTES

Meeting at 10:30 on August 22, in Room 213 at the Church.

Members Present: Dianne Christiansen, Karen Christiansen, Leanne Drennan, Ann Grant, Melinda Krueger, Steve Krueger, Brad Smith, C.J. Sultz

Welcomed new members to the Board.

Coffee Hour responsibilities. Ann Grant volunteered to notify Boards of dates they are assigned to serve coffee and provide them with written instructions of what needs to be done. The Board agreed that we will continue to provide donut holes to be served at coffee hour. Any Board wanting to substitute other treats for the donut holes on the Sundays they are responsible for serving coffee are free to do so, we just ask that they notify the Fellowship Board. Each Board member present took responsibility for providing the donut holes during one month of the coming year.

Rally Day. We discussed our traditional involvement with Rally Day. Everyone agreed that if Chapter 11 can use our help again this year we are happy to be involved.

St. Patrick's Day potluck. The Sheila Tulley dancers have been reserved for March 6. We will plan details as we get closer to the date.

Review of Fellowship Board responsibilities. Per the Constitution the Fellowship Board "shall promote the general spirit of fellowship in the Congregation through the organization and supervision of group activities." The board felt that we should work to help new members get acquainted and involved in church activities. We discussed hosting two new member events during the year possibly linked with other church events.

**GLENVIEW COMMUNITY CHURCH BOARD MINUTES
SERVICES & SACRAMENTS**

MEETING DATE/TIME/PLACE: Monday, June 14, 2010 at 6:30 p.m., The Brown Residence

MEMBERS PRESENT: Cathy Ach, Dave Aki, Pam Asplund, Carolyn Brown, Mike Davis, Dori Hirsch, Bob Richter, John Roth, Julie Tillman, Kathy Tomita

MEMBERS EXCUSED: Susan Edgar, Janice Lane, Jeff Lundal, Colleen MacKimm, Carlton Olson, Mary Anne Peruchini, Carol Young

MEMBERS ABSENT:

AD HOC MEMBERS PRESENT: Steve Lindell

Opening Prayer

Minutes for the May 10th meeting were reviewed and approved

- **Report from the Senior Minister, Howard Roberts**
 - Howard Roberts thanked the board for their support during the past year.
- **Lector Report**
 - Colleen MacKimm will continue to schedule in the coming year.
- **Usher Report –**
 - David Aki reported working on a sub list of ushers and confirming that early team lists are up to date.
- **Summer Communion**
 - For the 4th of July service, 4 servers will be needed for communion by intinction. Dori Hirsch, Steve Lindell, Bob Richter and Julie Tillman have agreed to serve.
 - Five servers are needed for August and September. Colleen MacKimm has agreed to schedule the servers for these services.
 - Gluten-free bread should be in a separate basket. Bread should be prepared for 200 people (3 baskets plus 1 for the gluten-free bread) and 3 chalices of juice.
 - Julie Tillman will prep the bread and juice for the 7/4 service. Mike Davis has agreed to prep the bread/juice for the 8/1 service (with Kathy Ach's help if needed). Carlton Olson has agreed to prep the bread and juice for the 9/5 service.
- **Old Business**
 - Carolyn Brown thanked Mike Davis, Dori Hirsch, Jeff Lundal, Kathy Tomita and Carol Young for their great work on the board.

**GLENVIEW COMMUNITY CHURCH BOARD MINUTES
SERVICES & SACRAMENTS**

- Two new board members still needed

- **New Business**
 - The next coffee hour will be August 8th after the 9:30 service. Cathy Ach and Pam Asplund have offered to serve.
 - Mike Davis stated that he would like to continue being considered to serve communion starting in the fall.

Meeting was adjourned by 7:00 pm for dinner.

Next Services & Sacraments Board Meeting:

Date: **Monday, September 14, 2010**; 7:00 p.m. Location to be determined.

Respectfully submitted,
Julie Tillman

STEWARDSHIP BOARD MINUTES

MEETING TIME/DATE/PLACE 7:00 pm, August 10, 2010 at the home of Margaret Lutz
MEMBERS PRESENT: Scott Brady, Scott Frerichs, Margaret Lutz, Jackie Seter, Sally Thuresson
MEMBERS EXCUSED: Cindy Dailey, Gretchen Grad, John Tillman, Steve Brown, Larry Chandler, Karen Patterson O'Brien, Chris Rivard

- I. Devotion: Scott Brady. Opening prayer schedule distributed
- II. Minutes from July 13, 2010 presented. Motion for approval – Scott Brady, Seconded – Jackie Seter. Minutes approved.
- III. Stewardship Board members
 - a. John Tillman, Vice Chair, will spearhead filling the one remaining position of our Board.
- IV. Stewardship Board Photo:
 - a. Will be taken at the September 14th board meeting including both Howard Roberts & Pam Keckler.
- V. Rally Day
 - a. September 12th.
 - b. Membership and Fellowship Boards are sending out Rally Day literature and Membership Volunteer Opportunity Forms. These boards don't meet until August 28, so we don't know if there will be tables for groups for sign-ups. Our tables would be: Sally Thuresson table for American Girl event, October 16 & 17, RDC table Pancake Breakfast on October 24 to sell tickets. Tables should be outside – people won't come downstairs per Sally Thuresson's experience.
- VI. Coffee Hour
 - a. Stewardship hosting September 19th, Signup sheet attached for Stewardship Board members only.
- VII. Xmas Lights
 - a. Currently missing – hold off on contacting Boy Scouts
- VIII. Confidentiality Pledge: All have signed except Chris Rivard still needs to sign.
- IX. Resource Development Committee
 - a. American Girl – October 16 & 17: Mailing went out July 30 Sponsors so far: Loeber Motors and Kids Snips. Receiving quotes on printing. Display Case created by Karen Ornduff.
- X. Report from Scott Frerichs & Karen Patterson O'Brien on Planned Giving Committee.
 - a. Karen Patterson to call Jason Ornduff from planned giving committee. Still waiting to hear from Per Hanson.
- XI. Report from Scott Brady regarding initiating discussions of "Long-Range Financial Plan /strategy" of church.
 - a. Scott Brady & Margaret Lutz meeting with Glen Davis, Properties Board on 08/12/2010.
 - i. Comprehensive list of capital improvements needed. (Takes a long time to identify what needs work.)
 - ii. Estimated costs to be determined and presented to the Executive Board.
 - iii. Establish a priority list.
 - iv. Last process for Creating Sacred Space took 5 years from starting process to completion of work.
- XII. Flowers for Howard Roberts father's funeral were appreciated by Howard and Peggy and a thank you letter received.
- XIII. Leadership Retreat followed by the Executive Board Meeting on August 28.
- XIV. 2010-2011 PLEDGE CAMPAIGN.
 - a. Stewardship letter: Include: Wording of letter – only receipts from pledges goes to missions – frustrating from point of Finance Board. Some people that don't pledge are very mission driven.
 - b. Write articles to put in the Broadcaster – information articles.
 - c. Banners – have been updated and A-Monk Signs printing changes for \$30.
 - d. Envelopes and Stationery to be orderd by Jane Payne. Two mailings – probably order 1,500 envelopes.
 - e. Display case: Cindy Dailey & Larry Chandler in charge. Case is dedicated to SB September 13 – October 16.
 - i. Last year had a lot of activity & history pictures. New posters: Get new photos to create poster (pancake breakfast, rummage sale, Hands of Peace, children's activities, Victory Garden, organ program, poinsettias in Sanctuary – via Jackie Seter). Tanya has pictures. Can order posters online. Use same dark blue background.
 - f. Time and Talent Insert to be eliminate from SB Campaign mailing.
 - i. New Time & Talent form very nice and well done by Membership Board– replaces old small form.
 - ii. Missing the Worshipping at GCC, and Spiritual Growth opportunities which is to be included in Stewardship Board material.
 - g. Commitment of financial support
 - i. Goal of 2010 \$1,080,000, as outlined in Howard's presentation to Executive Board & Stewardship Board, is welcomed by Lloyd Bettis, Moderator and John Demler, Finance Board. Further discussion and adoption to be by full Executive Board. Stewardship Campaign to assist in reaching this goal.
 - ii. Executive Board has adopted "Embrace the Vision" language which Stewardship Board supports.
 - iii. Last Year's total was \$977,000

- iv. Combine pledge line with Annually, Quarterly, Monthly, Weekly section.
- v. E-Blast – is it being used too much? Decision:
 - 1. Use the E-Blast. Delete the video at beginning.
 - 2. Dale Wittenberg reported 93 people pledged on-line last year.
 - 3. Need to emphasize in the letter that they can pledge on line. Also put it in the Broadcaster.
 - 4. On-line form needs to be updated – Larry Kemp can help with this.
 - 5. The E-Blast content should be short and sweet.
 - 6. Should go out Monday after Rally Day. Regular mailing goes out the 10th.
- vi. Mailing Printing
 - 1. We need to have the printing before 09/01/2010 so Scott Frerichs can get it stuffed at office.
- vii. Letter Content
 - 1. Same letter will go out to all members of the Congregation. In the past there were issues when different letters and different timing was used to reach our Congregation per Scott Brady.
 - 2. Discussion of language about money going to Missions – church policy on % to Missions
 - 3. Margaret to try to craft language – will work with John Tillman – send out letter to Board
 - 4. Discussion about adding specific dollar goal to letter (ill- advised per Durall book).
 - 5. Sally to take letter to Jim and check her on-line source to get quotes on printing.
 - 6. From *Creating Congregations of Generous People* book.
 - 7. If we reach our goal we will be able to donate \$100,000 to Missions
 - 8. Can we get some of this language into the Broadcaster?
 - 9. Emphasize getting people to change from donating to pledging to help both Mission Outreach income and the Finance Board to create the Budget on time.
- viii. Signage
 - 1. Narthex and Transept – New poster board with thermometer and our themes “Our Church, Our Faith, Our Commitment and Embrace the Vision, Live the Mission”
 - 2. Get a plastic sign that we can color in with a washable marker.

XV. My Faith – My Church

- a. Broadcaster Articles
 - i. Stewardship to identify people to write articles twice a month
 - ii. Topics – We will recommend the following topics for the articles:
 - 1. Focus on GCC faith journey.
 - 2. Experiences at GCC
 - 3. “What pledging means to me”
 - 4. “What Sunday worship means to me”

XVI. Stewardship Board Presentations

- a. Four Stewardship Board presentations just in first month of campaign
- b. Get up and give a short presentation: Margaret Lutz, John Tillman, and two more from the Stewardship Board.

XVII. Pledges to Date

- a. Pledged Income YTD: \$650,000 – Actual Income YTD \$611,000 – Typical of summer months to be short this amount.

XVIII. Other

- a. Margaret went to hear Sally Iberg’s first sermon at Pilgrim UCC in Oak Park. A warm and welcoming atmosphere. Sally seemed relaxed and preached a wonderful sermon on “Living Into the Promise”. Sally is the Senior and only minister.
- b. Finance Board – meet with them on 09/14 for 15 minutes to collaborate on how to communicate better. Also discuss how to better get the message out to the congregation.
 - i. They have not received information from many of the other Boards yet.
 - ii. Our Boards need to do a better job communicating.
 - iii. We should have a focus and a purpose for the meeting.
 - 1. What is their process?
 - 2. How do they make decisions and changes?
- c. The list of 45 Members who do not attend services, pledge or donate:
 - i. Bill Dailey to address this issue
- d. RDC – Has made \$8,500 on pancake breakfast and rummage sale.

Next meeting(s): Sept. ____, Date and Room at GCC to be determined to place labels on Stewardship Campaign mailing.
September 14, 7:00 pm at Room 7, GCC.

STEWARDSHIP BOARD MINUTES

MEETING TIME/DATE/PLACE 7:00 pm, July 13, 2010 at the home of Margaret Lutz
MEMBERS PRESENT: Scott Brady , Steve Brown, Larry Chandler, Scott Frerichs, Gretchen Grad, Margaret Lutz, Karen Patterson O'Brien, Jackie Seter, Sally Thuresson
MEMBERS EXCUSED: Cindy Dailey, John Tillman
MEMBERS ABSENT: Chris Rivard

- I. Devotion: Sally Thuresson
- II. Minutes from June 8, 2010 presented. Motion for approval – Larry Chandler, Seconded – Scott Frerichs. Vote taken. Minutes approved.
- III. Stewardship Board members
 - a. Review of current phone numbers and addresses. Appropriate changes were made.
 - b. Discussion of current board and suggestions for additional people. Board members are happy with current board and do not believe additional board members will be necessary. John Tillman, Vice Chair to confirm this decision.
- IV. Stewardship Room Request:
 - a. Room Request form was submitted to Tania with request for Room 7 at 7:00 pm starting in September. Summer meetings will be at home of Margaret Lutz unless otherwise notified.
 - b. One of the September dates is "open" right now based upon the mailing for the Stewardship Campaign.
 - c. Maybe have a special date in December for a holiday get together.
 - d. Copy of Meeting dates distributed.
 - e. Copies of 2010, 2011 calendars distributed
- V. Stewardship Board Chair Notes:
 - a. The response from the Stewardship Board to support the request from the Ministers and Moderators to continue having one Sunday Service at 9:30 am throughout the year was unanimous.
 - b. Coffee Hour on July 11: Scott Brady, Scott Frerichs, Sally Thuresson, Cindy Dailey and Margaret Lutz served coffee. The Membership Board requested that one visitor table be manned.
 - c. Discussion of staffing the Visitor Table after the church service. Board feels that the Membership Board should staff the table since we will now have only one service.
 - d. Xmas lights donated by the Kinzalow family not sold at the Rummage Sale will be sold at coffee hours by the RDC prior to the Christmas Holiday and staffed by RDC and Stewardship Board members. Timing of sale to coincide with Boy Scout Christmas tree sale. Scott Frerichs to determine the dates of the Boy Scout sale.
 - e. Each Stewardship Board member was asked to sign up for one meeting to present the Opening Prayer. Sign up did not get passed around.
 - f. As of June 8 Executive Board Meeting the Year-To-Date Pledge Actual Income numbers \$489,321 vs. budgeted \$513,115 (amounts corrected from report). Because Expenses were slightly behind budgeted expenses, the balance sheet shows a net plus balance. Margaret to provide more detailed information at next meeting.
- VI. Stewardship Board Photo: Date for photo is 09/14 in Sanctuary include Howard Roberts and/or Pam Keckler.
- VII. Confidentiality Pledge: Each Board Member present signed Pledge. Absent members to sign at next meeting.
- VIII. Report from Resource Development Committee (Steven Brown and John Tillman).
 - a. Rummage Sale was June 18, 19 & 20.
 1. Steve reported that the sale was a success. Over \$8,000.00 was made.
 2. We learned a lot and will have better idea of how it works next year. Putting document together about experience.
 3. Over 150 people volunteered. Has taken a while to clean up. Will do better next year.
 - b. American Girl Fashion Show weekend of Oct. 16 & 17 (Sally Thuresson chair).
 4. Just received mailing from American Girl
 5. Address labels will be printed in first week of August and mailed the third week in August
 6. Going to Exec board to get permission to send out mailing to selected members about making a donation
 7. Mailing letters to sponsors to sponsor tables to subsidize girls than cannot afford a ticket.
 8. Purchasing extra raffle prizes to have more at each of four shows.
 9. Looking for volunteers for folding/stuffing.
 10. Looking for people to approach companies for sponsorship
 11. Looking for MCs to run each of the shows.
 - c. Pancake Breakfast – October, 2010. Still working on selected date for this event.
 12. Need to promote breakfast, possibly at Rally Day

- IX. Report from Scott Frerichs & Karen Patterson O'Brien on Planned Giving Committee.
- a. Karen Patterson to call Jason Ornduff from planned giving committee.
 - b. Still waiting to hear from Per Hanson(?)
- X. Report from Scott Brady regarding initiating discussions of "Long-Range Financial Plan /strategy" of church. Discussion of ideas.
- XI. 2010-2011 PLEDGE CAMPAIGN.
- a. Copy of book "Creating Congregations of Generous People" by Michael Durall given to all members who did not yet have a copy.
 - b. My Faith, My Church, My Commitment 2009-2010 Campaign material distributed to all Committee Members for reference.
 - c. GCC Annual Volunteer Opportunities Sign-Up Sheet prepared by the Membership Board distributed for review and comment.
 1. Energetic discussion of the look and feel of this form. What information should be included? Should dates be included?
 2. Discussion of whether to include the Volunteer Opportunities in the Stewardship Campaign mailing.
 - i. In the past information was not passed on to appropriate boards
 - ii. People who volunteered not contacted
 3. Decision made to recommend to Membership Board that since this mailing is so important that it be mailed in a separate mailing.
 - d. A copy of the GCC *VISION, MISSION AND LONG RANGE GOALS AND OBJECTIVES* distributed for reference; Consideration for same LOGO, THEME (My Faith, My Church, My Commitment), COLOR SCHEME to be discussed.
 1. We need to come up with a good story, a compelling message, for this year's campaign.
 2. Do we want to change the look and feel of the printed material AND also change the theme of this year's campaign? Is the theme set? Will changing the theme every year dilute the "Brand" of the campaign?
 3. Do we want to keep the artwork?
 4. Howard Roberts materials distributed:
 - i. Embrace the Vision, Live the Mission
 - ii. 5/11/10 financial giving insight.
 5. Is the theme set? Is Dr. Roberts' Embrace the Vision, Live the Mission what we need to follow?
 6. Could we meld the two together on the sign? Use the My Faith, My Church artwork and then use the Embrace The Vision language in the content of the letters?
 7. **Stewardship Board needs to come up with an approach for the next meeting!**
 8. E-Blast – Do we want to use the same content as last year? Do people watch the video or do they click right through? Dale has records of how many people signed up last year. Last year's materials are still on web site. Margaret will get statistics from Dale.
 - e. Sign up for 2010-2011 Campaign Duties:

1. Email Blast Coordinators:	<u>Sally Thuresson</u>
2. Mailing Design Coordinators:	<u>Margaret Lutz & Tania McCarthy</u>
3. Printing/Mailing Coordinators:	<u>Scott Frerichs – Karen Patterson</u>
4. Display Showcase Design & Set up, Quote Display:	<u>Cindy Dailey & Larry Chandler</u>
5. Stewardship Campaign Follow-Up with Dale Wittenberg:	<u>John Tillman – Gretchen Grad</u>
6. Bulletin/Broadcaster Articles:	<u>Margaret Lutz</u>
7. Vice Chair/Leadership Committee:	<u>John Tillman</u>
8. Secretary	<u>Scott Frerichs</u>
9. Pledge Thermometer update:	<u>Jackie Seter</u>
10. Campaign Presentations to Congregation on Sundays:	<u>Margaret Lutz, Steve Brown, Gretchen Grad & Scott Brady</u>

XII. Home Visitations

- a. Do we want to visit people to discuss the campaign and pledging?
- b. Cindy Dailey participated in home visitations previously
- c. Board decided this would not be a useful way to spend time. Likely to not get a positive response.

XIII. Do we want to make a top 10 theme? Top 11?

XIV. Meeting was closed with the Lord's Prayer

Next meeting: August 10, 7:00 pm at the home of Margaret Lutz, 2130 Robincrest Lane, Glenview.

STEWARDSHIP BOARD MINUTES

MEETING TIME/DATE/PLACE: 7:00 pm, June 8, 2010 at the home of Tom & Margaret Lutz for a BBQ with the Missions Board and meeting following.

MEMBERS PRESENT: Margaret Lutz, Karen Patterson O'Brien, Scott Frerichs, Larry Chandler, Steve Brown, Cindy Dailey, John Tillman, Jackie Seter, Gretchen Grad, Scott Brady, Rev. Howard Roberts, Rev. Pam Keckler

MEMBERS EXCUSED: Sally Thuresson, Chris Rivard

GUEST: Bill Dailey, Vice Moderator

- I. Devotions: Howard Roberts
- II. Introduction of all Board Members.
- III. Request for volunteer as Secretary. Scott Frerichs agreed to be Secretary.
- IV. Planned Giving Committee to have Stewardship Board representation and coordination: Scott Frerichs and Karen Patterson O'Brien (both attorneys) to be representatives to work with them to inform people about leaving money to the church.
- V. Total Financial Overview and Approach and understanding. Where does money go, extra for Capital Reserve, etc? We need to develop a relationship with the Finance Board to get a larger picture of the church finances and understand the long range plans for the church. Scott Brady, former Finance Board Chair and architect of the Long Range Plan will spearhead this effort.
- VI. Glenn Davis, Properties Board notes \$1,500,000 to \$2,000,000 in capital improvements needed for the church. Stewardship needs to get an understanding and a comprehensive list of all of these needs and then develop a plan to present to the Executive Board. Since a Capital Campaign is the responsibility of Stewardship Board a full investigation should start ASAP. A list to be itemized, priced and a priority list to be established.
- VII. This year's theme: Embrace the Vision – Live the Mission. Rev. Howard Roberts gave a description of how this can pertain to the Stewardship Board.
- VIII. Discussion of desire for new projects that GCC could take on, similar in scope and awesomeness of the Hands of Peace Project.
- IX. Rev. Dr. Pamela Keckler discuss some of her activities on her sabbatical including reading the Book "A Million Miles in a Thousand Years" by Donald Miller. Copies were handed out to everyone and a discussion of this book with our Committee will take place after our Campaign is under way.
- X. July meeting Agenda – to discuss the campaign. Letters to be prepared in August for distribution after Rally Day in September.
- XI. Rummage Sale Discussion. We need as many people as possible for set up and the day of the event. Cindy Dailey will be pricing the furniture and the china. Resale Shop has been donating items and hangers. Volunteers for Day of Sale are being handled by Tracy Sawires.
- XII. American Girl Event will be in October at the Lincolnshire Marriott.
- XIII. John Tillman & Steve Brown gave a Resource Development Committee report.
- XIV. Next meeting: July 13, 7:00 pm. Location may be at Larry Chandler's home. Exact info to come.
- XV. We closed with the Lord's Prayer lead by Pam Keckler.

Glenview Community Church Women's Association
EXECUTIVE BOARD MEETING
May 18, 2010

President Tracy Sawires called the meeting to order at 7:02 p.m. Tracy began the meeting with a reading from *A Million Miles in a Thousand Years: What I Learned While Editing My Life*, by Donald Miller, a book that suggests that readers reconsider what they strive for in life. Roll was called with eleven in attendance.

President's Report – Please see page 5 and share with your chapter.

Vice President's Report – CJ updated the Executive Board on plans for the Ladies Tea, Sunday, May 23rd at 2:30 p.m. This is an event is for all ages, and non-GCC members are welcome.

Treasurer's Report – Please see page 6.

Special Presentation: Hands of Peace

Hands of Peace describes itself as “an interfaith organization developing peace-building and leadership skills in Israeli, Palestinian and American teens through the power of dialogue and personal relationships.” HOP Treasurer/WA member Jane Hund and her daughter, Diane, the Assistant Program Director, provided Board members with information about its plans for this summer's program. Jane described Hands of Peace as one of the great things GCC has fostered—like the Resale Shop and the Village Treasure House, a woman (Gretchen Grad) had an idea and the church helped her make it happen.

This summer's program is July 16th through August 2nd. Participants will include seven Israelis, seven Palestinians, four Arab citizens of Israel and 14-15 Americans. According to Diane, every non-American who participates has a story and knows someone who died as a result of the conflict. The goal of HOP is not to change their points of view, but to give everyone a broader perspective. Feelings are very intense initially, and it is the Americans' job to help people mix. This occurs slowly, but by the farewell banquet, friendships have been made.

Please contact Debby Fosdick at 847 832-1396 or debbyfosdick@ameritech.net to find out how your chapter can participate in the program next year.

New Business

2010-11 GCCWA Officers – Executive Board members present unanimously approved the following slate of officers for 2010-11:

President	Tracy Sawires
Vice President	Margaret Ludemann
Secretary	Kathryn Hall
Treasurer	Joan Streibel
Past President	Barbara Schwarting

Tracy suggested that it's not too early for chapters to begin thinking about who might want to become more involved in the Women's Association by becoming an officer in 2011-12.

2010-11 Budget – Ann Deakyne’s motion to approve the proposed 2010-11 budget presented by Treasurer Joan Streibel, seconded by Stephanie Whisler was passed unanimously. Please see page 7 for details.

Old Business

Garden Club – Pursuant to the vote at the March meeting, all Garden Club funds have been transferred to Chapter 1.

Committee Reports

Church Women United – No report. We agreed that we should continue to support this organization, but it would be good if we had a representative.

Social Services – We have distributed \$31,200 in grants this year, which were as follows:

Bethel AME Church \$5,000	\$ 200	Night Ministry
By the Hand Club for Kids \$3,250	\$3,500	Northside Housing & Supp. Services
GCC Ministers’ Discretionary Fund \$ 500	\$ 500	Northfield Township Food Pantry
GCC Mission Tree \$4,000	\$ 500	Onward Neighborhood House
Good News Community Kitchen \$3,500	\$2,000	San Lucas Iglesia
Helping Hands of Glenview \$ 500	\$ 500	Self Help Closet & Pantry
Journeys from PADS to Hope \$ 250	\$2,500	Special Gifts Theatre
LEAP \$3,500	\$1,000	Youth Services of Glenview/Northbrk

Meals on Wheels – The program ran very smoothly this year. Thank you to all who participated.

Membership – No report.

Friendship – Chapter chairs, please do not forget to e-mail Barbara Pollak with information about any of your members who could use a note of comfort and cheer.

Resale Shop – Operations were successful and the shop has pledged another \$50,000 to the Women’s Association for next year. Tracy commented on what a great job the committee/shop has done in spreading the word with flyers, postcards to other non-profits and reaching out to schools. Board members who worked in the shop praised the staff. A greater number of volunteers from the chapters would be appreciated next year. Whatever remains when the shop closes on June 17th will be given to the church rummage sale.

FEDS – Cindy Dailey and Blanche Hanson have been busy orchestrating several improvements to the church. Upholstery projects for the Narthex are being completed,

and GCC member Anne Ollman volunteered her time and expertise to sew the valences for that area. Eight new coffee carafes have been purchased and vinyl/flannel backed tablecloths are being priced. The down-stairs women's bathroom will be freshened with new sinks, wallpaper removal and new paint.

Prayer Shawl Ministry – The Prayer Shawl Ministry continues to thrive.

Village Treasure House – Business has been very good at the Village Treasure House, although new consignors, customers and volunteers are always needed. Spring grants of \$60,000 will be distributed in June.

Garden Committee – The Plant Sale was very successful, resulting in profits of approximately \$2,200 that will be used to beautify the church.

Bridge Marathon – The Bridge Marathon plans to change its method of operation for next year. Participants will meet the third Monday of the month at 1 p.m., pair up and play. There will be no pre-formed teams, as there are not enough participants.

Chapter Reports

Chapter 1 – Chapter 1 held its final meeting and dinner.

Chapter 3 – Members of Chapter 3 participated in a “spiritual book discussion” with Dr. Keckler in April. The chapter's fundraiser to benefit the Onward Neighborhood House will be held tomorrow at the Sawbridge Studios in Hubbard Woods. Ticket sales have been good. Members enjoyed a joint meeting with Chapter 9 last week, more fully described below. Their final meeting was a dinner at Barb Cabay's house in early June.

Chapter 4 – No report.

Chapter 7 – Next year's officers were chosen at Chapter 7's recent meeting, and members agreed to support and coordinate confirmands for Rally Day in the fall. Their last meeting was at Grampa's, where they said goodbye to Mollie Vanderkaar, who is moving away.

Chapter 8 – Chapter 8's presentation of Joyce Schrager was very successful—112 attended both the program and the luncheon, while another 20 came for the program only. Upcoming events include a trip to the Botanic Garden and their end of the year luncheon, which will be hosted by Diane Thompson.

Chapter 9 – Chapter 9 served at the Good News Kitchen in April, and members will be volunteering at the Northfield Food Pantry in June. In May, the chapter held a joint meeting with Chapter 3 at Carolyn Eigel's house which included a potluck dinner and a presentation by Carolyn's sister, Jeanne Hansen, on her trip to Machu Picchu. Jeanne is a UCC minister. Chapter 9 has agreed to replace all of the aprons in the GCC kitchen.

Chapter 11 – Chapter 11's Drive-thru Barbeque took place on May 14th. Proceeds will be used for next fall's Rally Day activities.

Chapter 16 – No report

Chapter 19 – Chapter 19 had a work day at the Northfield Food Pantry in April, followed by dinner. Jack Callahan from Journeys from PADS to Hope spoke to the chapter concerning the organization's lawn service and painting company, which provide legitimate services and teach participants skills at the same time. The chapter's last meeting was a brunch.

Chapter 20 – Chapter 20 held its final meeting at Dori Hirsch's.

Additionally....

Dr. Keckler stopped in to thank the Women's Association for all that we do. Our scholarship for the Women's Retreat has allowed more women to participate, and our PYF scholarship is equally beneficial. Elizabeth Ciccolini also feels supported by us in her activities. Dr. Keckler suggested that if we would like to discuss things that GCC needs that the Women's Association could help with (e.g., the Prayer Shawl Ministry), please ask her. She offered some suggestions, including a breast cancer support group, or support for those with aging parents. She also is available to meet with individual chapters, and suggested several topics (parenting, youth and the church, e.g.) and books (*The Case for God*, by Karen Armstrong) for discussion. Dr. Keckler is happy to help the Women's Association in any way that she can.

Sandy Frantz is collecting the make-up bags (not the make-up in them) that are frequently given away as free gifts by cosmetic companies. She and her daughter-in-law send them to an orphanage in San Salvador, where they are greatly appreciated by girls who have very few possessions of their own. This is an on-going project, so please contact Sandy if you have any you would like to donate.

Adjournment

The meeting was adjourned at 8:40 p.m. with the Lord's Prayer.

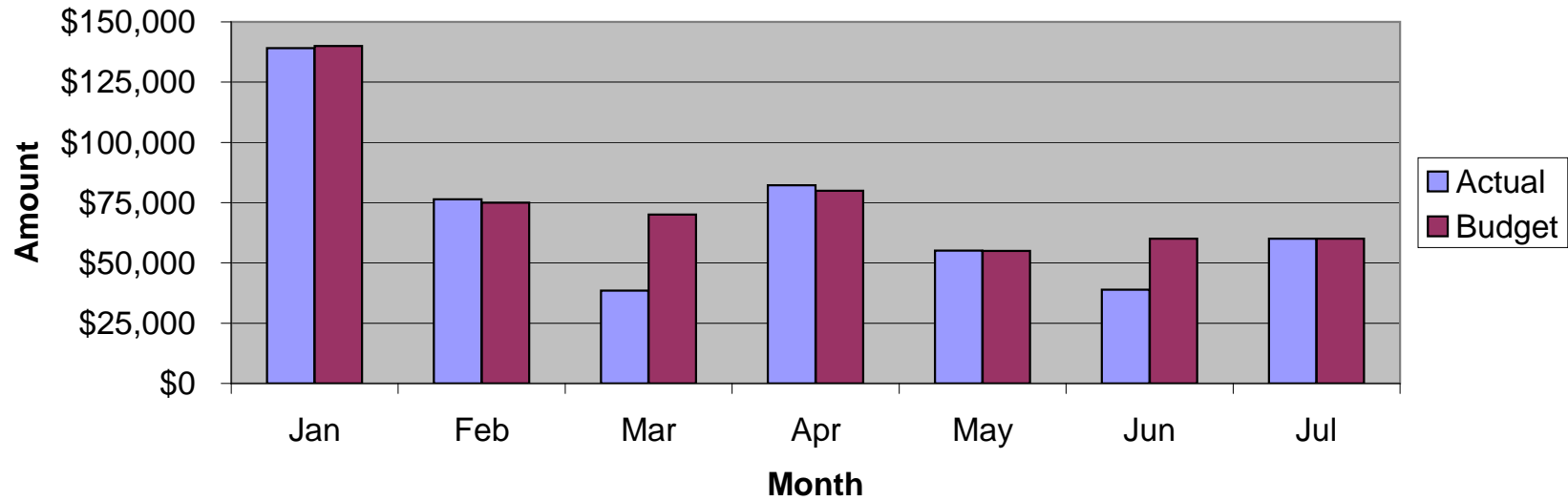
Respectfully submitted,

Kathryn Hall, Secretary

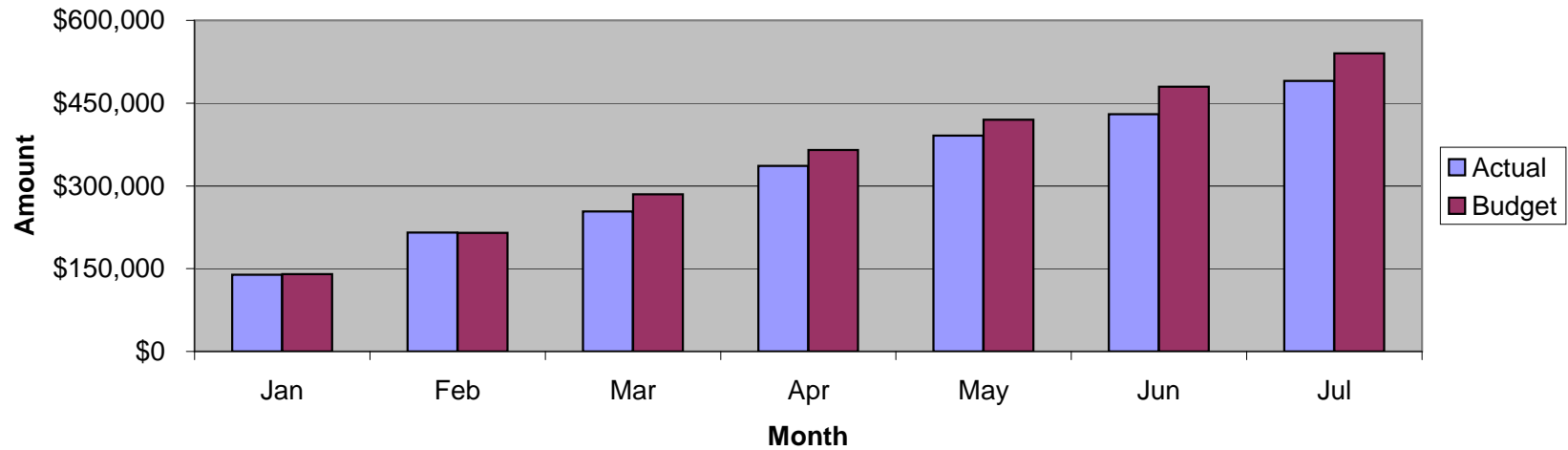
**Glenview Community Church
YTD Revenue Expense Summary**

	Jul-10	YTD	YTD	YTD	Notes
	Actual	Actual	Budget	Over/(Under)	General Note: Most revenue accounts and certain expenses have been seasonally adjusted.
				Budget	
Revenues					
Current Pledge Contrib	60,022	490,200	540,000	(49,800)	
Non-Pledge Contrib	1,345	35,873	25,500	10,373	
Pledge Overage	398	2,797	8,800	(6,003)	
Prior Year Pledges	-	9,950	10,000	(50)	
Loose Offerings	276	4,168	4,900	(732)	
Women's Assoc	-	10,000	7,500	2,500	
Fees & Nursery School	1,174	30,147	25,100	5,047	
Interest	9	35	245	(210)	
Housing Trust	655	2,979	4,100	(1,121)	
Endowment I	1,085	2,004	3,000	(996)	
Endowment II	1,011	5,594	5,950	(356)	
Mission Offering	-	8,617	10,600	(1,983)	
Special Events Income	(454)	8,695	4,500	4,195	
Total Revenues	65,522	611,058	650,195	(39,137)	
Expenses					
Pastoral	16,684	161,957	162,891	(934)	
Missions	7,798	63,203	65,186	(1,983)	
Children's Ministry	2,059	19,165	20,121	(956)	
Confirmation & Youth	149	20,991	20,843	148	
Pastoral Care	4,475	31,921	31,815	106	
Membership	-	424	1,540	(1,116)	
Adult Education	-	400	960	(560)	
Services & Sacraments	-	118	300	(182)	
Fellowship	-	(89)	450	(539)	
Music	5,460	54,188	54,085	103	
Stewardship	-	1,135	2,495	(1,360)	
General & Administrative	9,886	98,928	109,853	(10,925)	Primarily lower supply expenses
Church Property	28,447	160,604	174,810	(14,206)	Primarily lower utilities and maintenance
Pageant	-	363	400	(38)	
Capital Reserve	2,322	16,254	16,254	-	
Total Expenses	77,279	629,560	662,003	(32,443)	
Net	(11,758)	(18,502)	(11,808)	(6,694)	
General Fund	(17,399)				
Capital Reserve	242,951				

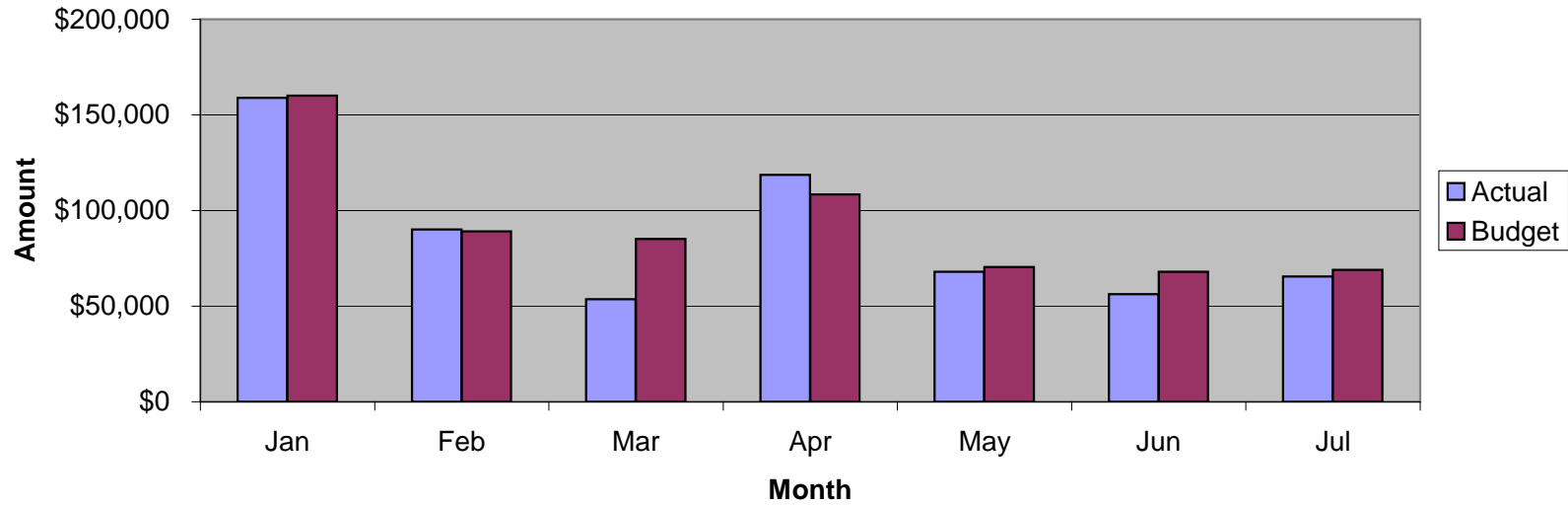
Monthly Pledges - Actual vs. Budget



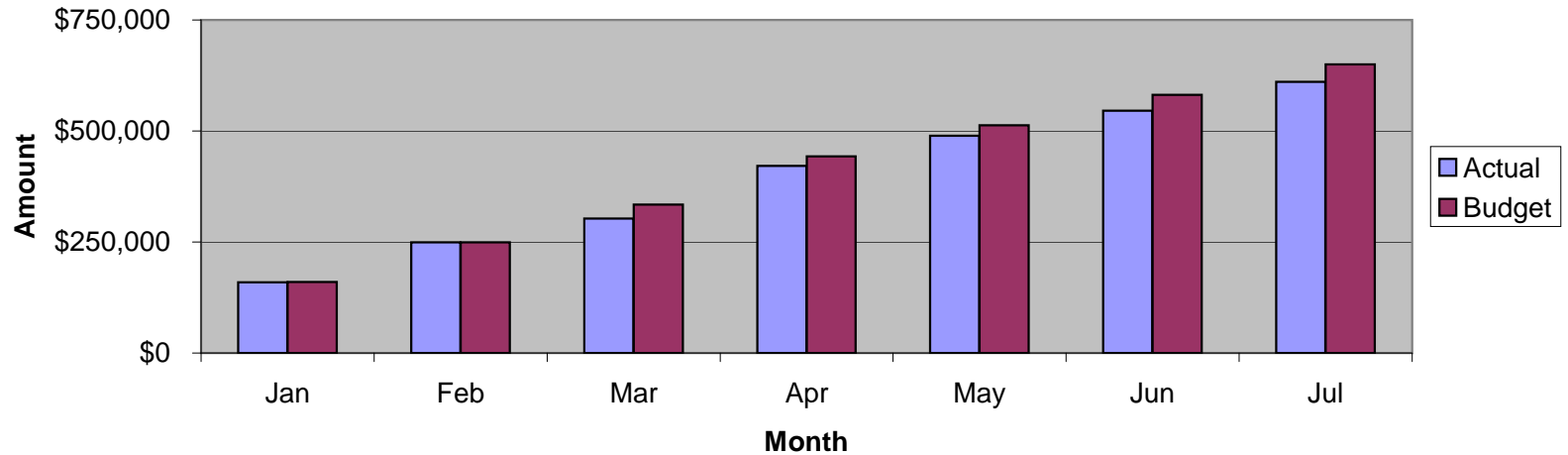
YTD Pledges - Actual vs. Budget



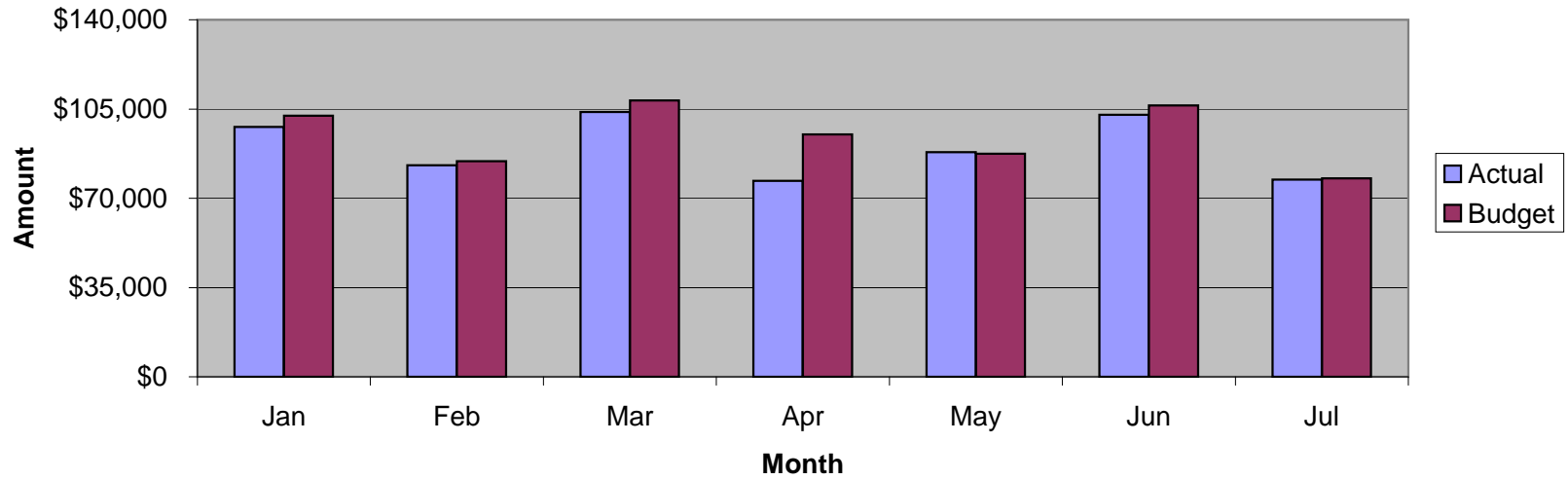
Monthly Revenue - Actual vs. Budget



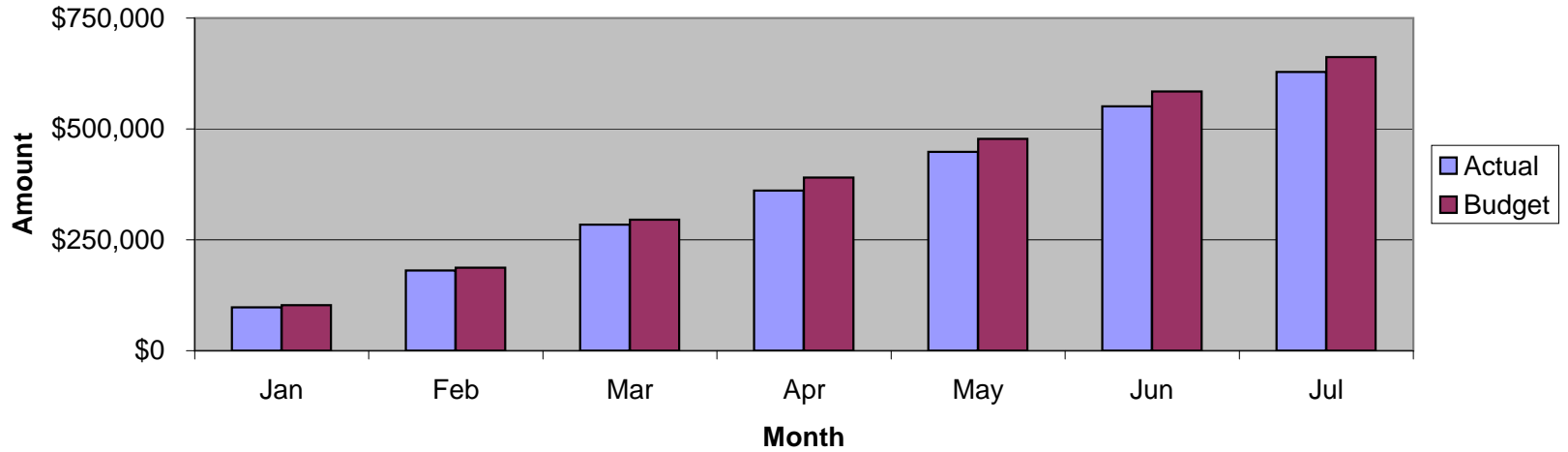
YTD Revenue - Actual vs. Budget



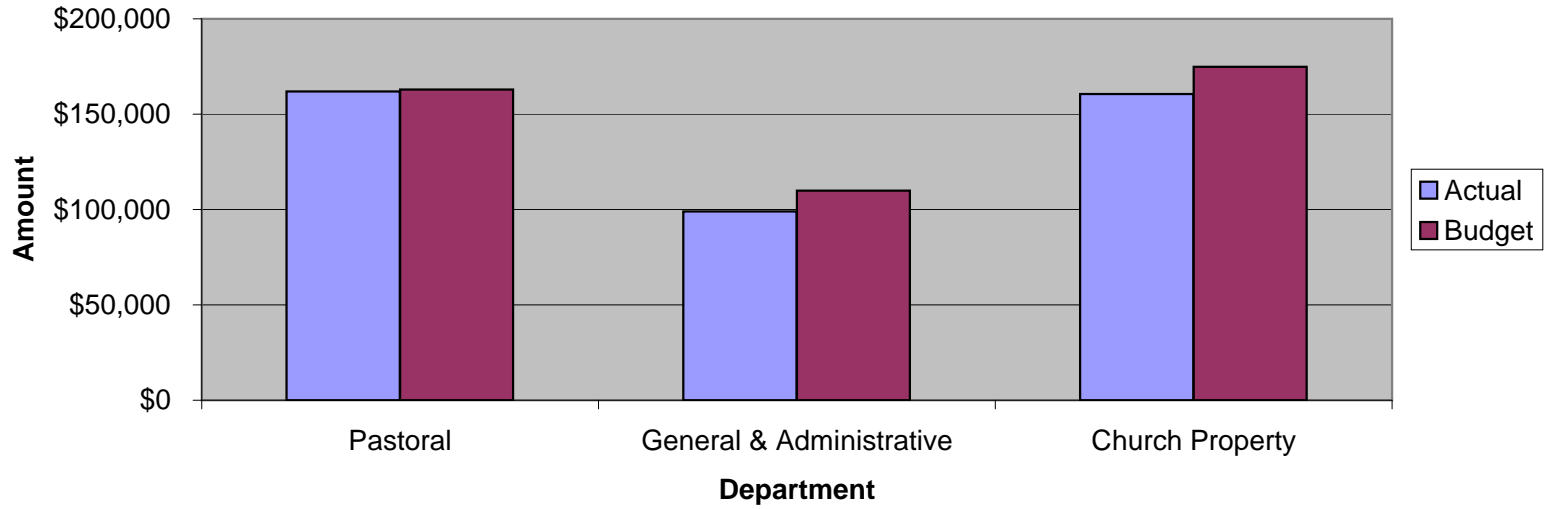
Monthly Expenses - Actual vs. Budget



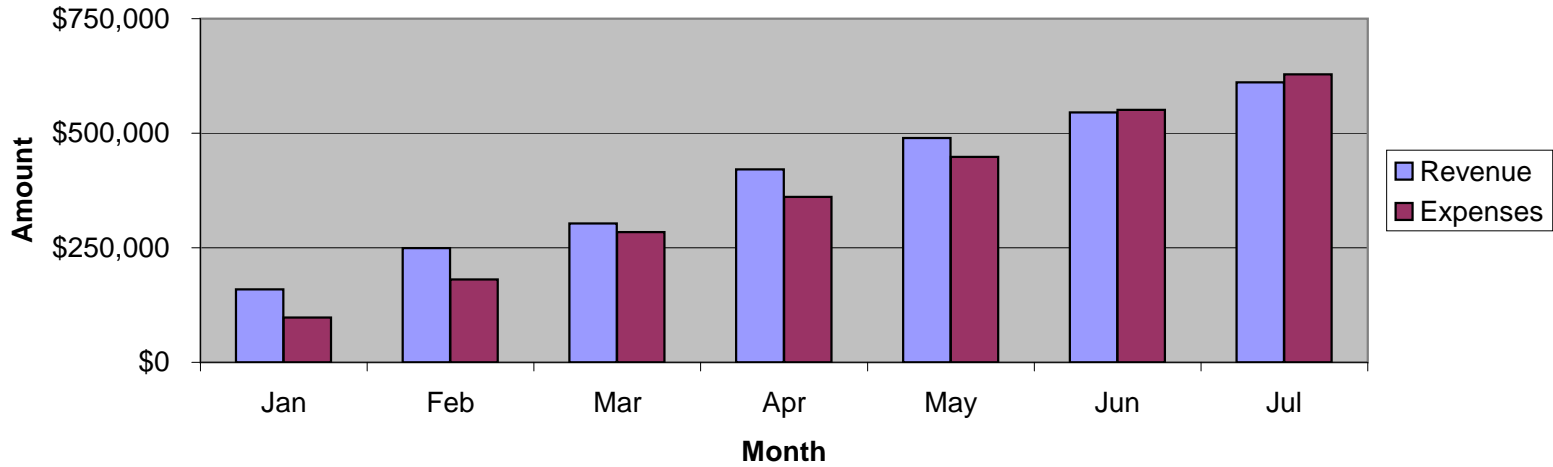
YTD Expenses - Actual vs. Budget



YTD Operations - Actual vs. Budget



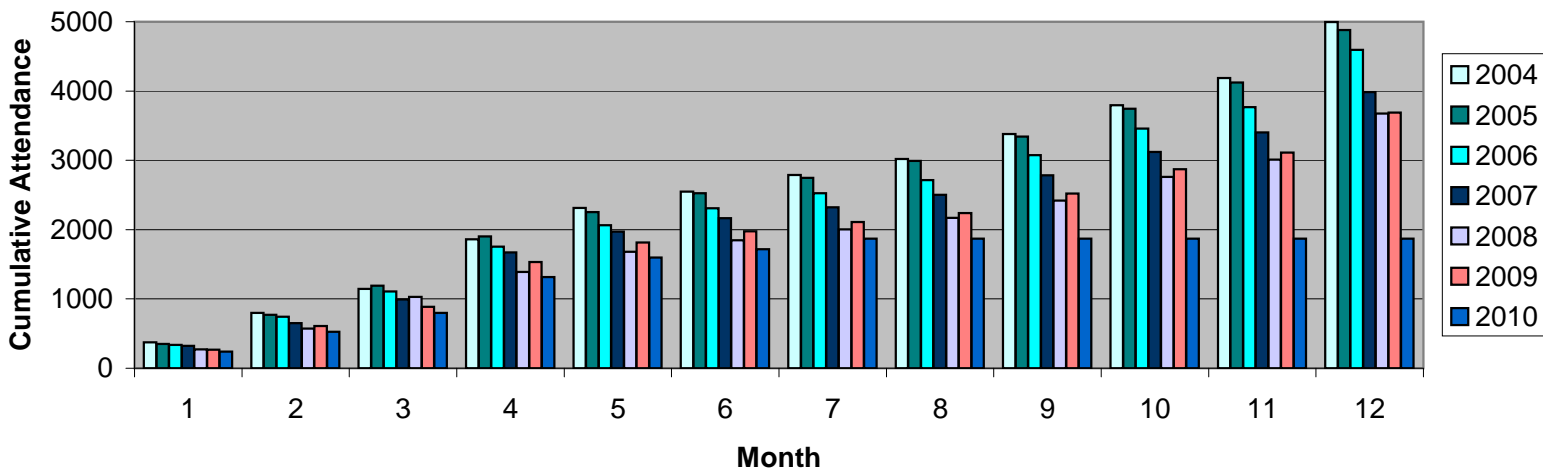
YTD Actual - Revenue & Expenses



Sunday Average Attendance - Monthly



Sunday Average Attendance - Cumulative



Glenview Community Church
Analysis of Revenues & Expenses - Summary Portrait 2010
July 2010

Accounts	MTO Actual (This Year)	MTO Budget (This Year)	YTO Actual (This Year)	YTO Budget (This Year)	YTO Actual (Last Year)	Annual Budget (This Year)
Revenues						
Total Revenues	\$65,521.70	\$69,040.00	\$611,058.03	\$650,195.00	\$721,733.25	\$1,150,615.00
Expenses						
Pastoral Expenses	\$16,683.86	\$17,253.00	\$161,956.54	\$162,891.00	\$228,085.99	\$266,039.00
Missions	\$7,798.00	\$7,798.00	\$63,203.25	\$65,186.00	\$65,242.50	\$118,582.00
Children's Ministry	\$2,058.65	\$1,911.00	\$19,164.78	\$20,121.00	\$19,030.61	\$34,208.00
Confirmation & Youth Ministry	\$149.18	\$235.00	\$20,990.90	\$20,843.00	\$20,908.03	\$34,598.00
Pastoral Care	\$4,475.37	\$4,545.00	\$31,920.70	\$31,815.00	\$31,126.08	\$54,504.00
Membership	\$0.00	\$0.00	\$424.09	\$1,540.00	\$9,940.05	\$2,600.00
Adult Education	\$0.00	\$0.00	\$400.00	\$960.00	\$1,000.00	\$1,700.00
Services & Sacraments	\$0.00	\$0.00	\$117.95	\$300.00	\$298.35	\$490.00
Fellowship	\$0.00	\$0.00	(\$88.90)	\$450.00	\$114.67	\$750.00
Music	\$5,459.57	\$6,011.00	\$54,187.50	\$54,085.00	\$41,578.76	\$89,321.00
General & Administrative	\$9,886.20	\$13,294.00	\$98,927.81	\$109,853.00	\$108,457.72	\$207,943.00
Stewardship	\$0.00	\$365.00	\$1,134.69	\$2,495.00	\$897.31	\$4,200.00
Church Property	\$28,446.54	\$24,075.00	\$160,604.34	\$174,810.00	\$168,808.09	\$291,205.00
Pageant	\$0.00	\$0.00	\$362.50	\$400.00	\$0.00	\$1,600.00
Capital Reserve	\$2,322.00	\$2,322.00	\$16,254.00	\$16,254.00	\$26,000.00	\$40,865.00
Long Range Plan Funds	\$0.00	\$0.00	\$0.00	\$0.00	\$0.00	\$0.00
Total Expenses	\$77,279.37	\$77,809.00	\$629,560.15	\$662,003.00	\$721,488.16	\$1,148,605.00
Net Total	(\$11,757.67)	(\$8,769.00)	(\$18,502.12)	(\$11,808.00)	\$245.09	\$2,010.00

July 2010

Accounts	MTDActual (This Year)	MTD Budget (This Year)	YTDActual (This Year)	YTD Budget (This Year)	YTDActual (Last Year)	Annual Budget (This Year)
Revenues						
9105 - Current Pledge Contributions	\$60,022.16	\$60,000.00	\$490,199.80	\$540,000.00	\$573,503.59	\$896,005.00
9107 - Non-Pledge Contributions	\$1,345.00	\$2,500.00	\$35,873.00	\$25,500.00	\$33,826.57	\$60,000.00
9109 - Pledge Overage Contributions	\$398.33	\$1,000.00	\$2,797.33	\$8,800.00	\$11,823.00	\$55,000.00
9110- Prior Year Pledge	\$0.00	\$0.00	\$9,950.00	\$10,000.00	\$36,076.03	\$10,000.00
9115 - Loose Offering	\$276.00	\$300.00	\$3,968.88	\$4,600.00	\$5,272.77	\$9,500.00
9124 - Church School Offering	\$0.00	\$0.00	\$198.93	\$300.00	\$60.50	\$500.00
9130 - Women's Association	\$0.00	\$0.00	\$10,000.00	\$7,500.00	\$13,100.00	\$10,000.00
9135 - Building Fees	\$1,174.00	\$0.00	\$11,431.00	\$6,400.00	\$5,700.00	\$9,960.00
9142 - Nursery School	\$0.00	\$0.00	\$18,715.55	\$18,700.00	\$21,350.55	\$35,200.00
9145 - Interest Income	\$9.05	\$40.00	\$34.98	\$245.00	\$398.57	\$450.00
9147 - Housing Trust Income	\$654.51	\$2,200.00	\$2,978.60	\$4,100.00	\$2,807.99	\$8,500.00
9155 - Endowment Income	\$1,085.43	\$3,000.00	\$2,003.83	\$3,000.00	\$0.00	\$5,500.00
9157 - Endowment Income II	\$1,011.49	\$0.00	\$5,594.08	\$5,950.00	\$6,170.18	\$10,000.00
9170 - Neighbors In Need	\$0.00	\$0.00	\$0.00	\$0.00	\$0.00	\$1,900.00
9175 - Thanksgiving	\$0.00	\$0.00	\$0.00	\$0.00	\$0.00	\$3,250.00
9180 - Christmas	\$0.00	\$0.00	\$200.00	\$0.00	\$0.00	\$9,250.00
9185 - Easter	\$0.00	\$0.00	\$6,978.25	\$8,750.00	\$9,765.50	\$8,750.00
9190 - One Great Hour of Sharing	\$0.00	\$0.00	\$1,439.00	\$1,850.00	\$1,878.00	\$1,850.00
9199 - Special Events Income	(\$454.27)	\$0.00	\$8,694.80	\$4,500.00	\$0.00	\$15,000.00
Total Revenues	\$65,521.70	\$69,040.00	\$611,058.03	\$650,195.00	\$721,733.25	\$1,150,615.00
Expenses						
Pastoral Expenses						
9302 - Salaries	\$8,272.34	\$8,272.00	\$57,906.38	\$57,904.00	\$74,045.96	\$99,268.00
9304 - Auto Expense	\$101.00	\$300.00	\$1,452.10	\$2,300.00	\$3,177.89	\$4,000.00
9306 - Expense Reimbursement	\$0.00	\$85.00	\$434.20	\$595.00	\$319.62	\$1,030.00
9308 - Annuities	\$0.00	\$0.00	\$19,511.31	\$19,500.00	\$26,172.98	\$26,015.00
9310 - Conferences / Continuing Educa	\$0.00	\$200.00	\$964.46	\$1,400.00	\$2,531.73	\$2,500.00
9312 - Senior Minister Allowance	\$0.00	\$50.00	\$714.60	\$275.00	\$195.68	\$750.00
9314 - Housing Allowance	\$7,212.84	\$7,213.00	\$50,489.88	\$50,491.00	\$72,985.01	\$88,554.00
9316 - Assoc. Minister Allowance	\$0.00	\$35.00	\$853.08	\$425.00	\$795.70	\$750.00
9382 - Insurance-Health	\$0.00	\$0.00	\$21,946.77	\$22,315.00	\$37,223.73	\$30,000.00
9384 - Social Security Add On	\$1,097.68	\$1,098.00	\$7,683.76	\$7,686.00	\$10,637.69	\$13,172.00
Total Pastoral Expenses	\$16,683.86	\$17,253.00	\$161,956.54	\$162,891.00	\$228,085.99	\$266,039.00
Missions						
9450 - Mission Offering	\$0.00	\$0.00	\$8,617.25	\$10,600.00	\$11,643.50	\$25,000.00
9454 - Missions	\$7,798.00	\$7,798.00	\$54,586.00	\$54,586.00	\$53,599.00	\$93,582.00
Total Missions	\$7,798.00	\$7,798.00	\$63,203.25	\$65,186.00	\$65,242.50	\$118,582.00
Children's Ministry						
9464 - Salaries-CM	\$1,764.75	\$1,765.00	\$15,667.05	\$15,667.00	\$16,159.18	\$26,700.00
9466 - SS-CM	\$135.00	\$136.00	\$1,198.50	\$1,199.00	\$1,236.15	\$2,043.00
9468 - Spiritual Formation	\$158.90	\$0.00	\$566.05	\$870.00	\$729.76	\$1,600.00
9472 - Teacher Training & Appreciation	\$0.00	\$0.00	\$0.00	\$365.00	\$168.59	\$365.00
9476 - CradleToddler Supplies	\$0.00	\$0.00	\$0.00	\$300.00	\$439.87	\$500.00
9488 - Fellowship	\$0.00	\$0.00	\$157.69	\$360.00	\$261.94	\$600.00
9490 - Education & Spiritual Formation	\$0.00	\$0.00	\$1,002.60	\$960.00	\$35.12	\$1,700.00
9494 - Mission & Outreach	\$0.00	\$0.00	\$247.89	\$90.00	\$0.00	\$150.00
9496 - Childcare	\$0.00	\$10.00	\$325.00	\$310.00	\$0.00	\$550.00
Total Children's Ministry	\$2,058.65	\$1,911.00	\$19,164.78	\$20,121.00	\$19,030.61	\$34,208.00
Confirmation & Youth Ministry						
9526 - Salaries-CY	\$0.00	\$0.00	\$15,604.80	\$15,604.00	\$15,150.00	\$26,008.00
9528 - SS-CY	\$0.00	\$0.00	\$1,193.76	\$1,194.00	\$1,158.96	\$1,990.00
9530 - Jr High - Confirmation	\$149.18	\$185.00	\$1,838.56	\$1,175.00	\$1,618.14	\$1,850.00
9532 - Jr High - Social	\$0.00	\$0.00	\$0.00	\$150.00	\$224.69	\$250.00
9536 - Sr High - Education	\$0.00	\$50.00	\$1,220.59	\$1,220.00	\$1,398.68	\$2,000.00
9538 - Sr High - Social	\$0.00	\$0.00	\$1,133.19	\$1,500.00	\$1,357.56	\$2,500.00
Total Confirmation & Youth Ministry	\$149.18	\$235.00	\$20,990.90	\$20,843.00	\$20,908.03	\$34,598.00
Pastoral Care						
9550 - Salaries-PN	\$4,475.37	\$4,475.00	\$31,327.59	\$31,325.00	\$30,713.34	\$53,704.00
9552 - Pastoral Care Board	\$0.00	\$70.00	\$593.11	\$490.00	\$412.74	\$800.00
Total Pastoral Care	\$4,475.37	\$4,545.00	\$31,920.70	\$31,815.00	\$31,126.08	\$54,504.00

Glenview Community Church
 Analysis of Revenues & Expenses - Detail Portrait 2010
 July 2010

Accounts	MTD Actual (This Year)	MTD Budget (This Year)	YTD Actual (This Year)	YTD Budget (This Year)	YTD Actual (Last Year)	Annual Budget (This Year)
Membership						
9572 - Salaries-Mbr	\$0.00	\$0.00	\$0.00	\$0.00	\$9,252.00	\$0.00
9574 - SS-Mbr	\$0.00	\$0.00	\$0.00	\$0.00	\$480.36	\$0.00
9576 - Membership	\$0.00	\$0.00	\$424.09	\$1,540.00	\$207.69	\$2,600.00
Total Membership	\$0.00	\$0.00	\$424.09	\$1,540.00	\$9,940.05	\$2,600.00
Adult Education						
9602 - Program	\$0.00	\$0.00	\$400.00	\$900.00	\$1,000.00	\$1,600.00
9614 - Miscellaneous	\$0.00	\$0.00	\$0.00	\$30.00	\$0.00	\$50.00
9616 - Literature & Library	\$0.00	\$0.00	\$0.00	\$30.00	\$0.00	\$50.00
Total Adult Education	\$0.00	\$0.00	\$400.00	\$960.00	\$1,000.00	\$1,700.00
Services & Sacraments						
9624 - Sacred Services	\$0.00	\$0.00	\$117.95	\$300.00	\$298.35	\$490.00
Total Services & Sacraments	\$0.00	\$0.00	\$117.95	\$300.00	\$298.35	\$490.00
Fellowship						
9636 - Special Functions	\$0.00	\$0.00	(\$88.90)	\$360.00	(\$42.00)	\$600.00
9640 - Miscellaneous	\$0.00	\$0.00	\$0.00	\$90.00	\$156.67	\$150.00
Total Fellowship	\$0.00	\$0.00	(\$88.90)	\$450.00	\$114.67	\$750.00
Music						
9648 - Salaries-Music	\$4,700.67	\$4,725.00	\$39,055.79	\$39,168.00	\$37,874.67	\$67,669.00
9650 - SS-Music	\$359.60	\$361.00	\$2,987.77	\$2,997.00	\$2,897.34	\$5,177.00
9652 - General -Instrumentalists	\$0.00	\$0.00	\$5,472.50	\$5,150.00	\$3,850.00	\$5,150.00
9654 - General - Organ & Piano Care	\$0.00	\$450.00	\$2,495.00	\$3,375.00	\$1,823.00	\$5,825.00
9656 - General - Cleaning Robes	\$0.00	\$35.00	\$245.00	\$245.00	\$0.00	\$450.00
9660 - General - Sub. Organist	\$175.00	\$90.00	\$800.00	\$600.00	\$950.00	\$1,050.00
9666 - Chancel Choir - Music	\$0.00	\$100.00	\$209.71	\$200.00	\$153.18	\$250.00
9668 - Chancel Choir - Misc.	\$0.00	\$90.00	\$250.00	\$630.00	\$116.41	\$1,100.00
9670 - Organ Music	\$224.30	\$20.00	\$383.57	\$290.00	\$334.32	\$500.00
9772 - Bell Choir - Music	\$0.00	\$70.00	\$1,059.38	\$490.00	\$1,211.15	\$850.00
9780 - Children's Choir - Music	\$0.00	\$70.00	\$568.78	\$490.00	\$144.94	\$850.00
9782 - Children's Choir - Misc.	\$0.00	\$0.00	\$0.00	\$0.00	\$175.06	\$0.00
9784 - Copyright Expenses	\$0.00	\$0.00	\$660.00	\$450.00	\$646.90	\$450.00
9790 - Music Transfer	\$0.00	\$0.00	\$0.00	\$0.00	(\$8,598.21)	\$0.00
Total Music	\$5,459.57	\$6,011.00	\$54,187.50	\$54,085.00	\$41,578.76	\$89,321.00
General & Administrative						
9822 - Postage (except B'dcaster)	\$518.99	\$600.00	\$3,554.83	\$4,500.00	\$5,245.14	\$7,700.00
9830 - Social Security	\$589.73	\$590.00	\$4,128.11	\$4,127.00	\$4,803.68	\$7,077.00
9832 - Office Staff Salaries	\$7,708.83	\$7,709.00	\$53,961.81	\$53,961.00	\$63,085.12	\$92,506.00
9834 - Payroll Service	\$346.65	\$350.00	\$3,024.28	\$2,800.00	\$2,501.71	\$4,700.00
9836 - Telephone	\$115.13	\$650.00	\$3,554.56	\$4,550.00	\$4,356.00	\$8,000.00
9838 - Stationery & Supplies	\$145.40	\$1,000.00	\$3,225.93	\$7,000.00	\$6,493.28	\$12,000.00
9840 - Equip. Maintenance/ Repair	\$776.83	\$1,550.00	\$9,297.44	\$10,850.00	\$10,059.25	\$18,700.00
9842 - Broadcaster	\$0.00	\$315.00	\$2,891.33	\$2,205.00	\$1,784.03	\$3,800.00
9844 - Financial Review	\$0.00	\$0.00	\$0.00	\$0.00	\$0.00	\$10,000.00
9846 - Communications/Promotions	\$0.00	\$125.00	\$405.00	\$825.00	\$1,110.50	\$1,400.00
9848 - Kitchen	\$79.24	\$125.00	\$1,487.61	\$875.00	\$749.54	\$1,500.00
9850 - Insurance-Prop/Casualty/Work	(\$433.00)	\$0.00	\$12,743.85	\$16,200.00	\$7,675.45	\$37,200.00
9852 - Miscellaneous	\$0.00	\$40.00	\$51.59	\$280.00	\$50.00	\$500.00
9854 - Office Equipment Purchase	\$0.00	\$190.00	\$361.07	\$1,330.00	(\$129.99)	\$2,260.00
9855 - Executive Board Expenses	\$0.00	\$0.00	\$0.00	\$0.00	\$401.41	\$0.00
9856 - Bank Fees	\$38.40	\$50.00	\$240.40	\$350.00	\$272.60	\$600.00
Total General & Administrative	\$9,886.20	\$13,294.00	\$98,927.81	\$109,853.00	\$108,457.72	\$207,943.00
Stewardship						
9802 - Offering Envelopes	\$0.00	\$40.00	(\$110.00)	\$280.00	\$578.11	\$450.00
9803 - Stationery	\$0.00	\$150.00	\$0.00	\$1,050.00	\$0.00	\$1,800.00
9804 - Postage	\$0.00	\$95.00	\$0.00	\$605.00	\$319.20	\$950.00
9810 - Miscellaneous	\$0.00	\$80.00	\$1,244.69	\$560.00	\$0.00	\$1,000.00
Total Stewardship	\$0.00	\$365.00	\$1,134.69	\$2,495.00	\$897.31	\$4,200.00
Church Property						
9862 - Facility Staff-Salaries	\$11,133.83	\$10,950.00	\$76,493.19	\$76,175.00	\$84,205.91	\$130,925.00
9863 - Facility Staff - Overtime expense	\$34.50	\$200.00	\$1,306.50	\$1,450.00	\$0.00	\$2,500.00
9864 - Social Security	\$854.39	\$850.00	\$5,951.72	\$5,910.00	\$6,058.99	\$10,160.00
9868 - Audio/Video/Telephonics	\$0.00	\$0.00	\$84.23	\$0.00	\$47.48	\$0.00

Glenview Community Church
 Analysis of Revenues & Expenses - Detail Portrait 2010
 July 2010

Accounts	MTD Actual (This Year)	MTD Budget (This Year)	YTD Actual (This Year)	YTD Budget (This Year)	YTD Actual (Last Year)	Annual Budget (This Year)
9870 - Electricity	\$1,957.51	\$2,500.00	\$13,209.62	\$14,800.00	\$14,478.55	\$27,000.00
9872 - Water	\$699.92	\$0.00	\$1,534.54	\$1,750.00	\$1,109.48	\$3,500.00
9874 - N. I. Gas	\$63.11	\$100.00	\$10,978.57	\$21,300.00	\$12,320.19	\$26,600.00
9876 - HVAC Repair & Maintenance	\$8,725.04	\$800.00	\$9,511.38	\$5,600.00	\$0.00	\$10,000.00
9878 - Building Repair and Maintenance	\$2,345.52	\$3,300.00	\$18,134.37	\$17,000.00	\$16,825.93	\$29,000.00
9880 - Maintenance Contracts	\$694.72	\$5,000.00	\$11,714.41	\$22,700.00	\$28,803.66	\$40,000.00
9882 - Scavenger	\$365.63	\$375.00	\$2,793.44	\$2,625.00	\$2,548.32	\$4,500.00
9884 - Furn., Fixt., Equip. Purchase	\$972.37	\$0.00	\$7,592.99	\$5,500.00	\$2,409.58	\$7,020.00
9885 - Non-contract Landscaping	\$600.00	\$0.00	\$1,299.38	\$0.00	\$0.00	\$0.00
Total Church Property	\$28,446.54	\$24,075.00	\$160,604.34	\$174,810.00	\$168,808.09	\$291,205.00
Pageant						
9912 - Pageant	\$0.00	\$0.00	\$362.50	\$400.00	\$0.00	\$1,600.00
Total Pageant	\$0.00	\$0.00	\$362.50	\$400.00	\$0.00	\$1,600.00
Capital Reserve						
9910 - Capital Reserve Expense	\$2,322.00	\$2,322.00	\$16,254.00	\$16,254.00	\$26,000.00	\$40,865.00
Total Capital Reserve	\$2,322.00	\$2,322.00	\$16,254.00	\$16,254.00	\$26,000.00	\$40,865.00
Total Expenses	\$77,279.37	\$77,809.00	\$629,560.15	\$662,003.00	\$721,488.16	\$1,148,605.00
Net Total	(\$11,757.67)	(\$8,769.00)	(\$18,502.12)	(\$11,808.00)	\$245.09	\$2,010.00

Glenview Community Church
 Balance Sheet
 July 2010

Accounts

Assets

Current Assets

Cash

1010 - Operating Account	\$91,463.03
1200 - Special Petty Cash Fund	<u>\$1,000.00</u>

Total Cash 92,463.03

Investments

1110 - Housing Trust	\$396,566.00
1120 - Merrill Lynch Govt. MF	\$229,281.33
1130 - Nursery School Vanguard	\$95,240.25
1140 - Romeiser Trust Account	\$174,589.00
1160 - Endowment	\$138,847.00
1170 - Wm. Blair Managed Cash	\$300,022.61
1180 - Nursery School GSB CD#323510	\$25,637.30
1185 - Endowment Fund II	\$508,287.14
1190 - Nursery School GSB CD#323512	<u>\$31,202.25</u>

Total Investments 899,672.88

Prepaid Expenses

1515 - Vision Benefits Total	<u>\$268.20</u>
Prepaid Expenses Total	<u>\$268.20</u>

\$1,992,404.11

Current Assets

Fixed Assets

1770 - Church Land	\$100,126.50
1790 - Church Garage & Contents	\$10,074.00
1800 - Church Building	\$5,430,585.00
1810 - Church Furnishings	\$426,130.00
1815 - Office Equipment	\$91,458.00
1816 - Art & Music Collections	\$50,400.00
1817 - Organ	\$896,000.00
1820 - Canoes	\$1,200.00
1825 - Accumulated Depreciation	<u>(\$742,695.00)</u>

Total Fixed Assets \$6,263,278.50

Total Assets \$8,255,682.61

Liabilities, Fund Principal, & Restricted Funds

Liabilities Fixed

Assets

0001 - Represented by Fixed Assets	<u>\$6,263,278.50</u>
------------------------------------	-----------------------

Total Fixed Assets \$6,263,278.50

Total Liabilities \$6,263,278.50

Fund Principal

0002 - Beginning Balance-General Fund	\$1,102.69
Excess Cash Received	<u>(\$18,502.12)</u>

Total Fund Principal and Excess Cash Received (\$17,399.43)

Restricted Funds

Total Temporarily Restricted Total	\$791,351.65
Permanently Restricted Total	<u>\$1,218,451.89</u>

Restricted Funds \$2,009,803.54

Total Liabilities, Fund Principal, & Restricted Funds \$8,255,682.61

Glenview Community Church
 Analysis of Revenues & Expenses- Summary Portrait 2010
 June 2010

Accounts	MTO Actual (This Year)	MTO Budget (This Year)	YTO Actual (This Year)	YTO Budget (This Year)	YTO Actual (Last Year)	Annual Budget (This Year)
Revenues						
Total Revenues	\$56,214.49	\$68,040.00	\$545,536.33	\$581,155.00	\$675,509.73	\$1,150,615.00
Expenses						
Pastoral Expenses	\$31,131.91	\$31,283.00	\$145,272.68	\$145,638.00	\$205,345.90	\$266,039.00
Missions	\$7,798.00	\$7,798.00	\$55,405.25	\$57,388.00	\$57,585.50	\$118,582.00
Children's Ministry	\$3,840.38	\$3,109.00	\$17,106.13	\$18,210.00	\$15,722.81	\$34,208.00
Confirmation & Youth Ministry	\$4,537.59	\$3,435.00	\$20,841.72	\$20,608.00	\$20,299.15	\$34,598.00
Pastoral Care	\$4,568.48	\$4,545.00	\$27,445.33	\$27,270.00	\$26,738.46	\$54,504.00
Membership	\$0.00	\$215.00	\$424.09	\$1,540.00	\$9,940.05	\$2,600.00
Adult Education	\$0.00	\$155.00	\$400.00	\$960.00	\$1,000.00	\$1,700.00
Services & Sacraments	\$0.00	\$50.00	\$117.95	\$300.00	\$298.35	\$490.00
Fellowship	\$0.00	\$75.00	(\$88.90)	\$450.00	\$114.67	\$750.00
Music	\$5,337.76	\$6,034.00	\$48,727.93	\$48,074.00	\$42,980.55	\$89,321.00
General & Administrative	\$18,972.57	\$20,819.00	\$89,041.61	\$96,550.00	\$98,728.24	\$207,943.00
Stewardship	\$140.00	\$355.00	\$1,134.69	\$2,130.00	\$191.20	\$4,200.00
Church Property	\$24,147.26	\$26,175.00	\$132,157.80	\$150,735.00	\$145,722.52	\$291,205.00
Pageant	\$0.00	\$0.00	\$362.50	\$400.00	\$0.00	\$1,600.00
Capital Reserve	\$2,322.00	\$2,322.00	\$13,932.00	\$13,932.00	\$26,000.00	\$40,865.00
Long Range Plan Funds	\$0.00	\$0.00	\$0.00	\$0.00	\$0.00	\$0.00
Total Expenses	\$102,795.95	\$106,370.00	\$552,280.78	\$584,194.00	\$650,667.40	\$1,148,605.00
Net Total	(\$46,581.46)	(\$38,330.00)	(\$6,744.45)	(\$3,039.00)	\$24,842.33	\$2,010.00

June 2010

Accounts	MTD Actual (This Year)	MTD Budget (This Year)	YTD Actual (This Year)	YTD Budget (This Year)	YTD Actual (Last Year)	Annual Budget (This Year)
Revenues						
9105 - Current Pledge Contributions	\$38,856.60	\$60,000.00	\$430,177.64	\$480,000.00	\$529,873.05	\$896,005.00
9107 - Non-Pledge Contributions	\$2,013.00	\$2,500.00	\$34,528.00	\$23,000.00	\$32,371.57	\$60,000.00
9109 - Pledge Overage Contributions	\$345.00	\$1,000.00	\$2,399.00	\$7,800.00	\$11,078.00	\$55,000.00
9110- Prior Year Pledge	\$0.00	\$0.00	\$9,950.00	\$10,000.00	\$36,076.03	\$10,000.00
9115 - Loose Offering	\$188.00	\$300.00	\$3,692.88	\$4,300.00	\$4,905.88	\$9,500.00
9124 - Church School Offering	\$0.00	\$0.00	\$198.93	\$300.00	\$60.50	\$500.00
9130 - Women's Association	\$2,500.00	\$0.00	\$10,000.00	\$7,500.00	\$13,100.00	\$10,000.00
9135 - Building Fees	\$3,086.00	\$0.00	\$10,257.00	\$6,400.00	\$5,700.00	\$9,960.00
9142 - Nursery School	\$0.00	\$0.00	\$18,715.55	\$18,700.00	\$21,350.55	\$35,200.00
9145 - Interest Income	\$5.33	\$40.00	\$25.93	\$205.00	\$372.48	\$450.00
9147 - Housing Trust Income	\$0.00	\$0.00	\$2,324.09	\$1,900.00	\$2,807.99	\$8,500.00
9155 - Endowment Income	\$0.00	\$0.00	\$918.40	\$0.00	\$0.00	\$5,500.00
9157 - Endowment Income II	\$767.75	\$1,200.00	\$4,582.59	\$5,950.00	\$6,170.18	\$10,000.00
9170 - Neighbors In Need	\$0.00	\$0.00	\$0.00	\$0.00	\$0.00	\$1,900.00
9175 - Thanksgiving	\$0.00	\$0.00	\$0.00	\$0.00	\$0.00	\$3,250.00
9180 - Christmas	\$0.00	\$0.00	\$200.00	\$0.00	\$0.00	\$9,250.00
9185 - Easter	\$0.00	\$0.00	\$6,978.25	\$8,750.00	\$9,765.50	\$8,750.00
9190 - One Great Hour of Sharing	\$0.00	\$0.00	\$1,439.00	\$1,850.00	\$1,878.00	\$1,850.00
9199 - Special Events Income	\$8,452.81	\$3,000.00	\$9,149.07	\$4,500.00	\$0.00	\$15,000.00
Total Revenues	\$56,214.49	\$68,040.00	\$545,536.33	\$581,155.00	\$675,509.73	\$1,150,615.00
Expenses						
Pastoral Expenses						
9302 - Salaries	\$8,272.34	\$8,272.00	\$49,634.04	\$49,632.00	\$63,470.52	\$99,268.00
9304 - Auto Expense	\$260.50	\$300.00	\$1,351.10	\$2,000.00	\$3,000.24	\$4,000.00
9306 - Expense Reimbursement	\$167.79	\$85.00	\$434.20	\$510.00	\$319.62	\$1,030.00
9308 - Annuities	\$6,503.77	\$6,500.00	\$19,511.31	\$19,500.00	\$26,172.98	\$26,015.00
9310 - Conferences / Continuing Educa	\$301.40	\$200.00	\$964.46	\$1,200.00	\$2,531.73	\$2,500.00
9312 - Senior Minister Allowance	\$0.00	\$50.00	\$714.60	\$225.00	\$195.68	\$750.00
9314 - Housing Allowance	\$7,212.84	\$7,213.00	\$43,277.04	\$43,278.00	\$62,558.58	\$88,554.00
9316 - Assoc. Minister Allowance	\$0.00	\$65.00	\$853.08	\$390.00	\$754.80	\$750.00
9382 - Insurance--Health	\$7,315.59	\$7,500.00	\$21,946.77	\$22,315.00	\$37,223.73	\$30,000.00
9384 - Social Security Add On	\$1,097.68	\$1,098.00	\$6,586.08	\$6,588.00	\$9,118.02	\$13,172.00
Total Pastoral Expenses	\$31,131.91	\$31,283.00	\$145,272.68	\$145,638.00	\$205,345.90	\$266,039.00
Missions						
9450 - Mission Offering	\$0.00	\$0.00	\$8,617.25	\$10,600.00	\$11,643.50	\$25,000.00
9454 - Missions	\$7,798.00	\$7,798.00	\$46,788.00	\$46,788.00	\$45,942.00	\$93,582.00
Total Missions	\$7,798.00	\$7,798.00	\$55,405.25	\$57,388.00	\$57,585.50	\$118,582.00
Children's Ministry						
9464 - Salaries-CM	\$2,317.05	\$2,317.00	\$13,902.30	\$13,902.00	\$14,445.84	\$26,700.00
9466 - SS-CM	\$177.25	\$177.00	\$1,063.50	\$1,063.00	\$1,105.08	\$2,043.00
9468 - Spiritual Formation	\$366.65	\$145.00	\$407.15	\$870.00	(\$68.83)	\$1,600.00
9472 - Teacher Training & Appreciation	\$0.00	\$150.00	\$0.00	\$365.00	\$0.00	\$365.00
9476 - Cradle/Toddler Supplies	\$0.00	\$50.00	\$0.00	\$300.00	\$25.00	\$500.00
9488 - Fellowship	\$57.28	\$60.00	\$157.69	\$360.00	\$203.78	\$600.00
9490 - Education & Spiritual Formation	\$922.15	\$160.00	\$1,002.60	\$960.00	\$11.94	\$1,700.00
9494 - Mission & Outreach	\$0.00	\$0.00	\$247.89	\$90.00	\$0.00	\$150.00
9496 - Childcare	\$0.00	\$50.00	\$325.00	\$300.00	\$0.00	\$550.00
Total Children's Ministry	\$3,840.38	\$3,109.00	\$17,106.13	\$18,210.00	\$15,722.81	\$34,208.00
Confirmation & Youth Ministry						
9526 - Salaries-CY	\$2,600.80	\$2,601.00	\$15,604.80	\$15,604.00	\$15,150.00	\$26,008.00
9528 - SS-CY	\$198.96	\$199.00	\$1,193.76	\$1,194.00	\$1,158.96	\$1,990.00
9530 - Jr High - Confirmation	\$1,199.90	\$165.00	\$1,689.38	\$990.00	\$1,034.26	\$1,850.00
9532 - Jr High - Social	\$0.00	\$25.00	\$0.00	\$150.00	\$199.69	\$250.00
9536 - Sr High - Education	\$359.25	\$195.00	\$1,220.59	\$1,170.00	\$1,398.68	\$2,000.00
9538 - Sr High - Social	\$178.68	\$250.00	\$1,133.19	\$1,500.00	\$1,357.56	\$2,500.00
Total Confirmation & Youth Ministry	\$4,537.59	\$3,435.00	\$20,841.72	\$20,608.00	\$20,299.15	\$34,598.00
Pastoral Care						
9550 - Salaries-PN	\$4,475.37	\$4,475.00	\$26,852.22	\$26,850.00	\$26,325.72	\$53,704.00
9552 - Pastoral Care Board	\$93.11	\$70.00	\$593.11	\$420.00	\$412.74	\$800.00
Totill Pastoral Care	\$4,568.48	\$4,545.00	\$27,445.33	\$27,270.00	\$26,738.46	\$54,504.00

June 2010

Accounts	MTD Actual (This Year)	MTD Budget (This Year)	YTD Actual (This Year)	YTD Budget (This Year)	YTD Actual (Last Year)	Annual Budget (This Year)
Membership						
9572 - Salaries-Mbr	\$0.00	\$0.00	\$0.00	\$0.00	\$9,252.00	\$0.00
9574 - SS-Mbr	\$0.00	\$0.00	\$0.00	\$0.00	\$480.36	\$0.00
9576 - Membership	\$0.00	\$215.00	\$424.09	\$1,540.00	\$207.69	\$2,600.00
Total Membership	\$0.00	\$215.00	\$424.09	\$1,540.00	\$9,940.05	\$2,600.00
Adult Education						
9602 - Program	\$0.00	\$150.00	\$400.00	\$900.00	\$1,000.00	\$1,600.00
9614 - Miscellaneous	\$0.00	\$5.00	\$0.00	\$30.00	\$0.00	\$50.00
9616 - Literature & Library	\$0.00	\$0.00	\$0.00	\$30.00	\$0.00	\$50.00
Total Adult Education	\$0.00	\$155.00	\$400.00	\$960.00	\$1,000.00	\$1,700.00
Services & Sacraments						
9624 - Sacred Services	\$0.00	\$50.00	\$117.95	\$300.00	\$298.35	\$490.00
Total Services & Sacraments	\$0.00	\$50.00	\$117.95	\$300.00	\$298.35	\$490.00
Fellowship						
9636 - Special Functions	\$0.00	\$60.00	(\$88.90)	\$360.00	(\$42.00)	\$600.00
9640 - Miscellaneous	\$0.00	\$15.00	\$0.00	\$90.00	\$156.67	\$150.00
Total Fellowship	\$0.00	\$75.00	(\$88.90)	\$450.00	\$114.67	\$750.00
Music						
9648 - Salaries-Music	\$4,700.67	\$4,723.00	\$34,355.12	\$34,443.00	\$33,310.91	\$67,669.00
9650 - SS-Music	\$359.60	\$361.00	\$2,628.17	\$2,636.00	\$2,548.22	\$5,177.00
9652 - General - Instrumentalists	\$0.00	\$0.00	\$5,472.50	\$5,150.00	\$3,850.00	\$5,150.00
9654 - General - Organ & Piano Care	\$0.00	\$450.00	\$2,495.00	\$2,925.00	\$1,823.00	\$5,825.00
9656 - General - Cleaning Robes	\$245.00	\$35.00	\$245.00	\$210.00	\$0.00	\$450.00
9660 - General - Sub. Organist	\$0.00	\$90.00	\$625.00	\$510.00	\$600.00	\$1,050.00
9666 - Chancel Choir - Music	\$0.00	\$100.00	\$209.71	\$100.00	\$153.18	\$250.00
9668 - Chancel Choir - Misc.	\$0.00	\$90.00	\$250.00	\$540.00	\$116.41	\$1,100.00
9670 - Organ Music	\$32.49	\$45.00	\$159.27	\$270.00	\$45.75	\$500.00
9772 - Bell Choir - Music	\$0.00	\$70.00	\$1,059.38	\$420.00	\$1,042.95	\$850.00
9780 - Children's Choir - Music	\$0.00	\$70.00	\$568.78	\$420.00	\$144.94	\$850.00
9782 - Children's Choir - Misc.	\$0.00	\$0.00	\$0.00	\$0.00	\$175.06	\$0.00
9784 - Copyright Expenses	\$0.00	\$0.00	\$660.00	\$450.00	\$646.90	\$450.00
9790 - Music Transfer	\$0.00	\$0.00	\$0.00	\$0.00	(\$1,476.77)	\$0.00
Total Music	\$5,337.76	\$6,034.00	\$48,727.93	\$48,074.00	\$42,980.55	\$89,321.00
General & Administrative						
9822 - Postage (except B'dcaster)	\$338.02	\$650.00	\$3,035.84	\$3,900.00	\$4,975.23	\$7,700.00
9830 - Social Security	\$589.73	\$590.00	\$3,538.38	\$3,537.00	\$4,231.13	\$7,077.00
9832 - Office Staff Salaries	\$7,708.83	\$7,709.00	\$46,252.98	\$46,252.00	\$55,600.78	\$92,506.00
9834 - Payroll Service	\$388.68	\$350.00	\$2,677.63	\$2,450.00	\$2,160.60	\$4,700.00
9836 - Telephone	\$866.22	\$650.00	\$3,439.43	\$3,900.00	\$4,157.12	\$8,000.00
9838 - Stationery & Supplies	\$364.88	\$1,000.00	\$3,080.53	\$6,000.00	\$6,350.14	\$12,000.00
9840 - Equip. Maintenance/ Repair	\$780.52	\$1,550.00	\$8,520.61	\$9,300.00	\$9,378.50	\$18,700.00
9842 - Broadcaster	\$0.00	\$315.00	\$2,891.33	\$1,890.00	\$1,784.03	\$3,800.00
9844 - Financial Review	\$0.00	\$0.00	\$0.00	\$0.00	\$0.00	\$10,000.00
9846 - Communications/Promotions	\$150.00	\$100.00	\$405.00	\$700.00	\$1,110.50	\$1,400.00
9848 - Kitchen	\$252.22	\$125.00	\$1,408.37	\$750.00	\$749.54	\$1,500.00
9850 - Insurance--Prop/Casualty/Work	\$7,197.50	\$7,500.00	\$13,176.85	\$16,200.00	\$7,675.45	\$37,200.00
9852 - Miscellaneous	\$15.49	\$40.00	\$51.59	\$240.00	\$50.00	\$500.00
9854 - Office Equipment Purchase	\$321.08	\$190.00	\$361.07	\$1,140.00	(\$129.99)	\$2,260.00
9855 - Executive Board Expenses	\$0.00	\$0.00	\$0.00	\$0.00	\$401.41	\$0.00
9856 - Bank Fees	(\$0.60)	\$50.00	\$202.00	\$300.00	\$233.80	\$600.00
Total General & Administrative	\$18,972.57	\$20,819.00	\$89,041.61	\$96,559.00	\$98,728.24	\$207,943.00
Stewardship						
9802 - Offering Envelopes	\$0.00	\$40.00	(\$110.00)	\$240.00	(\$128.00)	\$450.00
9803 - Stationery	\$0.00	\$150.00	\$0.00	\$900.00	\$0.00	\$1,800.00
9804 - Postage	\$0.00	\$85.00	\$0.00	\$510.00	\$319.20	\$950.00
9810 - Miscellaneous	\$140.00	\$80.00	\$1,244.69	\$480.00	\$0.00	\$1,000.00
Total Stewardship	\$140.00	\$355.00	\$1,134.69	\$2,130.00	\$191.20	\$4,200.00
Church Property						
9862 - Facility Staff-Salaries	\$11,402.08	\$10,950.00	\$65,359.36	\$65,225.00	\$73,380.60	\$130,925.00
9863 - Facility Staff - Overtime expense	\$108.00	\$200.00	\$1,272.00	\$1,250.00	\$0.00	\$2,500.00
9864 - Social Security	\$880.54	\$850.00	\$5,097.33	\$5,060.00	\$5,277.51	\$10,160.00
9368 - Audio/Video/Telephonics	\$0.00	\$0.00	\$84.23	\$0.00	\$0.00	\$0.00

Glenview Community Church
 Analysis of Revenues & Expenses - Detail Portrait 2010
 June 2010

Accounts	MTD Actual (This Year)	MTD Budget (This Year)	YTD Actual (This Year)	YTD Budget (This Year)	YTD Actual (Last Year)	Annual Budget (This Year)
9870 - Electricity	\$1,868.25	\$2,100.00	\$11,252.11	\$12,300.00	\$12,602.46	\$27,000.00
9872 - Water	\$0.00	\$900.00	\$834.62	\$1,750.00	\$536.10	\$3,500.00
9874 - N. I. Gas	\$136.99	\$1,500.00	\$10,915.46	\$21,200.00	\$12,320.19	\$26,600.00
9876 - HVAC Repair & Maintenance	\$0.00	\$800.00	\$786.34	\$4,800.00	\$0.00	\$10,000.00
9878 - Building Repair and Maintenance	\$6,977.77	\$3,500.00	\$15,788.85	\$13,700.00	\$11,164.01	\$29,000.00
9880 - Maintenance Contracts	\$2,408.00	\$5,000.00	\$11,019.69	\$17,700.00	\$26,170.91	\$40,000.00
9882 - Scavenger	\$365.63	\$375.00	\$2,427.81	\$2,250.00	\$2,187.75	\$4,500.00
9884 - Furn., Fixt., Equip. Purchase	\$0.00	\$0.00	\$6,620.62	\$5,500.00	\$2,082.99	\$7,020.00
9885 - Non-contract Landscaping	\$0.00	\$0.00	\$699.38	\$0.00	\$0.00	\$0.00
Total Church Property	\$24,147.26	\$26,175.00	\$132,157.80	\$150,735.00	\$145,722.52	\$291,205.00
Pageant						
9912 - Pageant	\$0.00	\$0.00	\$362.50	\$400.00	\$0.00	\$1,600.00
Total Pageant	\$0.00	\$0.00	\$362.50	\$400.00	\$0.00	\$1,600.00
Capital Reserve						
9910 - Capital Reserve Expense	\$2,322.00	\$2,322.00	\$13,932.00	\$13,932.00	\$26,000.00	\$40,865.00
Total Capital Reserve	\$2,322.00	\$2,322.00	\$13,932.00	\$13,932.00	\$26,000.00	\$40,865.00
Total Expenses	\$102,795.95	\$106,370.00	\$552,280.78	\$584,194.00	\$650,667.40	\$1,148,605.00
Net Total	(\$46,581.46)	(\$38,330.00)	(\$6,744.45)	(\$3,039.00)	\$24,842.33	\$2,010.00

Accounts

Assets

Current Assets

Cash

1010 - Operating Account	\$113,050.15	
1200 - Special Petty Cash Fund	<u>\$1,000.00</u>	
Total Cash	\$114,050.15	

Investments

1110 - Housing Trust	\$383,020.00	
1120 - Merrill Lynch Govt. MF	\$229,262.07	
1130 - Nursery School Vanguard	\$95,240.25	
1140 - Romeiser Trust Account	\$173,805.00	
1160 - Endowment	\$137,948.00	
1170 - Wm. Blair Managed Cash	\$300,022.61	
1180 - Nursery School GSB CD#323510	\$25,637.30	
1185 - Endowment Fund II	\$472,800.19	
1190 - Nursery School GSB CD#323512	<u>\$31,202.25</u>	

Total Investments

\$1,848,937.67

Prepaid Expenses

\$289.50

Total Current Assets

\$1,963,277.32

Fixed Assets

1770 - Church Land	\$100,126.50	
1790 - Church Garage & Contents	\$10,074.00	
1800 - Church Building	\$5,430,585.00	
1810 - Church Furnishings	\$426,130.00	
1815 - Office Equipment	\$91,458.00	
1816 - Art & Music Collections	\$50,400.00	
1817 - Organ	\$896,000.00	
1820 - Canoes	\$1,200.00	
1825 - Accumulated Depreciation	(\$742,695.00)	

Total Fixed Assets

\$6,263,278.50

Total Assets

\$8,226,555.82

Liabilities, Fund Principal, & Restricted Funds

Liabilities Fixed

Assets

0001 - Represented by Fixed Assets	\$6,263,278.50	
------------------------------------	----------------	--

Total Fixed Assets

\$6,263,278.50

Total Liabilities

\$6,263,278.50

Fund Principal

0002 - Beginning Balance-General Fund	\$1,102.69	
Excess Cash Received	<u>(\$6,744.45)</u>	

Total Fund Principal and Excess Cash Received

(\$5,641.76)

Restricted Funds

Total Temporarily Restricted Total	\$801,183.14	
Permanently Restricted Total	\$1,167,735.94	

Restricted Funds

\$1,968,919.08

Total Liabilities, Fund Principal, & Restricted Funds

\$8,226,555.82