

Glenview Community Church Groundrules and Behavioral Covenant

As caring members of GCC, we accept and agree to abide by the groundrules stated below. Further, we commit to holding each other accountable for behaving in accordance with these groundrules during all our meetings or interactions. We believe that individually, we should endeavor to follow the Golden Rule to " ... Do unto others as you would have others do unto you ... "

I Will:

Focus on issues.

Listen carefully, respectfully consider alternative points of view and stay open to influence and inquiry.

Speak calmly and respectfully in presenting my views or responding to questions.

Think for the benefit of GCC and help the group achieve its objectives through inclusive solutions.

Focus on the future of GCC while respecting our rich history as a church.

Apologize if my words or thoughts were hurtful or perceived as disrespectful.

Speak up if I believe these ground rules are not being followed.

Behave in a manner consistent with the role model that I am to others in the church.

I Will NOT:

Make the issues personal.

Interrupt others or fail to recognize the contributions of others.

Respond angrily to other's comments or fail to seek to understand the other person's perspective first.

Focus on my interests only or think/speak in divisive terms .

Be resistant to new ideas for GCC.

Disregard how others receive my comments.

Ignore behavior I believe is inappropriate.

Speak negatively of others when they are not present or present issues for group discussion in order to punish or embarrass others.

**EXECUTIVE BOARD MINUTES
GLENVIEW COMMUNITY CHURCH
25 January 2011**

- I. **Call to Order:** Vice-Moderator, Bill Dailey, called the meeting to order at 7:05PM in the Mayflower Room. The clerk recorded the roll silently.

Present: Howard Roberts, Pam Keckler, Bill Dailey, Rob Hevey, Beryl Bills, Kara Clark, M-J Detwiler, Bob Kappus, Laura Heyser, Kerry Karth, Scott Lothian, Bob McGee, Debbie Berg, Carolyn Brown, Chris Calandra, Bill Cooper, Blanche Hanson for Glenn Davis, Laura Olson for John Demler, Melinda Krueger, Margaret Lutz, Tom Lutz, Barbara Pollack, Tracy Sawires, Phyllis Scott, Jim Yagelski

Excused: Lloyd Bettis, Constance Filling, Christine Foley

Guests: Larry Kemp, Susan Mann

Bob McGee gave the opening reflection.

- II. **Clergy Comments:** Pam Keckler's and Howard Roberts' complete reports are included in the Executive Board packet dated January 25, 2011.

- Additional comments from Howard focused on the following:
 - Positive results to a year-end request to GCC members to make a pledge or increase their pledge to offset a potential 2011 budget deficit.
 - The Interfaith Service on January 23, 2011 considered a transitional effort from prior years.
 - Howard W. Robert's letter announcing his retirement effective July 1, 2011. (A copy of the letter is attached.) Following some clarification, a motion was made and seconded to accept the letter dated January 23, 2011, noting that the effective date of retirement will be July 31, 2011, to include four weeks, accrued paid vacation. By a show of hands the motion passed with 24 voting in favor of the motion and no votes opposed.
- Pam reflected on her experience the previous Sunday interacting with children in Sunday School and her desire for them to know the ministers and understand the connection between Sunday School and "the big church."

III. **Consent Agenda:**

A. December Executive Board Minutes

B. January reports and minutes from Ministers, Boards, and Others

There were no additions or deletions to the Consent Agenda. The Consent Agenda was adopted as presented.

- IV. **Treasurer's Report:** Rob Hevey, Church Treasurer, reported that for the fiscal year ending December 31, 2010, total revenues were unfavorable to the budget by \$51,417. However, total expenses were favorable to the budget by \$62,616. Expenses were kept under budget in nearly all departments and were aided by a transfer from Friends of Music to cover an overage in Music expenses. The net result is a \$13,209 surplus for 2010 to be added to the General Fund.

V. **Committee Reports:**

A. **Leadership Committee** - Bill Dailey, chair, reported:

- A list of Vice-Moderator nominees has been developed.
- A motion was made, seconded, and passed by those present and voting to approve the nomination of Alison McClaren to the Stewardship Board for the remainder of the 2010-2011 term.

B. **Planning Committee** – Bob McGee, provided Executive Board members a summary of the Operating Committee meeting with Board Chairs, which focused on Planned Board Activities and Events Related to the Long Range Plan Goals in 2010. A copy of the prepared document is available upon request.

VI. Board Reports

A. Stewardship: Margaret Lutz, chair, reported results of the 2011 campaign “*Embrace the Vision, Live the Mission,*” through January 24. At the request of the Stewardship Board, a letter was prepared and sent out in early January, under the signature of Howard W. Roberts, seeking additional funds to support the work of GCC, either through a pledge, if not already completed, or an increase to 2011 pledges already received. As of January 24, pledged income for 2011 is at \$934,034.

<u>Date</u>	<u>Number of Pledges received</u>	<u>Total Dollars Pledged</u>	<u>Increases to Pledges Received Initially</u>
11/1	255	\$577,020	
11/15	305	\$658,300	
12/15	404	\$823,023	
1/24	444	\$870,513	\$ 63,521
1/24	444	\$934,034	

B. Finance Board: Proposed 2011 Budget – Laura Olson with assistance from and Larry Kemp presented the proposed 2011 Budget with a projected surplus of \$27,566. Excluded from the budget were the following expenses, totaling \$75,518:

- 3% raise pool for staff, \$9,081
- 3% raises for ministers, \$6,644
- Music staff realignment and adjustment, \$11,092
- Employee insurance at 80% of GCC contribution, \$28,701
- Capital Reserve annual contribution, \$20,000.

Following discussion, a motion was made and seconded to fund staff raises, minister raises and the music staff salary realignment and adjustment, totaling \$26,817, as a part of the 2011 Budget presented by the Finance Board. With a show of hands, the motion passed with 23 yeas; zero nays; and 2 abstentions.

Subsequently, the following motion was made and seconded: the Executive Board recommends the adoption by the congregation of the 2011 Budget as so proposed. With a show of hands, the motion passed with 24 yeas; zero nays; and 1 abstention. (A copy of the budget is attached.)

C. Membership: Phyllis Scott, chair, updated the Board on plans for “Volunteer Sunday” designed to showcase GCC activities and volunteer opportunities. All Church Boards and other groups (e.g., Men’s group, TOPP, WA, etc.) have been asked to participate in the event scheduled for Sunday, February 27 following the 9:30 worship service.

D. Requests for collections and sales:

- Confirmation and Youth Board
 - PYF “Souper Bowl for Hunger“ collection February 6, 2011
 - PYF Work Camp Stock Sales beginning February 27, 2011

A motion was made, seconded and passed by those present and voting to approve the PYF requests.

- Resale Shop “Open House” February 20, 2011, following the 9:30 worship service. A motion was made, seconded and passed by those present and voting to approve the request.
- Girl Scout cookie sale in early March, with proceeds to be given to the Northfield Food Pantry in memory of Chris Ciccolini. A motion was made, seconded and passed by those present and voting to approve the request.
- Bob McGee offered heartfelt thanks to Beryl Bills in her role as Church Clerk. Beryl thanks the Executive Board, staff and GCC members for their support while serving as Clerk and wishes Bob McGee success as he assumes the responsibility.

VII. Selected Pending Matters

A. Mid-Winter Annual Meeting: A motion was made and seconded to approve the following Meeting Call notice:

MID-WINTER CONGREGATIONAL MEETING

By a vote of the Executive Board, the Mid-Winter Congregational Meeting will be held on Sunday, **February 13, 2011, in the Sanctuary at 10:45 AM or immediately following the service.** The purpose of the meeting will be to receive reports from the Church Clerk, Church Treasurer, and Stewardship Board; receive nominations for Church Treasurer and Church Clerk; and, adopt the 2011 Budget.

This notice constitutes the official call to meeting. All members of the church are urged to be present.

The motion was passed unanimously by all those present and voting.

VIII. Congregational Comments: none

VI. Adjournment - The meeting was adjourned at 8:40 pm with the saying of the Lord's Prayer

Respectfully submitted,
Beryl Bills - Church Clerk

Mid-Winter Annual Meeting: Sunday, February 13, 10:45 AM, Sanctuary

Executive Board Meeting: Tuesday, February 22, 2011, 7:00 PM, Mayflower Room

January 23, 2011

Glenview Community Church
1000 Elm Street
Glenview, IL 60025

Dear Friends:

After serious thought, reflection, and prayer, conversations with our children, and long conversations with Peggy I am announcing my retirement effective July 1, 2011. I began my work as your Senior Minister on January 25, 2002 with great energy and enthusiasm, honored by your confidence and trust in me. The welcome and excitement I experienced as I arrived and began my work with you remains one of the highlights of over forty-five years of pastoral ministry. The encouragement and support that so many of you have given has added joy to my life.

For the last several years conflict has been a part of the life of this congregation. The pattern of this conflict predates our time together. The way we have handled the conflict has diminished the effectiveness of our ministry, caused hurt and pain in many lives, and reflected a divided congregation. As this conflict has affected many of you, it also has taken its toll on me. I have not been as effective, creative, and energetic as your Senior Minister as I wanted to be.

During the remaining time we have together I am open to discussing the dynamics of the life and ministry of Glenview Community Church with you. Avenues for these discussions include the Executive Board Meetings, individual board meetings, individual conversations, an exit interview, and of course, other avenues that you may suggest. I want to contribute to improving the effectiveness of this congregation's ministry.

Since it was at the conclusion of the worship service on November 11, 2001 that you extended a call to me to be your Senior Minister, I am using the format of today's worship service to communicate my plans to retire. I have shared this decision in advance with Reverend Pam Keckler and with Lloyd Bettis, our Moderator.

I am deeply grateful for the opportunity you have given me to serve as your Senior Minister. I appreciate the wonderful support that so many of you have given me. Peggy and I are grateful for the many friendships that have emerged for us as a result of being part of the life of Glenview Community Church. I look forward to celebrating the remaining time that we have together.

Faithfully yours,



Howard W. Roberts
Senior Minister

**MINUTES OF THE MID-WINTER MEETING
THE GLENVIEW COMMUNITY CHURCH, UNITED CHURCH OF CHRIST**

13 February 2011

- I. Having determined that a quorum was present, the meeting was called to order at 10:35 am by Moderator Lloyd Bettis.
- II. The opening prayer was given by Rev. Dr. Howard Roberts.
- III. The Minutes of the Glenview Community Church Annual Meeting of May 25, 2010 were approved as written.
- IV. Beryl Bills presented the 2010 report of the Church Clerk. As of December 31, 2010 total Church membership is recorded at 1,515 members, a net decrease of 20 members from the prior year. Of the 1,515 members, 1,261 are designated active full-time members. A motion to receive the report was made, seconded and approved unanimously by those present and voting.
- V. Rob Hevey gave the report of the Church Treasurer for the year 2010. In summary, actual total revenues for the year were at \$1.099 million, compared to a budget of \$1.151 million. Total revenues were \$51,417 below budget. Actual total expenses at \$1.086 million tracked well to budget in all departments, and were under budget by \$62,616. For the year, revenues exceeded expenses by \$13,209. A motion to receive the report as presented was made, seconded and approved unanimously by those present and voting.
- VI. The report of the Leadership Committee was given by Bill Dailey, Chair, who nominated Bob McGee for Church Clerk and Rob Hevey for Church Treasurer, each for a term of one year. Separate motions to elect each of the nominees as submitted were made and approved unanimously by those present and voting.
- VII. Margaret Lutz, Chair, presented the report of the Stewardship Board. Through January 24, 2011, 444 pledges totaling \$934,034 have been received, with an average pledge of \$2,103 in 2011. Margaret commented on the generosity of GCC members particularly in response to a request for individuals to increase their pledges or to pledge, if they had not already done so, in an effort to cover an anticipated 2011 budget shortfall.

In 2010, the Resource Development Committee (RDC), an ad hoc committee of the Stewardship Board, raised slightly over \$10 thousand dollars for the benefit of GCC and anticipates doing the same in 2011. Additionally, approximately \$8 thousand dollars were raised from the American Girl Fashion Show and distributed to three mission outreach programs plus GCC mission activities.

John Tillman, Vice-chair, presented the 2011 goals of the Resource Development Committee, including a pancake breakfast in April and garage sale in late June. John also commented on the challenges faced by the Stewardship Board as the number of pledging units and GCC membership has “shrunk” over the past few years. John called on GCC members to think forward and take up the challenge to “build our church new again.”
- VIII. John Demler, Finance Board Chair, presented the 2011 Glenview Community Church Budget. A summary of the proposed budget previously approved by the Executive Board was made available both prior to the meeting and at the meeting. As presented, the 2011 Budget is a balanced budget with total revenues of \$1,090,096 exceeding total expenses of \$1,089,347 by \$749. Excluded from the budget are funding of the Capital Reserve Fund

and health insurance benefits for staff members. Following several questions, a motion to adopt the 2011 Budget as proposed by the Finance Board and approved by the Executive Board was moved, seconded and passed unanimously by those present and voting.

- IX.** A motion for adjournment was made, seconded and passed unanimously by those present and voting. The meeting was adjourned at 11:10 am

Respectfully submitted,

Beryl B. Bills

Sunday Service Attendance 2008 - 2010

<u>2009</u>				<u>2010</u>				<u>2011</u>			
8:30/ 9:30	10:30	Total	AVG	8:30/ 9:30	10:30	Total	AVG	8:30/ 9:30	10:30	Total	AVG
Jan.	151		151	101		101		186		186	
	58	212	270	49	230	279		251		251	
	92	235	327	55	223	278		208		208	
	323		323	239		239	Interfaith	244		244	Interfaith
				69	229	298		262		262	
			<u>268</u>					<u>239</u>			<u>230</u>
Feb	86	277	363	53	258	311		170		170	
	111	234	345	65	229	294		333		333	
	98	263	361	73	187	260					
	73	223	296	68	216	284					
			<u>341</u>					<u>287</u>			
Mar	69	238	307	65	231	296					
	47	213	260		223	223					
	74	243	317	69	196	265					
	27	123	150	93	206	299					
			<u>258</u>					<u>270</u>			
Apr	120	270	390	87	Maundy Thursday						
	73	Maundy Thursday		75	Good Friday						
	113	Good Friday		400	602	1002	Easter				
	447	757	1204	56	233	289					
	112	363	475	126	276	402	Musical				
	60	451	511	64	317	381	Confirm				
			<u>645</u>					<u>519</u>			
May	41	423	464	55	177	232	Choir				
	98	377	475	79	400	479	Kids Sing				
	69	118	187	70	160	230					
	99	begin 1	9:30 service	120	217	337					
	194	Youth Sunday		125	- 1 service	125					
			<u>284</u>					<u>281</u>			
Jun	214		214	138		138					
	143		143	106		106					
	127		127	116		116					
	156		156	125		125					
	147		147								
			<u>160</u>					<u>122</u>			

2009**2010****2011**

Mon	8:30/ 9:30	10:30	Total	AVG	9:30	Total	AVG	9:30	Total	AVG
Jul	98		98		116	116				
	136		136		124	124				
	129		132		132	132				
	172		155		235	235				
				<u>131</u>			<u>152</u>			
Aug	121		121							
	101		101		111	111				
	137		137		141	141				
	161		161		134	134				
	130		130		150	150				
				<u>101</u>			<u>134</u>			
Sep	114		114		123	123				
	290		290		307	307 Rally Day				
	53	281	334		237	237				
	82	299	381		238	238				
				<u>238</u>			<u>226</u>			
Oct	92	283	375		189	189				
	59	224	283		290	290				
	153	337	490		220	220				
	60	199	259		204	204				
					242	242				
				<u>352</u>			<u>229</u>			
Nov	76	230	306		267	267				
	53	194	247		279	279				
	111		111		237	237				
	109	243	352		146	146				
	173		173							
				<u>239</u>			<u>232</u>			
Dec	10:30	1:30	4:00		10:30	2:00	Pageant			
	470	236	526	1232	653	440	1093			
	122	236	358		248		248 choir			
	48	226	274		236		236			
	4:30	7:30	11:00		4:30	7:30	11:00			
	593	101	368	1232	563	74	377	1014		
					70		70			
				<u>615</u>			<u>532</u>			

Senior Minister's Report

Executive Board

February 22, 2011

A major event for me this month was having to appear in court. I was summonsed by the Court of Confirmation to answer accusations for "saying and teaching things that seem unreasonable and illogical, teaching about God, Jesus, and everlasting life." I was summonsed to appear on February 6, 2011 and to respond to the following questions:

- 1) What and/or who is God? What is your interpretation of God? Is God all powerful?
- 2) Was Jesus perfect? That is, was he sinless? If he was perfect, why the story of him turning over tables in the synagogue? If he was not perfect, how is it that we all worship him and not other people that are also not perfect?
- 3) Are the Miracles true? Did Jesus really feed so many people with so little bread/fish? Did he really walk on water?
- 4) Were the Old Testament stories true? Did God really kill everyone on the earth during the Flood? Do we have to follow the laws of Leviticus? (One of those laws states that if a child curses his mother or father he should be put to death)
- 5) What is Love? Jesus said to love your enemies, how do you do this, it seems so difficult? How can you love someone if you don't even like them?
- 6) What is Heaven. Who gets to go to Heaven? Do animals get to go?
- 7) Does prayer work? If you pray for something and it doesn't come true, does it mean God didn't hear? Does God have the power to grant prayer requests?
- 8) Why do we go to worship services? Is the church the only place you can worship?
- 9) In the UCC, we say everyone is welcome here. Is this really true? Do we really welcome everyone? What if 100 black homeless men decided to come every Sunday, would we all still welcome them? Do we truly welcome people that are different from us?

What a challenge! By the way I was found guilty by the Court of Confirmation. What a wonderful learning opportunity for me and I hope for the Confirmands. Thanks to Monty Davis and his Confirmation Class for arranging the trial and posing the questions.

These are excellent questions. How would you answer them. I encourage you to take some time and answer them. Are your answers different now than they would have been last year? What about ten years ago? If your answers are different now they earlier, what has led to the change in your thinking?

In addition to presenting a defense, without the advice of legal counsel, in the Court of Confirmation, I had forty-nine appointments, and conducted one baptism and one memorial service since the January meeting. I have had numerous conversations and emails regarding my retirement announcement. I anticipate I will have many more over the course of the remaining time I serve as your Senior Minister.

I will be leading four sessions of Adult Education, March 20th, 27th, April 3rd, and 10th. Using Philip Gulley's book, If the Church Were Christian, I will lead discussions about behavior versus belief, curiosity versus certainty, peace versus power and the needs of people versus the maintenance of institutions.

The Lenten season begins March 9. I'm developing a series of sermons for Lent that focus on the signs or miracles of Jesus and what, if any, relevance they have for us in a post denominational, post Christian world. There are continued opportunities for personal and spiritual growth at Glenview Community Church. I look forward to learning and growing with the Executive Board and the congregation through the months ahead.

Howard W. Roberts

Activities/Reports

- Assisted with worship once
- Led worship and preached one time
- Led worship at Women's retreat – great weekend
- Led Sunday School opening worship
- Helped with Confirmation Chaos
- Met with 7th grade parents who had concerns about their young teens
- Offered communion at PYFF and led Parent Group
- Reminder of memorial service for Gerald Bruce February 26 at 11 a.m.
- Attended several board meetings that were rescheduled after blizzard
- Enjoyed attending 60 plus luncheon
- New Member session
- Book Review for WA Chapter 8
- Preparing for our Lenten programs and worship
- Preparing for confirmation spring sessions

Reflections

The end of this month is the “last hurrah” before Lent sneaks around the corner. Are you ready? We just observed the 7th Sunday after Epiphany, with a couple more weeks before the first Sunday of Lent begins. I don't know about you, but I'm ready for both a new liturgical season *and* calendar season. After that blizzard I am done with snow and cold weather. I'm ready for Lent and I'm ready for spring. And both are promised to us.

What will be different for you this time around? What new thing would you like to have happen to you? Scripture says “Behold I am about to do a new thing; now it springs forth, do you not perceive it? I will make a way in the wilderness and rivers in the desert.” (Isaiah 43:19)

If we want this Lenten season to be new and different, then we need to prepare now. Think about changes and growth in your life yet this month. Then when Ash Wednesday comes around (March 9) you will be ready to begin your spiritual journey or renew the one you're on so far.

To get us started thinking I've included a poem from author Ann Weems on the next page.

Peace and Blessings,

Pam

We All Have Our Courtyards

*We all have our courtyards,
those times and places we face
like Peter
when we must decide
to stand up and say
whether we know him or not.
Those crossroads in our lives,
when we go along with things as they are,
or we say, as Luther did,
Here I stand, I can do no other.
We all have our courtyards...
Lent is the time to prepare
for our courtyards,
the time to listen to who he says he is.
and he did, you know,
He did tell us who he is.
He is that one who brings good news to the poor,
freedom to the oppressed,
sight to the blind...
that Holy One who said,
follow me.
feed my sheep.*

(From Advent's Alleluia to Easter's Morning Light)

Glenview Community Church Adult Education Board Minutes

MEETING DATE/TIME/PLACE: Tuesday, February 8, 2011/ 7:00 pm/ Founders' Room

MEMBERS PRESENT: Marcy Blackwelder, Vicki Buzard, Chris Calandra, Earle Shultz, Mark Brown, Sally Sargent

Members excused: Nick Bubnovich

Visitor: Rev. Keckler

SUMMARY OF MEETING

Discussion Items:

New Business

1. Rev. Keckler stopped by the meeting. There was a discussion about the congregational survey about the time and attendance for worship services. We also discussed the possible revamping and renewing of the church library. Rev. Keckler will contact Tom Amos, as he was previously involved with maintaining it. Several Board members agreed to help in the cleaning and rearranging of the space if there is "expert" advice on how and what to do.
2. There was discussion about our poster and flyers for the "Encouraging Volunteers" Sunday, Feb. 27 in the Mayflower Room during coffee hour—no Adult Ed program that day. Marcy is creating flyers, handouts to be attached to treats, and posters. Vicki will provide balloons. Several of us will put the treats and handouts together before church that day.
3. We will have only 1 returning board member, Mark Brown, and the commitment of Nancy Winton for 2011-13. Tracy Sawires and Linda Doede have expressed interest in joining the Board. After the "all boards" Sunday Feb. 27, Chris will distribute a calling list of potential members for us to contact.
5. Earle suggested a good book, Portals in a Northern Sky by Charles Hayes. It is a novel that combines sci-fi, mystery, and philosophy and he highly recommends it. We also discussed having folks donate their gently used books to the church library.
6. Chris will contact Marilyn Belleau about speaking either May 1 or May 22 about her position as parish nurse and how it has impacted the church.

7. Currently scheduled/planned programming:

February

- 6 Rob Long and healthcare reform—how it affects us all
- 13 No Adult Ed—midwinter congregational meeting
- 20 Nick Bubnovich--"Social Justice: How Relevant is CoSt,"
- 27 "Encouraging Volunteers" All Boards present in Mayflower Room—No Adult Ed

March:

- 6 Rev. Keckler—topic TBA
- 13 Todd Price and Steve Sargent talk about from Wagner Farm
- 20 Dr. Roberts' Lenten series based on the book by Philip Gulley: If the Church Were Christian
- 27 Lenten Series

April:

- 3 Lenten Series
- 10 Lenten Series
- 17
- 24 Easter Sunday—No Adult Education

May:

- 1
- 8 Mother's Day—No Adult Education
- 15 Sally Sargent, Jason Ornduff and Per Hanson presenting information on the upcoming changes to the Power of Attorney laws in Illinois as well as the potential changes to the federal inheritance tax laws
- 22
- 29 Memorial Day Weekend –No Adult Education

7. Suggestions for potential speakers include:

- A police officer or “officer friendly” to discuss safety in Glenview and in our homes
- Gary/Andy on a topic of interest to “music folks” and others
- A representative from the Greek Orthodox church to discuss it and possibly take a group on a tour of the facility

MINUTES SUBMITTED ON: Wednesday, February 9, 2011 by Chris Calandra

NEXT BOARD MEETING SCHEDULED: Tuesday, March 8, 2011 at 7 pm in the Founders' Room.

Fellowship Board
Minutes from
February 13, 2011 Meeting

Members Present: Diane Christenson, Karen Christenson, Ann Grant, Melinda Krueger, Steve Krueger, Brad Smith, and CJ Sultz

St. Patrick's Potluck Dinner

- Reviewed outline of remaining tasks
- Accepted volunteers to complete each task
Established action plan for day of the dinner

Volunteer Sunday

- Phyllis Scott presented plans for Volunteer Sunday
- Fellowship Board agreed to assist with the event

Dinner for 8

- CJ Sultz presented strategy for organizing and initiating dinners
- Agreed to adopt event name: Break Bread Together
- Final plans and actions to be determined at March meeting

**Glenview Community Church
Finance Board Meeting Minutes
13 February 2011**

Present: John Demler, Marlene Baddeloo, Jane Hund, Bill Hinkle, Rob Hevey, and
Larry Kemp
Excused: Scott Barnes, Dick Gottfred, and Laura Olson

The meeting was called to order at 11:15 a.m. in room 210.

Larry Kemp gave the opening Prayer.

A motion to approve the January 2011 minutes was made by Marlene and seconded by Rob. The motion passed without objection.

TREASURER'S REPORT

Rob reported that revenues are on track after one month. Pre-paid pledges are slightly down from 2010 but revenues are slightly up from 2010. A discussion on how pre-paid pledges are recorded took place. All pre-paid pledges are booked in January as opposed to spread out over the calendar year—a practice that moves us closer to a “cash basis”. This methodology has been employed for several years now.

EXECUTIVE BOARD REPORT

John turned to Larry, with the aid of Rob, to report since John was out of town for the January meeting. Substance of the report centered on the adoption of the budget.

An extended discussion on insurance for the staff was carried over from the Mid-Winter meeting comments. John asked that determining a way for the church to fund this item become the top priority of the Finance Board for 2011. Larry reminded everyone we were at a deficit forecast position just 14 days prior to January EB meeting and only started to roll into a positive forecast about 6 days prior.

COMMITTEE REPORTS

- **INVESTMENT**

With Scott and Dick both excused, John gave an informal update based on an email exchange with Dick. Endowment I is flat based on the bond market. Housing is slightly favorable. Funds for Endowment II are at William Blair. Dick is requesting a longer, detailed discussion of investments to take place at the March meeting. Rob pointed out that

we have cash sitting at Glenview State Bank and we need to make decisions about that as well. Rob will be in contact with Dick.

- **LEADERSHIP**

John pointed out, with his monthly regularity, that the Finance Board still does not have a Vice Chair. John also asked that we all talk to the members to see if they have any interest in serving on the Finance Board (or any board) for 2011.

- **BUDGET**

John alerted the board to be mindful about the impact of Howard's announcement of retirement on revenue. Discussion took place about what additional impact might be required for the potential of a interim minister and possible timing on the funding of a Senior Minister Search Committee. Since there are external decisions to be made, the discussion was speculative.

- **NURSERY SCHOOL**

No report.

- **STEWARDSHIP**

No report.

- **AUDIT**

No report.

- **PMRC**

No report.

OLD BUSINESS

None.

NEW BUSINESS

Rob said that he would work with Dale to update various salary lines in the 2011 approved budget document once Howard and PMRC have determined the various allocations. Rob believed that will be done before the next Finance Board meeting.

Business adjourned at 12:10 p.m. and the meeting closed with the Lord's Prayer.

Respectfully submitted by LB Kemp.

GLENVIEW COMMUNITY CHURCH BOARD MINUTES

Membership Board

February 15, 2011 at 7:00 pm in the Parlor

MEMBERS PRESENT: Phyllis Scott, Diane Carroccia, DeAnne Frank, Sue Hoffmann, Margaret Ludemann, Doug Morgan, Fran Oldham, Dio Vega

MEMBERS EXCUSED: Mike Lauesen, Jill Ruter

SUMMARY OF MEETING

Board Business

- Minutes for January were approved.

Executive Board Report

- January meeting minutes available on line at
 - www.gccucc.org/resourcepdf/ExBoardJan2011.pdf
- Considerable amount of time spent discussing 2011 GCC budget
 - Three expenditures approved
 - 3% raise for staff
 - Salary realignment for Andy Lewis and Gary Wendt
 - 3% raise for ministers
- Moving forward from Howard's retirement discussed after formal meeting

Leadership Board Meeting

- List of people considered for Vice Moderator has been narrowed down
- Discussion regarding Howard's retirement
 - The hiring of an interim minister

New Business

- **Tour of Church February 20** – cancelled since the tour guide, Jill, will be out of town
- **New Member Orientation Class February 13**
 - Phyllis attended as the representative of the Membership Board
 - Gave a terrific and heartfelt description of what our board does
 - She enjoyed the warm, inclusive and casual atmosphere exuded throughout the class and felt Howard did a very nice job
 - Thank you, Phyllis, for taking even more time out of your busy schedule to represent our board and for putting both the board and church in such a nice light!
 - We gained seven new members—3 young couples with children and a single women (who has already joined a Women's Association chapter!)
 - Follow-up calls made to visitor to see if they were interested in attending this orientation class – Diane, DeAnne, Fran
 - Difficulty finding phone numbers
 - Lack of information about the class on the GCC Website
 - The calls did not incur any additional attendees
- **New Member Sunday, February 20**
 - Prior to worship, Phyllis will take pictures of the new members and their families
 - Phyllis will sit with the new members during worship

- **Volunteer Sunday February 27** - All board members needed that day!
 - **Preparation PRIOR to event**
 - *Announcements* in Broadcaster and Bulletins – Completed – **Phyllis**
 - *Message from the Pulpit* – February 20 Worship Service – **Doug**
 - *Floor Plan* of room set-up for event – **Dio**
 - Poster board size to set on easel in center of room
 - 8 ½" x 11" size for Phyllis to give to Facilities Manager
 - *Mayflower Room Set-up Plan* – **Phyllis**
 - Each group will have the use of half of a long table
 - Discuss with Facilities Manager, Jen
 - Give copy of room set-up floor plan (from Dio)
 - Additional instructions:
 - ✧ Chairs set up along east side of room or in Founders' Room for those who have difficulty standing
 - ✧ Several trash cans needed
 - *Membership Board Sign and Table* – **Sue and Jill**
 - Decorate foam core board (get from Phyllis) with information about board
 - Table Items (bring day of event) – Advent Card-Fran, New Member Packet, Red Visitor Ribbon, Directory, Bread-DeAnne
 - *Raffle*
 - Items – **All members can contribute**
 - Continue collecting items and bring to Mayflower Room on day of event
 - Large Basket to hold items – **Phyllis**
 - Tickets (2 piece) – **Doug**
 - Ask Sally Thuresson for left-overs; if none, let Margaret know she will need to purchase at Card & Party Giant
 - *Decorations* – **Margaret**
 - Card & Party Giant – Saturday open until 6 pm
 - 1015 Waukegan Rd, Glenview - (847) 657-7770
 - *Balloons*
 - 2 Dozen, bright, jewel tones
 - Helium + High Loft
 - \$15.00 per dozen
 - *Plastic Table Cloths* - \$1.75 each – 4' x 8'
 - 2 hot pink + 12 more in bright, jewel tones
 - *Plastic Leis* for Membership Board to wear during event
 - *Tickets* - Possibly a roll of 2-piece tickets – check with Doug
 - *V-Form Collection Basket* – Margaret (sign to be made by DeAnne)
 - *Food* – Sue and Fran
 - 3 Costco Cakes
 - Plates, Forks & Napkins
 - *Table Signs* – DeAnne
 - White Card Stock folded in half, length-wise
 - Printed with the name of each participating group (get names from Phyllis)
 - *Volunteer Form* – DeAnne
 - Copy onto colored paper and fold
 - Put into worship bulletin
 - Bring extras to Mayflower Room on day of event
 - **Preparation DAY OF EVENT – Sunday, February 27**

- ***Membership Board*** - Arrive no later than 8:30 am
 - Table cloths and balloons on tables
 - Set up easels at tables
 - Set up Membership table
 - Set up table in middle of room
 - Easel with floor plan
 - Basket/sign to collect forms
 - Additional forms and pencils
 - Cut up Cake and put on plates
 - Check microphone
 - Set up table near mic to hold prize basket
 - Raffle gifts into basket
- ***Fellowship Board Members***
 - Make coffee and lemonade
 - Keep additional supply of beverages on stage
 - 2 members come to Mayflower Room at 8:45 to help out
 - 2 Members to hand out raffle tickets at entrance to Mayflower Room
 - After worship service, please man the 2 visitor's tables in the narthex and west entrance– thank you!
- **Event** – **IMMEDIATELY following worship**
 - ***Entrance of Mayflower Room*** – 2 Fellowship Board Members
 - Hand out raffle tickets
 - ***Welcome*** announcement and explanation – Phyllis or Jill
 - ***Volunteer Sunday Song*** – parody by Phyllis Scott and sung by the Surprise Guest and back-up singers!
 - ***Raffle Drawing*** – Mike and Diane
 - ***Volunteer Sunday Song*** – One More Time!
 - ***Membership Board Table*** – Margaret and DeAnne
 - ***Table in center of room*** – Doug
 - ***Food & Beverage Table*** – Sue and Fran + 2 Fellowship Board members
 - ***Thank You for coming!*** – Phyllis or Jill
- **Event Follow-Up**
 - Form Collection baskets in narthex and office
 - Responses will be recorded on an Excel spreadsheet and distributed to each board or committee – DeAnne
 - Depending on number of responses, a reminder in the Broadcaster or Bulletin may be needed

Meeting adjourned at 8:45 pm with the Lord's Prayer

NEXT BOARD MEETING: March 13, 2011 at 10:45 am in the Parlor

Minutes Submitted On: February 17, 2011 by DeAnne Frank

Glenview Community Church
Missions Outreach Board Minutes
January 27, 2011

Opening

Present: Nancy Mullarkey, Cathy Shapiro, Tom Lutz, Bill Ryan, George Silca, Tracy Sawires, Kris Voelker, Greg Eggleston, Tania McCarthy.

Excused: Mark Lefens, Nan Conser

Volunteer Open House 2/27 after worship service – Nancy – computer display; Bill, Kris, Tania – volunteer opportunity sign ups; Tania and Kris – bagged cookies; Kris and Tracy - display board

Resale Shop Open House 2/20 after worship service – stop in and learn about the shop/benevolent giving/community outreach, etc...

PYF idea – still in research stage and Elizabeth will contact us with details.

February 26 - Community Renewal Society workshop – 8:30am-1:30pm.

Refugee family – family from Somalia (parents, 8 yr girl, 14 yr. boy)-school supplies and clothes , family from Burma (parents, 2 year old son) overall apartment set up and future contact, family from Somalia (parents, 13, 15, 17 yr. boys)-apartment set up.

Rebuilding Together – Kris and Greg will coordinate – GCC publications/sign up, Men’s Ministry contact

2011 Grant spreadsheet update

GCC Missions Outreach projects

A Just Harvest (frmly GNCK) -- 2x per month meal prep/service (1st Sun, 3rd Wed each month)

Food on the 1st -- non-perishable food collection on 1st Sunday of each month

Meals on Wheels – 2x per month from Sept-June

Sunday school outreach projects

CROP Hunger Walk – Glenbrook October 17, 2011. GCC Confirmation October 24, 2011

PYF made and served dinner on The Night Ministry bus

Halloween Candy collection for distribution at A Just Harvest

RefugeeOne -- refugee apartment set up by GCC (helped 3 families total)

6,7,8 and PYF outreach projects (3x)

Toys for Tots Concert – December 18, 2010

Bake Sale in Support of Toys for Tots – 8th grade

Greater Chicago Food Depository – January 29, 2011

Souper Bowl Collection – PYF – February 6, 2011

Pasta Luigi – February 13, 2011

CRS workshop- February 26, 2011

MOB at Volunteer Open House-February 27, 2011

Rebuilding Together – April 30, 2011

February 7, 2011

NAME OF BOARD: Music

ATTENDANCE: Barry Nelson, Gary Wendt, Dick Conser, Mickey Safstrom, Jennifer Burrowes, and Ed Detwiler. Excused: Bill Cooper, Nancy Dehmlow, Debby Shellard, Andy Lewis, and Michael McGuire.

The meeting was called to order by Vice-Chairperson, Barry Nelson, at 7:08 p.m. with a short prayer offered by Barry.

The minutes of the January 12, 2011 meeting were approved as read.

Executive Board Report – was reviewed by The Board.

Pasta Luigi – Chairperson for this event, Dick Conser, brought The Board up-to-date on the plans for next Sunday's event. Quite a few tickets were sold at the coffee hour on Feb. 6. Tickets will also be available at the coffee hour on Feb. 13. When purchased ahead of time, tickets are \$10 for adults and \$5 for children. When tickets are purchased at the door, the price for adults will be \$12. Tables will be served by choir members and by young people from among our youth. Dick will shop for the non-food items required for the dinner and Trish has agreed to shop for the food items. Dessert will be provided by choir members.

Staff Reports

Gary Wendt – reported that on Sun., Jan. 23, when church members were invited to come forward after the service to try ringing the bells, there was a good response. From this “open house” event it appears that there are 5-7 new people interested in learning the skills required to become a bell ringer. He plans to initiate a “beginners” bell group in March. This group will be scheduled to practice on Thursdays before the Chancel Choir rehearsal which is at 7:30 p.m. There will be additional publicity about the initiation of this group put in The Broadcaster and the Sunday worship bulletin.

A summer concert series is set to begin this summer. There will be three concerts – one each month. At present the schedule calls for the Sing to Live Choir in June, concert pianist from Northbrook in July (proceeds to go to Hands of Peace), and Kevin Kiser Quintet in August.

The May 1 *Organ Walk* will include three Glenview churches: The New Church, Holy Trinity Lutheran, and Glenview Community Church. This is part of the Simple Gifts series.

Andy Lewis – absent

Debby Shellard – absent

Simple Gifts Concert Series

The next concert is scheduled for March 4, 2011. It features **Bella Voce & The Callipygian Players**. The concert begins at 7:30 p.m. here at GCC. *Bella Voce* is Chicago's premier chamber choir, and *The Callipygian Players* are a stylish period instrument ensemble.

In order to be ready for this concert, a set-up crew will be needed for Sunday, Feb. 27, after the worship service. Another crew will be needed to tear down the set-up following the concert, probably on Sat., March 5. Ed Detwiler is the contact person for set-up and tear-down.

Volunteer Sunday, February 27, 2011 – No report because Nancy Dehmlow was absent

Financial Report – no report because Ray Scott was absent. A discussion of funding for robe replacement was postponed until the March 7, 2011 meeting of The Board.

New Business

We were asked to think about who might be willing to serve on the Music Board beginning in June, 2011. It was suggested that on Volunteer Sunday, Feb. 27, 2011 there might be some way to promote our area of service in the church not just by becoming a member of one of the musical organizations but also by serving on The Board.

Board members were reminded that there is Congregational Meeting to conduct church business on February 13, 2011 following worship at 10:45 a.m.

The Music Board will host the coffee hour on February 20, 2011. Michael McGuire, Nancy Dehmlow, and Dick Conser have volunteered to fill this obligation.

The meeting was adjourned at 8:20 p.m. with The Lord's Prayer.

NEXT MEETING: Monday, March 7, 2011 in Room 201 at 7 p.m.

Minutes submitted on Tuesday, February 08, 2011 by Mickey Safstrom.

GLENVIEW COMMUNITY CHURCH BOARD MINUTES

E-Mail to – gccucc@gccucc.org

DUE: 9:00 a.m. Wednesday before the next Executive Board Meeting

NAME OF BOARD: Pastoral Care Board

MEETING DATE/TIME/PLACE: February 8, 2011, 7:00 p.m. GCC, the Chapel

MEMBERS PRESENT: Mary-Lou Aagaard, Karen Aeschlimann, Toni Cucco, Sally Hicks, Mary Ellen Johnson, Carolyn Keller, Betsy Martin, Barbara Pollak, and Sylvia Studt

MEMBERS EXCUSED: Marilyn Belleau, Ann Deakyne, Barbara Gundrum, and Kathy Riddell

MEMBERS ABSENT: Val Anderson,

DEVOTIONS: Mary Ellen Johnson shared portions of a sermon written by minister father.

SUMMARY OF MEETING:

Minutes of the January Meeting: Carolyn Keller asked that the minutes be corrected to show that she had estimated that 200, not 300, persons had attended the memorial service and reception for Chris Ciccolini on January 8th. The minutes were approved as corrected.

Old Business:

Sixty + Luncheons: The January 18th luncheon offered a presentation on Healing Touch by Susan Johnson, who is in the process of becoming certified in Healing Touch. Unfortunately there was a failure with the power point presentation and the attendance was low due to the poor weather conditions.

In Val Anderson's absence, Barbara Pollak asked for volunteers to help with the February 15th luncheon. Carolyn Keller, Sally Hicks and Mary Ellen Johnson agreed to help. This will be the annual observance of Valentine's Day. Those attending are urged to wear red.

Altar Flower Delivery: Betsy Martin reviewed the schedule for delivering altar flowers through the end of March. A few dates were exchanged. Members were reminded to let Betsy know if they can not deliver the flowers.

Blood Drive: Sally Hicks reported that 25 persons signed up to give blood on January 23 and twenty were able to donate. Life Source was pleased with the results. It was the sense of the board that holding the drive in the fall brings more donors and we should try to schedule future drives at that time.

New Business:

Volunteer Sunday: Barbara Pollak asked for suggestions as to what the Board should include in the PCB's educational display on Volunteer Sunday, February 27. It was agreed to set up a poster board listing our activities, with pictures from Sixty+ luncheons. We will place some lilies, poinsettias, and altar flowers on the table and offer cookies because that's what we do at memorial receptions. Betsy Martin, Toni Cucco, Kathy Riddell, Carolyn Keller, and Mary-Lou Aagaard agreed to bake cookies. Toni and Mary-Lou also volunteered to do the hosting.

Health Screening: Barbara reported that Marilyn Belleau is preparing an article for *the Broadcaster* about the Health Screening planned for Sunday, March 13. Sign-ups will take place on March 6.

Executive Board Report: Barbara Pollak gave the following highlights from the last Executive Board meeting:

1. There has been very good response to letters that had been sent asking members to make or increase their pledges.

2. With Howard's decision to retire this year, it is expected that we will have an interim minister for as long as a year.

3. A Search Committee will be created. The moderators will meet with Howard to plan for the future steps.

4. It was announced that the Resale shop will hold an open house on February 20.

Following the Lord's Prayer, the meeting was adjourned.

Next Board Meeting scheduled for Tuesday, March 8, 2011, 7:00 p.m., Room 210, GCC or the chapel. Board members will be advised of the correct location.

Devotions: Carolyn Keller

Minutes submitted on February 15, 2011 by Mary-Lou Aagaard

**GLENVIEW COMMUNITY CHURCH BOARD MINUTES
SERVICES & SACRAMENTS**

MEETING DATE/TIME/PLACE: Monday, February 8, 2011 at 7 p.m. in Room 213

MEMBERS PRESENT: Carolyn Brown, Steve Lindell, Mary Anne Peruchini, Carlton Olson, Bob Richter, Julie Tillman

MEMBERS EXCUSED: Cathy Ach, Dave Aki

MEMBERS ABSENT: Pam Asplund, Janice Lane, Colleen MacKimm, John Roth

AD HOC MEMBERS PRESENT:

Opening Prayer

Minutes for the December 12th meeting were reviewed and approved (no meeting in January due to sickness and conflicts)

- **Report from our Senior Minister, Howard Roberts**
 - Howard Roberts mentioned that Pam Asplund has requested that we try to mix up serving communion by intinction with serving by trays. This request is being reviewed.
 - The next communion will be 3-6-11 by trays. Carlton Olson will prepare the bread. Mary Anne Peruchini will be out of town so Steve Lindell has offered to prep the juice and set up the altar. The Confirmation Board will be helping with communion and Carolyn Brown will confirm how many board members have committed. Carolyn Brown will then communicate how many additional volunteers will be needed. Cathy Ach, Carolyn Brown, Carlton Olson (as a back up) and Bob Richter (who is a maybe) have already volunteered.
 - Ash Wednesday is 3/9 and Howard Roberts and Pam Keckler will do the preparations. A total of 3 volunteers will be needed from 6-9am. Steve Lindell has volunteered to help from 6-9. Two additional people will be needed from 7-8:30 am. Stewardship Board will provide the hot cross buns as in the past.
- **Executive Board Report**
 - Carolyn Brown reported that the budget passed with the congregation.
 - Additional pledges are up by \$64,000 due to sending out letters.
 - Volunteer Sunday will be 2-27.
- **Lector Report – No lector report.**
- **Usher Report – No usher report.**

**GLENVIEW COMMUNITY CHURCH BOARD MINUTES
SERVICES & SACRAMENTS**

- **New Business**

- Volunteer Sunday is February 27th. Carolyn presented ideas for a slogan which will be used on a poster to attract people to our table and the board agreed upon “Come Break Bread With Us!”
- Cathy Ach has offered to help as well as Julie Tillman. One more volunteer needed to help man the table that day.
- Coffee hour will be May 15th.

Closing Prayer

Meeting was adjourned by 7:45 pm.

Next Services & Sacraments Board Meeting: Tuesday, March 8, 2011 at 7p.m. in Room 213.

Respectfully submitted,
Julie Tillman

STEWARSHIP BOARD MEETING MINUTES FOR FEBRUARY 8, 2011

Glenview Community Church Room 7

Present: Scott Brady, Larry Chandler, Cindy Dailey, Scott Frerichs, Gretchen Grad, Margaret Lutz, Karen Patterson O'Brien, Jackie Seter, Sally Thuresson, John Tillman and guest Rev. Howard Roberts

I. Devotion took place

II. New member, Alison McClaren, was unable to attend our meeting. We will welcome her at our next meeting.

III. Howard Roberts:

a. Letters to donors: keep it concise and continue to encourage to pledge. Must keep educating our members why pledge v. donation is critical to health of our budget.

b. Our board has worked very hard and thank you.

Resources are here among members of GCC. When Howard was new to the area, he did a study on average household income of Glenview residents. If 2-3% of household income went to the church, it would mean 3 to 4 million dollars per year.

c. Keep focus on our mission: communicate the message about stewardship – not fundraising. Emphasize giving and managing. Keep the book "Creating Congregations of Generous People" in mind.

d. Letters from members: handed out examples of what members are saying, with permission from those who wrote to him.

e. An exchange of ideas from Howard and questions by the Stewardship Board had regarding the impact of his retirement on the church going forward culminated in the Stewardship Board preparing a statement to be presented to the Executive Board. SEE ATTACHED Letter to the Executive Board

Discussion among board concluded:

How do we react to the negative and bad behavior within our church? SEE ATTACHED Letter to the Executive Board

GCC has a "club" mentality, which has to go. Church mentality needs to grow and not treat the minister as a visitor or hired hand.

Howard heard more than once from members: "Ministers come and go, but members are here to stay".

We will be dealing with a smaller church now: it will either implode resulting with fewer members, or folks will leave if health of church is not improved.

Board concluded that our focus needs to be on members' obligations to the church and to the minister, instead of what the minister has to do for the members.

IV. Resource Development Committee Report: need meeting to plan next pancake breakfast. Sally Thuresson will chair. Likely try for April 17, 2011 (Palm Sunday).

V. Leadership Report: need another member to join our board. Keep trying to think of someone suitable.

Mid-winter meeting this Sunday following service. Margaret prepared handout we reviewed and she will present same on Sunday.

Average pledge value is going up. Problem is less members are pledging.

Need to be warm, welcoming, positive church and not an exclusive club.

Question: what is different in line item "church school": in 2003 & 2004 amount collected was approx. \$2500.00. In 2010 it was less than \$200.00. Need to know if this is real difference in amounts collected or just a different way of reporting.

VI. "My Faith, My Church" program: schedule is set and in good shape. Contributors are doing wonderful job.

VII. Thank You Letters to those who donate:

VIII. Pledge update from Dale Wittenberg: (two sections taken together)

Thank you letters went out to all those who made donations to GCC during 2010. We wish to improve the Stewardship Board tracking of pledges and donations and respond appropriately with Thank You letters in a timely manner. Additional research and discussion is to take place at our next Stewardship Board Meeting.

IX. Mid Winter Meeting Materials (see V. above)

X. Membership Committee: Volunteers February 27, 2011.

Cindy Dailey, Jackie Seter and John Tillman have agreed to man the table.

Gretchen will pop over as well from Hands of Peace table.

Use old Stewardship Boards and make new ones showing pancake breakfast photos and rummage sale photos. Sally Thuresson will take care of making new boards.

Idea is to promote activities of our board and peak interest in joining.

XI. Additional Items:

Gretchen Grad handed out Hands of Peace invites and encouraged all to attend on April 16, 211. Dancing with the Stars gala; lots of fun.

Jackie Seter to lead devotion next month.

Discussed unsung things Howard has done for members of GCC and non-members for which he never gets credit.

Sally Thuresson presented an article from an alumni university magazine "101 reasons to give" as thoughts for future themes for our board.

Cindy Daley pointed out that RDC was supposed to be an ad-hoc committee, and not just made up of Stewardship board members. She is correct and we need to recruit more non-Stewardship members for committee.

Discussed how GCC can move away and/or change the current culture of the church. It took 30 years to get where we are today and it won't change overnight. Must not have an "us v. them" attitude. Challenge bad behavior, lead by example, help pick up the one who falls down with bad behavior, change the way we operate. Sounds a lot like what Jesus may have preached when he was live.... HmMMM.

Adjourned at 8:50 p.m. after saying the Lord's Prayer. Respectfully submitted by substitute secretary, Karen Patterson O'Brien

To: The Executive Board of GCC

All of us at GCC find ourselves facing a pivotal time in our church history. The transition between senior ministers always presents a time of change and opportunity, but this time is different. There is far more atfoot than just a senior minister's departure. We are at a juncture when we need to decide who we truly are as a church before we can move forward. Will the leadership rise to the challenge and help GCC begin a new phase where we can achieve our vast potential, or will we stick to "business as usual" and miss a golden opportunity?

While we are a congregation that has pockets of excellence (inspiring music, outstanding programs for youth, meaningful mission work, to name a few) we are a divided congregation. We need look no further than the tumultuous events of the past 15 months to see the schisms. While budget cuts and minister departures are a fact of many church lives, it is the extreme divergent reactions of many in the congregation that show we are not at present a body united in Christ. Factions, cliques and the inability to share disparate viewpoints in a loving and respectful way are sapping our energy and our potential. We can quantify the cost in the numbers of valued, contributing members who have left our ranks as a direct result of this environment of simmering dissension. What is harder to quantify is the vast number of potential new members who are NOT coming through our doors because they hear the whispers of "trouble" at GCC.

It will be tempting to think that when we find the next minister, the "right" minister, these troubles will end. Well they won't. Only when we do the hard work to BE the right congregation will we find a minister who can guide us to unleash our tremendous potential. Each and every one of us, regardless of past allegiances, must open our hearts and minds to find our unified path forward.

At service on Feb. 13 part of the call to worship we recited included the phrase "May God lead us further in the path of costly love." Loving something dearly often comes at a cost. For us now it means being willing to put ego aside, admit we have a problem and seek the help we need to overcome it. We need to overcome the urge to act as though this is "my" church and begin to conduct ourselves according to another's will, to His will.

Stewardship Board strongly recommends the Executive Board consider two steps to move us along this path. First, seek an outside body skilled in working with congregations in turmoil to guide us on the path to healing. Second, seek an interim minister who will take the helm while we navigate this path. Then when we are truly ready to be the church that God calls us to be, we will find a new senior minister whom we can honor and who will lead us to be not just a church with pockets of excellence, but an excellent, healthy, vibrant church.

Submitted on behalf of the Stewardship Board
Scott Brady, Steve Brown, Cindy Dailey, Scott Frerichs, Gretchen Grad, Alison McClaren,
Karen Patterson O'Brien, Jackie Seter, Sally Thuresson, John Tillman – Vice Chair and
Margaret Lutz – Chair.

February 22, 2011

GLENVIEW COMMUNITY CHURCH BOARD MINUTES

Women's Association

January 18, 2011

MEMBERS PRESENT: 13
MEMBERS EXCUSED: 1
MEMBERS ABSENT: 4

SUMMARY OF MEETING:

President Tracy Sawires began the meeting with an update on the refugee family that GCC, working with RefugeeOne, helped furnish an apartment for. The family is arriving tonight from Burma, and consists of husband, wife, and a two year old son. They will live in a building that houses another family from the same region. Anyone who is interested in being a part of the on-going relationship that GCC will have with this family should talk to Tracy or Kris Voelker.

Vice President's Report - Margaret Ludemann continues to attend the GCC Leadership meetings as the Women's Association representative.

Treasurer's Report - Joan Streibel reported that we are in a good financial position to continue our outreach ministry.

New Business: GCC Special Gift – Following discussion of the budget deficit issue, the Board voted to give a special gift of \$2,500 to the general fund of the church (in addition to \$10,000 pledge).

Resale Shop - Business continues to be good. The shop is in need of additional volunteers on Friday, particularly those who can do some of the more physical things that are needed. Please contact Barbara Thewis or Nancy Winans at 847 724-2638 if you can help. The shop is hoping to have its website up and running by the end of February.

Social Service Committee - The Social Service Committee's recommendations for benevolent giving were unanimously approved. They included a gift to *Hands at Work*, an organization in Zambia that cares for children who have lost their parents to AIDS. Many have AIDS themselves. Fifteen dollars provides food, clothing, shelter and education for a child for an entire month.

Membership - Membership Chairman DeAnne Frank discussed plans for our participation in the Volunteer Open House that will be held during coffee hour on February 27th. Stephanie Whisler will make the display board, and Addy Ford and Joan Streibel will host the Women's Association table.

FEDS - The FEDS Committee is in the process of obtaining quotes for replacement of the church's flannel-backed tablecloths. The committee will make recommendations of additional projects to use the remainder of its budget later this year.

Meals on Wheels – As the North Side Housing and Supportive Services emergency overnight shelter has closed, Meals on Wheels is exploring new organizations to take our food. Last Monday's meal was taken to "Stand Up for Kids," an organization that meets twice a week with homeless/street kids at the North Side location. Next week's food will be taken to the Youth Campus in Park Ridge, a

residential treatment facility for teenaged girls who are wards of the state. Anyone with ideas about organizations that could use our help should contact Emily Davis or Dori Hirsch.

Friendship – Please let Barbara Pollak know of anyone who could use a note of comfort and cheer.

Garden Committee/Chapter 1 – The Garden Committee has determined that the delivery date for the spring plant sale will be May 14th. Anyone who would like to help take care of the church's plants this year should contact Chapter 1.

Prayer Shawl Ministry - The Prayer Shawl Ministry meets at 1 p.m. today in Room 5. Participants were asked to bring any handmade items they would like to give to a women's shelter where the Solid Rock Carpenters just did some renovations. Next meeting date will be March 1st at 1 p.m. Please contact Nan Hinchsliff for further information. Anyone who knits or crochets, or wants to learn how to, is welcome.

Bridge Marathon - The Bridge Marathon is underway with 24 participants this year. Participants play once a month, and will finish with a luncheon in May.

Village Treasure House - Sales have been very good at the Village Treasure House, with November 2010 sales being the highest ever. Kathy Tomita is the new Board president.

Chapters reported on their recent and upcoming activities, which included tours of the new library and of the Glenview/Northbrook Youth Services facility, sponsoring families and wrapping gifts for Youth Services' holiday helper program, volunteering at the Northfield Township Food Pantry, planning for GCC Quiz Night and the Easter Egg Hunt, yoga in the parlor, movie nights and book reviews.

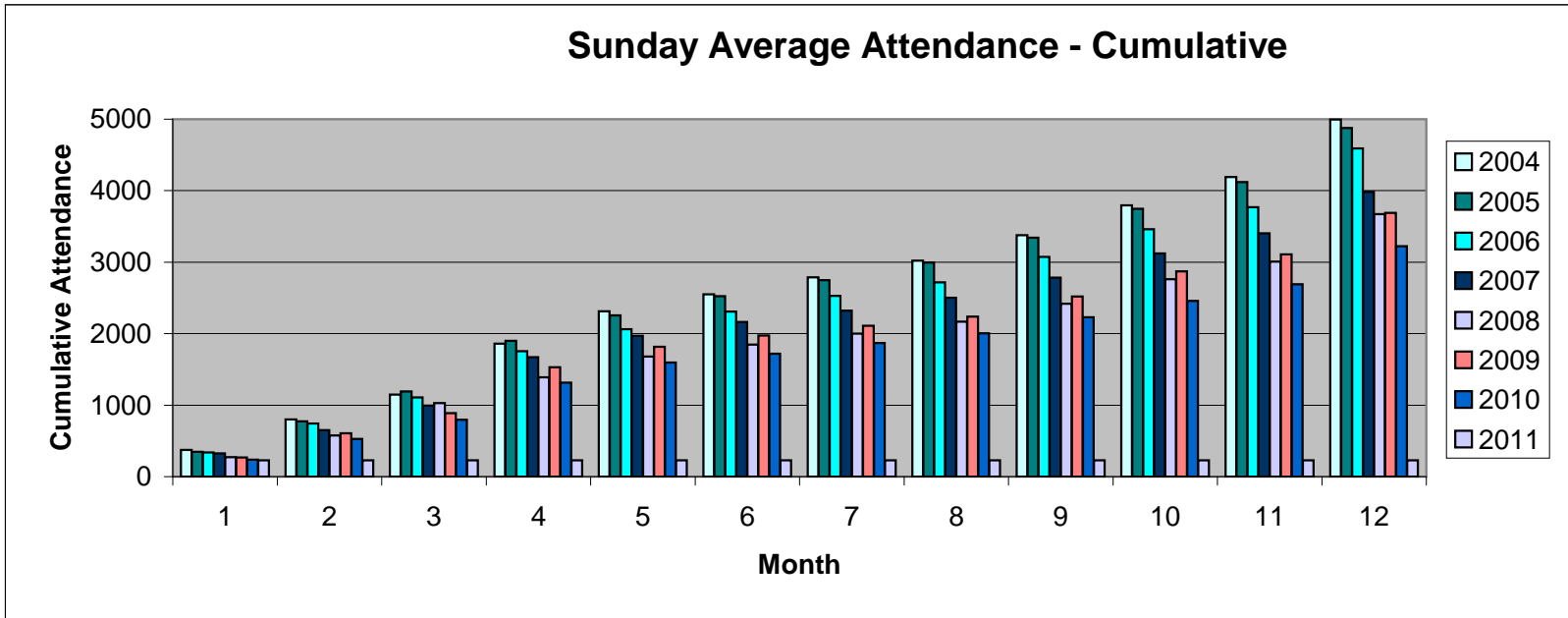
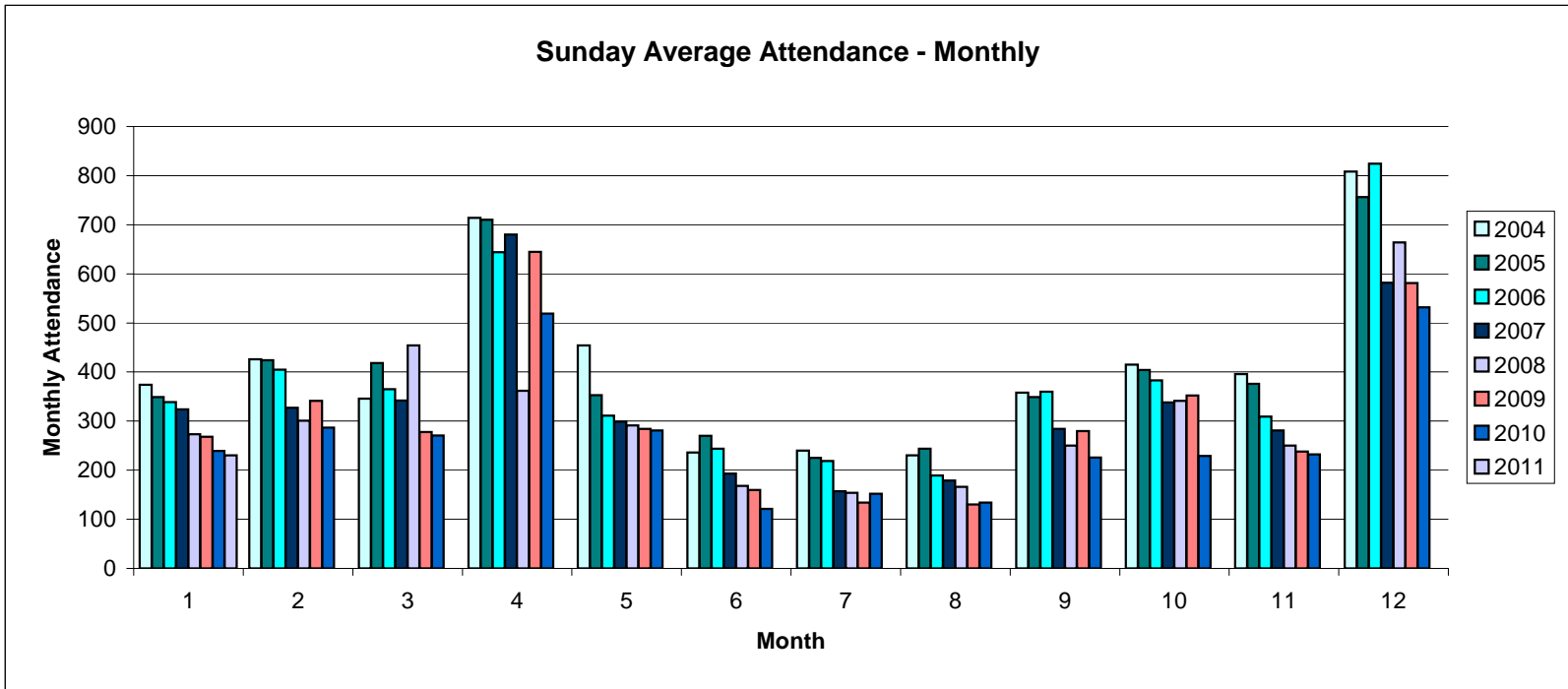
Meeting adjourned at 11:05 a.m. with the Lord's Prayer.

Respectfully submitted on January 21, 2011 by Kathryn Hall

Next meeting: Tuesday, March 15th @ 7 p.m. in the Parlor

**Glenview Community Church
YTD Revenue Expense Summary**

	Jan-11	YTD	YTD	YTD Over/(Under)	Notes
	Actual	Actual	Budget	Budget	General Note: Most revenue accounts and certain expenses have been seasonally adjusted.
Revenues					
Current Pledge Contrib	143,792	143,792			
Non-Pledge Contrib	8,474	8,474			
Pledge Overage	535	535			
Prior Year Pledges	3,880	3,880			
Loose Offerings	710	710			
Women's Assoc	2,500	2,500			
Fees & Nursery School	4,723	4,723			
Interest	-	-			
Housing Trust	-	-			
Endowment I	-	-			
Endowment II	-	-			
Mission Offering	775	775			
Special Events Income	-	-			
Total Revenues	<u>165,389</u>	<u>165,389</u>			
Expenses					
Pastoral	28,166	28,166			
Missions	8,271	8,271			
Children's Ministry	2,748	2,748			
Confirmation & Youth	3,507	3,507			
Pastoral Care	4,695	4,695			
Membership	-	-			
Adult Education	-	-			
Services & Sacraments	-	-			
Fellowship	-	-			
Music	7,808	7,808			
Stewardship	24	24			
General & Administrative	12,766	12,766			
Church Property	22,046	22,046			
Pageant	642	642			
Capital Reserve	-	-			
Total Expenses	<u>90,673</u>	<u>90,673</u>			
Net	<u><u>74,717</u></u>	<u><u>74,717</u></u>			
General Fund	89,028				
Capital Reserve	252,878				



Glenview Community Church
Analysis of Revenues & Expenses - Summary Portrait 2011
January 2011

Accounts	MTD Actual (This Year)	MTD Budget (This Year)	YTD Actual (This Year)	YTD Budget (This Year)	YTD Actual (Last Year)	Annual Budget (This Year)
Revenues						
Total Revenues	\$165,389.13	\$0.00	\$165,389.13	\$0.00	\$158,972.95	\$0.00
Expenses						
Pastoral Expenses	\$28,166.17	\$0.00	\$28,166.17	\$0.00	\$30,963.83	\$0.00
Missions	\$8,271.00	\$0.00	\$8,271.00	\$0.00	\$7,818.00	\$0.00
Children's Ministry	\$2,747.65	\$0.00	\$2,747.65	\$0.00	\$2,501.39	\$0.00
Confirmation & Youth Ministry	\$3,506.83	\$0.00	\$3,506.83	\$0.00	\$3,650.32	\$0.00
Pastoral Care	\$4,695.13	\$0.00	\$4,695.13	\$0.00	\$4,650.37	\$0.00
Membership	\$0.00	\$0.00	\$0.00	\$0.00	\$99.05	\$0.00
Adult Education	\$0.00	\$0.00	\$0.00	\$0.00	\$0.00	\$0.00
Services & Sacraments	\$0.00	\$0.00	\$0.00	\$0.00	\$0.00	\$0.00
Fellowship	\$0.00	\$0.00	\$0.00	\$0.00	\$0.00	\$0.00
Music	\$7,807.70	\$0.00	\$7,807.70	\$0.00	\$8,209.44	\$0.00
General & Administrative	\$12,766.10	\$0.00	\$12,766.10	\$0.00	\$14,537.76	\$0.00
Stewardship	\$23.80	\$0.00	\$23.80	\$0.00	\$56.09	\$0.00
Church Property	\$22,045.87	\$0.00	\$22,045.87	\$0.00	\$25,066.65	\$0.00
Pageant	\$642.29	\$0.00	\$642.29	\$0.00	\$362.50	\$0.00
Capital Reserve	\$0.00	\$0.00	\$0.00	\$0.00	\$0.00	\$0.00
Long Range Plan Funds	\$0.00	\$0.00	\$0.00	\$0.00	\$0.00	\$0.00
Total Expenses	\$90,672.54	\$0.00	\$90,672.54	\$0.00	\$97,915.40	\$0.00
Net Total	\$74,716.59	\$0.00	\$74,716.59	\$0.00	\$61,057.55	\$0.00

Accounts	MTDActual (This Year)	MTD Budget (This Year)	YTDActual (This Year)	YTD Budget (This Year)	YTDActual (Last Year)	Annual Budget (This Year)
Revenues						
9105 - Current Pledge Contributions	\$143,791.96	\$0.00	\$143,791.96	\$0.00	\$139,124.43	\$0.00
9107 - Non-Pledge Contributions	\$8,474.00	\$0.00	\$8,474.00	\$0.00	\$3,862.00	\$0.00
9109 - Pledge Overage Contributions	\$535.00	\$0.00	\$535.00	\$0.00	\$140.00	\$0.00
9110 - Prior Year Pledge	\$3,880.00	\$0.00	\$3,880.00	\$0.00	\$6,650.00	\$0.00
9115 - Loose Offering	\$710.06	\$0.00	\$710.06	\$0.00	\$786.05	\$0.00
9124 - Church School Offering	\$0.00	\$0.00	\$0.00	\$0.00	\$108.12	\$0.00
9130 - Women's Association	\$2,500.00	\$0.00	\$2,500.00	\$0.00	\$0.00	\$0.00
9135 - Building Fees	\$980.00	\$0.00	\$980.00	\$0.00	\$1,886.00	\$0.00
9142 - Nursery School	\$3,743.11	\$0.00	\$3,743.11	\$0.00	\$3,743.11	\$0.00
9145 - Interest Income	\$0.00	\$0.00	\$0.00	\$0.00	\$4.64	\$0.00
9147 - Housing Trust Income	\$0.00	\$0.00	\$0.00	\$0.00	\$1,879.09	\$0.00
9157 - Endowment Income II	\$0.00	\$0.00	\$0.00	\$0.00	\$769.51	\$0.00
9180 - Christmas	\$755.00	\$0.00	\$755.00	\$0.00	\$0.00	\$0.00
9190 - One Great Hour of Sharing	\$20.00	\$0.00	\$20.00	\$0.00	\$20.00	\$0.00
Total Revenues	\$165,389.13	\$0.00	\$165,389.13	\$0.00	\$158,972.95	\$0.00
Expenses						
Pastoral Expenses						
9302 - Salaries	\$8,272.34	\$0.00	\$8,272.34	\$0.00	\$8,272.34	\$0.00
9304 - Auto Expense	\$99.45	\$0.00	\$99.45	\$0.00	\$53.50	\$0.00
9306 - Expense Reimbursement	\$0.00	\$0.00	\$0.00	\$0.00	\$109.71	\$0.00
9308 - Annuities	\$6,503.77	\$0.00	\$6,503.77	\$0.00	\$6,503.77	\$0.00
9310 - Conferences / Continuing Educa	\$575.26	\$0.00	\$575.26	\$0.00	\$398.40	\$0.00
9312 - Senior Minister Allowance	\$12.39	\$0.00	\$12.39	\$0.00	\$0.00	\$0.00
9314 - Housing Allowance	\$7,212.84	\$0.00	\$7,212.84	\$0.00	\$7,212.84	\$0.00
9316 - Assoc. Minister Allowance	\$39.38	\$0.00	\$39.38	\$0.00	\$0.00	\$0.00
9382 - Insurance-Health	\$4,353.06	\$0.00	\$4,353.06	\$0.00	\$7,315.59	\$0.00
9384 - Social Security Add On	\$1,097.68	\$0.00	\$1,097.68	\$0.00	\$1,097.68	\$0.00
Total Pastoral Expenses	\$28,166.17	\$0.00	\$28,166.17	\$0.00	\$30,963.83	\$0.00
Missions						
9450 - Mission Offering	\$775.00	\$0.00	\$775.00	\$0.00	\$20.00	\$0.00
9454 - Missions	\$7,496.00	\$0.00	\$7,496.00	\$0.00	\$7,798.00	\$0.00
Total Missions	\$8,271.00	\$0.00	\$8,271.00	\$0.00	\$7,818.00	\$0.00
Children's Ministry						
9464 - Salaries-CM	\$2,317.05	\$0.00	\$2,317.05	\$0.00	\$2,216.34	\$0.00
9466 - SS-CM	\$177.25	\$0.00	\$177.25	\$0.00	\$169.55	\$0.00
9468 - Spiritual Formation	\$28.35	\$0.00	\$28.35	\$0.00	\$115.50	\$0.00
9496 - Childcare	\$225.00	\$0.00	\$225.00	\$0.00	\$0.00	\$0.00
Total Children's Ministry	\$2,747.65	\$0.00	\$2,747.65	\$0.00	\$2,501.39	\$0.00
Confirmation & Youth Ministry						
9526 - Salaries-CY	\$2,600.80	\$0.00	\$2,600.80	\$0.00	\$2,525.00	\$0.00
9528 - SS-CY	\$198.96	\$0.00	\$198.96	\$0.00	\$193.16	\$0.00
9536 - Sr High - Education	\$0.00	\$0.00	\$0.00	\$0.00	\$490.20	\$0.00
9538 - Sr High - Social	\$707.07	\$0.00	\$707.07	\$0.00	\$441.96	\$0.00
Total Confirmation & Youth Ministry	\$3,506.83	\$0.00	\$3,506.83	\$0.00	\$3,650.32	\$0.00
Pastoral Care						
9550 - Salaries-PN	\$4,520.13	\$0.00	\$4,520.13	\$0.00	\$4,475.37	\$0.00
9552 - Pastoral Care Board	\$175.00	\$0.00	\$175.00	\$0.00	\$175.00	\$0.00
Total Pastoral Care	\$4,695.13	\$0.00	\$4,695.13	\$0.00	\$4,650.37	\$0.00
Membership						
9576 - Membership	\$0.00	\$0.00	\$0.00	\$0.00	\$99.05	\$0.00
Total Membership	\$0.00	\$0.00	\$0.00	\$0.00	\$99.05	\$0.00
Music						
9648 - Salaries-Music	\$5,921.89	\$0.00	\$5,921.89	\$0.00	\$5,749.43	\$0.00
9650 - SS-Music	\$453.03	\$0.00	\$453.03	\$0.00	\$439.82	\$0.00
9652 - General - Instrumentalists	\$275.00	\$0.00	\$275.00	\$0.00	\$62.50	\$0.00
9654 - General - Organ & Piano Care	\$0.00	\$0.00	\$0.00	\$0.00	\$695.00	\$0.00
9666 - Chancel Choir - Music	\$0.00	\$0.00	\$0.00	\$0.00	\$151.24	\$0.00
9670 - Organ Music	\$0.00	\$0.00	\$0.00	\$0.00	\$126.78	\$0.00
9772 - Bell Choir- Mu8lc	\$0.00	\$0.00	\$0.00	\$0.00	\$324.67	\$0.00
9780 - Children's Choir - Music	\$477.78	\$0.00	\$477.78	\$0.00	\$0.00	\$0.00

Glenview Community Church
 Analysis of Revenues & Expenses - Detail Portrait 2011
 January 2011

Accounts	MTDActual (This Year)	MTD Budget (This Year)	YTDActual (This Year)	YTD Budget (This Year)	YTD Actual (Last Year)	Annual Budget (This Year)
9784 - Copyright Expenses	\$680.00	\$0.00	\$680.00	\$0.00	\$660.00	\$0.00
Total Music	\$7,807.70	\$0.00	\$7,807.70	\$0.00	\$8,209.44	\$0.00
General & Administrative						
9822 - Postage (except B'dcaster)	(\$40.76)	\$0.00	(\$40.76)	\$0.00	\$687.86	\$0.00
9830 - Social Security	\$589.73	\$0.00	\$589.73	\$0.00	\$572.55	\$0.00
9832 - Office Staff Salaries	\$7,708.83	\$0.00	\$7,708.83	\$0.00	\$7,484.34	\$0.00
9834 - Payroll Service	\$704.48	\$0.00	\$704.48	\$0.00	\$707.69	\$0.00
9836 - Telephone	\$821.17	\$0.00	\$821.17	\$0.00	\$539.56	\$0.00
9838 - Stationery & Supplies	\$1,435.18	\$0.00	\$1,435.18	\$0.00	\$387.77	\$0.00
9840 - Equip. Maintenance/ Repair	\$1,075.97	\$0.00	\$1,075.97	\$0.00	\$1,194.00	\$0.00
9842 - Broadcaster	\$0.00	\$0.00	\$0.00	\$0.00	\$1,077.00	\$0.00
9846 - Communications/Promotions	\$360.00	\$0.00	\$360.00	\$0.00	\$210.00	\$0.00
9848 - Kitchen	\$71.50	\$0.00	\$71.50	\$0.00	\$504.19	\$0.00
9850 - Insurance-Prop/Casualty/Work	\$0.00	\$0.00	\$0.00	\$0.00	\$1,124.00	\$0.00
9855 - Executive Board Expenses	\$40.00	\$0.00	\$40.00	\$0.00	\$0.00	\$0.00
9856 - Bank Fees	\$0.00	\$0.00	\$0.00	\$0.00	\$48.80	\$0.00
Total General & Administrative	\$12,766.10	\$0.00	\$12,766.10	\$0.00	\$14,537.76	\$0.00
Stewardship						
9802 - Offering Envelopes	\$3.48	\$0.00	\$3.48	\$0.00	(\$95.00)	\$0.00
9803 - Stationery	\$20.32	\$0.00	\$20.32	\$0.00	\$0.00	\$0.00
9810 - Miscellaneous	\$0.00	\$0.00	\$0.00	\$0.00	\$151.09	\$0.00
Total Stewardship	\$23.80	\$0.00	\$23.80	\$0.00	\$56.09	\$0.00
Church Property						
9862 - Facility Staff-Salaries	\$10,624.96	\$0.00	\$10,624.96	\$0.00	\$9,982.84	\$0.00
9863 - Facility Staff - Overtime expenSE	\$297.00	\$0.00	\$297.00	\$0.00	\$243.00	\$0.00
9864 - Social Security	\$835.54	\$0.00	\$835.54	\$0.00	\$782.29	\$0.00
9868 - AudioNideolTelephonics	\$0.00	\$0.00	\$0.00	\$0.00	\$54.79	\$0.00
9870 - Electricity	\$1,677.70	\$0.00	\$1,677.70	\$0.00	\$2,041.70	\$0.00
9872 - Water	\$338.95	\$0.00	\$338.95	\$0.00	\$0.00	\$0.00
9874 - N. I. Gas	\$2,787.58	\$0.00	\$2,787.58	\$0.00	\$3,401.67	\$0.00
9876 - HVAC Repair & Maintenance	\$1,064.00	\$0.00	\$1,064.00	\$0.00	\$0.00	\$0.00
9878 - Building Repair and MaintenancI	\$570.64	\$0.00	\$570.64	\$0.00	\$190.46	\$0.00
9880 - Maintenance Contracts	\$1,050.00	\$0.00	\$1,050.00	\$0.00	\$1,832.47	\$0.00
9882 - Scavenger	\$372.36	\$0.00	\$372.36	\$0.00	\$362.26	\$0.00
9884 - Furn., Fixt., Equip. Purchase	\$235.93	\$0.00	\$235.93	\$0.00	\$5,481.32	\$0.00
9885 - Non-contract Landscaping	\$2,191.21	\$0.00	\$2,191.21	\$0.00	\$693.85	\$0.00
Total Church Property	\$22,045.87	\$0.00	\$22,045.87	\$0.00	\$25,066.65	\$0.00
Pageant						
9912 - Pageant	\$642.29	\$0.00	\$642.29	\$0.00	\$362.50	\$0.00
Total Pageant	\$642.29	\$0.00	\$642.29	\$0.00	\$362.50	\$0.00
Total Expenses	\$90,672.54	\$0.00	\$90,672.54	\$0.00	\$97,915.40	\$0.00
Net Total	\$74,716.59	\$0.00	\$74,716.59	\$0.00	\$61,057.55	\$0.00

Accounts

Assets

Current Assets

Cash

1010 - Operating Account \$437,736.49
 1200 - Special Petty Cash Fund \$1,000.00

Total Cash \$438,736.49

Investments

1110 - Housing Trust \$426,883.00
 1130 - Nursery School Vanguard \$95,289.37
 1140 - Romeiser Trust Account \$173,058.00
 1160 - Endowment Fund \$133,765.00
 1170 - Capital and Reserves Account \$300,022.61
 1180 - Nursery School GSB CD#323510 \$25,746.68
 1185 - Hudson and Marjorie Wirth Endowment \$531,737.15
 1190 - Nursery School GSB CD#323512 \$31,335.36

Total Investments \$1,717,837.17

Prepaid Expenses \$140.40

Total Current Assets \$2,156,714.06

Fixed Assets

1770 - Church Land \$100,126.50
 1790 - Church Garage & Contents \$10,074.00
 1800 - Church Building \$5,430,585.00
 1810 - Church Furnishings \$426,130.00
 1815 - Office Equipment \$91,458.00
 1816 - Art & Music Collections \$50,400.00
 1817 - Organ \$896,000.00
 1820 - Canoes \$1,200.00
 1825 - Accumulated Depreciation (\$742,695.00)

Total Fixed Assets \$6,263,278.50

Total Assets \$8,419,992.56

Liabilities, Fund Principal, & Restricted Funds

Liabilities Withholding

Taxes

2900 - Withholding #403B Total \$525.00

Withholding Taxes Fixed Assets \$525.0

0001 - Represented by Fixed Assets 0

Total Fixed Assets \$6,263,278.50

Total Liabilities

Fund Principal

\$6,263,278.50

0002 - Beginning Balance-General Fund \$6,263,803.50

Excess Cash Received \$14,311.77

Total Fund Principal and Excess Cash Received \$74,716.59

Restricted Funds

Total Temporarily Restricted Total \$89,028.36

Permanently Restricted Total \$801,554.80

Restricted Funds \$1,265,605.90

Total Liabilities, Fund Principal, & Restricted Funds

\$2,067,160.70

\$8,419,992.56