

Glenview Community Church Groundrules and Behavioral Covenant

As caring members of GCC, we accept and agree to abide by the groundrules stated below. Further, we commit to holding each other accountable for behaving in accordance with these groundrules during all our meetings or interactions. We believe that individually, we should endeavor to follow the Golden Rule to " ... Do unto others as you would have others do unto you ... "

I Will:

Focus on issues.

Listen carefully, respectfully consider alternative points of view and stay open to influence and inquiry.

Speak calmly and respectfully in presenting my views or responding to questions.

Think for the benefit of GCC and help the group achieve its objectives through inclusive solutions.

Focus on the future of GCC while respecting our rich history as a church.

Apologize if my words or thoughts were hurtful or perceived as disrespectful.

Speak up if I believe these ground rules are not being followed.

Behave in a manner consistent with the role model that I am to others in the church.

I Will NOT:

Make the issues personal.

Interrupt others or fail to recognize the contributions of others.

Respond angrily to other's comments or fail to seek to understand the other person's perspective first.

Focus on my interests only or think/speak in divisive terms .

Be resistant to new ideas for GCC.

Disregard how others receive my comments.

Ignore behavior I believe is inappropriate.

Speak negatively of others when they are not present or present issues for group discussion in order to punish or embarrass others.

**GLENVIEW COMMUNITY CHURCH EXECUTIVE BOARD
MEETING AGENDA
Tuesday, October 26, 2010
7 PM**

- I. Call to Order/Opening Reflection-John Demler
- II. Clergy Comments
- III. Consent Agenda
 - A. August Executive Board Minutes
 - B. **Sept./Oct.** Reports/ Minutes from Ministers, Boards and Others
- IV. Treasurer's Report
- V. Committee Reports
 - A. Leadership
 - B. Planning Committee
 - C. PMRC
- VI. Board Reports
 - A. Services & Sacraments
 - B. Stewardship
 - C. Property
 - D. Finance
- VII. Selected Pending Matters
 - A. American Girl
 - B. Board's Goals for the year
 - C. Child Care-Adult Ed.
 - D. Quilt Auction
- VIII. Congregational Comments
- IX. Adjournment & Lord's Prayer

Meeting Reminders:

Planning Committee Mtg.: TBD

Leadership Committee Meeting: Nov. 21, 10:45 AM Founders

Executive Board Meeting: November 16, 2010 -7PM

Operating Committee Meeting: TBD

PMRC Meeting: TBD

Sunday Service Attendance 2008 - 2010

<u>2008</u>				<u>2009</u>				<u>2010</u>			
8:30/ 9:30	10:30	Total	AVG	8:30/ 9:30	10:30	Total	AVG	8:30/ 9:30	10:30	Total	AVG
Jan.	206		206	151		151		101		101	
	68	242	310	58	212	270		49	230	279	
	82	179	261	92	235	327		55	223	278	
	314		314	323		323		239		239	Interfaith
								69	229	298	
			<u>273</u>				<u>268</u>				
Feb	95	218	313	86	277	363		53	258	311	
	89	214	303	111	234	345		65	229	294	
	66	164	230	98	263	361		73	187	260	
	100	257	357	73	223	296		68	216	284	
			<u>301</u>				<u>341</u>				<u>287</u>
Mar	63	269	332	69	238	307		65	231	296	
	71	294	365	47	213	260			223	223	
	123	404	527	74	243	317		69	196	265	
	82	274	356	27	123	150		93	206	299	<u>270</u>
			<u>342</u>								
	393	466	859								
	14		Easter								
	62		Friday Noon Hour								
	85		Maundy Thurs.								
	58	131	189								
			<u>454</u>								
Apr	79	292	371	120	270	390					
	240	457	697	73		Maundy Thursday					
	89	226	315	113		Good Friday					
	61	367	428	447	757	1204	East.	87		Maundy Thursday	
				112	363	475	Musical	75		Good Friday	
				60	451	511	Confirm	400	602	1002	Easter
								56	233	289	
								126	276	402	Musical
								64	317	381	Confirm
			<u>453</u>				<u>645</u>				<u>519</u>
May	143	232	375	41	423	464	Choir	55	177	232	
	81	192	273	98	377	475	Kids Sing	79	400	479	
	81	304	385	69	118	187		70	160	230	
	131		begin 1 9:30 service	99		begin 1 9:30 service		120	217	337	
				194		Youth Sunday		125	- 1 service	125	
			<u>291</u>				<u>284</u>				<u>281</u>
Jun	244		244	214		214		138		138	
	152		152	143		143		106		106	
	164		164	127		127		116		116	
	132		132	156		156		125		125	
				147		147					
			<u>168</u>				<u>160</u>				<u>122</u>

	<u>2008</u>				<u>2009</u>				<u>2010</u>			
Mon	8:30/ 9:30	10:30	Total	AVG	8:30/ 9:30	10:30	Total	AVG	8:30/ 9:30	10:30	Total	AVG
Jul	139		139		98		98		116		116	
	159		159		136		136		124		124	
	164		164		129		129		132		132	
	155		155		172		172		235		235	
				<u>154</u>				<u>131</u>				<u>152</u>
Aug	160		160		121		121					
	146		146		101		101		111		111	
	200		200		137		137		141		141	
	199		199		161		161		134		134	
	123		123		130		130		150		150	<u>134</u>
				<u>166</u>				<u>101</u>				
Sep	284 Rally		284		114		114		123		123	
	43	183	226		290		290		307		307	
	51	161	212		53	281	334		237		237	
	69	208	277		82	299	381		238		238	
				<u>250</u>				<u>238</u>				<u>226</u>
Oct	96	386	482		92	283	375		189		189	
	76	178	254		59	224	283		290		290	
	77	247	324		153	337	490		220		220	
	68	235	304		60	199	259					
				<u>340</u>				<u>352</u>				
Nov	76	287	363		76	230	306					
	85	205	290		53	194	247					
	55				111		111					
	114	308	422		109	243	352					
	119		119		173		173					
				<u>250</u>				<u>239</u>				
Dec	10:30	1:30	4:00		10:30	1:30	4:30		10:30	1:30	4:30	Pageant
	486	379	484	1349	470	236	526	1232				
	116	278	394		122	236	358					
	50	187	237		48	226	274					
	4:30	7:30	11:00		4:30	7:30	11:00		4:30	7:30	11:00	
	662	112	445	1219	593	101	368	1062				
	120		120									
				<u>664</u>				<u>690</u>				

Senior Minister's Report

Executive Board

October 26, 2010

We are well into the church program year with choirs, Sunday school, Confirmation, PYF, Adult Education seminars meeting on a regular basis. This is a busy congregation with lots of activities and it is easy to forget all that is occurring because no one can be involved in all that is happening. Sometimes if we are not engaged in an activity or event, we conclude that nothing is occurring in that area. It is helpful to continue to remember, for example, that while adults are worshiping at 9:30 a.m. another congregation is meeting in Sunday school and Confirmation classes. Our Sunday school is larger than many congregations in other places.

In addition to participating in various meetings this month both with individuals and with groups or boards I also attended a helpful workshop sponsored by the Alban Institute, "Stepping Up to Supervision." In addition to the value of the workshop I saw a colleague who moved from this area to Lexington, KY and a member of a former congregation I served is now serving as pastor of a UCC congregation in Houston, TX.

We had an excellent World Communion worship service on October 3. The Services and Sacraments Board decorated the altar with loaves of bread from various cultures which contributed visually to worship. I conducted baptism for Hayden Easton Zaphe. The Zaphes are new members and baptism is such a celebrative time for members who have been here several years and for those are just beginning their journeys with us. The staff had an engaging worship planning meeting as we prepared and planned for worship services through the Advent/Christmas seasons. A New Member Orientation Class was held on October 17th and new members will be introduced during the worship service on October 31st. The Resource Development Committee had a very successful "American Girl Event" and they will provide more detail about that. I have communicated with the Planning Committee and the Finance Board regarding some important budget items for the 2011 budget.

Peggy and I had the unique opportunity to take a week of vacation in October. Peggy commented she did not recall seeing the variety of beautiful colors in various places. Then, she realized this was the first fall vacation we had taken in nearly forty years because, until her retirement, our calendars have been linked to the academic year. It was a refreshing break and enabled us to see our children and grandchildren an additional time this year.

On a final note, I encourage you to read the novel, Still Alice, by Lisa Genova. It is a painfully insightful and helpful book about Alzheimer's disease. In essence there are two kinds of people in our culture, those who know someone with Alzheimer's disease and those who will know someone. The book helps the reader understand the damage and difficulty this disease causes the patient as well as the struggles and challenges the disease causes family and friends who relate to and seek to help a person with Alzheimer's.

Howard W. Roberts

Executive Board Report October 2010 Rev. Dr. Pam Keckler

Activities/Reports

- Assisted with worship two times and preached once
 - Led worship and communion with families Oct. 3
 - Assisted with New Member class
 - Planning Women's Winter Retreat & next fall retreat
 - Performed 2 weddings
 - Led memorial service for family of Mary Hanscom
 - Led memorial service for family & friends of Lois Sargent
 - Led burial service for family of Mac McMillion who died Oct. 16.
 - Attended Usher meeting, RDC, Conf/Youth Board and S/Sacrament mtgs.
 - Enjoyed 60 plus luncheon at GCC; Ellen Scholly talked about the new library
 - Worship planning for fall and beyond
 - Attended Planning and Operational meetings
 - Met with Prayer Shawl Ministry group
 - Ate dinner with GCC members who reside at Covenant Village
 - Meeting weekly with Beth Raebel to work on Pageant issues.
- This year we'll be having only two pageant services: 10:30 and 2:00.
- Attended American Girl event on Saturday to support and to assist where needed
 - Attended A Just Harvest Banquet in Chicago to honor Pam Riedy and Sandy Frantz.
 - Participated in a Worship Alive workshop on "Scripture in Worship"
 - Attended a preview of a PBS movie on Advance Directives
 - Attended GLAUCE – Great Lakes Association of United Church Educators at Techny

Reflections

As you can see in my list above this has been a full month of church activities and events. I have truly enjoyed our lovely weather and beautiful fall season. I also look forward to spending some time with my children and their families over Halloween weekend.

Each month when I write my report for Executive Board, I think about what or who has inspired me recently. Here are some samples.

The first is my time spent with American Girl on a Saturday in Lincolnshire. What an inspiring day that was for me. I wasn't sure I could fit it into my calendar but I decided it was important so I rearranged some things. When I saw one of the girls from our church ready to begin her part in the show, she got this huge smile and said aloud, "Oh Yay! Rev. Keckler is here." (Yes, that made my day!) It was an amazing experience to see a variety of people enter the doors stopping to look at brochures about GCC, little girls carrying their dolls as they found their way to their tables, a rainbow of girls who modeled the clothes with their dolls, and all of our volunteers who worked so diligently. Special thanks to Sally Thuresson and team who helped bring the positive energy and extravagant welcome to all.

I was able to have an interesting conversation with Nancy Bloom from Glenview/Northbrook Children and Youth Services at the American Girl Event. She told me how exciting it was for GCC to be hosting this event. I told her not everyone was happy and positive about this endeavor – its exclusiveness to children who could not afford these dolls, the money involved, etc. Nancy shook her head and told me that it takes a variety of ways to fund programs, churches and organizations. Some are expensive and some are cheaper. For example, she told me that they have a casino night that most people can afford which is a lot of fun. They also have a plated dinner of several hundred dollars that only a few can afford. But we need them both in order to survive. She told me that we should be proud of every mission endeavor we attempt.

Nancy and I also talked about a program I had started over ten years ago at GCC for one of my D. Min. projects = “Homework Helpers”. It was later changed to “Study Buddies” and is still going on today. Nancy mentioned that she is now feeding the children supper so that they can work better. Twice a week she invites the parents and feeds them as well. I asked Nancy how much per person that cost her and she said, “I’m thrifty. I can do it for \$3-\$4 a person. Guess what my next mission project will be!

Finally, I received a thank you card from a couple I had married in August on Friday the 13th in a nearby park. Their note said, “You believed in us and didn’t question our love for each other. You made it possible for us to become married, when others turned us away because of our differences in religion. There aren’t enough ways to say ‘Thank you, for all that you have given us.’

*Who has made your day? Who or what has inspired you?
Share your story with someone and give thanks.*

Pam

Glenview Community Church Adult Education Board Minutes

MEETING DATE/TIME/PLACE: Tuesday, October 12, 2010/ 7:00 pm/ Founders' Room

MEMBERS PRESENT: Marcy Blackwelder, Mark Brown, Nick Bubnovich, Vicki Buzard, Chris Calandra, Sally Sargent, Earle Shultz

Members excused: Sally Schreiner

SUMMARY OF MEETING

Discussion Items:

New Business

1. We discussed the CALBOS presentation on Sunday. There were about 60-70 people in attendance and it was very good.

The cost of publicity was \$347 which will be covered by an anonymous donor. We will need to budget for publicity costs for next season or ask that a publicity line-item be added to the overall church budget.

2. Child care from 9-12 on Sunday mornings has not been planned due to lack of resources and potential lack of need. We will wait and see if there is interest and continue to investigate how to pay for child care.

3. Thanks to Marcy Blackwelder and Sheryl Long for their collaboration and creation of a flyer/brochure for Adult Education programming. The logo is fabulous and the information is concise and easy to read.

4. Thanks to Sheryl Long for doing the publicity for the Lost Boys presentation in October.

5. Currently scheduled/planned programming:

October:

- 3 Presentation by the Missions Outreach Board
- 10 *Lost Boys of the Sudan* presentation at 3 pm in the sanctuary
- 17 "The How, Why, and Spirituality of Quilting"
- 24 Ron Miller (topic to be announced)
- 31 Ron Miller

November:

- 7 Ron Miller
- 14 Ron Miller
- 21 Bill Helmuth travelogue on Lebanon and Syria
- 28 **Thanksgiving Weekend—No Adult Ed**

December

- 5 **Pageant—No Adult Ed**
- 12 Jim Shellard discusses his mountain climbing experiences
- 19 The GCC "Puppet People" present...
- 26 **Christmas Weekend—No Adult Ed**

January

2 New Year's weekend—No Adult Ed

9

16

23 No Adult Education—Interfaith Family Worship service

30

February

6

13 No Adult Ed—midwinter congregational meeting

20

27

March

6

13

20

27

April

3

10

17

24 Easter Sunday—No Adult Education

May

1

8 Mother's Day—No Adult Education

15

22

29 Memorial Day Weekend –No Adult Education

7. There was some discussion about changing the Adult Education venue to the Founders' Room. We think it would encourage folks at coffee hour in the Mayflower Room to come in for AE. Chris will contact Rev. Keckler and Tania about making the switch for the Ron Miller presentations.

We adjourned at 8:00 with the Lord's Prayer.

MINUTES SUBMITTED ON: Monday, October 18, 2010 by Chris Calandra

NEXT BOARD MEETING SCHEDULED: Tuesday, November 9, 2010 at 7 pm in the Founders' Room.

Jim brought up that between the GCC Rainbow Garden and Pleasant Ridge School's Garden over four hundred pounds of vegetables have been given to the Northfield Food Pantry.

Jim also mentioned that the 4th graders are going to be Wanderers of the Church. In other words the 4th graders will spend 5 minutes of each Sunday School time visiting a part of the Church in an effort to familiarize them with GCC and its history.

World Community Sunday

Pam Riedy

Pam coordinated the children's service on World Communion Sunday. The theme was Eating Your Way Through Handel's Messiah. Each child was given a napkin that basically became his "palette." Four tunes from the Messiah were played and the children used various snack foods to create this musically-inspired art. Pam suggested that the Children's Board could create a set of instructions on how to do this activity during the Lenten Season that families could use at home. Pam was pleased with the success of this activity. She will bring pictures to the next meeting. Kathy suggested that Pam provide an article and pictures of the event for publication in the Broadcaster.

Coffee Hour - October 31

Group

Sarah and Jill offered to serve coffee. Jim will send out the directions. Because it is Halloween it was decided that banana bread baked by the Sunday School Children will be served. Jim will take a look at providing fruit as well.

Communion - November 7

Group

Jim indicated that each Board has been asked to join the Services and Sacraments Committee to serve Communion. The Children's Board is scheduled to serve Communion on November 7. Christopher, Jim, Julie and Stephanie have volunteered and need to arrive at Church by 9:10 a.m. on the 7th and meet in the front row.

New Business

Group

Kathy and Jim to figure out schedule for the 4th grade Church history sessions.

A Children's Board Mission Statement was discussed and it was decided that the wording would be: *"To implement relevant and engaging Christian-based worship, learning, and service experiences for children through sixth grade and their families."*

Christopher questioned what Board the Children's Choir fell under. An educated guess was that the Children's Choir was under the Music Board's jurisdiction.

Christopher volunteered to create a flyer/brochure targeted toward new members and those visiting and "shopping" for a church. He will design a tri-fold brochure that will include print and pictures on each of 6 sides. An e-mail will be sent to all Board members for input for the brochure. Members can respond with some of the questions they had when "church shopping" that can be answered in the tri-fold. He will have a mock-up for the next meeting. Christopher believes that the project

could be completed for approximately \$150.00. Pam suggested that the information also be put on the Website. Corey suggested adding information about the Confirmation process and also about PYF. Information should also include the number of children in the congregation.

Jim asked that everyone bring a wire cutter to the next meeting to use in preparation for the Advent wreath-making event. The event includes learning about the meaning of Advent and creating a wreath as a family.

The meeting was adjourned with the Lord's Prayer at 7:55 p.m.

Next meeting: November 2.

Glenview Community Church Youth and Confirmation Board

October 12, 2010

Present: Melissa Aki, Kim Blake, Debbie Berg, Cindy Gabuzzi, Michelle Monteith, Mark Sawires

Staff: Elizabeth Ciccolini, Reverend Keckler

Excused: Brian Grad, Ellen Dean

Meeting was called to order at 7:30 by Debbie. Sept. minutes were approved. Kim gave the devotion.

Debbie passed out a "Safe Church" form to board members who don't currently have one on file. They should be completed and returned to Jane in the office. Pam will send out forms to those not in attendance.

The next coffee hour to be hosted by our board is January 23rd. In addition to serving coffee, we will need a volunteer to staff the membership table in the Mayflower Room.

6-7-8 CLUB: On Sunday, October 10th 3 large tubs of hygiene kits were assembled for the Night Ministry. Elizabeth reported that there was a large group of 8th grade boys. Thank you Kim for delivering.

CONFIRMATION REPORT: Elizabeth said that Confirmation Chaos was a success and thanked those that helped. The kids were very well behaved and Elizabeth received positive feedback from several parents. The food was a hit with the kids.

PYF UPDATE:

RALLY DAY: 24 kids attended the Rally Day Luau out of a list of 33 active kids. All of the juniors from last year returned as seniors and there is a fairly even distribution of participants amongst the 4 classes. Elizabeth broke the kids into 2 groups: Freshman/Sophomores and Juniors/Seniors. The kids put together 35 birthday bags (thanks Ellen for delivering) and enjoyed making the t-shirts. The cooking project was also a big hit – thanks Melissa. Kids also enjoyed making candles.

14 kids are signed up to go to Great America. Elizabeth needs one more parent to drive and will send an e-mail to the parents of the kids attending.

The 10/24 activity is Garden Clean-Up. Gardening tools are needed.

On Tuesday, November 2, a few kids will serve on the Night Ministry bus. The food (hot dogs and fruit) will be prepared at church from 6:30-8 and then they will go downtown to serve from 9-10. Please drop off any extra Halloween candy to the Youth Room and they will take it down.

Pilgrim Park Retreat (Princeton, Illinois) will take place November 5-7th. 9 juniors/seniors will go down on Friday and 10-12 sophomores/freshman will go on Saturday. The topic will be stress management and staying in control. A driver (to drive underclassmen) is needed. Elizabeth will send out a request to parents.

Christmas Tree sales are taking place and the youth will be selling at the October coffee hours. Fliers will be handed out on Sundays to parents picking their kids up from the gym after Sunday School. Thanks to Ellen for delivering fliers to Methodist Church. Melissa will be collecting the money.

NEW BUSINESS:

2011 Budget: Elizabeth would like to keep the budget the same for 2011 and is attempting to use all leftover supplies. PYF currently spends approximately \$110/active youth. She doesn't want to ask the parents for more; is hoping for a successful Christmas Tree sale. At some point, the furniture in the Youth Room will need to be replaced. Other items on wish list: new camera, PYF IPOD, Wii system.

Mentoring Program for Freshman Families: The idea of having a parent (who currently has a PYFer) representative in each confirmation class was discussed. This person would call the other parents of the 8th grade confirmands to discuss PYF. Confirmation Chaos will help introduce PYF as well. This is an evolving program with further discussion as the board sees fit.

Debbie will sign the board up to serve communion on Sunday, March 6th. PYF youth will help. This is a Sunday where the confirmands are in attendance for the church service.

Youth Event Publicity: Cindy will work on a PYF board that can be displayed on a bulletin board in a well-travelled area of the church. The board will be periodically updated with pictures and a blurb about recent PYF activities. Debbie will look into the Trib Local/Glenview Announcements to get community involvement published.

Fundraising: The SCRIP program was discussed; it has been successful at other churches including Methodist. The hurdle with this program is that it would take a lot of time for someone to monitor. Charge for 4th of July parking in GCC lot?

Meeting Adjourned. Next meeting November 9th, 7:30 in the Youth Room

Submitted by Kim Blake

GLENVIEW COMMUNITY CHURCH BOARD MINUTES

Membership Board

October 10, 2010 at 10:45 a.m. in the Parlor

MEMBERS PRESENT: Diane Carroccia, DeAnne Frank, Sue Hoffman, Mike Lauesen, Margaret Ludemann, Doug Morgan, Fran Oldham, Jill Ruter, Phyllis Scott, Dio Vega

MEMBERS EXCUSED: Dave Winton (Ex-officio)

SUMMARY OF MEETING

August Minutes Approved

- **Date of GCC Quilt Auction corrected from November 13 to November 6**

Executive Board

- **No Executive Board meeting in September**
- **Leadership Board Meeting**
 - Sunday, October 17 at 10:45
 - Doug Morgan will attend

New Business

- **Guest Speaker: Debby Shellard, former Director of Membership for GCC**
 - *Visitors and Potential Visitors*
 - Goals
 - Make them feel welcomed
 - Keep them connected
 - Communicate with them
 - Bread delivered to visitors within first week of first visit (Headed up by Bob McGee)
 - Get list of new residents from Chamber of Commerce and send out a welcome letter with a GCC magnet
 - Be sure ambassadors are extroverts who are not afraid to speak up ("Hello! What's your name?") and assist with directions and other questions
 - *Current Board suggestions/ideas*
 - Encourage visitors to stay for coffee hour after the service.
 - Be sure current members are aware of their presence (e.g., Pink coffee mug)
 - Make an effort to greet and meet these visitors
 - *New Member Classes (Lead by Howard and Pam)*
 - Baby-sitting
 - Be sure to offer
 - Cost to be covered by Membership Board
 - New Member Packet
 - What our church believes
 - How to get involved - Volunteer Opportunities Form
 - New members from the Fall class need to be invited back to Pasta Luigi, as guests of the Membership Board
 - Option to have a sponsor/mentor
 - *Current Board suggestions*
 - Create a list of what should be put in packet and keep copy in the copy room
 - Send out packet prior to class

- Include Volunteer Opportunity Card and Pledge Card – Encourage completion before class
 - Include Annual Directory and most current Pictorial Directory
 - Be sure to have representation from most of the boards
 - Have a meal for the Fall class members
 - Mike will discuss with Howard
 - At this time, it can be addressed, but not changes
- *Engaging Members*
 - There used to be a flip-book that listed information about different areas/activities in the church
 - The kiosk is filled with pamphlets and flyers with ways to get involved
 - Be sure new member's names are given to board chairs and the Leadership Board
 - New Member/Visitor Month
 - Highlight in Broadcaster
 - New Members/Visitors represented with a sticker
 - Include visitors in activities throughout the month
 - End month with a function to celebrate
 - *Current Board suggestions*
 - Quarterly Tours of the church after Sunday service coffee hour
 - Put information in Broadcaster and announce from the pulpit the day of the tour
 - Give everyone taking the tour a map of the church
- **Coffee Hour October 24**
 - Jill and Margaret at table in Mayflower Room
 - Diane will man visitor table in the transept
- **Serving Communion**
 - Membership Board is not interested in doing as a group
 - If you have an individual interest in serving communion (11/7/10, 11/24/10, 1/2/11, 2/6/11, 3/6/11, 4/3/11, 5/1/11, 6/5/11), please contact Carolyn Brown

Old Business

- **Quilt Auction**
 - Saturday, November 6
 - Friday, November 5 – DeAnne & Phyllis will set up a Visitor Table
 - No need for us to make paper "quilt"/collage of GCC since beautiful poster collages have already been created by Stewardship Board. Thank you Margaret!
- **Advent Cards**
 - Jill left a message for John Clonts (ordered cards in past), but has not heard back from him
 - Fran will write out instructions for addressing and sending the cards
 - These instructions will be added to the Membership Board file
- **Member Badges/Name Tags**
 - Dio will get badges for the Membership Board as an example/sample
- **Board Member Replacement**
 - Lori Eshoo, the person with whom Phyllis spoke regarding filling the vacant Membership Board position, cannot participate this year but would like to be considered for next year's board.
 - Please send an email to Phyllis with information regarding anyone who may be interested in currently filling this vacant board position.

- **Church Directory**
 - Creation of a "Membership" database to be discussed at November meeting
- **Visitor Table**
 - Interior maps of the church placed at the tables were collected
 - They need to be updated/corrected
 - Doug will follow up with staff
 - Sign up to man the table in the Narthex through January at November meeting
- **New Member Orientation Class – Sunday, October 17**
 - Mike will attend
 - Bring 2010-2011 GCC Membership Directory, Picture Directory and blue Volunteer Forms
- **New Member Sunday – October 24**
 - Phyllis will take pictures of new members and sit with them during the service
- **Volunteer Opportunities Form**
 - Phyllis will explain at service on November 7
 - Include form in program for that day
- **Bread Delivery to New Visitors**
 - Bob McGee continues to take care of this
- **Neighbor to Neighbor Volunteers**
 - Will be discussed at future meeting
- **Visitor Follow-up phone calls**
 - Should there be a procedure/script when calling?
- **Online Member Engagement Survey**
 - Jill and Margaret will discuss at a future meeting
- **Fun Facts**
 - Were lost from the GCC system when it went down
 - Tania will begin putting them in the Broadcaster
- **Devotional**
 - *The task ahead of us is never greater than the power behind us!*

Meeting adjourned with the Lord's Prayer

NEXT BOARD MEETING SCHEDULED FOR: November 14, 2010 at 10:45 a.m. in the Parlor

Minutes Submitted On: October 20, 2010 by DeAnne Frank

FELLOWSHIP BOARD MINUTES

Meeting at 10:30 on October 10th, in Room 213 at the Church.

Members Present: Karen Christiansen, Leanne Drennan, Ann Grant, Brad Smith, Melinda Krueger, Steve Krueger and C.J. Sultz (by phone).

Coffee Hour. Discussed the effect the move to a single service has had upon coffee hour needs. Ann Grant provided an update of usage of donut holes and refreshments to date. Updated new board members on procedures for supplying donut holes and refreshments. Advised members that the Fellowship board would be responsible for serving during the coffee hour on November 21 and again on May 13. Melinda will be contacting members for volunteers prior to those dates.

Long range goals. Shared Fellowship Board long range goals with members. Discussed each goal and possible additions, modifications and eliminations. Will finalize suggested changes at next meeting.

Rally Day. Reviewed Board participation in Rally Day event.

New Activities. Agreed to extend invitation to new church members to join us at the next Pancake Breakfast. Agreed to extend this invitation at New Member Orientation presentation on October 17.

Glenview Community Church
Missions Outreach Board, October 12, 2010

Present: Cathy Shapiro, Kristine Voelker, Tania McCarthy, Mark Lefens, Tom Lutz, Bill Ryan, Nancy Mullarkey, Tracy Sawires, Greg Eggleston

Excused: George Silca, Nan Conser

Meeting began with Tracy sharing information about the CMA Cluster 1 presentation on 10/12 by Reverend John Thomas at Des Plaines Congregational Church. "On the Road to NowHere"

Tom thanked the board members who assisted in putting together the MOB print materials, CD's, and who presented at the MOB 10/3 GCC Adult Ed. session.

Bill reported that six GCC members attended Community Renewal Society annual meeting: MOB members Kris, Tracy, Bill, and Greg in addition to Elizabeth Ciccolini and Mark Sawires.

A Just Harvest (formerly Good News Community Kitchen) annual dinner was 10/10/10: GCC members Sandy Frantz and Pam Riedy received honors at the dinner.

CMA/UCC work trip – MOB will publicize spring 2011 work trip organized by the Chicago Metropolitan Association of the UCC.

GCC Women's Association Social Service committee will be meeting to discuss benevolent giving allocations by second week of November. MOB will provide them with list of GCC 2010 approved agency grants as FYI.

American Girl Fashion Show on 10/16 and 10/17. Ticket sales strong. Request for volunteers.

Heifer Quilt Auction 11/6 – Come to shop and spread the word to your friends! If interested in volunteering, contact Beryl Bills.

Thanksgiving Offering 11/21/10 – MOB voted to split this year's Thanksgiving offering 50/50 between Northfield Food Pantry and San Lucas. Northfield Food Pantry distributes food all week and San Lucas has food distribution on Saturday mornings and provides an open door hot meal on Tuesday afternoons each week.

Agency assignments – MOB members will take a look at agency list, research, and decide which two agencies to represent this year.

Next meeting is November 9, 2010 at 7pm. Representative from Chicago Community Trust will be presenting. Open to all GCC members interested.

GCC Missions Outreach projects

A Just Harvest (fmrly GNCK) -- 2x per month meal prep/service (1st Sun, 3rd Wed each month)

Food on the 1st -- non-perishable food collection on 1st Sunday of each month

CROP Hunger Walk – Glenbrook on 10/17, GCC Confirmation on 10/24

RefugeeOne -- refugee apartment set up – whole church participation with comp. by mid/late November

6,7,8 and PYF outreach projects (3x)

Sunday school outreach projects

Greater Chicago Food Depository – January 2011

Rebuilding Together – 4/11

October 4, 2010

NAME OF BOARD: Music

ATTENDANCE: Bill Cooper, Barry Nelson, Mickey Safstrom, Ed Detwiler, Nancy Dehmlow, Gary Wendt, Michael McGuire, Jennifer Burrowes, Ray Scott, Debby Shellard. Excused: Andrew Lewis, Dick Conser.

The meeting was called to order at 7 p.m. by chairperson, Bill Cooper. Chairperson Cooper thanked Jennifer Burrowes for serving as recording secretary for the last two meetings.

The minutes of the September meeting were approved as read.

There was no **Executive Board Report** because that meeting was cancelled due to the lack of water in the church building.

Staff Reports

Andy Lewis – sent a report that included the following:

1. The choir will present the Bach *Magnificat* on Sunday, December 12. It is appropriate for the Advent season and will facilitate using most of our talented instrumentalists from the congregation. Anticipated cost: \$2500.
2. The Chancel Choir will sing the Faure *Requiem* on Good Friday of next year. Anticipated cost: \$3000 - \$4000, depending upon how many congregation musicians will be able to play in the orchestra. It should be noted that if all possible church instrumentalists are able to play, the cost for the Bach and the Faure would be about the same as the cost for the Mozart *Coronation Mass* last year.
3. An additional 10 music folders have been ordered. Cost: \$244.45.
4. The Pilgrim Chorus (men's choir) will sing on October 24. Krissie Geye is bringing her dance studio to the service to perform a liturgical dance while the chorus sings *The Prayer of the Children* by Kurt Bestor.
5. We are in need of more chairs and music stands for instrumentalists. We are looking for used ones because new ones are very expensive.
6. I am working with Elizabeth Ciccolini on collaborating with the PYF Singers on November 7th. (note item under New Business).

Debby Shellard – *The Primary Choir* (kdgn. – 2nd grade) will sing for the Oct. 10 worship service. *Voices of GCC* have also been rehearsing for the Pageant, Toys for Tots, and Christmas Eve service. It does not appear that the change in schedule for Sunday worship has affected the number of children participating in the children's choirs. The Board has already approved the purchase of microphones for the spring musical drama presented annually by the children's choirs. The *Shure System* will be ordered within a month and will be purchased using Nutting Fund monies.

Gary Wendt – The Bell Choir is rehearsing in preparation for the North Shore Choral Society concert on Nov. 21, 2010 and the Christmas Eve service. The North Shore Choral Society is making a donation of \$500 to the Bell Choir.

The electricity to half of the organ went out last week for a few days. This immediately reminds us of the lack of a holding account for this kind of organ maintenance and repair. The organ was restarted at a cost of \$450. The Board was, then, immediately faced with the problem

of where to find the funds to pay for this unexpected cost. In the past the Board has been told to use the GCC Capital Fund for such purposes, but we are uncertain whether this cost will reach a minimum required by this fund. In the meantime it was decided to utilize account #9654. Account #9670 cannot be used because it is overspent due to the purchase of instrumental scores.

Simple Gifts Concert Series 2010-2011

Michael McGuire reported that between 125 and 150 press releases had been prepared. Also letters and Simple Gifts brochures have been sent to 100 local churches. Also, a poster for the Belle Voce concert and glossy posters for the community for all concerts will be put in public places. Also, this year there will be, for the first time, response cards for attendees to give feedback on the concert and the Simple Gifts program. The Board asked Michael McGuire, Nancy Dehmlow, and Jennifer Burrowes to put together a budget for the Simple Gifts series. The promotion of these Simple Gifts programs would be aided by having email contact with the 100 churches.

New Business

GCC Long Term Goals. Bill Cooper, Chairperson, asked for additional ideas as to how the Music Board and its programs contribute to these goals. Many additional ideas were suggested to be added to the ones already suggested.

Financial support for PYF Singers – The purchase of music for this group (\$104) was charged by Pam Keckler to the Friends of Music Fund. Though we are uncertain where these funds should come from, The Board decided that at this time they should be charged to acct.#9666 rather than Friends of Music.

Chancel Choir inclusiveness – Nancy Dehmlow called to our attention that it is very difficult for new choir members to become acquainted and know the names of those in the choir. It was suggested that as well as introducing only the **new members** as they arrive, some method should be devised to let new members know the names of all the choir members, possibly with a picture directory.

Financial Reports

Ray Scott shared a summary report through August, 2010. The report was discussed by The Board. During this discussion the question was raised as to how we would pay for new choir robes which will be needed within the next few years. Replacing robes in the past has cost about \$10,000. Since the budget does not have an item that would cover this periodic expense, the possibility of raising some or all of the monies for this expense was suggested and discussed, but nothing was decided.

The meeting was adjourned at 8:30 p.m. with the Lord's Prayer.

NEXT MEETING: Wednesday, November 10, 2010 in room 201 at 7 p.m.

Minutes submitted on Wednesday, October 6, 2010 by Mickey Safstrom.

GLENVIEW COMMUNITY CHURCH PASTORAL CARE BOARD

Minutes of the October 12, 2010 meeting

The meeting was called to order by co-chair Barb Pollack at 7:10 pm

Present were; Tony Cucco, Barb Pollack, Carolyn Keller, Sally Hicks, Barbara Gundrum,

Kathy Riddell, Betsy Martin, Karen Aeschelman, Marilyn Belleau, Parrish Nurse

Barb Pollack presented the devotion by reading a poem, Slow Dance.

Flu Shots - Sally Hicks reported on the flu shot clinic of October 9, 2010, 71 people received a flu shot - Sally thanked all who helped with this successful endeavor

60+ Luncheon - a sign-up sheet was passed for volunteers to help with the Halloween themed luncheon on October 19 - Ellen Scholly will speak about the opening of the new Glenview Public Library the September luncheon was successful, and the topic was safety and fall prevention - thanks to those who helped with that event

Coffee Hour Schedule - PCB Dates - a sign up sheet for volunteers to work the coffee hour on October 17, 2010 was circulated

All Church Memorial Service - the Memorial service will be on November 7, 2010 at 3 p.m. Set-up will be at 2 p.m. and a sign up for bringing cookies and cider was passed around.

2011-2012 Pastoral Care Board - Barb Pollack asked (for Ann Deyne) which members would be returning to the board next year so new members can be found

Adult Education - Chris Callandra has asked that we be aware of the Adult Ed offerings and show our support by attending these Sunday 10:45 sessions

Marilyn Belleau announced that Susan Johnson will present Healing Touch information and demonstration, and will be offering healing touch once a month

Parrish Nurse - Marilyn Belleau urged members to spend time visiting with people who are receiving Alter Flowers. Marilyn will have a student parrish nurse working with her for a while - hopefully she will be able to attend our next meeting

Call to Care - Arden Courts will provide a short program demonstrating the difficulties of being an Alzheimers patient this mock demonstration will provide understanding of the patient's view point

There will be no Executive Board meeting

Other Business - Betsy Martin updated us on the progress of the upcoming American Girl Event. 80 girls have been practicing for the event which will raise monies for GCC and three charities - Common Thread, By the Hand, Glenview Youth Service. 730 tickets have been sold.

the meeting was closed with the Lord's Prayer and adjourned at 7:50

Next Board Meeting: Tuesday, November 9, 2010

Respectfully submitted, Barbara Gundrum

**GLENVIEW COMMUNITY CHURCH BOARD MINUTES
SERVICES & SACRAMENTS**

MEETING DATE/TIME/PLACE: Monday, October 11, 2010 at 7 p.m. in the Parlor

MEMBERS PRESENT: Cathy Ach, Dave Aki, Pam Asplund, Carolyn Brown, Mary Anne Peruchini, John Roth, Julie Tillman

MEMBERS EXCUSED: Steve Lindell, Colleen MacKimm, Carlton Olson, Bob Richter

MEMBERS ABSENT: Janice Lane

AD HOC MEMBERS PRESENT:

Opening Prayer

Minutes for the September 13th meeting were reviewed and approved

- **Report from our Minister, Pam Keckler**
 - Pam Keckler commended Dave Aki on the great work he is doing with the ushers.
 - After the last communion, Howard Roberts asked that the transept be served before the choir.
 - Pam Keckler provided a review of serving communion including a diagram for placement of bread and juice trays on the altar. This information to be included in the new procedures to be created by the board this year. Pam will also send words of serving to Carolyn Brown to also be included.
 - Cathy Ach reported a problem with juice containers sticking in the trays which made it hard – especially for older members to remove the containers from the trays. Also, some people are unsteady with passing the trays particularly when only a few people are seated in a pew. Dave Aki offered to instruct the ushers on communion Sundays to encourage members to fill in the pews.
 - Pam Keckler confirmed that this year's confirmation Sunday will be May 1st.

- **Executive Board Report**
 - Carolyn Brown reported that the EB meeting was cancelled due to construction on the street

- **Lector Report – no report**

- **Usher Report –**
 - Dave Aki reported that the head ushers meeting occurred and all but one head usher showed up. Six in the group are new which has caused Dave to recognize the need for a hand book i.e. more details on procedures,

**GLENVIEW COMMUNITY CHURCH BOARD MINUTES
SERVICES & SACRAMENTS**

diagrams for head users to reference. Creating the hand book will be this year's goal.

- Discussion about whether GCC has the best or most current defibrillators also occurred. One of the head ushers to provide more insight.

- **Next Communion 11-7-10**
 - We have 4 volunteers from the children's board who will assist us.
 - Six more volunteers needed. Colleen MacKimm, Mary Anne Peruchini, John Roth, Carolyn Brown and Julie Tillman offered to serve communion. Pam Asplund will be available to serve only if absolutely needed! Another server should be pursued. Steve Lindell and Janice Lane to handle juice prep and Carlton Olson to prepare bread. Mary Anne Peruchini to prepare altar.

- **Coffee Hour 11-14-10**
 - Pam Asplund volunteered to serve with her daughter, Sara assisting her. Cathy Ach offered to serve as backup if necessary. Carolyn Brown will greet members at the west entrance of the church.

- **Old Business**
 - One additional board member still needed
 - Pam Asplund to attend the new member meeting on Sunday, 10/17 from 3-5 pm.

- **New Business**
 - Homework for board is to review the communion procedures for discussion/revisions next meeting.

Closing Prayer

Meeting was adjourned by 8:00 pm.

Next Services & Sacraments Board Meeting:

Date: **Monday, November 8, 2010**; 7:00 p.m. in the Parlor.

Respectfully submitted,
Julie Tillman

STEWARDSHIP BOARD MINUTES
Glenview Community Church

MEETING TIME/DATEPLACE: Tuesday, Oct. 12, 7:00 pm in Room 7

Present: Steve Brown, Cindy Dailey, Scott Frerichs, Gretchen Grad, Margaret Lutz, Karen Patterson O'Brien, Sally Thuresson,

Absent Excused: Scott Brady, Larry Chandler, Jackie Seter

Absent Unexcused: John Tillman

- I. Devotion: Cindy Dailey performed the opening prayer.
- II. Larry Kemp, Guest at Meeting to receive income and expense figures from the Stewardship Board. John Tillman has given numbers for the Resource Development Committee.
 - 1) We have asked Larry to use the same SB budget expense figures shown 2010.
 - 2) Income from Rummage Sale and Pancake Breakfasts and other RDC activities to go to Operating Budget. An estimated total for 2010 is \$10,000. We project the same total for 2011.
 - 3) Income from American Girl go to Mission Outreach. At this point an unknown dollar amount distribution to: Youth Services – Glenview/Northbrook, Common Threads, By the Hand Club for Kids and an unknown activity via GCC through the children's programs.
 - 4) Celebration line item to be eliminated.
 - 5) Pledges
 - i. With 40% of pledges in it appears that we will not make our 100% goal, much less the increased 10%. We will wait for next week's pledge report prior to giving Larry Kemp an estimate.
 - ii. Larry is looking for permission to report 98% so they can start planning for 2011 budget including hopeful raises, etc.
 - iii. Last year's pledging units – 479 per Dale Wittenberg.
- III. **Thank you to Larry Kemp** for working with Tania to prepare the Stewardship Campaign message on the web site. The updated on-line form is now available. Sally Thuresson will request that the e-blast will now go out. Larry had to rebuild three computers, changed on-line pledge form. Sally waiting to hear from Tania on whether e-blast change went out.
- IV. **Pledge Update from Dale Wittenberg:** [Here is today's Stewardship campaign update....10/7/10](#)
Total of pledges received to 173 with a giving value of \$413,408.00. That compares to \$427,911.00 pledged by the same members for 2010... so on a YTD basis 2011 is still running at about 96.6% of 2010 pledges. We have lost several members.
Those 173 pledges break down as follows:
50 members (29%) have increased their pledge compared to 2010;
91 members (53%) have maintained their pledge at their 2010 level;
32 members (18%) have decreased their pledge compared to 2010.
- V. **Communication:**
 - 1) The Pledge-O-Meter artwork has been completed by Tania, ordered and will be in the Narthex and Transept shortly.
 - 2) We have glass case until 11/30/2010. Cindy Dailey to put a banner in the glass case.
 - 3) Pledge Forms can be found next to the glass show case, in the pews, in the rotating wooden racks in the Narthex & Transept.
 - 4) Thank you messages will appear in the Broadcaster & Bulletin.
 - 5) Cindy Dailey, Glass Case.
 - 6) Scott Brady, My Faith, My Church Broadcaster, Bulletin Article.
 - 7) Stewardship Board messages from the Pulpit: Margaret Lutz, Gretchen Grad, Scott Brady and John Tillman.
 - 8) Web update and E-blast: Sally Thuresson, Tania McCarthy & Larry Kemp
- VI. **Planned Giving Report:** Karen Patterson O'Brien, Scott Frerichs
 - 1) Karen Patterson will communicate with Jason Ornduff requesting Planned Giving literature.

VII. Resource Development Report:

- 1) **Pancake Breakfast**, October 31: 8:00 – 11:30. \$5.00 tickets
 - i. Sign Up to Sell tickets at coffee hour.
 - ii. John Tillman, Steve Brown & Dave Aki purchasing all ingredients.
 - iii. Sign up to help set up on Saturday, Oct. 30 starting at 9:30 am.
 - iv. Sign up to put together treat bags (pencils, erasers, stickers, candy) and prizes (taffy apples).
 - v. Sign up to help cook and clean up on Sunday, Oct. 31
 - vi. Prizes the kids who show-up in costume.
 - vii. Anyone wishing to help should contact Steve Brown or John Tillman.
 - 2) **American Girl:** Sally Thuresson
 - i. Sign Up to Help
 - ii. Count at 770. Saturday afternoon sold out. Looking to get to 800.
 - iii. Has helped get GCC name out in the community.
 - 3) **Picture “Test of Faith”** hanging on wall in Mayflower Room, outside Kitchen was painted by Jim Griffiths during Alward’s time.
 - i. Wait until spring to sell these.
 - ii. Pam Mers will give us cost and sale pricing.
 - 4) **Xmas tree lights** have been found. PYF and Boy scouts selling their Xmas items now.
 - i. Sell for \$5.00. In stores, \$18.00. Not in a box.
 - ii. Will sell during coffee hour in November and December.
 - iii. Sign up to sell:
 - 5) Melinda Krueger has offered to join RDC – (*Won’t she be surprised when we tell her that she will be in charge of Rummage sale!?*)
- VIII. **“MY FAITH, MY CHURCH” BROADCASTER/BULLETIN ARTICLES** - Once a Month (How GCC has affected personal faith journey.) Board suggests direction: Faith Journey @ GCC, Experiences at GCC, What Pledging means to me, What Sunday Worship means to me. All months October through May are filled.
- IX. **“DID YOU KNOW”** Awaiting a response from Membership if they are planning to do this project.
- X. Steward Board Events Related to the **Long Range Plan Goals – 2010**. Update for all planned 2010-2011 events reviewed and approved.
- XI. Executive Board
 - 1) Receive approval to sell Christmas lights.
- XII. **NAME TAGS:** The Stewardship Board believes having NAME TAGS for all who attend Sunday Service is a good idea. The Executive Board meeting was cancelled for last month so no consensus has been determined as of this date.
- XIII. **CAPITAL IMPROVEMENTS:** Need to walk building to work on this (January – February) when our Committee is not overwhelmed with work.
- XIV. I note in a 1/12/2010 Budget Summary that the Finance Board states **“Stewardship Resource Development Group special events revenue** and associated expenses to plan/communicate these events, with net revenue used **to accelerate 2009 Capital Reserve repayment.”** This was never the intent of the RDC or their resources. We intend these monies to strengthen the operating budget. The Stewardship Board and RDC wish me to present our position at the next Executive Board meeting.
 - 1) Margaret to make a statement at Exec. Board meeting next week.
- XV. **ADD TWO NEW Stewardship Board Members** – to replace Chris Jett-Rivard and Clark Ross.
- XVI. **CHURCH MEMBERSHIP – CLEAN LIST** – Bill Daily working on list (45 who do not respond to our pledge campaign, calls or mail follow up). Approx. 670 people on complete list, including members who pledge, donate, give time and talent only, or only attend or do not attend church.
- XVII. **Membership Board Request of other Boards to staff Membership Table.** Suggestions from SB: Now that there is only one service, Membership needs half the coverage from the original two services and perhaps should reconsider staffing both locations.
- XVIII. **New Member Orientation Class**, October 17 from 3-6 p.m. Gretchen Grad will represent the SB.

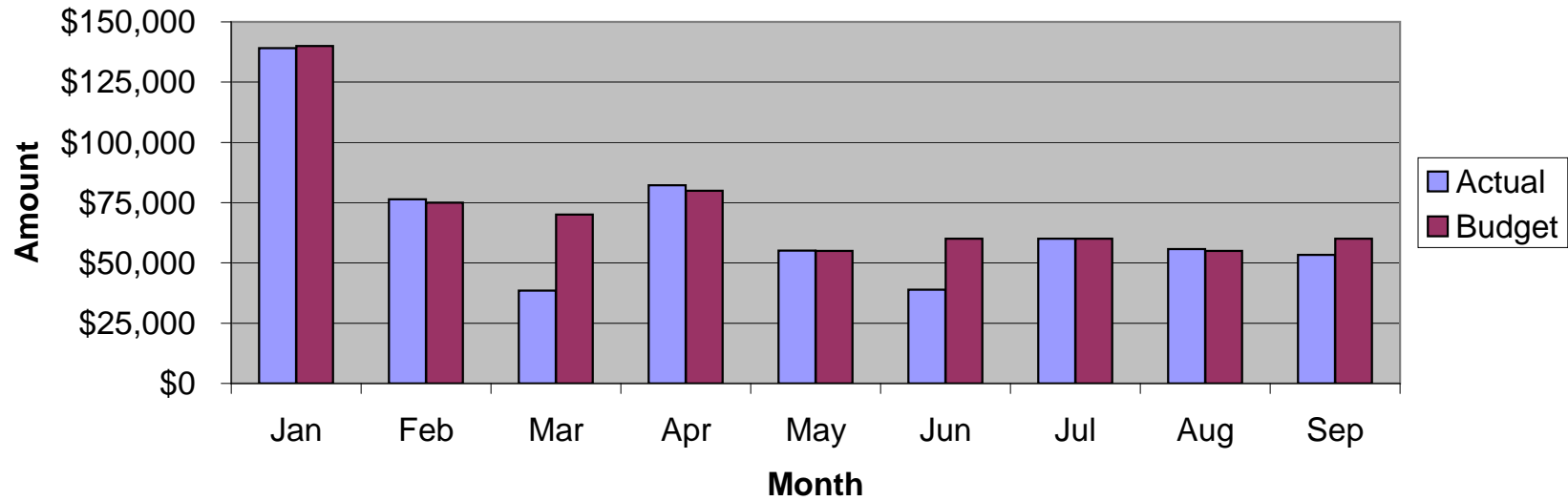
Close with the Lord’s Prayer

Next Meeting: Nov. 9, 7:00 pm, Room 7

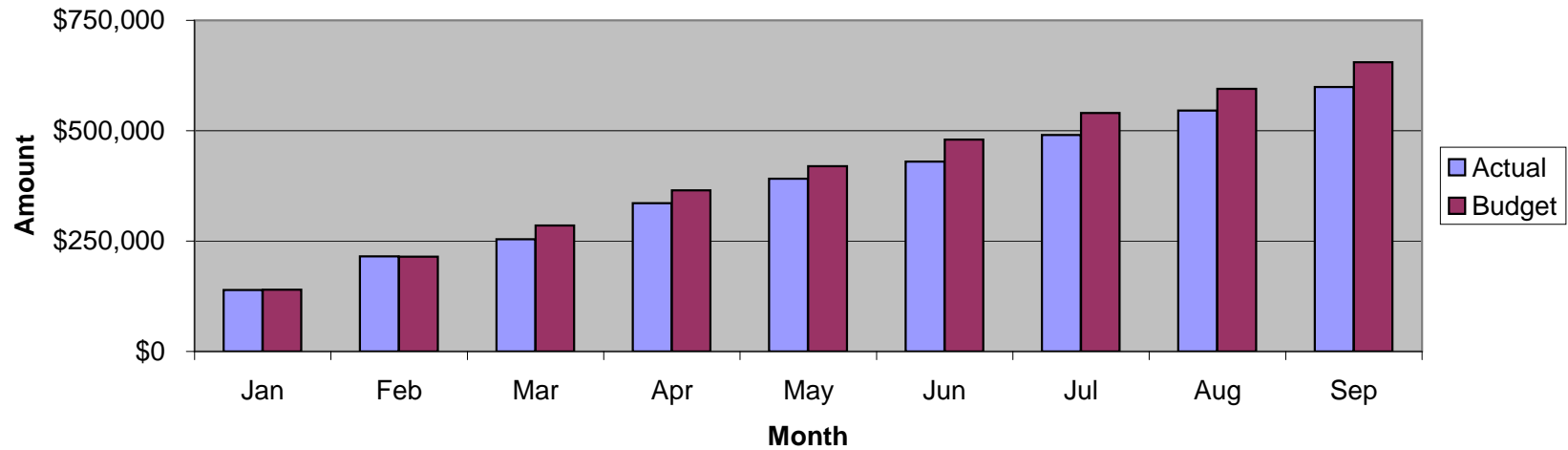
**Glenview Community Church
YTD Revenue Expense Summary**

	Sep-10	YTD	YTD	YTD	Notes
	Actual	Actual	Budget	Over/(Under)	General Note: Most revenue accounts and certain expenses have been seasonally adjusted.
				Budget	
Revenues					
Current Pledge Contrib	53,294	599,205	655,000	(55,795)	
Non-Pledge Contrib	3,031	41,499	33,000	8,499	
Pledge Overage	2,470	6,745	13,800	(7,055)	
Prior Year Pledges	-	9,950	10,000	(50)	
Loose Offerings	429	4,902	5,750	(848)	
Women's Assoc	-	10,000	7,500	2,500	
Fees & Nursery School	3,743	34,221	29,590	4,631	
Interest	6	51	325	(274)	
Housing Trust	-	2,979	4,100	(1,121)	
Endowment I	-	2,544	3,000	(456)	
Endowment II	1,407	7,001	7,550	(549)	
Mission Offering	-	8,617	10,600	(1,983)	
Special Events Income	-	8,695	7,500	1,195	
Total Revenues	64,381	736,409	787,715	(51,306)	
Expenses					
Pastoral	27,749	207,367	211,757	(4,390)	Primarily lower health insurance expense
Missions	7,798	78,799	80,782	(1,983)	
Children's Ministry	2,835	23,899	25,146	(1,247)	
Confirmation & Youth	2,868	24,288	24,278	10	
Pastoral Care	4,475	40,871	40,835	36	
Membership	26	450	1,805	(1,355)	
Adult Education	400	800	1,145	(345)	
Services & Sacraments	19	137	350	(213)	
Fellowship	-	(89)	515	(604)	
Music	7,719	67,335	67,354	(19)	
Stewardship	-	1,255	3,085	(1,830)	
General & Administrative	29,841	142,014	149,516	(7,502)	Primarily lower supply expenses
Church Property	15,787	197,466	219,710	(22,244)	Primarily lower utility expenses
Pageant	-	363	400	(38)	
Capital Reserve	2,322	20,898	20,898	-	
Total Expenses	101,839	805,852	847,576	(41,724)	
Net	(37,458)	(69,443)	(59,861)	(9,582)	
General Fund	(68,341)				
Capital Reserve	232,906				

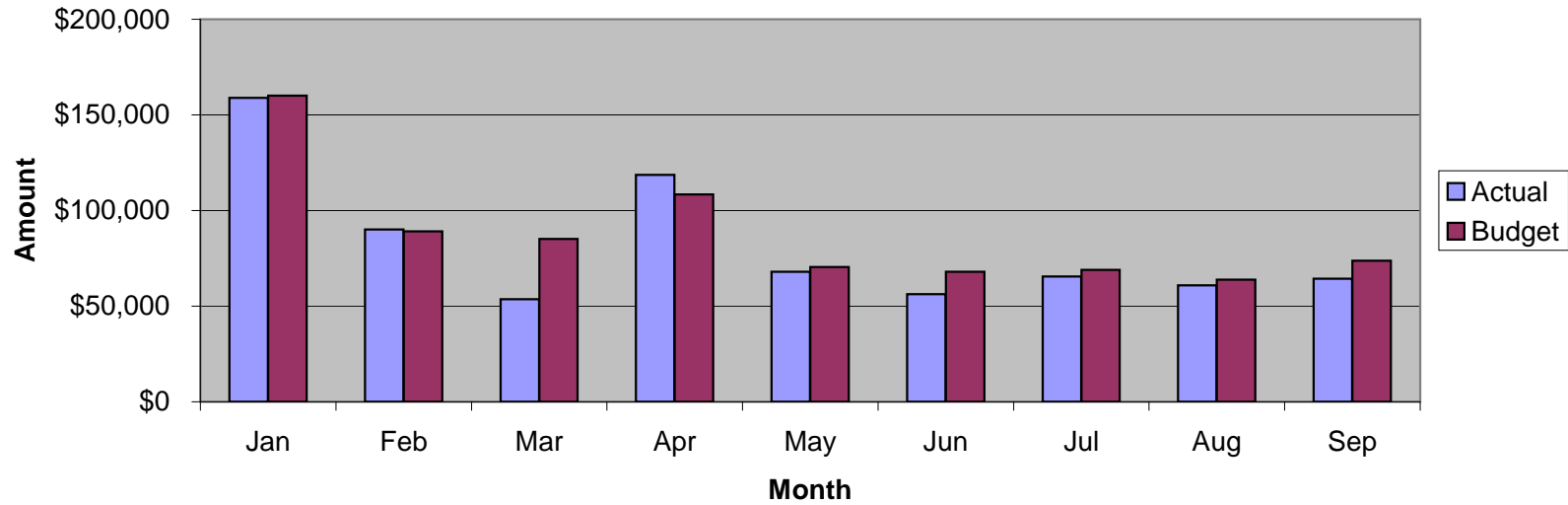
Monthly Pledges - Actual vs. Budget



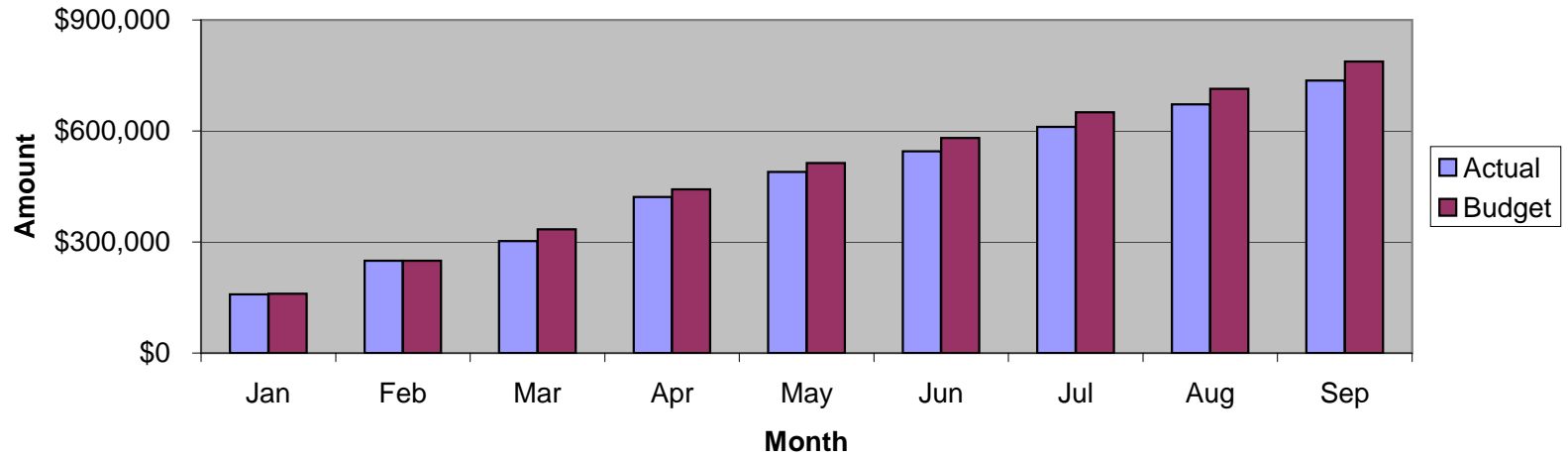
YTD Pledges - Actual vs. Budget



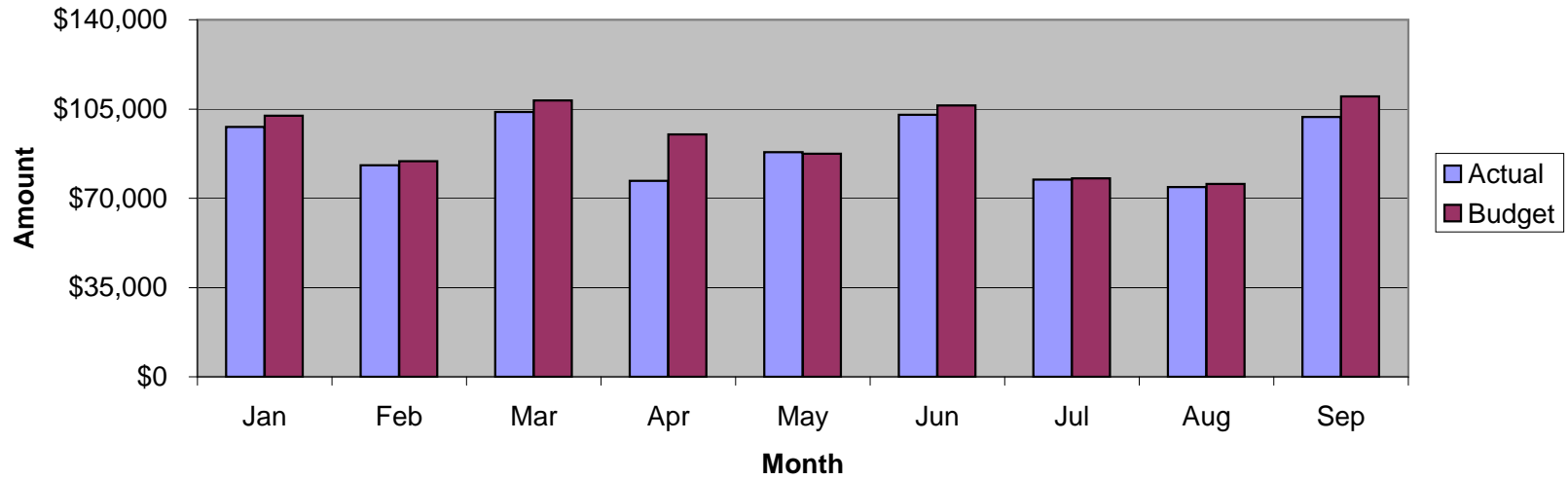
Monthly Revenue - Actual vs. Budget



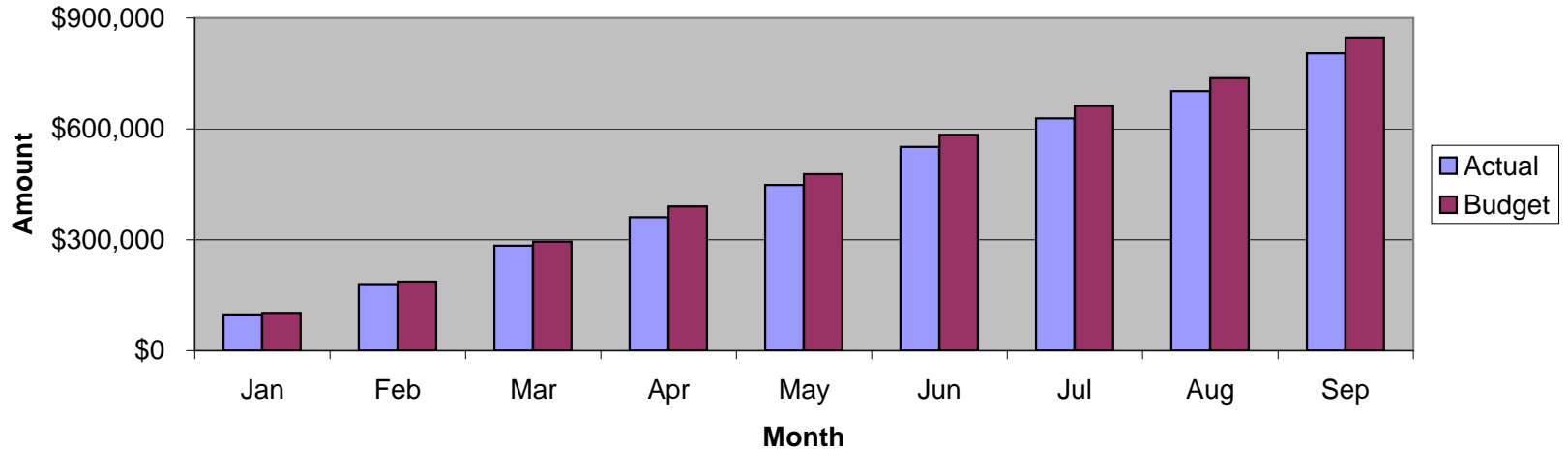
YTD Revenue - Actual vs. Budget



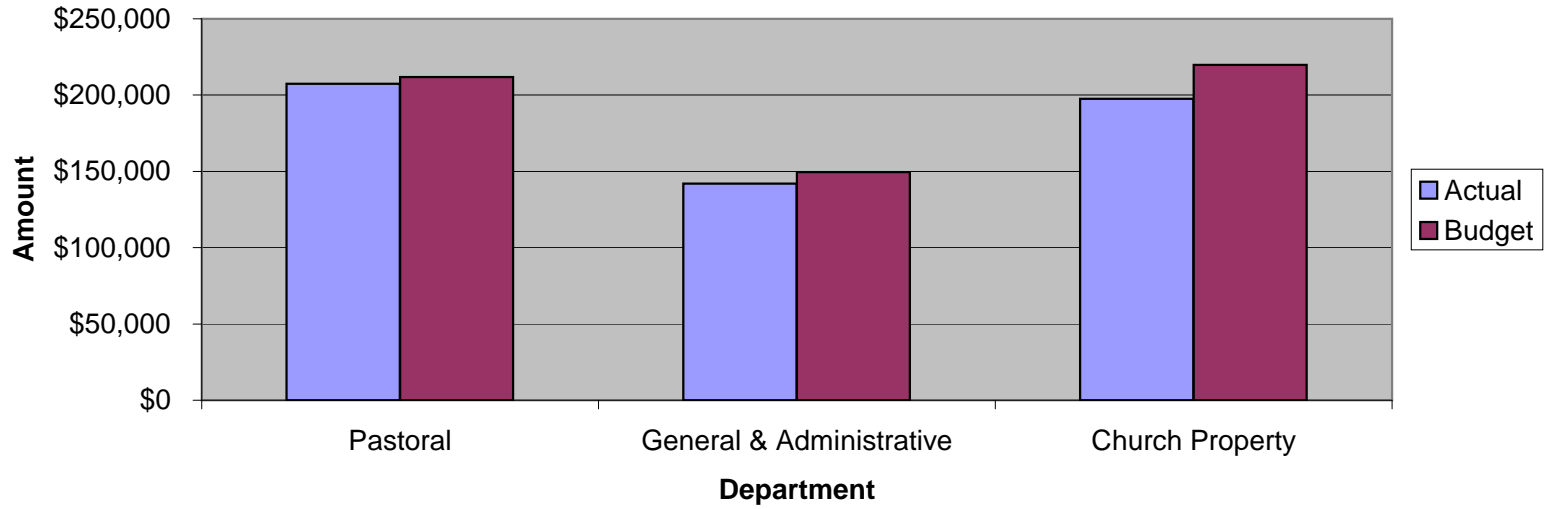
Monthly Expenses - Actual vs. Budget



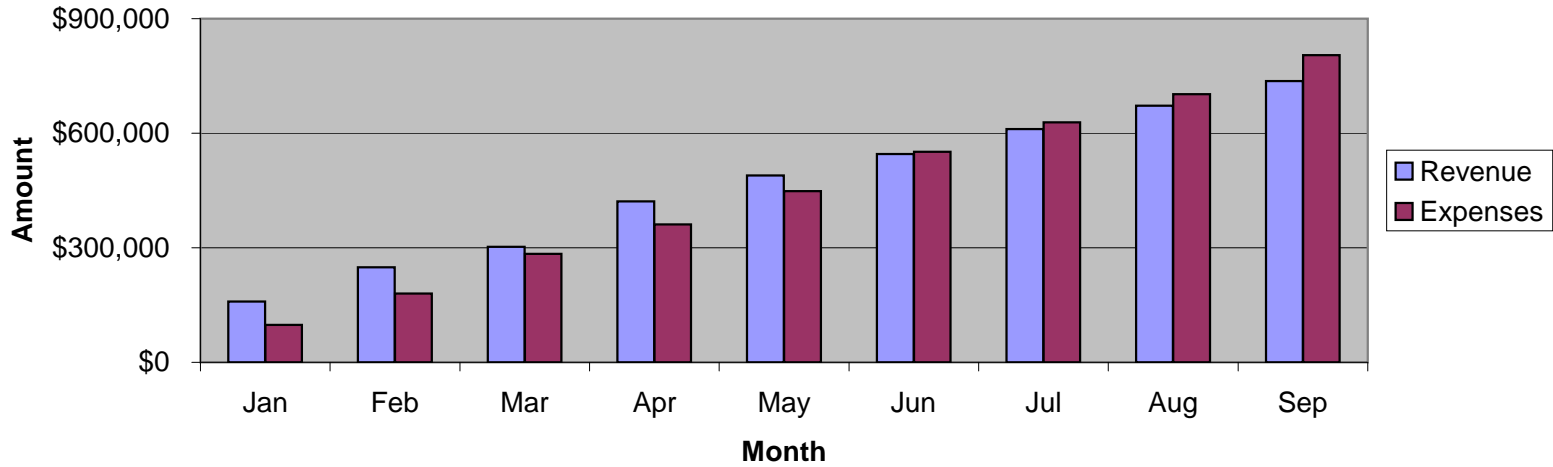
YTD Expenses - Actual vs. Budget



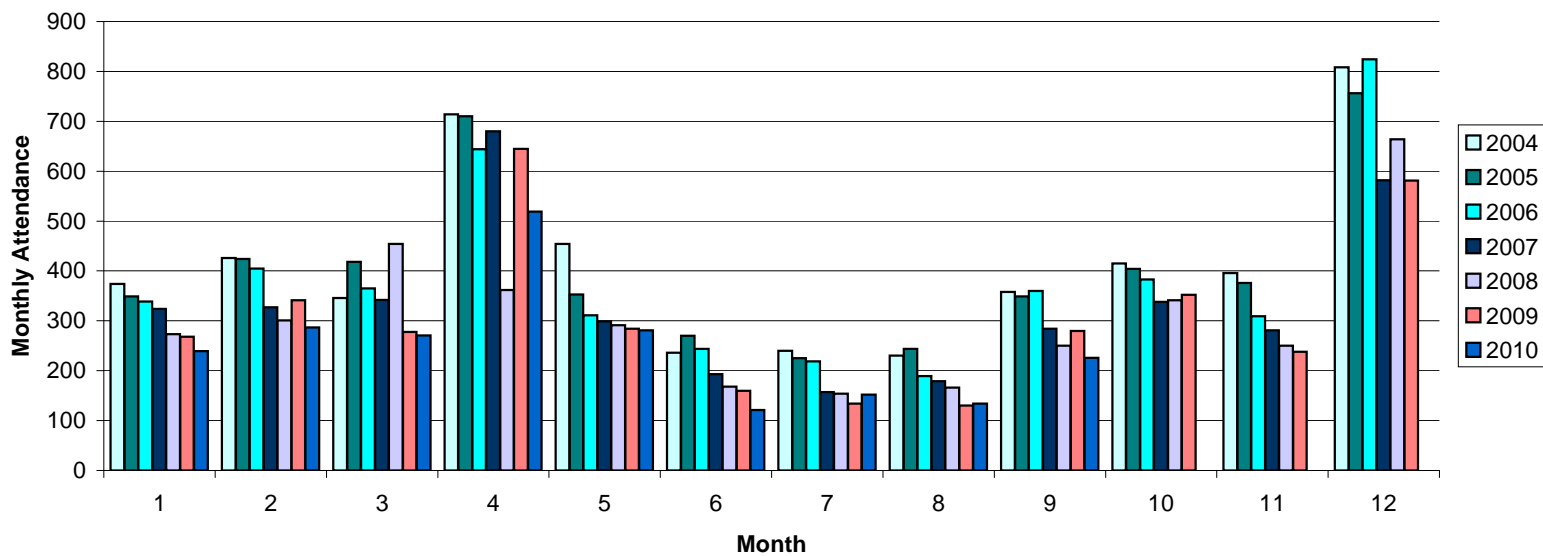
YTD Operations - Actual vs. Budget



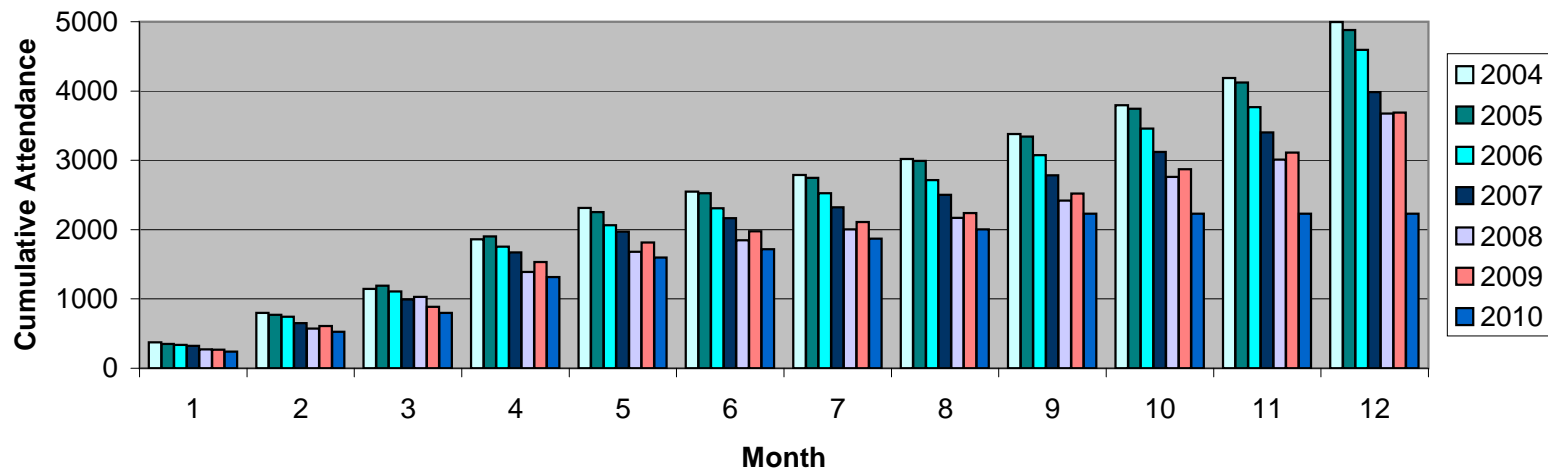
YTD Actual - Revenue & Expenses



Sunday Average Attendance - Monthly



Sunday Average Attendance - Cumulative



Glenview Community Church
 Analysis of Revenues & Expenses - Summary Portrait 2010
 September 2010

Accounts	MTD Actual (This Year)	MTD Budget (This Year)	YTD Actual (This Year)	YTD Budget (This Year)	YTD Actual (Last Year)	Annual Budget (This Year)
Revenues						
Total Revenues	\$64,381.02	\$73,680.00	\$736,409.06	\$787,715.00	\$873,311.94	\$1,150,615.00
Expenses						
Pastoral Expenses	\$27,748.92	\$31,583.00	\$207,367.27	\$211,757.00	\$294,833.28	\$266,039.00
Missions	\$7,798.00	\$7,798.00	\$78,799.25	\$80,782.00	\$80,556.50	\$118,582.00
Children's Ministry	\$2,834.92	\$2,979.00	\$23,899.45	\$25,146.00	\$23,953.65	\$34,208.00
Confirmation & Youth Ministry	\$2,868.17	\$3,435.00	\$24,287.57	\$24,278.00	\$24,320.32	\$34,598.00
Pastoral Care	\$4,475.37	\$4,545.00	\$40,871.44	\$40,835.00	\$40,041.32	\$54,504.00
Membership	\$26.10	\$265.00	\$450.19	\$1,805.00	\$10,317.43	\$2,600.00
Adult Education	\$400.00	\$185.00	\$800.00	\$1,145.00	\$1,000.00	\$1,700.00
Services & Sacraments	\$19.07	\$50.00	\$137.02	\$350.00	\$373.30	\$490.00
Fellowship	\$0.00	\$65.00	(\$88.90)	\$515.00	\$114.67	\$750.00
Music	\$7,719.42	\$7,299.00	\$67,334.51	\$67,354.00	\$51,874.14	\$89,321.00
General & Administrative	\$29,840.54	\$26,394.00	\$142,013.82	\$149,516.00	\$146,019.09	\$207,943.00
Stewardship	\$0.00	\$355.00	\$1,254.69	\$3,085.00	\$1,777.05	\$4,200.00
Church Property	\$15,786.59	\$22,725.00	\$197,465.61	\$219,710.00	\$207,333.64	\$291,205.00
Pageant	\$0.00	\$0.00	\$362.50	\$400.00	\$0.00	\$1,600.00
Capital Reserve	\$2,322.00	\$2,322.00	\$20,898.00	\$20,898.00	\$26,000.00	\$40,865.00
Long Range Plan Funds	\$0.00	\$0.00	\$0.00	\$0.00	\$0.00	\$0.00
Total Expenses	\$101,839.10	\$110,000.00	\$805,852.42	\$847,576.00	\$908,514.39	\$1,148,605.00
Net Total	(\$37,458.08)	(\$36,320.00)	(\$69,443.36)	(\$59,861.00)	(\$35,202.45)	\$2,010.00

Glenview Community Church
 Analysis of Revenues & Expenses - Detail Portrait 2010
 September 2010

Accounts	MTDActual (This Year)	MTD Budget (This Year)	YTD Actual (This Year)	YTD Budget (This Year)	YTD Actual (Last Year)	Annual Budget (This Year)
Revenues						
9105 - Current Pledge Contributions	\$53,294.17	\$60,000.00	\$599,205.01	\$655,000.00	\$702,075.65	\$896,005.00
9107 - Non-Pledge Contributions	\$3,031.00	\$4,500.00	\$41,499.00	\$33,000.00	\$41,936.62	\$60,000.00
9109 - Pledge Overage Contributions	\$2,470.34	\$3,000.00	\$6,745.00	\$13,800.00	\$19,104.00	\$55,000.00
9110 - Prior Year Pledge	\$0.00	\$0.00	\$9,950.00	\$10,000.00	\$36,076.03	\$10,000.00
9115 - Loose Offering	\$429.25	\$500.00	\$4,703.13	\$5,400.00	\$6,304.77	\$9,500.00
9124 - Church School Offering	\$0.00	\$50.00	\$198.93	\$350.00	\$135.76	\$500.00
9130 - Women's Association	\$0.00	\$0.00	\$10,000.00	\$7,500.00	\$13,100.00	\$10,000.00
9135 - Building Fees	\$0.00	\$750.00	\$11,762.00	\$7,150.00	\$6,535.00	\$9,960.00
9142 - Nursery School	\$3,743.11	\$3,740.00	\$22,458.66	\$22,440.00	\$25,093.66	\$35,200.00
9145 - Interest Income	\$6.10	\$40.00	\$51.47	\$325.00	\$428.57	\$450.00
9147 - Housing Trust Income	\$0.00	\$0.00	\$2,978.60	\$4,100.00	\$2,807.99	\$8,500.00
9155 - Endowment Income	\$0.00	\$0.00	\$2,003.83	\$3,000.00	\$0.00	\$5,500.00
9157 - Endowment Income II	\$1,407.05	\$1,100.00	\$7,541.38	\$7,550.00	\$8,070.39	\$10,000.00
9170 - Neighbors In Need	\$0.00	\$0.00	\$0.00	\$0.00	\$0.00	\$1,900.00
9175 - Thanksgiving	\$0.00	\$0.00	\$0.00	\$0.00	\$0.00	\$3,250.00
9180 - Christmas	\$0.00	\$0.00	\$200.00	\$0.00	\$0.00	\$9,250.00
9185 - Easter	\$0.00	\$0.00	\$6,978.25	\$8,750.00	\$9,765.50	\$8,750.00
9190 - One Great Hour of Sharing	\$0.00	\$0.00	\$1,439.00	\$1,850.00	\$1,878.00	\$1,850.00
9199 - Special Events Income	\$0.00	\$0.00	\$8,694.80	\$7,500.00	\$0.00	\$15,000.00
Total Revenues	\$64,381.02	\$73,680.00	\$736,409.06	\$787,715.00	\$873,311.94	\$1,150,615.00
Expenses						
Pastoral Expenses						
9302 - Salaries	\$8,272.34	\$8,272.00	\$74,476.53	\$74,448.00	\$95,196.84	\$99,268.00
9304 - Auto Expense	\$124.40	\$350.00	\$1,916.30	\$2,950.00	\$3,890.86	\$4,000.00
9306 - Expense Reimbursement	\$0.00	\$85.00	\$512.20	\$765.00	\$339.58	\$1,030.00
9308 - Annuities	\$6,503.77	\$6,515.00	\$26,015.08	\$26,015.00	\$34,993.75	\$26,015.00
9310 - Conferences / Continuing Educa	\$1,030.40	\$200.00	\$2,615.17	\$1,800.00	\$3,027.05	\$2,500.00
9312 - Senior Minister Allowance	\$0.00	\$100.00	\$729.97	\$425.00	\$211.33	\$750.00
9314 - Housing Allowance	\$7,212.84	\$7,213.00	\$64,915.56	\$64,917.00	\$93,837.87	\$88,554.00
9316 - Assoc. Minister Allowance	\$0.00	\$65.00	\$853.08	\$555.00	\$1,054.65	\$750.00
9382 - Insurance--Health	\$3,507.49	\$7,685.00	\$25,454.26	\$30,000.00	\$48,604.32	\$30,000.00
9384 - Social Security Add On	\$1,097.68	\$1,098.00	\$9,879.12	\$9,882.00	\$13,677.03	\$13,172.00
Total Pastoral Expenses	\$27,748.92	\$31,583.00	\$207,367.27	\$211,757.00	\$294,833.28	\$266,039.00
Missions						
9450 - Mission Offering	\$0.00	\$0.00	\$8,617.25	\$10,600.00	\$11,643.50	\$25,000.00
9454 - Missions	\$7,798.00	\$7,798.00	\$70,182.00	\$70,182.00	\$68,913.00	\$93,582.00
Total Missions	\$7,798.00	\$7,798.00	\$78,799.25	\$80,782.00	\$80,556.50	\$118,582.00
Children's Ministry						
9464 - Salaries-CM	\$2,317.05	\$2,317.00	\$19,748.85	\$19,749.00	\$20,280.16	\$26,700.00
9466 - SS-CM	\$177.25	\$177.00	\$1,510.75	\$1,512.00	\$1,551.40	\$2,043.00
9468 - Spiritual Formation	(\$134.38)	\$145.00	\$431.67	\$1,160.00	\$729.76	\$1,600.00
9472 - Teacher Training & Appreciation	\$0.00	\$0.00	\$0.00	\$365.00	\$168.59	\$365.00
9476 - CradleToddler Supplies	\$0.00	\$50.00	\$0.00	\$350.00	\$439.87	\$500.00
9488 - Fellowship	\$0.00	\$60.00	\$157.69	\$420.00	\$261.94	\$600.00
9490 - Education & Spiritual Formation	\$0.00	\$160.00	\$1,002.60	\$1,120.00	\$35.12	\$1,700.00
9494 - Mission & Outreach	\$0.00	\$20.00	\$247.89	\$110.00	\$86.81	\$150.00
9496 - Childcare	\$475.00	\$50.00	\$800.00	\$360.00	\$400.00	\$550.00
Total Children's Ministry	\$2,834.92	\$2,979.00	\$23,899.45	\$25,146.00	\$23,953.65	\$34,208.00
Confirmation & Youth Ministry						
9526 - Salaries-CY	\$2,600.80	\$2,601.00	\$18,205.60	\$18,205.00	\$17,675.00	\$26,008.00
9528 - SS-CY	\$198.96	\$199.00	\$1,392.72	\$1,393.00	\$1,352.12	\$1,990.00
9530 - Jr High - Confirmation	\$0.00	\$165.00	\$1,838.56	\$1,340.00	\$1,618.14	\$1,850.00
9532 - Jr High - Social	\$68.41	\$25.00	\$158.39	\$175.00	\$301.64	\$250.00
9536 - Sr High - Education	\$0.00	\$195.00	\$1,559.11	\$1,415.00	\$1,774.23	\$2,000.00
9538 - Sr High - Social	\$0.00	\$250.00	\$1,133.19	\$1,750.00	\$1,599.19	\$2,500.00
Total Confirmation & Youth Ministry	\$2,868.17	\$3,435.00	\$24,287.57	\$24,278.00	\$24,320.32	\$34,598.00
Pastoral Care						
9550 - Salaries-PN	\$4,475.37	\$4,475.00	\$40,278.33	\$40,275.00	\$39,488.58	\$53,704.00
9552 - Pastoral Care Board	\$0.00	\$70.00	\$593.11	\$560.00	\$552.74	\$800.00
Total Pastoral Care	\$4,475.37	\$4,545.00	\$40,871.44	\$40,835.00	\$40,041.32	\$54,504.00

September 2010

Accounts	MTDActual (This Year)	MTD Budget (This Year)	YTD Actual (This Year)	YTD Budget (This Year)	YTDActual (Last Year)	Annual Budget (This Year)
Membership						
9572 - Salaries-Mbr	\$0.00	\$0.00	\$0.00	\$0.00	\$9,252.00	\$0.00
9574 - SS-Mbr	\$0.00	\$0.00	\$0.00	\$0.00	\$480.36	\$0.00
9576 - Membership	\$26.10	\$265.00	\$450.19	\$1,805.00	\$585.07	\$2,600.00
Total Membership	\$26.10	\$265.00	\$450.19	\$1,805.00	\$10,317.43	\$2,600.00
Adult Education						
9602 - Program	\$400.00	\$175.00	\$800.00	\$1,075.00	\$1,000.00	\$1,600.00
9614 - Miscellaneous	\$0.00	\$5.00	\$0.00	\$35.00	\$0.00	\$50.00
9616 - Literature & Library	\$0.00	\$5.00	\$0.00	\$35.00	\$0.00	\$50.00
Total Adult Education	\$400.00	\$185.00	\$800.00	\$1,145.00	\$1,000.00	\$1,700.00
Services & Sacraments						
9624 - Sacred Services	\$19.07	\$50.00	\$137.02	\$350.00	\$373.30	\$490.00
Total Services & Sacraments	\$19.07	\$50.00	\$137.02	\$350.00	\$373.30	\$490.00
Fellowship						
9636 - Special Functions	\$0.00	\$50.00	(\$88.90)	\$410.00	(\$42.00)	\$600.00
9640 - Miscellaneous	\$0.00	\$15.00	\$0.00	\$105.00	\$156.67	\$150.00
Total Fellowship	\$0.00	\$65.00	(\$88.90)	\$515.00	\$114.67	\$750.00
Music						
9648 - Salaries-Music	\$5,921.89	\$5,944.00	\$49,678.35	\$49,837.00	\$48,187.86	\$67,669.00
9650 - SS-Music	\$453.03	\$455.00	\$3,800.40	\$3,812.00	\$3,686.28	\$5,177.00
9652 - General - Instrumentalists	\$0.00	\$0.00	\$5,472.50	\$5,150.00	\$4,221.20	\$5,150.00
9654 - General - Organ & Piano Care	\$324.00	\$500.00	\$2,819.00	\$4,325.00	\$2,139.00	\$5,825.00
9656 - General - Cleaning Robes	\$0.00	\$35.00	\$245.00	\$315.00	\$0.00	\$450.00
9660 - General - Sub. Organist	\$175.00	\$90.00	\$975.00	\$780.00	\$950.00	\$1,050.00
9666 - Chancel Choir - Music	\$316.49	\$0.00	\$526.20	\$250.00	\$153.18	\$250.00
9668 - Chancel Choir - Misc.	\$0.00	\$90.00	\$250.00	\$310.00	\$177.30	\$1,100.00
9670 - Organ Music	\$214.70	\$45.00	\$851.07	\$365.00	\$334.32	\$500.00
9772 - Bell Choir - Music	\$314.31	\$70.00	\$1,373.69	\$630.00	\$5,492.69	\$850.00
9780 - Children's Choir - Music	\$0.00	\$70.00	\$683.30	\$630.00	\$144.94	\$850.00
9782 - Children's Choir - Misc.	\$0.00	\$0.00	\$0.00	\$0.00	\$175.06	\$0.00
9784 - Copyright Expenses	\$0.00	\$0.00	\$660.00	\$450.00	\$646.90	\$450.00
9790 - Music Transfer	\$0.00	\$0.00	\$0.00	\$0.00	(\$14,434.59)	\$0.00
Total Music	\$7,719.42	\$7,299.00	\$67,334.51	\$67,354.00	\$51,874.14	\$89,321.00
General & Administrative						
9822 - Postage (except B'dcaster)	\$345.00	\$650.00	\$4,510.01	\$5,750.00	\$6,283.12	\$7,700.00
9830 - Social Security	\$589.73	\$590.00	\$5,307.57	\$5,307.00	\$5,948.78	\$7,077.00
9832 - Office Staff Salaries	\$7,708.83	\$7,709.00	\$69,379.47	\$69,379.00	\$78,053.80	\$92,506.00
9834 - Payroll Service	\$415.53	\$350.00	\$3,766.66	\$3,500.00	\$3,240.98	\$4,700.00
9836 - Telephone	\$431.31	\$700.00	\$4,616.60	\$5,900.00	\$6,147.31	\$8,000.00
9838 - Stationery & Supplies	\$312.05	\$1,000.00	\$4,886.51	\$9,000.00	\$9,954.58	\$12,000.00
9840 - Equip. Maintenance/ Repair	\$705.00	\$1,550.00	\$11,372.73	\$13,950.00	\$13,514.51	\$18,700.00
9842 - Broadcaster	\$0.00	\$315.00	\$2,891.33	\$2,835.00	\$2,710.63	\$3,800.00
9844 - Financial Review	\$0.00	\$0.00	\$0.00	\$0.00	\$0.00	\$10,000.00
9846 - Communications/Promotions	\$0.00	\$125.00	\$457.00	\$1,050.00	\$1,162.50	\$1,400.00
9848 - Kitchen	\$0.00	\$125.00	\$1,778.81	\$1,125.00	\$1,192.76	\$1,500.00
9850 - Insurance--Prop/Casualty/Work	\$17,629.25	\$13,000.00	\$30,373.10	\$29,200.00	\$16,880.95	\$37,200.00
9852 - Miscellaneous	\$0.00	\$40.00	\$256.54	\$300.00	\$50.00	\$500.00
9854 - Office Equipment Purchase	\$1,598.00	\$190.00	\$1,959.07	\$1,710.00	(\$129.99)	\$2,260.00
9855 - Executive Board Expenses	\$17.44	\$0.00	\$91.17	\$0.00	\$648.96	\$0.00
9856 - Bank Fees	\$88.40	\$50.00	\$367.20	\$1,000.00	\$360.20	\$600.00
Total General & Administrative	\$29,840.54	\$26,394.00	\$142,013.32	\$141,916.00	\$146,019.09	\$207,943.00
Stewardship						
9802 - Offering Envelopes	\$0.00	\$40.00	(\$110.00)	\$325.00	\$998.59	\$450.00
9803 - Stationery	\$0.00	\$150.00	\$90.00	\$1,350.00	\$459.26	\$1,800.00
9804 - Postage	\$0.00	\$85.00	\$0.00	\$0.00	\$319.20	\$950.00
9810 - Miscellaneous	\$0.00	\$80.00	\$1,274.00	\$720.00	\$0.00	\$1,000.00
Total Stewardship	\$0.00	\$355.00	\$1,254.00	\$5,395.00	\$1,777.05	\$4,200.00
Church Property						
9862 - Facility Staff-Salaries	\$10,559.58	\$10,950.00	\$97,885.25	\$98,075.00	\$107,742.98	\$130,925.00
9863 - Facility Staff - Overtime expense	\$12.00	\$200.00	\$1,593.00	\$1,250.00	\$0.00	\$2,500.00
9864 - Social Security	\$808.73	\$850.00	\$7,610.13	\$7,610.00	\$7,746.41	\$10,160.00
9868 - Audio/Video/Telephonics	\$0.00	\$0.00	\$842.00	\$0.00	\$47.48	\$0.00

late: 10/11/2010
 -ime : 3:56:43 PM

Glenview Community Church
 Analysis of Revenues & Expenses - Detail Portrait 2010
 September 2010

Accounts	MTDActual (This Year)	MTD Budget (This Year)	YTD Actual (This Year)	YTD Budget (This Year)	YTDActual (Last Year)	Annual Budget (This Year)
9870 - Electricity	\$1,698.12	\$2,800.00	\$17,029.47	\$20,100.00	\$18,688.32	\$27,000.00
9872 - Water	\$0.00	\$850.00	\$1,534.54	\$2,600.00	\$1,607.72	\$3,500.00
9874 - N. I. Gas	\$129.83	\$200.00	\$11,265.41	\$21,600.00	\$12,320.19	\$26,600.00
9876 - HVAC Repair & Maintenance	\$0.00	\$800.00	\$11,356.19	\$7,200.00	\$2,037.17	\$10,000.00
9878 - Building Repair and Maintenance	\$768.09	\$2,400.00	\$22,094.18	\$21,000.00	\$19,638.78	\$29,000.00
9880 - Maintenance Contracts	\$1,376.60	\$3,300.00	\$14,432.27	\$30,000.00	\$31,825.54	\$40,000.00
9882 - Scavenger	\$365.63	\$375.00	\$3,506.21	\$3,375.00	\$3,252.44	\$4,500.00
9884 - Furn., Fixt., Equip. Purchase	\$68.01	\$0.00	\$7,774.69	\$5,500.00	\$2,426.61	\$7,020.00
9885 - Non-contract Landscaping	\$0.00	\$0.00	\$1,299.38	\$0.00	\$0.00	\$0.00
Total Church Property	\$15,786.59	\$22,725.00	\$197,465.61	\$219,710.00	\$207,333.64	\$291,205.00
Pageant						
9912 - Pageant	\$0.00	\$0.00	\$362.50	\$400.00	\$0.00	\$1,600.00
Total Pageant	\$0.00	\$0.00	\$362.50	\$400.00	\$0.00	\$1,600.00
Capital Reserve						
9910- Capital Reserve Expense	\$2,322.00	\$2,322.00	\$20,898.00	\$20,898.00	\$26,000.00	\$40,865.00
Total Capital Reserve	\$2,322.00	\$2,322.00	\$20,898.00	\$20,898.00	\$26,000.00	\$40,865.00
Total Expenses	\$101,839.10	\$110,000.00	\$805,852.42	\$847,576.00	\$908,514.39	\$1,148,605.00
Net Total	(\$37,458.08)	(\$36,320.00)	(\$69,443.36)	(\$59,861.00)	(\$35,202.45)	\$2,010.00

Glenview Community Church
 Balance Sheet - Summary
 September 2010

Accounts

Assets

Current Assets

Cash

1010 - Operating Account	\$177,870.24	
1200 - Special Petty Cash Fund	<u>\$1,000.00</u>	

Total Cash \$178,870.24

Investments

1110 - Housing Trust	\$410,838.00	
1120 - Merrill Lynch Govt. MF	\$129,316.42	
1130 - Nursery School Vanguard	\$95,264.92	
1140 - Romeiser Trust Account	\$176,401.00	
1160 - Endowment	\$140,632.00	
1170 - Wm. Blair Managed Cash	\$300,022.61	
1180 - Nursery School GS8 CD#323510	\$25,692.23	
1185 - Endowment Fund II	\$518,443.26	
1190 - Nursery School GSB CD#323512	<u>\$31,269.10</u>	

Total Investments \$1,827,879.54

Prepaid Expenses \$225.60

Total Current Assets \$2,006,975.38

Fixed Assets

1770 - Church Land	\$100,126.50	
1790 - Church Garage & Contents	\$10,074.00	
1800 - Church Building	\$5,430,585.00	
1810 - Church Furnishings	\$426,130.00	
1815 - Office Equipment	\$91,458.00	
1816 - Art & Music Collections	\$50,400.00	
1817 - Organ	\$896,000.00	
1820 - Canoes	\$1,200.00	
1825 - Accumulated Depreciation	<u>(\$742,695.00)</u>	

Total Fixed Assets \$6,263,278.50

Total Assets \$8,270,253.88

Liabilities, Fund Principal, & Restricted Funds

Liabilities Withholding

Taxes

2900 - Withholding #4038	\$525.00	
--------------------------	----------	--

Total Withholding Taxes \$525.00

Fixed Assets

0001 - Represented by Fixed Assets	<u>\$6,263,278.50</u>	
------------------------------------	-----------------------	--

Total Fixed Assets \$6,263,278.50

Total Liabilities

\$6,263,803.50

Fund Principal

0002 - Beginning Balance-General Fund	\$1,102.69	
---------------------------------------	------------	--

Excess Cash Received	<u>(\$69,443.36)</u>	
----------------------	----------------------	--

Total Fund Principal and Excess Cash Received (\$68,340.67)

Restricted Funds

Total Temporarily Restricted Total \$828,814.04

Permanently Restricted Total \$1,245,977.01

Restricted Funds \$2,074,791.05

Total Liabilities, Fund Principal, & Restricted Funds \$8,270,253.88