

EXECUTIVE BOARD AGENDA - MAY 20, 2008

- I. Opening Prayer - Don Clark
- II. Moderator's Moment - Don Clark
- III. Clergy Comment - Howard Roberts, Pam Keckler, Sally Iberg
- IV. * Consent Agenda - Don Clark
 - A. Executive Board Minutes
 - B. Minutes/Reports from Ministers, Boards, and Others
 - C. Requests: Resale shop Re-usable Bags 6/1, 6/8
- V. Boards
 - A. Finance
 - 1. Financial Report - Rob Hevey
 - *2. Investment Manager - Steve Morgan
 - *B. Fellowship/Membership Boards: Rally Sunday
 - *C. Properties
 - 1. Plymouth Room air conditioning
 - 2. First floor refurbishing and abatement
- VI. Committees/Task Forces
 - A. Leadership Committee - Tom Amos
 - 1. Board Nominees
 - B. Planning Committee - Don Clark
 - *1. Constitution and Bylaws
 - 2. Staffing and Long Range Planning
 - C. PMRC - Sally Thuresson
 - *1. Employee Handbook
 - 2. Summary of Staff Conversations
- VII. Other Items
 - A. Attendance
- VIII. Congregational Comment
- IX. Closing Communion and Prayer

ANNUAL MEETING: MAY 27, 7:30 p.m.
NEXT EXECUTIVE BOARD MEETING: TBD
LEADERSHIP RETREAT: AUGUST 22-23

* Indicates item that may require Executive Board vote or other action.

CONSENT AGENDA

**MINUTES OF THE EXECUTIVE BOARD
GLENVIEW COMMUNITY CHURCH
APRIL 22, 2008**

A silent roll was taken and recorded by the Church Clerk.

Present: Howard Roberts, Pam Keckler, Don Clark, Tom Amos, Sally Thuresson, Rob Hevey, Beryl Bills, Terry Adams, Barbara Bond, Scott Decker, MJ Detwiler, Sandra Frantz, Larry Kemp, Lloyd Bettis, John Clonts, Constance Filling, Nina Fockens, Sarah Koloms, Susan Mann, Steve Morgan, Fran Oldham, Karen Ornduff, Jill Ruter, Mark Sawires, Tracy Sawires, Barbara Schwarting + guests: Peter Grant, Blanche Hanson, Margaret Lutz, Jane Sanderson, Jan Valkenaar.

Excused: Sally Iberg, Bill Dailey, John Estey.

- I. The meeting was called to order** in Room 201 at 7:00 p.m. by Moderator, Don Clark. The meeting was opened with reflective readings given by Constance Filling.

II. Clergy Comments

Complete reports from Howard Roberts, Pam Keckler, and Sally Iberg are included in the Executive Board Packet of April 22, 2008.

Additional comments of note from Howard Roberts focused on the number and importance of the programs and ministries of GCC which are not always visible but are out in the open at certain times of the year. Pam Keckler shared steps which are being taken to grow youth programming; presented for view a parament created by Cailey Hinz for use on the PYF alter; and, asked Board members to respond to the statement..."I love my church because..." for use in the Broadcaster.

III. Consent Agenda

- A. Executive Board Minutes of the March 18, 2008, meeting.
- B. Minutes/Reports from Ministers, Boards, and Others
- C. Requests from the following: Hands of Peace to complete a funds solicitation using the *Broadcaster* mailing list; permission to hold a car wash as part of Tyler Ellis' Boy Scout Eagle project.

Discussion and comment:

- Music Board Minutes: discussion centered on the appropriateness and intent of the Music Board with respect to the following action. *"The Board also reviewed, edited, and approved an article for the Broadcaster and the worship bulletin that explains the need for additional funds in order to continue the music program at its present level. It invites contributions in the music envelopes which will be included with the April 30 Broadcaster and will be available in the pew racks on April 27 and May 4."* Following discussion, a motion was made to allow the Music Board to proceed as outlined. The motion was defeated 14 to 12. A second motion was made allowing the Music Board to place music funds envelopes in the pews on a single Sunday (May 4) and to promote the funds appeal in the *Broadcaster* and Church Bulletin without reference to budgetary constraints. The motion passed.
- Stewardship Board Minutes: Clarification was sought with respect to the intent to publish the names of individuals who pledged in 2008 and the perception stated that most Executive Board members thought it was a *"good idea"* ...a statement viewed by some Executive Board members to be in conflict with the perceptions reported in the March 18, 2008, Executive Board minutes. Following discussion, a motion was made and seconded to exclude the Stewardship Board minutes from the consent agenda. The motion was defeated by a vote of 8 for and 17 against.
- Properties Board Minutes: Susan Mann, Music Board chair, questioned the accuracy of the statement *"The Music board did not want the use of the Nutting Fund to be used on the physical plant."* This statement needs to be clarified or corrected.
- Executive Board minutes: an amendment to reflect the presence of Barbara Bond at the March 18 meeting; correct the room location (Plymouth Room rather than the Founders Room); and, correction of Standing Committee name from Technical Committee to Technology Committee.

A motion was made, seconded, and passed to approve the Consent Agenda with the additions and corrections noted.

IV. Boards

- A. Stewardship – Lloyd Bettis, Stewardship Board chair, presented an analysis of the 2008 Campaign which closed March 31. (A copy is attached). As of April 3, 2008, 506 pledges totaling \$1,027,386 have been received. Of the 506 pledges received, 43% are new or at an increased level over 2007; two-fifths (40%) are at the same pledge amount; and, 17% are lower than one year ago. The majority of pledges (78%) were received in the first two months of the campaign and represents 71% of the pledged dollars. The top tenth of the pledges (50 pledging units) accounts for 47% of the total dollars pledged.

Lloyd also outlined initial plans for the 2009 campaign which may include a) education relative to the concept of pledging and the importance of pledging at GCC; b) publishing names of pledgers, with the pledger's permission; c) greater use of the Internet for educating, and as a means both for pledging and paying pledges; and, d) offering Boards an opportunity to speak out about their programs and challenges faced with current revenues. Some Board members again expressed concerns in particular with the publishing of pledger's names.

- B. Finance Report – Rob Hevey, Church Treasurer, stated that for the month of March, 2008 total current pledge income of \$91,359 exceeded the March MTD budgeted contributions (\$90,000) due to the reclassification of a \$25,000 gift from non-pledge to pledge revenue. Additional revenue sources exceeding the MTD budget were building fees (\$1,825 over). March expenses were unfavorable to the budget due primarily to facility staff salaries, postage, and stationary and communications expenses. For the month of March, total revenues exceed total expenses by \$783.
- C. Fellowship/Membership Boards: John Clonts, Membership Board Chair, offered for consideration having only one service on Rally Sunday. Board chairs were asked to discuss this with their board members. Further discussion was tabled until the May Executive Board meeting.
- D. Properties Board: Chair Mark Sawires reviewed the previously approved plan and updated expenses for completing asbestos abatement and carpet replacement in the following areas all located on the first floor: hallway, narthex landing and stairs, library, parlor, and toddler room. The initial proposal for carpet replacement and asbestos abatement was approved at the June 26, 2007, Executive Board meeting at a cost of \$35,000, with funds to be transferred from the General Fund to the Capital Reserve Fund. Following discussion, a motion was made, seconded and passed with one opposition to accept the updated floor replacement proposal at a cost not to exceed \$46,000. All invoices for this project will be paid from the Capital Reserve Fund account, following the transfer of \$46,000 from the General Fund to the Capital Reserve Fund.

Mark presented a proposal from the Women's Association/Resale Shop to install a four-ton air conditioner with a fresh air distribution/exchange system in the Plymouth Room. Expense of the system would be bourn by the Women's Association; maintenance and electricity expenses will be paid for by Glenview Community Church. A final proposal and cost estimates will be presented at the May Executive Board meeting.

V. Committees/Task Forces

- A. Leadership Committee – Tom Amos reported the following nominees for election at the Annual Meeting as Members at Large: Susan Mann (1 year term) and David Aki, Judy Fellingham, Pam Riedy, and Mark Sawires, each for a two year term.

Tom announced the following open meetings to begin to discuss the listed issues:

- Inclusive language: May 12 at 7:00 pm
- Number of Sunday services: May 19 at 7:00 pm

Meetings will continue in the fall. Representatives from each of the Boards are encouraged to attend or Tom will attend a specific Board to discuss the issue.

- B. Planning Committee – Don Clark indicated that those comments and suggestions received on the revised Constitution and Bylaws documents were processed.
- Input was sought from Board members present on the following changes: a) increasing from 25 to 50 the number of active members required when submitting a written request to call a special congregational meeting; and, b) increasing the quorum required at

congregational meetings from the current 25 members. All comments will be considered in making a final recommendation.

- A final recommendation from the Planning Committee will be sent to Executive Board members prior to the May 20 Executive Board meeting, at which time it is the intention to vote on acceptance of the Bylaws changes subject to and dependent on acceptance of the proposed Constitutional changes. Once the Executive Board accepts the Bylaws changes, the proposed Constitutional changes will be published for review by GCC members; opportunities for discussion with the congregation will be provided; and, a vote for approval of the Constitutional changes will be made at a special congregational meeting.
- C. PMRC – Sally Thuresson presented and reviewed a revised *Employee Handbook* which took into consideration Board members comments and corrections to date. During review, discussion and clarification was solicited particularly with regard to roles and responsibilities related to HR functions. Based on the exchanges, edits to the revised document were made. A motion made to accept the *Personnel Handbook* as presented and edited was tabled. A revised document will be sent to Executive Board members prior to the May Executive Board meeting. Individuals are asked to review the document further and submit comments and questions to Sally Thuresson. An Executive Board vote to accept the revisions may be requested at the May 20 Executive Board meeting.

Based on her Letter of Call, Rev. Sally Iberg is entitled to take three months of sabbatical time following five years of service, which occurs November 1, 2008. It is Rev. Iberg's plan to complete her sabbatical from mid-May 2009 through mid-August 2009. A motion was made, seconded and passed unanimously to approve Rev. Sally Iberg's sabbatical leave in 2009.

Sally reported that PMRC is completing their interviews with staff in the next few weeks.

VI. Other items

- A. John Clonts asked Board Chairs to encourage their Board members to have their picture taken for the GCC Pictorial Directory.

VII. The meeting was adjourned at 10:15 following the unison saying of the Lord's Prayer.

Respectfully submitted,
Beryl Bills - Church Clerk

Next Executive Board Meeting: TUESDAY, May 20, 2008 at 7:00 p.m. – The Mayflower Room

Annual Congregational Meeting: Tuesday, May 27, 2008 at 7:30 p.m. – The Mayflower Room

Sunday Service Attendance
2006-2008

		<u>2006</u>				<u>2007</u>				<u>2008</u>			
Mon	8:30/ 9:30	10:30	Total	AVG	8:30/ 9:30	10:30	Total	AVG	8:30/ 9:30	10:30	Total	AVG	
Jan	117		117		91	235	364		206		206		
	80	297	377		77	206	248		68	242	310		
	86	276	362		108	190	298		82	179	261		
	130	241	371		133	255	388		314		314		
	127	341	468										
			<u>339</u>				<u>325</u>					<u>273</u>	
Feb	122	270	392		103	251	354		95	218	313		
	121	234	355		91	250	341		89	214	303		
	142	372	514		105	307	412		66	164	230		
	130	230	360		58	143	201		100	257	357		
			<u>405</u>				<u>327</u>					<u>301</u>	
Mar	114	294	408		116	255	371		63	269	332		
	106	229	335		114	241	355		71	294	365		
	120	307	427		106	242	348		123	404	527		
	85	203	288		87	208	295		393	466	859 Easter		
									14	Friday Noon Hour			
									62	Maundy Thurs.			
									85	Good Fri.			
									58	131	189		
			<u>365</u>				<u>342</u>					<u>454</u>	
Apr	73	221	294		138	378	519		79	292	371		
	187	409	596		686	686	1372 Easter		240	457	697 Godspell		
	650	630	1280 Easter		148	390	538		89	226	315		
	190	464	654		191	262	453		61	367	428 confirm.		
	108	289	397		118	405	523 Confirm.						
			<u>644</u>				<u>680</u>					<u>453</u>	
May	114	215	329		96	166	262		143	232	375 Choir		
	149	305	454		81	191	272		81	192	273		
	92	225	317		103	454	557 Vote						
	145		145 1 serv.		106		106						
			<u>311</u>				<u>299</u>						
Jun	318		318		309		309						
	231		231		198		198						
	231		231		132		132						
	196		196		133		133						
			<u>244</u>				<u>193</u>						

Easter Maundy Thurs. 99
 East Good Friday 156

<u>2006</u>					<u>2007</u>					<u>2008</u>				
Mon	8:30/ 9:30	10:30	Total	AVG	8:30/ 9:30	10:30	Total	AVG	8:30/ 9:30	10:30	Total	AVG		
Jul	175		175		167		167							
	227		227		120		120							
	201		201		131		131							
	347		347		202		202							
	144		144		167		167							
			<u>219</u>				<u>157</u>							
Aug	201		201		213		213							
	188		188		191		191							
	181		181		180		180							
	185		185		132		132							
			<u>189</u>				<u>179</u>							
Sep	180		180		132		132							
	126	431	557	Rally	114	254	368	Rally						
	98	234	332		81	230	311							
	85	285	370		103	181	284							
			<u>357</u>		83	208	291				<u>276</u>			
Oct	115	209	324		121	270	392							
	97	257	354		78	233	311							
	90	259	349		110	217	327							
	131	395	526		90	230	320							
	145	218	363											
			<u>383</u>				<u>337</u>							
Nov	122	257	379		98	221	319							
	88	225	313		95	183	278							
	96	318	414		82	272	354							
	130		130		171		171							
			<u>309</u>				<u>281</u>							
Dec	10:30	1:30	4:00		10:30	1:30	4:00							
	564	413	422	1399	592	286	333	1211						
	104	318	422		61	245	306							
	181	482	663		123	261	384							
	220	591	679		75	225	300							
	145		145		4:30	7:30	11:00							
					552	67	497	1116						
					172		172							
			<u>824</u>				<u>582</u>							

SENIOR MINISTER'S REPORT

To the Executive Board

May 20, 2008

The congregation has had a full schedule of events since the April Executive Board Meeting including Confirmation Celebration Sunday when we confirmed 25 eighth graders. One person commented that it was the most impressive confirmation service he had ever attended. The Chancel Choir led us worship on May 4th through the presentation of *Vesperae Solennes de Confessore* by W. A. Mozart. In the afternoon was the Simple Gifts 2nd Annual Organ walk in which four Glenview congregations participated. Then, Pilgrim Youth Fellowship led worship on May 11th with a Pentecost related theme, appropriate music to communicate the theme, and four outstanding sermons prepared and delivered by high school seniors.

I participated with eight others in serving a meal at the Good News Community Kitchen on May 4th and participated in Mitzvah Day on May 18th. I also attended the service of appreciation for Susan Thistlethwaite who completed her tenth year as President of Chicago Theological Seminary. After a year of sabbatical leave, Dr. Thistlethwaite will return to the classroom to teach full time. Since we last met I had thirty-three individual appointments, sixteen meetings, and made several pastoral care telephone calls, email contacts, and visits. Each month provides its unique opportunities for engagement and interactive with members of the congregation and community.

Howard W. Roberts

Report to the Executive Board: Highlights for May 2008
Rev. Pam Keckler – Minister for Spiritual Formation

Worship

Assisted in worship twice
Planned and led Confirmation Sunday
Assisted with Youth Sunday planning and rehearsal

Spiritual Growth

Monday night Bible Study – great attendance & discussion – will resume in the fall
Small Group session on Sophia – Wisdom – great dialogue

PYF – High School Youth

Planning for final events in May and June
Youth Sunday preparation with Elizabeth and the youth (senior sermons)

PYFF (Pilgrim Youth Family Fellowship)

8th grade/parent open house

678 Club (Middle School) – 6th, 7th, 8th grade

Working on plans for next year

Confirmation Classes

Retreat was outstanding and great experience for 8th graders April 25-26
Confirmation Sunday – a highlight and celebration always
Working on a fall mini retreat off site in September for both grades

Other GCC Programs

Visit to Covenant Village with Ministers and Parish Nurse

Sacraments/Special Services

Memorial service at GCC for Elizabeth (Betty) Gardner on April 23.
Interment for Betty – private
Baptisms – 3
Confirmed - 25

Wider Church Participation

Attended the Spring CMA meeting in Lombard
Met with student in care for CMA

Personal

Mother's Day came early as I visited my children and their families the first week in May

*Please read some comments on the back side from the Confirmation Retreat paper.

Confirmation Retreat Paper 2008

There are four parts to the Confirmation Paper:

- 1) Expressing My Faith
- 2) Applying My Faith
- 3) Affirming My Faith
- 4) Demonstrating My Faith

One question in section 2 asks “If you could start over again, what would you do?”

Here are some answers from our 8th graders:

- I would treat everyone better to make more friends
- I’d restart my friendships, not with different people, but with a different attitude
- I would think of others before I think of myself
- I would have introduced myself differently to a person
- I would change how I respond to some situations
- I would want to be more loving and tell someone when I love them
- I would forgive, because everyone deserves a second chance
- I would show more respect
- I’d start over a relationship with my step grandfather – to know him better, maybe even interrupt him in his office where he always sits alone
- I’d have a closer bond with my parents
- I would be more willing to take a risk
- I’d give some people I dislike another chance
- I would look at a problem in someone else’s point of view so I could understand and help them, instead of getting mad
- I would be more open and accepting
- I would not start over. I like my life the way it is.
- I would be my real self in a friendship

And what about giving to the church financially? How much and how will you decide?

- I will set a goal in the beginning of the year of how much money I will donate to the church. Hopefully, I will surpass that goal with ease.
- I’ll give how much my parents give.
- I will baby sit. That way I can contribute.
- I will give proportionally to my income, fixed at a percentage maybe 5.1%
- Based on my income, I will pledge how much I will give to the church. I will give as much as I can to help the church that has helped me so much.

Executive Board members – How would you answer these two questions?

If you would like a personal copy of the 8th grade confirmation paper for you to fill out, let me know and I’ll email you a copy. *Pam*

GLENVIEW COMMUNITY CHURCH
REPORT TO THE EXECUTIVE BOARD
Rev. Sally Iberg, Minister for Mission and Ministry
5/20/08

Worship: Loved participating in the Confirmation service, sharing prayers with each of the confirmands. This is such a powerful program at GCC. Preparing to lead worship on 5/25.

Pastoral Care: With Howard, Pam, and Marilyn, visited with our members who live at Covenant Village. It's very nice to be able to spend some time with folks this way. They really seem to enjoy our time with them and appreciate our interaction. Met with Called to Care group to experience and discuss meditation.

Planning Committee: Met with the committee to discuss future programming and staffing at GCC and we met another time to finalize the changes to the constitution and bylaws.

Small Group Ministries: Small groups have begun for the spring. Facilitators include Pam Keckler, Marilyn Belleau, Clark Ross, Kelly Golding, and me. Topics include Sophia-The Wisdom of God, Christianity as Story and History, Five Wishes Living Will, Meditation, Saving Jesus from Fundamentalism, Pentecost in the Gospel of Matthew, Appearances of Jesus - Bible Study. These are offered in the morning, afternoon, or evening, Monday through Thursday.

Center on Christian Leadership/Chicago Theological Seminary. Will explore opportunities to have another course offered at GCC taught by CTS faculty in the future.

Fellowship. Joined 60+ for their April in Paris luncheon. Great photos of Barb Thewis' trip to the City of Lights. Attended Bridge luncheon. Enjoyed the second Annual Organ Walk, stopping at the Methodist, Lutheran, Episcopal churches on our way to GCC - the weather cooperated once again. Enjoyed the Chicago Early Music Consort program at GCC.

Missions Outreach: Met with the Board to discuss April work trip to New Orleans and hear about adult work camp to Neon, KY. Enjoyed participating in Mitzvah Day.

Stewardship Board: Met with the board to wrap up 2008 campaign and begin planning for 2009 campaign. Grateful to Lloyd Bettis, chair, and the entire board for their commitment to GCC.

Sabbatical plans. With wonderful input from the sabbatical group, completed and mailed a proposal for clergy renewal support to Lilly Endowment. The proposal included signatures from Don Clark, Rob Hevey, Howard Roberts, and me. We will hear by the end of October.

Lombard Mennonite Peace Center. Served as a role-play observer at the Peace Center's "Mediation Skills Training". It was a great refresher. I had attended this workshop with the Center in the summer of 2005.

Wider Church. Attended Don Clark's installation as Chair of the Board of Trustees of Chicago Theological Seminary and a celebration of Susan Thistlethwaite's 10 years as President of the seminary as she plans to step down from that position this summer. After a one-year sabbatical, Susan will return to the faculty of CTS. Attended the Chicago Metropolitan Association's spring meeting in Lombard with Jane Sanderson, one of GCC's lay delegates. Attended Rob Leveridge's ecclesiastical council at Galewood UCC. Rob was approved for ordination.

Glenview Clergy Association. Met at Our Lady of Perpetual Help with other Glenview clergy to discuss programming for the upcoming year and to wish Rabbi John Linder well as he and his family move to Phoenix, Arizona, with his new post as Senior Rabbi at Temple Solel.

GLENVIEW COMMUNITY CHURCH BOARD MINUTES

E-Mail to – jane.payne@gccucc.org

NAME OF BOARD: Adult Education

MEETING DATE/TIME/PLACE: Tuesday, May 13, 2008; 7 p.m.; Founders' Room

MEMBERS PRESENT: Chris Calandra, Kathy Chapman, Ellie Dedrick, Julie Orr, Mary Lambert, Ellen Clark, Constance Filling, John Miller

MEMBERS EXCUSED: Carol Bubnovich, Tom Aldrich, Dick Clark

GUESTS PRESENT: (incoming new members) Marcy Blackwelder, Sheryl Long, Sally Schreiner, Earle Shultz

SUMMARY OF MEETING:

The meeting began with a meet and greet introductory session. The old and new board members introduced themselves and gave brief biographical information. Outgoing board members were thanked for their service, and incoming members were welcomed. Constance reminded everyone that the next meeting is our year-end party at her home on June 10 at 7 pm. It will be a potluck, and more information will follow.

Chris Calandra read a short selection from the Buddhist text *Pali Canon* from the Interreligious Insight book as the evening's devotion.

The board then reviewed past programs to determine which, if any, of the speakers we would like to book for the 2008-2009 season. We decided not to discuss presentations given by church members, but to focus on outside speakers we might have to book soon for next year. It was determined that both Jim Kenney and Ron Miller would be invited back. In addition, we would consider contacting the author Gary Wills. We will discuss and consider the church members who spoke last year, as well as others we may ask to give presentations, and create a list of those people at another meeting.

We discussed creating a theme for the 2008-2009 season, similar to this year's theme, *Faith and Politics*. Earle Shultz suggested that we come up with some big questions or ideas around which to base our presentations, and we all agreed that our theme would be *Big Questions*. We will create a list of big questions and the people we think may be able to address or answer them, as the foundation of our planning for next year.

There was a brief discussion about publicizing our Adult Education programs by adding to our email address list. We will place a blurb in the Broadcaster inviting people to send us their email addresses so we can send them reminders of our upcoming programs—like the music board does with the Simple Gifts program. We will also try to take regular attendance at Sunday morning programs and include a request for email addresses.

Sally Schreiner gave a brief description of the Passport program of which she is a part. Northbrook houses of worship completed the program successfully last year and Sally is hoping that Glenview will follow suit in 2009. The idea is that various houses of worship create informative presentations and open their doors to the public during specific hours of a chosen weekend. People are invited to register for a passport ahead of time and then go from building to building during the weekend to visit and learn

about the various churches, mosques, meeting houses, temples, or whatever. The passport holder gets a stamp on his/her passport at every stop that is made. In this way the participants learn about different religious buildings and traditions, and may even decide to revisit or join one of the groups. Sally asked that we consider supporting the effort if it is implemented, and the Board agreed.

Brainstorming for ideas for next season's programming produced the following suggestions:

1. Bible study—format to be determined--one week, one month, at 9:30 in addition to regular Adult
2. Education and/or instead of other programming?
3. Artists including Blanche Hanson and Jim Griffiths
4. Teachers such as Allan Ruter or others to present programs regarding literature and poetry
5. Political speakers to discuss election-related issues
6. Contacting Roberta Rubin from the Bookstall of Winnetka to arrange for a current author to speak—this might include presale and reading of the book by congregants so we can use a discussion format during the Adult Ed hour
7. A round table or panel discussion including PYF students and adults to compare and contrast “big questions” and their answers
8. Attorneys such as Don Clark and Dick Conser who might address some “big questions”
9. interfacing with the Mission Board to create Work Camp and Adult Work Camp presentations
10. Having each of the ministers discuss one or several “big questions” and answers from their areas of interest and expertise
11. Judges from inside or outside of our congregation to discuss topics of current interest
12. Dale Edmonds to discuss her book or other topics

The meeting adjourned at 8:30 p.m. with the Lord's Prayer.

NEXT BOARD MEETING SCHEDULED FOR:

(date): June 10, 2008 (time) 7:00 p.m. (place): Constance Filling's house

Minutes Submitted On: (date) May 14, 2008 (by) Chris Calandra

**GLENVIEW COMMUNITY CHURCH BOARD MINUTES
CHILDREN'S BOARD**

MEETING DATE: May 13, 2008
Meeting called to order at 7:05 p.m.

MEMBERS PRESENT: Laura Heyser, Kathy Lifton, Becky Lothian, Patti Thompson, Jim Yagelski, Doug Morgan, Shawn Eshoo, Dave Spaulding, Clark Bundy, Michelle Langenbach

MEMBERS EXCUSED: Karen Ornduff, Kathryn Hall

MEMBERS ABSENT: Jennifer Wirtz, Beth-Anne Solem, Joanne Malik,

Opening Prayer

Kathy Lifton

Director's Report

Kathy Lifton

- May 18th is the last day of Sunday School
 - Children will begin in the sanctuary with their families
 - Preschool and primary choir are singing
 - Kathy has spoken with Howard about incorporating some comments by the children about what they learned this year into his remarks before dismissing the children
 - Howard will dismiss children by grade and board members discussed Kathy being present near the alter to name teachers their gifts as they are called
 - Children will then be dismissed to 201 for a show by the puppet theater
 - Refreshments after the 10:30 service will represent foods/fruits from the Bible. The 4th graders created a trifold presentation to explain the relevance of the foods presented
- Sunday School Teacher Recruitment:
 - About 50% of Sunday School teachers will be returning next year
 - About 25% have not let Kathy know what they are going to do
 - About 25% are moving on and will not be teaching Sunday School
 - A few suggestions were made for possible teachers for Kathy to contact
- Safe Church Forms
 - Karen had asked that Kathy be contacted regarding who has completed their safe church forms but Kathy has not yet been contacted so there is no update.
- Summer Sunday School
 - Begins first Sunday of June (June 1)
 - This year the summer program will try starting in the Chapel for a children's worship time, lead by one of the ministers
 - Kathy will then take the kids to the Founder's room for their activities
 - Children in attendance include 3 year olds through 6th graders and attendance has reached up to about 40 some years
- 8:30 Sunday School
 - Averaging 8 students per week currently though there were more children at the beginning of the year
 - Kathy will talk to the Sawires' regarding their thoughts on continuing to offer 8:30 Sunday School and will let them make the decision
 - There has been no use of the sitter services during the 8:30 service. Kathy suggested possibly shifting Sunday School kids to the sitter services if the Sawires' decide not to offer Sunday School at 8:30.

Chairman's Report

Becky Lothian

- Recruitment
 - There is one position left to fill.
 - Becky explained some of the process of elections and board member appointments
 - A Secretary and Vice Chair are still needed for next year. Dave Spaulding offered to be Secretary and Laura Heyser offered to be Vice Chair.
- Executive Board Update
 - Rally Day:
 - Executive Board members have been discussing having a single service for Rally Day
 - Children's Board members would like more information
 - Children's Board members discussed fitting activities into whatever service schedule is decided and making efforts to complete Sunday School registration at that time
 - 1st Floor abatement and carpet approved
 - May 19th 7pm: meeting concerning how many services to offer-Kathryn and Laura plan to attend
 - no board members present were at the May 12 meeting regarding Inclusive Language
 - May 27 will be the Annual Congregational Meeting where the formal approval of new board members will be announced

Old Business

- Gently Used Toy Drive
 - Clark reported that two large carloads of toys were received and he will be dropping his load at Youth Services this week for their toy drive in the Glen
 - Clark felt that the success was less than last year but it may be partially related to the weather as it was very cold on the day of the drive
 - Ideas for future toy drives included coordinating more with other agencies who will be getting toys from us and possibly arranging our date around their events, expanding to include clothing, and expanding to include Sunday so people can drop off their items between services

New Business

- Teacher Appreciation Sunday (May 18)
 - See Director's Report above for Kathy's info about meeting with Howard and the plan for Sunday
 - Teacher gifts were assembled and include a bookmark, key chain, and Border's gift card. The gifts look like books with the gift items inside.
 - Lisa Leger worked with 4th graders to prepare list of foods from the Bible and Karen Ornduff will work in the kitchen with the 4th graders to prepare for coffee hour
 - Cradle/Toddler gifts have been put in a basket which has been set out each Sunday for the teachers.
- Coffee Hour (May 18)
 - Patti and Michelle will cover the 8:30 coffee hour with donuts
 - Jim and Karen will cover the 10:30 coffee hour with the foods from the Bible
- June meeting (June 10, 6:30 pm)
 - Potluck dinner at Laura Heyser's house (1329 Pinehurst Drive)—she has **4** cats so be forewarned if the weather is bad and we have to be inside in case you have allergies. Contact Laura for directions or questions.
 - Families are invited and there is a large playroom for the kids

- Becky and Karen will make lasagnas and we will order chicken and rolls. BYOB.
- A sign up sheet was passed to get a head count and sign up for bringing food. Members who were unable to attend tonight's meeting can still sign up to bring something—contact Becky or Karen for information and to let them know how many people will be coming.
- **Please remember to bring your Children's Board binders.** Becky and Laura will be cleaning them all out and making sure the information is updated and consistent for all members.
- New members will be invited to attend so we can meet them and say good-bye to outgoing members.

Meeting adjourned at 8:00 p.m. with a silent prayer.

Respectfully submitted on May 14, 2008 by Laura Heyser

Glenview Community Church Board Minutes

Name of Board: Church Properties
Date/ Time/Place May 6, 2008
Members Present: Blanche Hanson, Kathryn Bettis,
Steve Sargent, Richard Boyer
Staff Present: Keith Merritt
Guest: Margaret Lutz
April Meeting Minutes Approved

Air Conditioning – Plymouth room

Margaret Lutz presented information about the proposed air conditioning unit for the Plymouth room. PB will vote after Ad Hoc Committee approves plan.

GCCNS proposed summer projects –

GCCNS summer work approved with condition Marcia provides name of company doing work and that they are bonded, satisfaction that they understand the care they need to take with asbestos issue (cabinets), and time frame of work. Keith will oversee the work: reface cabinets/new counters for 105 and 106, power wash and repaint (same color) playground sheds, add woodchips to playground. Work and material to be paid by GCCNS and coordinated through Keith.

Board Openings

Individuals have been contacted to fill board positions for 2008-2009 pending approval at congregational meeting in May.

GCC Neighbor

A neighbor of GCC parking lot (southwest side of parking lot) claims damage to fence due to snow plowing of lot. He has been asked to write letter to GCC PB with specific information.

Facility Manager Report Keith Merritt

In addition to daily operations, the following were discussed: new staff person to cover Sundays has been hired, revised cleaning schedule has been distributed to facilities staff, motor for Sanctuary blower has arrived and is ready for installation, tornado drills with GCCNS completed, and evaluation of cradle/toddler air conditioner is pending. Tree planting/replacement in parking lot islands is being researched as part of parking lot paving project/proposal. In addition, circle drive in front and the tree that overhangs it nearest Glenview Rd. was discussed and there was consensus that the tree should be removed for safety and aesthetic reasons. Stage curtains and fire proofing of them (Mayflower room) are being quoted/evaluated.

*PB approved replacement of elevator door light (cost \$2389). Keith will get one more quote and then move forward.

1st Floor Flooring Project - Time frame, schedule of work, and choice of flooring discussed. Keith is coordinating scheduling of project.

PB will review 2007 budget history and current 2008 budget.

Rafael's last day is 5/18 and there will be reception for him during 5/18 coffee hours.

Submitted by Richard Boyer
Next Meeting June 3 – 7:00pm at Blanche Hanson's house; she will send directions and invitations.

GLENVIEW COMMUNITY CHURCH BOARD MINUTES

NAME OF BOARD: BOARD OF CONFIRMATION & YOUTH MINISTRY

DATE/TIME/PLACE: March 16, Youth Room

MEMBERS PRESENT: Mike Barron, Elizabeth Ciccolini, Emily Davis, Hillary Davis, Christine Foley, Cindy Gabuzzi, Bob Raebel

MEMBERS EXCUSED: Shannon Hogan, Stacy Bernard, Pam Keckler, Dave Krueger, Jill Ruter

REPORTS:

- Youth Room:
 - Shannon Hogan volunteered to buy food and organize the room, as needed
 - Need to discuss building of additional closets in the room
 - We'd still like to ask membership for the donation of a gently used air hockey table
- Youth Sunday, Sunday, May 11:
 - Rehearsal and dinner for youth participants, Friday, May 9
- Workcamp (June 16-19):
 - \$100 charge/youth will cover all expenses
 - Maximum of 20 youth will be allowed to attend
 - Need 1 adult for every 5 youth
- National Youth Event (NYE), July 25-27:
 - Need an adult to be in charge and attend
 - 4 youth have already signed up
 - maximum room for 20
- 2008-2009 CY Board:
 - Need 5 people for next year;
 - Board discussed list of possible candidates
 - Christine F. will take names to the Executive/Leadership board and then call candidates

Minutes submitted by Christine Foley

Next meeting Sunday, April 13th in Youth Room at 11:40AM

GLENVIEW COMMUNITY CHURCH BOARD MINUTES

NAME OF BOARD: BOARD OF CONFIRMATION & YOUTH MINISTRY

DATE/TIME/PLACE: April 13, Youth Room

MEMBERS PRESENT: George Buzard, Elizabeth Ciccolini, Jill Ruter, Pam Keckler, Emily Davis, Hillary Davis, Carrie Muehlbauer,

MEMBERS EXCUSED: Mike Barron, Stacey Bernard, Christine Foley, Cindy Gabuzzi, Shannon Hogan, Dave Krueger, Bob Raebel

GUESTS: None

SUMMARY OF MEETING:

- PYFF Lent:
 - The event was canceled due to an illness in the presenter's (Cass Friedman) family
- PYF Service Projects/Fund Raisers: Pam compiled a list of events by month for review
- Youth Room Organization:
 - Shannon H. volunteered to check on food stash and keep it organized on weekly basis
 - Additional closets to be built in SW corner – timing TBD
 - Ask membership for donation of gently used air hockey table
- Youth Sunday, Sunday, May 11:
 - Rehearsal and dinner for youth participants, Friday, May 9
 - Jill will purchase dinner from Pizza Bakery
 - Jill and Emily will work with the youth to design tie-dyed t-shirts Friday night so that they can wear them at the Sunday service.
 - The board helped Elizabeth brainstorm additional ideas for the service
- Final PYFF event, Sunday, May18, 4-6pm:
 - Incoming freshman and their parents have been invited to attend
 - PYF youth created personalized invitations for the incoming freshman
 - Dr. Jim Shellard and a panel of parents will be the speakers
 - The board will bring a variety of "heavy" hors d'oeuvres
- Summer '08 Workcamp (June 16-19):
 - \$100/person will cover all expenses
 - so far 7 youth have signed up
- National Youth Event (NYE), July 25-27:
 - 7 youth and 4 adults have signed up to attend
- Tech Update:
 - Dave Krueger purchased the digital camera, color printer and supplies with Youth Board funds.
 - The Barron family donated a laptop.
 - Dave will still purchase a new monitor for Elizabeth's office.
- 2008-2009 CY Board:
 - Christine is continuing to contact potential candidates for the board
 - youth representatives will be: Cailey Hinz, Danny Baddeloo, Kevin Barron

After praying the Lord's Prayer, the meeting was adjourned

Minutes submitted on May 15, 2008 by Jill Ruter

Next meeting Sunday, May 18th in Youth Room at 11:40AM

GLENVIEW COMMUNITY CHURCH BOARD MEETING MINUTES

NAME OF BOARD: Fellowship

MEETING DATE/TIME/PLACE: May 11, 2008 / 11 :30a.m. / Founders Room

MEMBERS PRESENT: Marvin Lutz, Bud Kinzalow, Karin Kinzalow, Susan Johns, Peter Stettler, Fran Oldham, Ann Grant, Linda Crowder

MEMBERS ABSENT: Diane Christiansen, Mij Kritzman, Rob Orr, Colleen MacKimm, Paul Desjardins

SUMMARY OF MEETING:

- Fran reminded the group that this was the last board meeting of the church year and that Bud and Karin will be taking over as co-chairs beginning in June. She also asked us to forward possible candidates for board membership to Bud and Karin.
- The Fellowship Board is responsible for appetizers at the June Sth New Member Reunion to be held from 6-Spm at John Clonts home. We discussed who could attend and provide appetizers.
- Fran informed the group that the Sheila Tully Dancers are confirmed for March S, 2009 at 6pm - early preparation for the St. Patrick's Day Potluck.
- Meeting was adjourned at 10:00am.

Minutes respectfully submitted by Marvin Lutz.

Glenview Community Church
Finance Board Minutes
May 12, 2008

Members Present: Steve Morgan, Bob Kappus, Jeff Wagner, Jane Hund, Laura Olsen, Scott Barnes, Scott Williams, Cricket Kelly, Winnie Clonts

Members Absent: None

Also Present: Rob Hevey, Char Lillquist

Meeting called to order 7:00 pm opening prayer led by Scott Barnes

Summary of Meeting:

April meeting minutes were approved

Treasurers Report:

Building fees are now up to budget

Gas bill has been caught up after receiving last two months bills

Church property maintenance cost is slightly higher from hard winter

There is an additional \$1900 in expenses that was a culmination of smaller charges that came from bank reconciliation

Budget:

Year to date revenues are slightly ahead of budget

This months revenues fell under budget

Insurance:

No report

Stewardship:

It was reported that the final pledge numbers for 2008 have exceeded the budgeted pledge numbers

Nursery School:

Nursery Scholl is projecting an increase in revenues for the school year 2008-9 coming from an increase in tuition and a larger enrollment

Expenses will be marginally higher resulting in a net revenue increase

The Board wishes to discuss the possibility of allowing the Nursery School to handle its own cash management

Investment:

Board discussed each investment manager and voted to retain the services of William Blair

Leadership:

Steve Morgan completes his term as Finance Board Chairman we thank him for a job well done

Jeff Wagner takes over as Finance Board Chairman

Finance Board is still seeking to replace one outgoing board member

Audit:

No report

PMRC:

No report

New Business:

Carpet project was approved at Executive Committee Meeting

Funds for carpet are coming from \$35000 transfer out of capital reserve that was approved last June combined with funds from Creating Sacred Spaces that was previously unspent

It has been suggested that a new procedure be implemented that states if a capital improvement has been approved the capital improvement must be completed in the fiscal year in which it was approved otherwise it must be re-approved. If the actual cost exceeds the original approved estimated cost by more than 10% the capital improvement must be re-approved.

Music Board spoke to Finance Board about a reduction in music budget for 2008. The Finance Board reviewed how the budget process worked and how decisions were made with the allocation of funds. The Music Board expressed concerns that the expenses to run the music program are increasing at a faster pace then the budget has increased. Methods on how to better forecast a budget for the music program were discussed. Maintaining a first rate music program is a concern of both boards. Better communication between each board will help forecast future expenses and eliminate unforeseen costs in the future. Suggestions were made to consolidate music financial accounts on the balance sheet over time giving better overall cost of music program.

Next meeting will be on June 9, 2008

The meeting ended at 10:20 pm with The Lord's Prayer
Submitted by Scott Barnes

**GLENVIEW COMMUNITY CHURCH
BOARD MINUTES**

NAME OF BOARD: Membership Board

MEETING/DATE/TIME/PLACE: Sunday, May 4, 2008, 11:45 a.m./Parlor

MEMBERS PRESENT: John Clonts, Debbie Berg, Amy Davis, Amy Eccleston, Judy Fellingham, Tammy Lundal, Meg Macfadden, David Selby, Brian Wegley

MEMBERS EXCUSED: Sandie DesJardins, Jim Shellard

STAFF PRESENT: Linda Binaei

The meeting was called to order at 11:45 a.m. by John. The March minutes were approved. The April minutes were approved with 1 correction: the reunion is from 6-8p.m., not 4-6p.m.

Brian made an announcement that Glenbrook South High School has been awarded the Grammy Award. This award comes with \$10,000 for the Music Department to continue their wonderful programs. CONGRATULATIONS!!!!

SUMMARY OF MEETING

Old Business:

...Photo Directory sign-up – John passed a sheet around asking volunteers to help.

..."Colony" update – There was a unanimous vote to change the name to "Neighbor to Neighbor".

...Pod cast update – A discussion followed whether the board wanted to continue "managing" this project. Ideas were: create a need as a Church to update our system, identify a team from members of the congregation, and connect with other churches regarding their systems. John will bring this up at the next Executive Board meeting.

...Yearly calendar – They are still trying to obtain a "unified technology" system.

...Update from Linda – The next New Member class is June 1st – Amy D. will attend. Linda stated that she has 25 interested people. During the month of April, we delivered 11 loaves of bread and 18 letters were mailed.

New Business:

...Board vacancies – Amy D. reported the board is 1 person shy of being complete for next year. She will follow up with the names given her.

...Mentoring program – Articles have appeared in the Broadcaster and Sunday bulletin. John will submit a request for David to make this announcement from the pulpit on May 18th. We would like to have mentors in place by June 8th. It was suggested that we have sign-ups in the Narthex on May 18th. John will make this request to Howard. Judy volunteered for 9:15 and Debbie and Amy E. volunteered for 11:30. Linda was asked for a list of names and addresses from the last 2 years to present.

Membership Board Report – John passed out his annual report and asked for additions and/or subtractions.

New Member Reunion – This will be held on June 8th from 6:00p.m. to 8:00p.m. at the home of John Clonts. We will share this event with the Fellowship Board. Judy will speak with Fran regarding dividing the responsibilities.

Coffee Hour – We are slated for June 15th. Meg and Judy will serve the water and lemonade.

Rally Day –1 service requested - This will be discussed at the next joint meeting of the Fellowship and Membership boards on Sunday, August 10th at 10:30. John has mentioned this at an Executive Board meeting.

John reminded us of 3 upcoming meetings:

1. “Inclusive Language” – Monday, May 12th at 7 p.m. in the Plymouth Room.
2. “How Many Worship Services” – Monday, May 19th at 7 p.m. in the Plymouth Room.
3. Open and Affirming – “Homophobia” – Thursday, May 29th at 7 p.m. room TBA.

The meeting was adjourned at 12:40 with the saying of the Lord’s Prayer.

FINAL MEMBERSHIP BOARD MEETING: Sunday, June 8th – 5p.m. – John’s home.

MINUTES SUBMITTED: Wednesday, May 7, 2008 by Judy Fellingham

Minutes – May 13, 2008 GCC Missions Outreach Board Meeting

Present: Kathy Tomita, Barb Gundrum, Nancy Winton, Donna Peterson, Bill Ryan, Nancy Mullarkey, Michele Monteith, Diane Carroccia, Tracy Sawires, Kelly Golding, Linda Binaei (Dir. Member Engagement), Reverend Sally Iberg

Excused: John Demler, Cindy Dailey

Meeting began at 7:05pm

GCC special food collection (bags handed out) - scheduled for August 3 (hand out bags on July 20 and 27).

GCFD Summer Work Session - MOB will schedule one summer work session at Greater Chicago Food Depository. April 19 work session had 12 participants from GCC.

Work Trips - *Kathy Tomita reported that the GCC adult work trip to Kentucky (April 26-May 3) went well and had 13 participants. The group worked with H.O.M.E.S. out of Neon, Kentucky which has experienced a cut in federal funding for their work. Kathy stressed the importance of these trips as vehicles to better understanding of how others live in the US and abroad. Importance of MOB and GCC support also emphasized. Next trip being planned is February 2009 to Back Bay in Mississippi. International work trip is being researched '09 or '10.

*Reverend Iberg reported on her work trip to New Orleans (4/5-4/13), the signs of devastation still evident, as well as the rebuilding work being done by UCC and other organizations. The next CMA trip to New Orleans is scheduled for September '08.

Grade 6-12 - *Nancy Mullarkey will contact Elizabeth Ciccolini to find out whether MOB can work with PYF to schedule outreach that will also work with high school community service hour requirements, etc...

*MOB will work with Elizabeth in supporting 6,7,8 outreach/social activities in '08-'09 (approximately 5 during the year).

Board Slots - Bill reported that individuals have been contacted to fill slots for MOB '08-'09 year pending congregational meeting/vote in May.

International Child Sponsorship - Bill and Nancy Winton from MOB will research and narrow down choices for international child sponsorship through UCC global ministries (2 of 4 children approved as part of 2008 benevolent giving allocations). Tracy will work with Kathy Lifton and Children's Ed board so they can decide how Sunday school can be involved in choosing other two children to sponsor in fall '08.

MOB leadership roles for 2008-2009 – Bill discussed likelihood that he will not be able to chair MOB in '08-'09. MOB will discuss this more via email in next week and will present information to GCC leadership committee.

Mission Moment: May 18 – 8:30 Protestants for the Common Good (also Adult Ed. speaker for that date). No 10:30 Mission Moment.

Meeting adjourned at 8:55pm. Next meeting is June 10 at 7:00pm, location TBA

Already completed projects on or off site 2007-2008:

GNCK ongoing (third Wed and first Sunday of each month) (MOB)

Ongoing 1st Sunday GCC food collection (MOB)

Back Bay work trip (Sept. 18 adult participants/1 week) (MOB)

September back to school kits (early Sept approx. 75 attendees incl. Sun school and 150 bags) (MOB)

October 150 brown bag meal assembly (PYF assembly and MOB logistical and donation support)

October – (\$90000+) Heifer International quilt auction (Amos, Bills and co.)

October - Special food collection (100+ bags) (MOB)

November - 30 birthday bag assembly (Exec. Bd. meeting) (MOB)

December – work sessions at Northfield Food Pantry (MOB)

December – Toys for Tots (TMS and friends)

Mission Tree - \$535 to The Night Ministry (\$500 from WA) and 4 full bags of cold weather items...including collection from 5 C's and TM boy scout troop that she leads. (MOB and chap 20)

January – used computer component collection (15-20 pieces) Good News Partners (MOB)

1/12/08 – Greater Chicago Food Depository – 15 participants (MOB)

1/27/08 – Interfaith Worship Service – Theme creation/environment (Interfaith Connections and MOB)

March – special food collection (100+ bags) (MOB)

2/3/08- Reverend Cally Rogers-Witte, Global Ministries UCC (Adult Ed. and MOB)

February – 100 coloring kits for children's hospital (Children's Ed.)

February – Pasta Luigi (music and friends)

3/2/08-3rd part of hunger series organized by Pieter Fockens – luncheon and letter writing (MOB) 2/17 and 2/24 (Adult Ed.)

4/5-4/13/08 – Reverend Iberg work trip to New Orleans through CMA/UCC

4/19/08 – GCFD work session

4/26-5/3/08 – GCC adult work trip to Neon Kentucky through H.O.M.E.S.

GLENVIEW COMMUNITY CHURCH BOARD MINUTES

NAME OF BOARD: Music

MEETING DATE/TIME/PLACE: Tuesday, May 6, 2008 at 7 p.m.in Room 201.

ATTENDANCE: Susan Mann, Gary Wendt, Sue Newberry, Gary Berkenstock, Richard Spears, Maggie Bemm, and Mickey Safstrom. Excused: Debby Shellard, Andy Lewis, Ann Garrison, David Aki and Margaret Ludemann.

The meeting was called to order at 7 p.m... The minutes of April 8, 2008 were approved as read.

Review of Music Program financials – The financial report for March and April was reviewed. The Board approved two disbursements from the Friends of Music fund:

- 1) \$108 for the printing of special offering envelopes for Friends of Music available at the May 4 service and throughout the year in the kiosks
- 2) Payment for the musicians in the orchestra that played at the May 4 services.

There was a generous response among those who chose to use the Friends of Music envelopes on May 4. The amount collected covered the cost of the orchestra with a little left over for the Friends of Music fund. Gary Berkenstock will thank those who donated on May 4 through an article in the next Broadcaster. Gary Wendt and Sue Newberry will assist with the article.

On May 12, 2008 at 8 p.m. members of the Music Board will meet with the Finance Board for the purpose of sharing our board's concerns about financing the church's music program. Sue Newberry, Gary Wendt, Andy Lewis, Gary Berkenstock, David Aki, Richard Spears, and Mickey Safstrom will represent The Board at this meeting. Our representatives will meet before the Finance Board meeting at 6 p.m.

Executive Board Recap – The Executive Board packet was reviewed by The Board.

Staff Reports – Gary Wendt reported on the successful Bell Choir concert and this year's Organ Walk. Both were well attended and appreciated by GCC members and the community. The new octave of bells has arrived.

Old Business

Simple Gifts – There are still 3 more concerts for this year plus the Organ Coolers. Trish Melzer-Swaydrak is preparing the May 25 "God Bless America" program. We will work with her to help as needs arise. The June 1 "Picnic and Pipes" program will be family oriented so other boards will be contacted. Music Board members will assist with ushering and any other tasks that are needed.

Board Binders will be completed over the summer.

Music Facilities Renovation – Our letter to the Properties Board regarding the improvements needed for the Bell Choir room has not elicited a response. Sue Newberry will follow-up by contacting Blanche Hanson, Chairman of the Properties Board for next year.

The proposal for possible improvements to the stage area for choir needs has not yet been finalized. Andy Lewis needs to be brought into the discussion, and Richard Spears will try to contact Andy before our June 11, 2008 meeting.

2009 10th anniversary of Buzard Organ, Opus 21 – If a commissioned work is to be a part of the fall celebration we need to proceed very soon. The cost for such a commissioned work is estimated to be between \$7,000 - \$12,000.

Leadership Committee Report - Sue Newberry reported that we have four very fine new members for our Board. We will welcome our new members at the June 11 Board meeting.

Czech Republic choir – We still do not know the exact date they will be with us in the fall.

New Business

Gary Berkenstock announced that the Chicago Early Music Consort will be featured on WFMT following the 4 p.m. newscast on Tues., May 13. There will be an announcement at that time of the group's upcoming concert on May 18, 2008 at Glenview Community Church as part of our Simple Gifts series.

Sue Newberry announced that next year's Music Board meetings will be held on Wednesday evenings at 7 p.m. This change of meeting time will enable Gary Wendt and Andy Lewis to attend. It is hoped that it will also fit the schedules of our new members.

The meeting was adjourned with the Lord's Prayer at 9:15 p.m.

NEXT MEETING: Tuesday, June 11, 2008 at 7 p.m. at Susan Mann's house, 1866-B Grove St., Glenview.

MINUTES SUBMITTED: Thursday, May 7, 2008 by Mickey Safstrom

BOARD CALENDAR

May 18	Chicago Early Music Consort (Richard, Mickey, Sue N.)	4:00 p.m.
May 20	Executive Board	7:00 p.m.
May 25	"God Bless America"	4:00 p.m.
May 27	Annual Congregational Meeting	7:00 p.m.
June 1	"Picnic and Pipes" (Richard, Susan, Mickey, Gary B.)	4:00 p.m.
June 11	Joint Music Board meeting	7:00 p.m.
June 22	Coffee Hour	9:30 a.m.
June 24	Executive Board	7:00 p.m.

GLENVIEW COMMUNITY CHURCH BOARD MINUTES

E-Mail to – gccucc@gccucc.org

DUE: 9:00 a.m. Thursday before the next Executive Board Meeting

NAME OF BOARD: Pastoral Care Board

MEETING DATE/TIME/PLACE: May 13, 2008/7:00 p.m./Room 210 of GCC

MEMBERS PRESENT: Mary Lou Aagaard, Karen Aeschlimann, Val Anderson, Marilyn Belleau, Mary Buchanan, Diane Damico, Karen Christiansen, Sally Claffey, Sally Hicks, Sarah Koloms, Jane Sanderson and Kay Warskow

MEMBERS EXCUSED: Kara Clark and Vicki Moore

MEMBERS ABSENT: None

DEVOTIONS: Mary Lou Aagaard shared "The Servants' Beatitudes".

SUMMARY OF MEETING:

Approval of April Minutes:

The minutes were approved.

Chair Report/Executive Board:

- Sarah circulated a Stewardship update
- There is a meeting to discuss the number of services on Monday, May 19
- The photo directory photography is underway. Those who were unable to have their photos taken may submit their own photos. If taken by a professional, a release is required.

Leadership Board

- No report

Alter Flower Delivery

Schedule is as follows:

- May 18—Mary Buchanan
- May 25—Jane Sanderson
- June 1—Jane Sanderson
- June 8—Sally Hicks

Sally Hicks needs a substitute for June 15 as she will be out of town that day.

Memorial Receptions

There were no memorial receptions in the past month.

60+ Luncheon

The next luncheon is May 27th. Patti Thompson and Mary Buchanan are not available that day. Diane Damico, Mary Ellen Johnson and Val Anderson will volunteer that day. Mary will check to see if Rosalie Amos would also be available.

We Care

No report.

Privileged Visitors

Karen had spoken to all the visitors and will discuss one concern with Marilyn Belleau.

Old Business/New Business

2008-2009 Pastoral Care Board—There is a full slate of members for next year's Pastoral Care Board.
Committee Assignments for Next Year—Sarah circulated a sign up sheet for committee assignments for next year.

NEXT BOARD MEETING SCHEDULED FOR: Tuesday June 10, 2008 at 6:00 p.m. at Kara Clark's home (northwest corner of Dewes and Elm streets)

Minutes Submitted On: May 14, 2008 by Karen Christiansen

TOPICS / AGENDA—FOR NEXT MEETING:

Devotions—TBD

GLENVIEW COMMUNITY CHURCH BOARD MINUTES

Mail to – jane.payne@gccucc.org

NAME OF BOARD: Services & Sacraments

MEETING DATE/TIME/PLACE: Tuesday, May 13, 2008 at 7 p.m. in the Youth room of the Church.

MEMBERS PRESENT: Pam Asplund, Carolyn Brown, Mike Davis, Ellen McCarthy, Ralph Mueller, Carlton Olson, Carol Young.

MEMBERS EXCUSED: Cathy Ach, Steve Distler, Gayle Jones, Liz Mason, Jeff Lundal, Bob Richter.

AD HOC MEMBERS PRESENT: Nina Fockens, Steve Lindell & Joyce Zylke,

Prayer was read by Nina

MINUTES of the April 8, 2008 meeting were approved as received.

Nina reported on the last Executive Board.

COMMITTEE REPORTS:

Ushers: Jeff Lundal will remain on the board but he would like another board member to replace him as chair of the ushers.

Lectors: Susan Edgar is willing to be an ad hoc member next year by setting up the Lectors schedule.

Communion: There will be one service on June 3 at 9:30 and communion will be by intinction.

OLD BUSINESS: There will be a Tri-chairperson next year composed of Mike Davis, Carolyn Brown and Pam Asplund.

The Pot Luck will be on Tuesday June 10 at 6:30 at Carolyn Brown's home.

After the Lord's Prayer the meeting was adjourned at 8:10.

Respectfully submitted,

Ellen McCarthy

NEXT BOARD MEETING SCHEDULED FOR:

Date: **Tuesday, June 10, at 6:30 pm** at Carolyn Brown's home..

GLENVIEW COMMUNITY CHURCH – BOARD MINUTES

BOARD NAME: STEWARDSHIP

MEETING DATE: May 13, 2008

MEMBERS PRESENT: Cathie Estey, Peter Grant, Scott Smith, Glenn Kelly, Lloyd Bettis, Jane Demler, Mike Loeber, Mary Ellen Johnson and Karen O'Brien

STAFF PRESENT: Sally Iberg

MEMBERS EXCUSED: Lori Eshoo, Beth Brady and Larry Chandler

GUESTS: Colin Kelly

SUMMARY OF MEETING:

Lloyd opened the meeting at 7:05 p.m. with a reading from Luke 21: verses 1-4 where Jesus shared, "I tell you the truth, he said, this poor widow has put in more than all the others. All these people gave their gifts out of their wealth; but she out of her poverty put in all she had to live on." Jesus' acknowledgement of this widow set an example for others. This verse is included in the Stewardship Annual Report to the Congregation that was shared with the Board.

The minutes were approved as written. Lloyd reported that Executive Board confirmed the dates of Sally Iberg's sabbatical during the summer of 09. Peter reported that Sally Thuressen and Colin Kelly have agreed to be on the Stewardship Board for next year. There is still one opening on our board to fill.

Lloyd gave the final figure of pledges received for the 2008 campaign as \$1,027,386. We discussed plans for the 2009 pledge campaign. Discussion will continue with the new board in June. It was agreed that the pledge campaign will end on January 15, 2009 in order for the Finance and Executive Boards to finalize the 2009 budget. The board also discussed inviting the congregation to a stewardship forum during the fall campaign.

The meeting was adjourned at 9:00 with the Lord's Prayer.

NXT BOARD MEETING SCHEDULED FOR:

June 10, 2008 at 7:00 p.m. at the home of Peter Grant.

Minutes submitted on: May 13, 2008

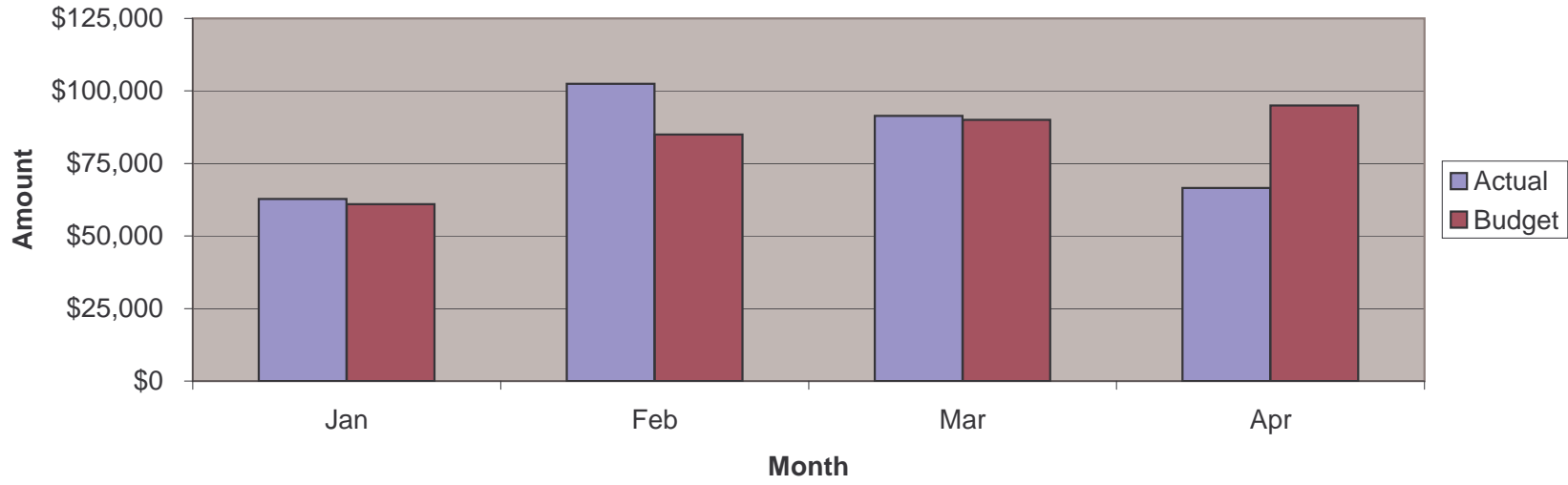
FINANCIALS

**Glenview Community Church
YTD Revenue Expense Summary**

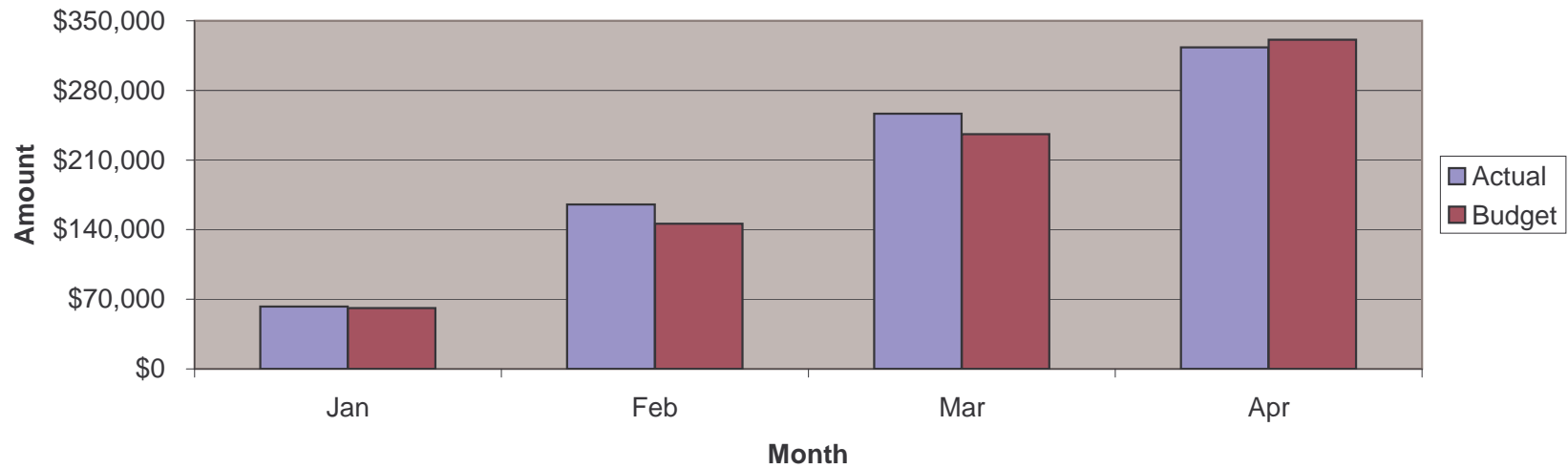
		YTD	YTD	YTD	Notes
	Apr-08	Actual	Budget	Over/(Under)	General Note: Most revenue accounts and certain expenses have been seasonally adjusted.
				Budget	
Revenues					
Contributions	74,436.90	354,619.07	359,000.00	(4,380.93)	Primarily Current \$7,800 U , Non-pledge \$4,000 U , Overage \$7,200 F
Loose Offerings	861.50	2,964.46	4,680.00	(1,715.54)	
Women's Assoc	8,000.00	8,000.00	-	8,000.00	Contribution received a month earlier than expected.
Fees & Nursery School	3,770.65	17,444.60	13,190.00	4,254.60	Primarily Building Fees - \$4,000 F
Interest	696.66	3,466.41	4,000.00	(533.59)	
Housing Trust	6,250.00	6,250.00	6,250.00	-	
Endowment I	1,625.00	1,625.00	1,625.00	-	
Endowment II	1,266.97	4,262.65	3,100.00	1,162.65	
Mission Offering	150.00	11,455.43	12,000.00	(544.57)	
Music Transfer	-	-	-	-	
Total Revenues	97,057.68	410,087.62	403,845.00	6,242.62	
Expenses					
Pastoral	29,875.72	119,410.22	119,785.32	(375.10)	
Missions	7,890.25	42,416.43	42,961.00	(544.57)	
Children's Ministry	3,366.09	11,358.77	12,241.32	(882.55)	
Confirmation & Youth	3,251.32	13,034.44	13,044.00	(9.56)	
Pastoral Care	4,290.11	17,358.87	17,217.68	141.19	
Membership	2,577.84	10,762.69	10,979.68	(216.99)	
Adult Education	-	1,100.00	740.00	360.00	
Services & Sacraments	229.55	283.25	163.32	119.93	
Fellowship	125.97	453.68	230.00	223.68	
Music	6,355.76	27,041.75	28,320.68	(1,278.93)	
Stewardship	(9.00)	(113.00)	815.00	(928.00)	
General & Administrative	15,715.67	73,741.72	78,402.96	(4,661.24)	Postage - \$600 U , Stationary - \$1,000 U , Maintenance - \$1,300 F , Communication - \$1,000 U , Insurance - \$7,800 F , Misc. - \$1,900 U
Church Property	29,274.95	101,519.42	95,898.64	5,620.78	Primarily maintenance - \$5,500 U
Pageant	-	-	-	-	
Capital Reserve	1,614.50	6,458.00	6,458.00	-	
Long Range Plan Funds	-	-	-	-	
Total Expenses	104,558.73	424,826.24	427,257.60	(2,431.36)	
Net	<u>(7,501.05)</u>	<u>(14,738.62)</u>	<u>(23,412.60)</u>	<u>8,673.98</u>	
General Fund	50,124.14				
Capital Reserve	234,588.32				

F : Favorable to Budget; **U : Unfavorable** to Budget

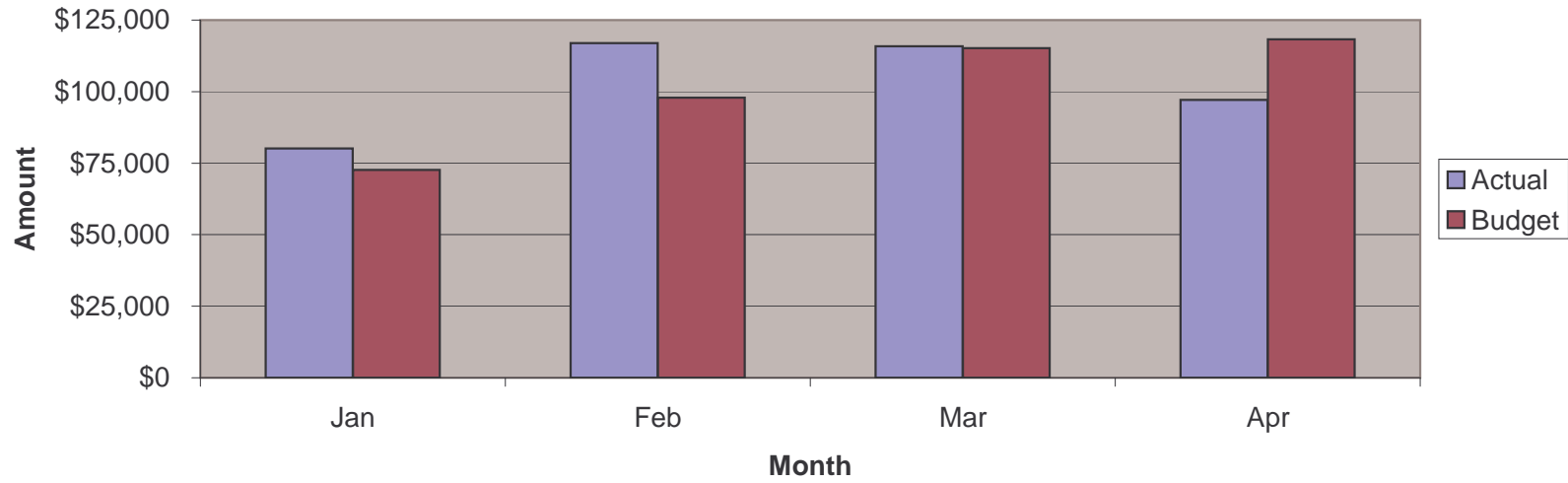
Monthly Pledges - Actual vs. Budget



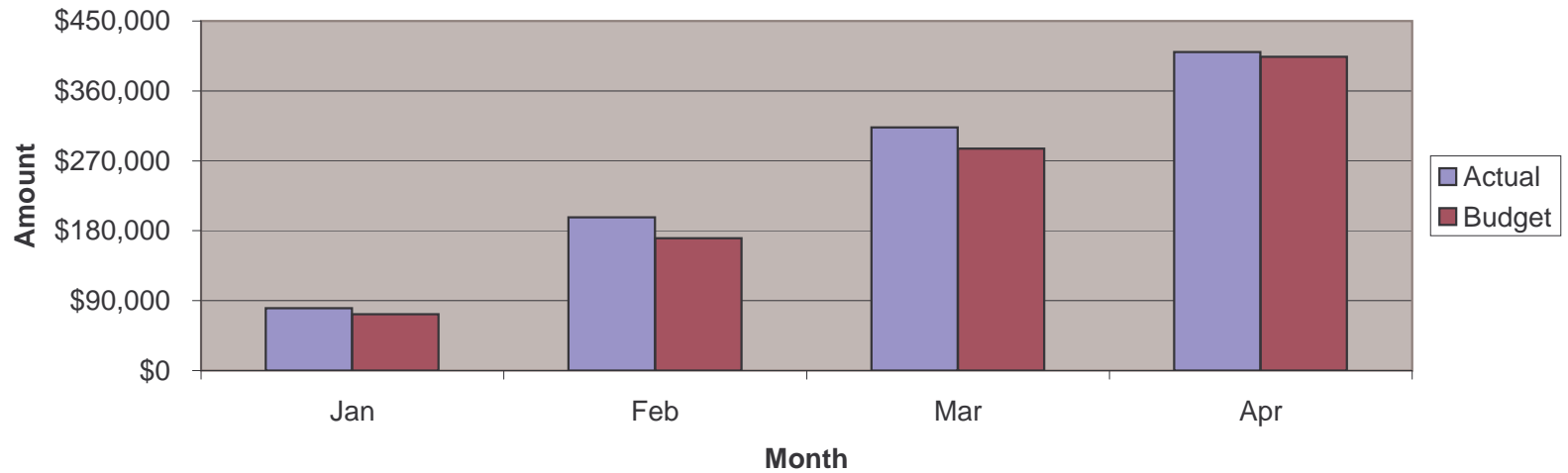
YTD Pledges - Actual vs. Budget



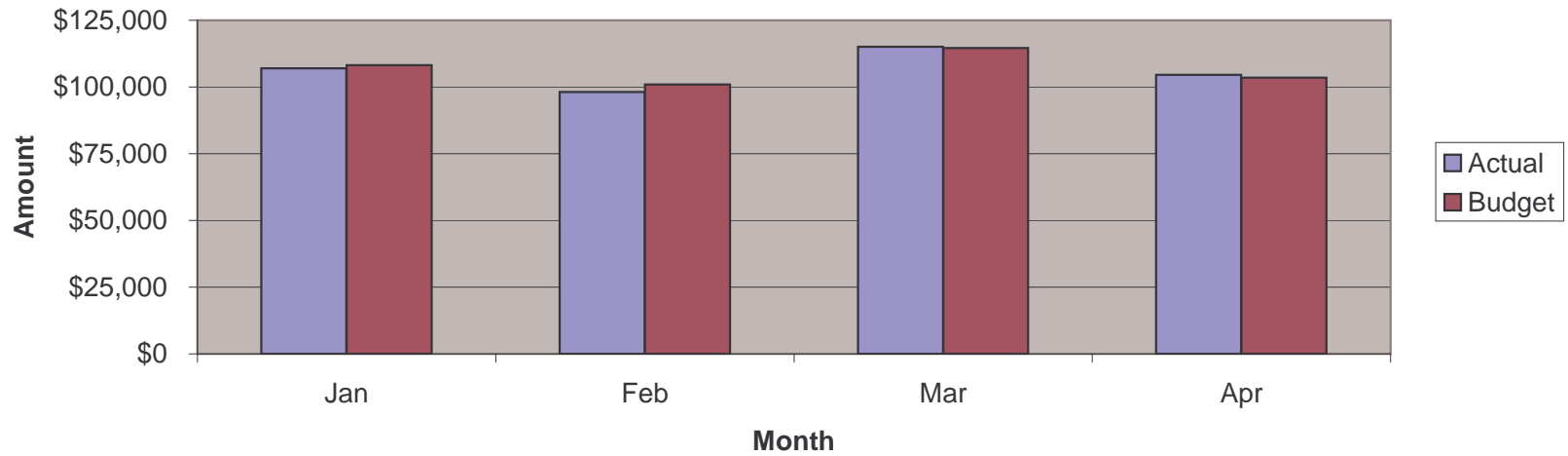
Monthly Revenue - Actual vs. Budget



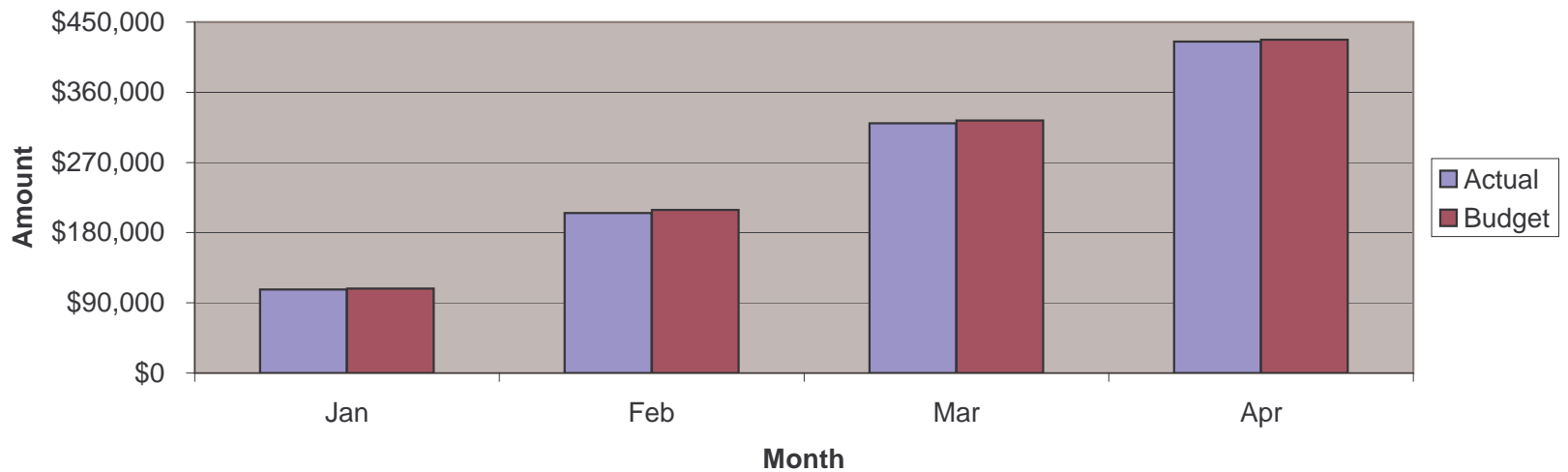
YTD Revenue - Actual vs. Budget



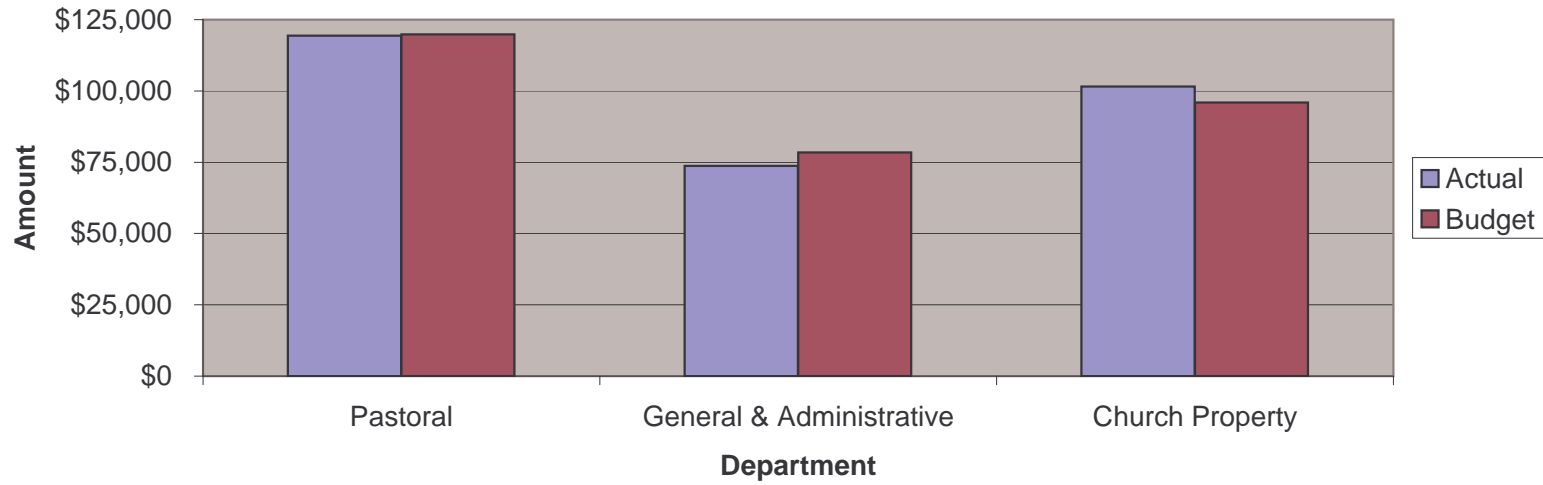
Monthly Expenses - Actual vs. Budget



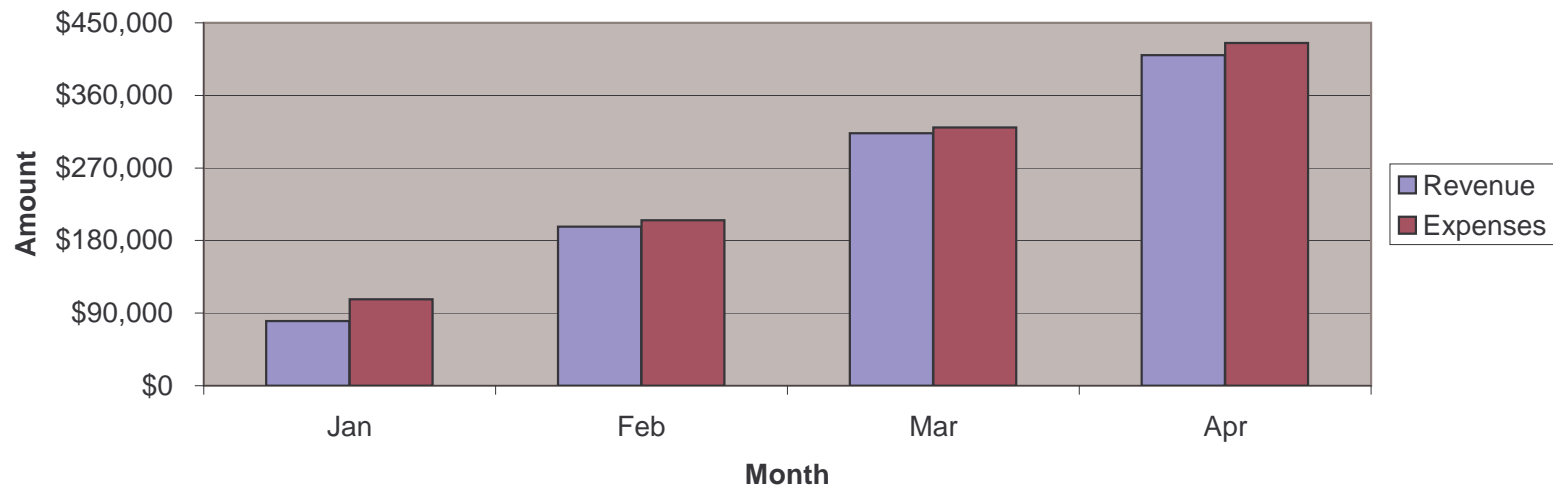
YTD Expenses - Actual vs. Budget



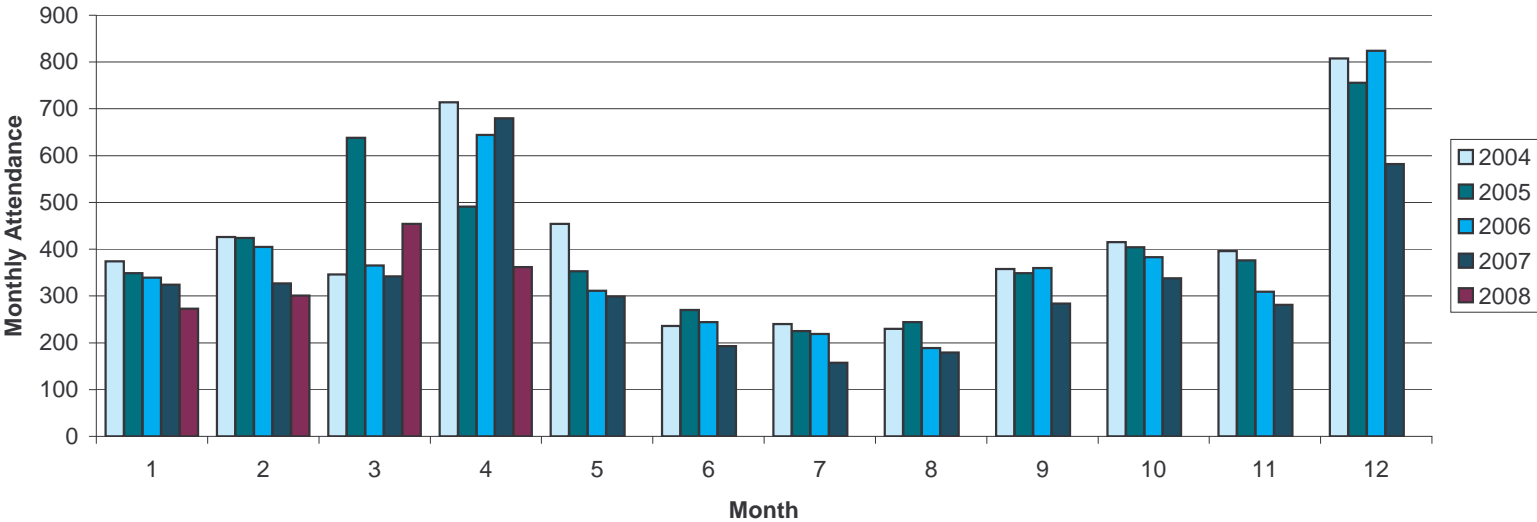
YTD Operations - Actual vs. Budget



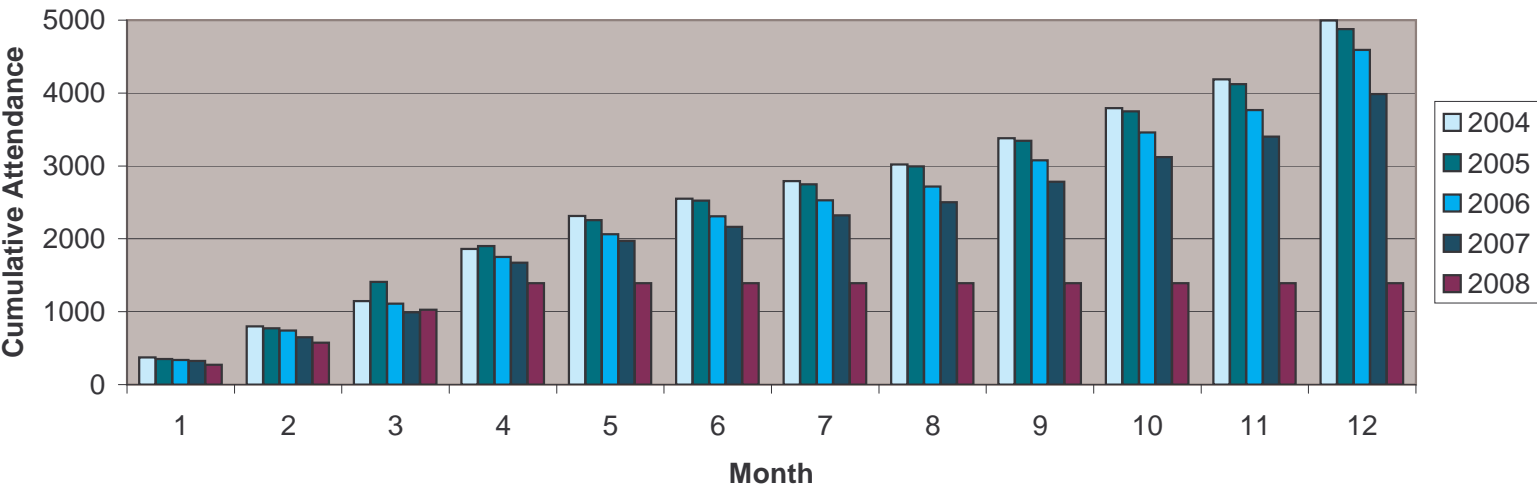
YTD Actual - Revenue & Expenses



Sunday Average Attendance - Monthly



Sunday Average Attendance - Cumulative



Date: 5/13/2008
 Time: 9:55:00 AM

Glenview Community Church
 Analysis of Revenues & Expenses - Summary 2008
 Month-to-date, Through April 2008

Page: 1

Accounts	MTDActual (This Year)	MTD Budget (This Year)	YTDActual (This Year)	YTD Budget (This Year)	YTDActual (Last Year)	Annual Budget (This Year)
Revenues						
Total Revenues	\$97,057.68	\$118,245.00	\$410,087.62	\$403,845.00	\$430,826.24	\$1,231,931.00
Expenses						
Pastoral Expenses	\$29,875.72	\$29,946.33	\$119,410.22	\$119,785.32	\$194,800.38	\$359,356.00
Missions	\$7,890.25	\$7,740.25	\$42,416.43	\$42,961.00	\$45,367.30	\$117,883.00
Children's Ministry	\$3,366.09	\$3,060.33	\$11,358.77	\$12,241.32	\$1,540.39	\$36,027.00
Confirmation & Youth Ministry	\$3,251.32	\$3,261.00	\$13,034.44	\$13,044.00	\$1,257.10	\$34,082.00
Pastoral Care	\$4,290.11	\$4,304.42	\$17,358.87	\$17,217.68	\$318.04	\$51,653.00
Membership	\$2,577.84	\$2,744.92	\$10,762.69	\$10,979.68	\$2,734.48	\$32,939.00
Adult Education	\$0.00	\$185.00	\$1,100.00	\$740.00	\$700.00	\$2,220.00
Services & Sacraments	\$229.55	\$40.83	\$283.25	\$163.32	\$251.74	\$490.00
Fellowship	\$125.97	\$57.50	\$453.68	\$230.00	\$630.11	\$690.00
Music	\$6,355.76	\$7,080.17	\$27,041.75	\$28,320.68	\$8,948.50	\$84,962.00
General & Administrative	\$15,715.67	\$20,925.74	\$73,741.72	\$78,402.96	\$78,745.63	\$230,109.00
Stewardship	(\$9.00)	\$203.75	(\$113.00)	\$815.00	\$218.77	\$2,445.00
Church Property	\$29,274.95	\$22,352.16	\$101,519.42	\$95,898.64	\$85,625.61	\$258,211.00
Pageant	\$0.00	\$0.00	\$0.00	\$0.00	(\$535.50)	\$1,490.00
Capital Reserve	\$1,614.50	\$1,614.50	\$6,458.00	\$6,458.00	\$6,664.67	\$19,374.00
Long Range Plan Funds	\$0.00	\$0.00	\$0.00	\$0.00	\$0.00	\$0.00
Total Expenses	\$104,558.73	\$103,516.90	\$424,826.24	\$427,257.60	\$427,267.22	\$1,231,931.00
Net Total	(\$7,501.05)	\$14,728.10	(\$14,738.62)	(\$23,412.60)	\$3,559.02	\$0.00

Month-to-date, Through April 2008

Accounts	MTD Actual (This Year)	MTD Budget (This Year)	YTD Actual (This Year)	YTD Budget (This Year)	YTD Actual (Last Year)	Annual Budget (This Year)
Revenues						
9105 - Current Pledge Contributions	\$66,588.90	\$95,000.00	\$324,188.32	\$331,000.00	\$315,953.15	\$975,000.00
9107 - Non-Pledge Contributions	\$6,513.00	\$7,000.00	\$20,283.75	\$25,000.00	\$57,773.00	\$106,636.00
9109 - Pledge Overage Contributions	\$1,335.00	\$500.00	\$7,705.00	\$500.00	\$1,563.84	\$15,000.00
9110 - Prior Year Pledge	\$0.00	\$0.00	\$2,692.00	\$2,500.00	\$2,655.00	\$2,500.00
9115 - Loose Offering	\$816.50	\$2,200.00	\$2,721.86	\$4,270.00	\$4,248.99	\$10,000.00
9124 - Church School Offering	\$45.00	\$60.00	\$242.60	\$410.00	\$508.42	\$1,000.00
9130 - Women's Association	\$8,000.00	\$0.00	\$8,000.00	\$0.00	\$0.00	\$8,000.00
9135 - Building Fees	\$675.00	\$500.00	\$5,062.00	\$950.00	\$1,900.00	\$4,500.00
9142 - Nursery School	\$3,095.65	\$3,060.00	\$12,382.60	\$12,240.00	\$12,006.40	\$27,695.00
9145 - Interest Income	\$696.66	\$1,000.00	\$3,466.41	\$4,000.00	\$7,695.68	\$12,100.00
9147 - Housing Trust Income	\$6,250.00	\$6,250.00	\$6,250.00	\$6,250.00	\$8,608.82	\$25,000.00
9155 - Endowment Income	\$1,625.00	\$1,625.00	\$1,625.00	\$1,625.00	\$1,948.69	\$6,500.00
9157 - Endowment Income II	\$1,266.97	\$1,050.00	\$4,262.65	\$3,100.00	\$3,122.95	\$13,000.00
9169 - Mission Offerings	\$0.00	\$0.00	\$0.00	\$12,000.00	\$12,591.30	\$25,000.00
9185 - Easter	\$100.00	\$0.00	\$8,366.18	\$0.00	\$0.00	\$0.00
9190 - One Great Hour of Sharing	\$50.00	\$0.00	\$2,839.25	\$0.00	\$250.00	\$0.00
Total Revenues	\$97,057.68	\$118,245.00	\$410,087.62	\$403,845.00	\$430,826.24	\$1,231,931.00
Expenses						
Pastoral Expenses						
9302 - Salaries	\$10,575.44	\$10,575.42	\$42,309.33	\$42,301.68	\$107,467.08	\$126,905.00
9304 - Auto Expense	\$217.66	\$300.00	\$1,146.99	\$1,200.00	\$873.55	\$3,600.00
9306 - Expense Reimbursement	\$0.00	\$85.83	\$317.55	\$343.32	\$165.56	\$1,030.00
9308 - Annuities	\$2,940.26	\$2,940.25	\$11,761.02	\$11,761.00	\$11,783.28	\$35,283.00
9310 - Conferences / Continuing Education	\$470.53	\$333.33	\$1,006.39	\$1,333.32	\$4,539.88	\$4,000.00
9312 - Senior Minister Allowance	\$91.20	\$62.50	\$188.80	\$250.00	\$260.41	\$750.00
9314 - Housing Allowance	\$10,426.43	\$10,426.50	\$41,705.82	\$41,706.00	\$41,706.10	\$125,118.00
9316 - Assoc. Minister Allowance	\$15.00	\$83.33	\$330.58	\$333.32	\$1,193.21	\$1,000.00
9380 - Social Security	\$0.00	\$0.00	\$0.00	\$0.00	\$3,661.10	\$0.00
9382 - Insurance	\$3,619.53	\$3,619.50	\$14,478.12	\$14,478.00	\$16,766.30	\$43,434.00
9384 - Social Security Add On	\$1,519.67	\$1,519.67	\$6,165.62	\$6,078.68	\$6,383.91	\$18,236.00
Total Pastoral Expenses	\$29,875.72	\$29,946.33	\$119,410.22	\$119,785.32	\$194,800.38	\$359,356.00
Missions						
9450 - Mission Offering	\$150.00	\$0.00	\$11,455.43	\$12,000.00	\$12,581.30	\$25,000.00
9454 - Missions	\$7,740.25	\$7,740.25	\$30,961.00	\$30,961.00	\$32,786.00	\$92,883.00
Total Missions	\$7,890.25	\$7,740.25	\$42,416.43	\$42,961.00	\$45,367.30	\$117,883.00
Children's Ministry						
9464 - Salaries-CM	\$2,407.64	\$2,350.00	\$9,630.56	\$9,400.00	\$0.00	\$27,503.00
9466 - SS-CM	\$184.18	\$175.33	\$736.72	\$701.32	\$0.00	\$2,104.00
9468 - Spiritual Formation	\$575.25	\$135.00	\$575.25	\$540.00	\$331.05	\$1,620.00
9472 - Teacher Training & Appreciation	\$0.00	\$41.67	\$0.00	\$166.68	\$74.77	\$500.00
9476 - Cradle/Toddler Supplies	\$0.00	\$58.33	\$0.00	\$233.32	\$228.79	\$700.00
9488 - Fellowship	\$47.96	\$83.33	\$47.96	\$333.32	\$59.82	\$1,000.00
9490 - Education & Spiritual Formation	\$11.78	\$150.00	\$229.00	\$600.00	\$840.01	\$1,800.00
9494 - Mission & Outreach	\$139.28	\$16.67	\$139.28	\$66.68	\$5.95	\$200.00
9496 - Childcare	\$0.00	\$50.00	\$0.00	\$200.00	\$0.00	\$600.00
Total Children's Ministry	\$3,366.09	\$3,060.33	\$11,358.77	\$12,241.32	\$1,540.39	\$36,027.00
Confirmation & Youth Ministry						
9526 - Salaries-CY	\$2,525.00	\$2,525.00	\$10,100.00	\$10,100.00	\$0.00	\$25,250.00
9528 - SS-CY	\$193.16	\$161.00	\$772.65	\$644.00	\$0.00	\$1,932.00

Glenview Community Church
Analysis of Revenues & Expenses - Detail Portrait 2008

Month-to-date, Through April 2008

Accounts	MTDActual (This Year)	MTDBudget (This Year)	YTDActual (This Year)	YTD Budget (This Year)	YTDActual (Last Year)	Annual Budget (This Year)
9530 - Jr High- Confirmation	\$20.12	\$154.17	\$445.21	\$616.68	\$261.81	\$1,850.00
9532 - Jr High - Social	\$0.00	\$33.33	\$194.24	\$133.32	\$109.43	\$400.00
9536 - Sr High - Education	\$249.11	\$170.83	\$726.40	\$683.32	\$378.71	\$2,050.00
9538 - Sr High - Social	\$263.93	\$216.67	\$795.94	\$866.68	\$507.15	\$2,600.00
Total Confirmation & Youth Ministry	\$3,251.32	\$3,261.00	\$13,034.44	\$13,044.00	\$1,257.10	\$34,082.00
Pastoral Care						
9550 - Salaries-PN	\$4,244.44	\$4,244.42	\$16,977.76	\$16,977.68	\$0.00	\$50,933.00
9552 - Pastoral Care Board	\$45.67	\$60.00	\$381.11	\$240.00	\$318.04	\$720.00
Total Pastoral Care	\$4,290.11	\$4,304.42	\$17,358.87	\$17,217.68	\$318.04	\$51,653.00
Membership						
9572 - Salaries-Mbr	\$2,313.00	\$2,313.00	\$9,148.83	\$9,252.00	\$0.00	\$27,756.00
9574 - SS-Mbr	\$122.84	\$176.92	\$493.09	\$707.68	\$0.00	\$2,123.00
9576 - Membership	\$142.00	\$255.00	\$1,120.77	\$1,020.00	\$2,734.48	\$3,060.00
Total Membership	\$2,577.84	\$2,744.92	\$10,762.69	\$10,979.68	\$2,734.48	\$32,939.00
Adult Education						
9602 - Program	\$0.00	\$166.67	\$1,100.00	\$666.68	\$700.00	\$2,000.00
9614 - Miscellaneous	\$0.00	\$5.83	\$0.00	\$23.32	\$0.00	\$70.00
9616 - Literature & Library	\$0.00	\$12.50	\$0.00	\$50.00	\$0.00	\$150.00
Total Adult Education	\$0.00	\$185.00	\$1,100.00	\$740.00	\$700.00	\$2,220.00
Services & Sacraments						
9624 - Sacred Services	\$229.55	\$40.83	\$283.25	\$163.32	\$251.74	\$490.00
Total Services & Sacraments	\$229.55	\$40.83	\$283.25	\$163.32	\$251.74	\$490.00
Fellowship						
9636 - Special Functions	\$125.97	\$45.00	\$453.68	\$180.00	\$630.11	\$540.00
9640 - Miscellaneous	\$0.00	\$12.50	\$0.00	\$50.00	\$0.00	\$150.00
Total Fellowship	\$125.97	\$57.50	\$453.68	\$230.00	\$630.11	\$690.00
Music						
9648 - Salaries-Music	\$5,749.43	\$5,453.00	\$22,081.05	\$21,812.00	\$0.00	\$65,436.00
9650 - SS-Music	\$439.82	\$417.17	\$1,689.18	\$1,668.68	\$0.00	\$5,006.00
9652 - General - Instrumentalists	\$0.00	\$333.33	\$900.00	\$1,333.32	\$4,050.00	\$4,000.00
9654 - General - Organ & Piano Care	\$0.00	\$325.00	\$1,095.18	\$1,300.00	\$3,037.50	\$3,900.00
9656 - General - Cleaning Robes	\$0.00	\$16.67	\$0.00	\$66.68	\$0.00	\$200.00
9660 - General - Sub. Organist	\$225.00	\$83.33	\$225.00	\$333.32	\$250.00	\$1,000.00
9666 - Chancel Choir - Music	(\$78.59)	\$208.33	\$408.74	\$833.32	\$787.95	\$2,500.00
9668 - Chancel Choir - Misc.	\$20.10	\$43.33	\$90.10	\$173.32	\$293.00	\$520.00
9670 - Organ Music	\$0.00	\$41.67	\$309.50	\$166.68	\$0.00	\$500.00
9772 - Bell Choir - Music	\$0.00	\$41.67	\$0.00	\$166.68	\$43.81	\$500.00
9780 - Children's Choir - Music	\$0.00	\$66.67	\$20.00	\$266.68	\$263.24	\$800.00
9782 - Children's Choir - Misc.	\$0.00	\$16.67	\$0.00	\$66.68	\$0.00	\$200.00
9784 - Copyright Expenses	\$0.00	\$33.33	\$223.00	\$133.32	\$223.00	\$400.00
Total Music	\$6,355.76	\$7,080.17	\$27,041.75	\$28,320.68	\$8,948.50	\$84,962.00
General & Administrative						
9822 - Postage (except B'dcaster)	(\$24.00)	\$666.67	\$3,294.18	\$2,666.68	\$3,389.00	\$8,000.00
9830 - Social Security	\$802.31	\$823.08	\$3,211.95	\$3,292.32	\$3,139.14	\$9,877.00
9832 - Office Staff Salaries	\$10,776.26	\$10,758.75	\$43,105.04	\$43,035.00	\$41,034.84	\$129,105.00
9834 - Payroll Service	\$216.93	\$231.67	\$1,161.07	\$926.68	\$865.79	\$2,780.00
9836 - Telephone	\$746.93	\$541.67	\$2,359.89	\$2,166.68	\$2,176.76	\$6,500.00
9838 - Stationery & Supplies	\$533.11	\$958.33	\$4,810.03	\$3,833.32	\$4,653.87	\$11,500.00
9840 - Equip. Maintenance! Repair	\$547.19	\$1,066.67	\$2,991.73	\$4,266.68	\$3,536.17	\$12,800.00
9842 - Broadcaster	\$0.00	\$333.33	\$1,911.00	\$1,333.32	\$1,983.54	\$4,000.00
9844 - Financial Review	\$0.00	\$125.00	\$0.00	\$500.00	\$0.00	\$1,500.00

Glenview Community Church
 Analysis of Revenues & Expenses - Detail Portrait 2008
 Month-to-date, Through April 2008

Accounts	MTD Actual (This Year)	MTD Budget (This Year)	YTD Actual (This Year)	YTD Budget (This Year)	YTD Actual (Last Year)	Annual Budget (This Year)
9846 - Communications/Promotions	\$45.50	\$83.33	\$1,372.70	\$333.32	\$1,853.00	\$1,000.00
9848 - Kitchen	\$88.00	\$125.00	\$556.63	\$500.00	\$319.20	\$1,500.00
9850 - Insurance	\$0.00	\$5,000.00	\$6,922.71	\$14,700.00	\$14,891.74	\$39,000.00
9852 - Miscellaneous	\$1,943.45	\$8.33	\$1,951.20	\$33.32	\$100.77	\$100.00
9854 - Office Equipment Purchase	\$0.00	\$188.33	\$0.00	\$753.32	\$717.36	\$2,260.00
9856 - Bank Fees	\$39.99	\$15.58	\$93.59	\$62.32	\$84.45	\$187.00
Total General & Administrative	\$15,715.67	\$20,925.74	\$73,741.72	\$78,402.96	\$78,745.63	\$230,109.00
Stewardship						
9802 - Offering Envelopes	(\$9.00)	\$37.50	(\$113.00)	\$150.00	\$142.77	\$450.00
9803 - Stationery	\$0.00	\$52.08	\$0.00	\$208.32	\$21.40	\$625.00
9804 - Postage	\$0.00	\$79.17	\$0.00	\$316.68	\$54.60	\$950.00
9806 - Celebration	\$0.00	\$1.67	\$0.00	\$6.68	\$0.00	\$20.00
9810 - Miscellaneous	\$0.00	\$33.33	\$0.00	\$133.32	\$0.00	\$400.00
Total Stewardship	(\$9.00)	\$203.75	(\$113.00)	\$815.00	\$218.77	\$2,445.00
Church Property						
9862 - Facility Staff-Salaries	\$11,730.38	\$11,288.58	\$44,913.37	\$45,154.32	\$43,984.20	\$135,463.00
9864 - Social Security	\$833.62	\$863.58	\$3,117.65	\$3,454.32	\$3,364.79	\$10,363.00
9866 - Health & Accident Ins.	\$0.00	\$0.00	\$0.00	\$0.00	\$7,978.00	\$0.00
9870 - Electricity	\$1,829.08	\$1,780.00	\$8,311.80	\$7,370.00	\$8,285.22	\$25,500.00
9872 - Water	\$0.00	\$650.00	\$1,458.13	\$1,290.00	\$857.64	\$2,600.00
9874 - N. I. Gas	\$10,267.44	\$3,080.00	\$17,950.39	\$17,470.00	\$5,832.79	\$25,705.00
9876 - Building Repair	\$0.00	\$0.00	\$0.00	\$0.00	\$3,476.67	\$0.00
9878 - Building Repair and Maintenance	\$2,188.28	\$2,200.00	\$13,201.16	\$10,000.00	\$1,261.93	\$27,500.00
9880 - Maintenance Contracts	\$2,045.36	\$1,900.00	\$11,113.25	\$8,800.00	\$8,739.24	\$24,000.00
9882 - Scavenger	\$380.79	\$333.33	\$1,453.67	\$1,333.32	\$1,331.48	\$4,000.00
9884 - Furn., Fixt., Equip. Purchase	\$0.00	\$256.67	\$0.00	\$1,026.68	\$513.65	\$3,080.00
Total Church Property	\$29,274.95	\$22,352.16	\$101,519.42	\$95,898.64	\$85,625.61	\$258,211.00
Pageant						
9912 - Pageant	\$0.00	\$0.00	\$0.00	\$0.00	(\$535.50)	\$1,490.00
Total Pageant	\$0.00	\$0.00	\$0.00	\$0.00	(\$535.50)	\$1,490.00
Capital Reserve						
9910 - Capital Reserve Expense	\$1,614.50	\$1,614.50	\$6,458.00	\$6,458.00	\$6,664.67	\$19,374.00
Total Capital Reserve	\$1,614.50	\$1,614.50	\$6,458.00	\$6,458.00	\$6,664.67	\$19,374.00
Total Expenses	\$104,558.73	\$103,516.90	\$424,826.24	\$427,257.60	\$427,267.22	\$1,231,931.00
Net Total	(\$7,501.05)	\$14,728.10	(\$14,738.62)	(\$23,412.60)	\$3,559.02	\$0.00

Date: 5/13/2008
Time: 10:03:20 AJ

Glenview Community Church
Monthly Balance Sheet Year-to-date,
Through April 2008

Page: 1

Accounts

Assets

Current Assets

Cash

1010 - Operating Account \$62,693.42
1200 - Special Petty Cash Fund \$625.00

Total Cash \$63,318.42

Investments

1110 - Housing Trust \$440,333.00
1120 - Merrill Lynch Govt. MF \$596,211.35
1130 - Nursery School Vanguard \$113,034.25
1140 - Romeiser Trust Account \$167,661.00
1160 - Endowment \$184,425.00
1180 - Nursery School GSB CD#323510 \$28,924.65
1185 - Endowment Fund II \$608,303.32
1190 - Nursery School GSB CD#323512 \$29,889.76

Total Investments \$2,168,782.33

Prepaid Expenses

\$17,281.22

\$2,249,381.97

Total Current Assets

Fixed Assets

1770 - Church Land \$100,126.50
1790 - Church Garage & Contents \$10,074.00
1800 - Church Building \$5,430,585.00
1810 - Church Furnishings \$426,130.00
1815 - Office Equipment \$91,458.00
1816 - Art & Music Collections \$50,400.00
1817 - Organ \$896,000.00
1820 - Canoes \$1,200.00
1825 - Accumulated Depreciation (\$742,695.00)

Total Fixed Assets \$6,263,278.50

Total Assets \$8,512,660.47

Liabilities, Fund Principal, & Restricted Funds

Liabilities

Fixed Assets

0001 - Represented by Fixed Assets \$6,263,278.50

Total Fixed Assets \$6,263,278.50

Total Liabilities

\$6,263,278.50

Fund Principal

0002 - Beginning Balance-General Fund \$64,862.76

Excess Cash Received (\$14,738.62)

Total Fund Principal and Excess Cash Received \$50,124.14

Restricted Funds

Total Temporarily Restricted Total \$797,043.79

Permanently Restricted Total \$1,402,214.04

Restricted Funds \$2,199,257.83

Total Liabilities, Fund Principal, & Restricted Funds \$8,512,660.47

PLEDGE CONTRIBUTION REPORT

MONTH	<u>2007 PLEDGE CONTRIBUTIONS</u>	<u>2008 PLEDGE CONTRIBUTIONS</u>
January	\$ 56,063.34	\$ 62,768.86
February	\$ 80,293.16	* \$ 102,471.29
March	\$ 85,668.95	** \$ 92,359.27
April	\$ 93,927.70	\$ 66,588.90
May	\$ 56,778.54	
June	\$ 67,220.94	
July	\$ 95,823.69	
August	\$ 50,718.28	
September	\$ 66,794.16	
October	\$ 84,059.35	
November	\$ 61,851.32	
December	\$ 130,154.13	
Actual Pledge Contrib.	\$ 929,353.56	\$ 324,188.32
Budget Pledge Contrib.	\$ 1,024,000.00	\$ 975,000.00
 Actual % to Budget	 90.76%	 33.25%

*Changed to reflect \$25000 pledge from non-pledge (9107) in Feb. report per EB

**Changed to reflect total \$1000 addition from changes requested by members

Glenview Community Church - Comparative Revenues

<u>Month</u>	<u>2008</u>	<u>2007</u>	<u>2006</u>	<u>2005</u>	<u>2004</u>	<u>2003</u>	<u>2002</u>
January	\$ 80,188.95	\$ 74,594.18	\$ 106,429.51	\$ 122,067.18	\$ 70,691.23	\$ 87,871.50	\$ 81,890.13
February	\$ 116,974.37	121,014.19	72,660.20	77,523.70	77,447.10	69,717.22	69,026.34
March	\$ 115,866.62	107,626.66	121,192.76	88,782.22	99,044.62	91,531.38	104,225.02
April	\$ 97,057.68	127,591.21	130,592.35	117,440.47	125,177.01	93,994.41	66,003.07
May		79,834.93	102,090.47	133,720.82	110,464.01	56,528.14	145,926.63
June		80,857.74	70,470.20	70,942.58	74,399.77	98,079.80	100,260.75
July		105,520.31	96,205.06	73,692.69	85,423.69	69,153.58	63,419.69
August		60,077.24	67,448.52	47,410.46	69,026.46	57,739.09	45,758.87
September		84,025.61	130,400.60	81,005.37	61,418.36	82,507.01	82,014.14
October		113,894.93	114,746.48	100,506.42	99,606.58	105,962.66	104,972.10
November		92,347.73	99,354.96	85,391.80	61,320.78	93,377.26	68,403.91
December		199,794.80	173,460.38	157,802.19	108,993.97	130,495.10	130,403.62
Total Actual	\$ 410,087.62	\$1,247,179.53	\$ 1,285,401.49	\$ 1,154,885.90	\$ 1,043,013.58	\$ 1,058,457.15	-
Budget	\$1,231,931.00	\$ 1,253,060.00	\$ 1,184,026.08	\$ 1,137,000.00	\$ 1,047,936.00	\$ 1,108,823.00	\$ 1,062,097.27
Percent	~	~	~	<u>101.6%</u>	~	~	alli

**UCC Nationwide Church Survey
1995-2005
10-Year Attendance Change
(2,919 Churches Surveyed)**

