

Executive Board Agenda
December 15, 2009
7:00 PM
Mayflower Room

- I. Opening Reflection – Bob Kappus
- II. Clergy Comments
- III. *Consent Agenda
 - A. November 17 Executive Board Minutes
 - B. Reports/ Minutes from Ministers, Boards and Others
- IV. Committee Reports
 - A. Operating Committee: Strategic Space Planning
- V. Treasurer's Report
- VI. Board Reports
 - A. Finance: 2010 Budget Planning
 - B. Stewardship: 2009 Campaign Progress & Resource Development Committee Update
 - C. Children's: Treasure Chest Report
- VII. Selected Pending Matters
 - A. Board Walk Pictures Repeat Request
 - B. Recognition of Sally's Ministry
 - C. Policies/guidelines for Fund-raising Groups
 - i. Use of Building/Infrastructure
 - ii. Special Offerings
- VIII. Congregational Comments
- IX. Adjournment & Lord's Prayer

* May need Executive Board approval

Meeting Reminders:

Planning Committee Mtg.: December 16; 7:00 PM (Founders)
Leadership Committee Mtg: January 31; 11:30 AM (Founders)
Executive Board Meeting: January 26; 7:00 PM (Mayflower)
PMRC Meeting: Date TBD; 7:00 PM (TBD)

**EXECUTIVE BOARD MINUTES
GLENVIEW COMMUNITY CHURCH
17 November 2009**

- I. Call to Order:** The meeting was called to order in the Mayflower Room at 7:05 PM by Moderator, Constance Filling. The roll was recorded silently by the clerk.

Present: Howard Roberts, Pam Keckler, Constance Filling, Tom Amos, Lloyd Bettis, Rob Hevey, Beryl Bills, Kara Clark, Bob Kappus, Judy Fellingham, Scott Lothian, Pam Riedy, Mark Sawires, Carolyn Brown, Glenn Davis, Laura Heyser, Bud Kinzalow, Phyllis Scott for Barb Lothian, Betsy Martin, John Demler for Steve Morgan, Ray Scott, Tracy Sawires, Sally Thuresson, Kim Yagelski.

Excused: Sally Iberg, David Aki, Christine Foley, Chris Calandra

Guests: Steve Brown, Margaret Lutz, Susan Mann, Jane Sanderson, John Tillman

Opening Reflection was given by Kara Clark.

- II. Clergy Comments:** complete reports from Howard Roberts, Pam Keckler and Sally Iberg are included in the Executive Board Packet dated November 17, 2009. Howard announced that Karen Aeschlimann will be retiring as Cradle/Toddler Room Supervisor on January 1, 2010.
- III. Consent Agenda and Requests:**
Consent Agenda Items

- A.** Minutes from the September 22 Executive Board meeting and the September 27 Special Congregational meeting
B. Minutes and Reports from Ministers, Boards, and Others

A motion was made, seconded, and passed by those present and voting to approve the Consent Agenda as presented.

Requests: The following approvals were requested:

- A.** Boy Scouts to sell tickets for February 2010 Pancake Breakfast; tickets to be sold at the end of January and in early February 2010. A motion was made, seconded, and passed by those present and voting to approve the ticket sales.
B. Kerry Karth's 7th grade Confirmation Class to solicit donations from Church Boards (\$10 per Board) in order to purchase toys for Toys for Tots. (A free will collection among Executive Board members netted \$100.) A motion was made, seconded, and passed by those present and voting to approve the request.
C. Mission Board and Chapter 20 to offer Mission/Sock Tree and Blanket sales (@\$8 each) to benefit The Night Ministry. A motion was made, seconded, and passed by those present and voting to approve the mission giving effort.
D. Chapter 7 to sponsor pot luck supper and Family Trivia Night on February 28, 2010. A canned goods collection will be taken to benefit area Food Pantries.
E. Music Board to sell GCC Chancel Choir Christmas Music CD on December 6, 13 and 20, 2009. A motion was made, seconded, and passed by those present and voting to approve the CD sales.

IV. Committee Reports:

- A. Communications Committee:** Constance Filling reported that a mailing with GCC Advent Season offerings and programs will be sent to members, friends of GCC and past visitors.
B. Planning Committee: Following a request to review the relevancy of the current GCC Meeting Ground Rules and Behavioral Covenant, the Planning Committee composed of the At-large Executive Board members, ministers and moderators, developed the attached *Draft* document for review and discussion. The proposed document relative to the current Ground Rules and Behavioral Covenant is judged to:
- Impart a more personal ("I will") commitment
 - Provide more specificity through contrasting statements; diametrically opposed statements
 - Be issue focused
 - Preserve the current ground rules and covenant document
 - Set an example for all GCC interactions and proceedings.

The document will be reviewed further at the December 15 Executive Board meeting.

- C. **PMRC:** Tom Amos, chair, announced that the PMRC has had their initial meeting. Written procedures and plans for future PMRC meetings are being developed. The next meeting is scheduled for December 12 from 9-11 am.
- D. **Leadership Committee:** Lloyd Bettis, chair, reported that the Leadership Committee will present at the Mid-Winter Congregational Meeting, the following nominees: Rob Hevey as Church Treasurer and Beryl Bills as Church Clerk, each to be elected for a term of one year.

- IV. **Treasurer's Report:** Rob Hevey, Church Treasurer, reviewed the year-to-date and month of October financials. In October revenues fell short of budgeted revenues and October expenses exceeded budgeted expenses for the month for a net loss of \$6,462 for October. Year to date, actual expenses have exceeded actual revenues, resulting in a deficit balance in the General Fund of \$41,034.

V. Board Reports

- A. **Finance Board:** John Demler reporting for Steve Morgan, chair, confirmed that the 2010 Budget continues to be refined, including current Stewardship figures and PTF Group A recommendations as approved by the Executive Board. The proposed budget will be presented for discussion at the December Executive Board meeting.
- B. **Stewardship Board:** Sally Thuresson, chair, reported results of the 2010 Stewardship Campaign *My Faith – My Church – My Commitment*. through November 17, as shown below:

| Date | Number of Pledges received | Total dollars pledged | % Change over 2009* |
|-------|----------------------------|-----------------------|---------------------|
| 09/17 | 72 | \$248,467 | 14.0% inc. |
| 10/26 | 372 | \$866,666 | 10.2% inc. |
| 11/17 | 454 | \$949,028 | 9.6% inc. |

* Comparison between those pledging in both 2009 and 2010.

Resource Development Committee (RDC): John Tillman on behalf of the RDC reviewed the committee's goals and plan for 2010. It is the mission and goal of the RDC to support the Stewardship pledge drive as well as create and implement creative, new methods of fund raising for GCC that focus on "unity, growth and renewal" among members and the broader community. The RDC asked the Finance Board to include \$25,000 of additional revenue in the 2010 budget related to this sub committee. Proposed projects and fund raising activities to meet this goal include the following:

- Rummage sale
 - American Girl Fashion Show
 - Affinity Credit Card Program
 - Speaker series
 - Pancake breakfasts
 - Casino night
- C. **Music Board:** Ray Scott, chair, reported that to date \$11 thousand have been raise to offset organ rededication expenses. Questions and concerns were raised regarding the endpoint of the funding efforts and what impact, if any, these fund raising activities may have had on the Stewardship campaign.
 - D. **Confirmation and Youth Board:** Chair, Kim Yagelski requested assistance from Board members during Pageant rehearsals and on Pageant Sunday, December 6, to assure the safety of the youth.

V. Selected Pending Matters

- A. Recognition of Sally Iberg's Ministry at GCC:** Board members were reminded of the celebrations of gratitude for Sally's ministry which will be held on November 22 and December 27. As a part of the celebration, a "love offering" and memory book items are being collected until December 13.
- B. Board Picture Gallery:** Board chairs were reminded of the need to update their respective Board's photo which hangs in the main hallway between the office and sanctuary
- C. Open and Affirming Task Force:** Beryl Bills provided a review on the steps taken by the task force to complete the ONA process and proposed next steps:
 - At the May 19, 2009 Executive Board meeting, the task force's proposed ONA statement was adopted unanimously by those voting.
 - The statement was presented to the UCC and approved by that body in June 2009.
 - Next steps:
 - Develop and distribute an informational brochure with FAQ's
 - Hold at least 2 informational meetings with the congregation
 - ONA vote at May 2010 Congregational Meeting.
- D. Pledging Confidentiality Discussion:** postponed to the December Executive Board.

IX. Adjournment: The meeting was adjourned at 8:55 pm with the unison saying of the Lord's Prayer.

Respectfully submitted,
Beryl Bills - Church Clerk

Next Executive Board Meeting, Tuesday, December 15, at 7:00 PM in the Mayflower Room

Glenview Community Church
Groundrules and Behavioral Covenant

DRAFT

8 November 2009

*As caring members of GCC, we accept and agree to abide by the groundrules stated below. Further, we commit to holding each other accountable for behaving in accordance with these groundrules during all our meetings or interactions. We believe that **individually**, we should endeavor to follow the Golden Rule to "...Do unto others as you would have others do unto you..."*

I Will:

Focus on issues.

Listen carefully, respectfully consider alternative points of view and stay open to influence and inquiry.

Speak calmly and respectfully in presenting my views or responding to questions.

Think for the benefit of GCC and help the group achieve its objectives through inclusive

Focus on the future of GCC while respecting our rich history as a church.

Apologize if my words or thoughts were hurtful or perceived as disrespectful.

Speak up if I believe these ground rules are not being followed.

Behave in a manner consistent with the role model that I am to others in the church.

I Will NOT:

Make the issues personal.

Interrupt others or fail to recognize the contributions of others.

Respond angrily to other's comments or fail to seek to understand the other person's perspective first.

Focus on my interests only.
Think/speak in terms of "us" versus solutions.
"them."

Be resistant to new ideas for GCC.

Disregard how others receive my comments.

Ignore behavior I believe is inappropriate.

Speak negatively of others when they are not present.
Bring issues for group discussion in order to punish or embarrass others.

Sunday Service Attendance 2007 - 2009

| | <u>2007</u> | | | | <u>2008</u> | | | | <u>2009</u> | | | |
|------|---------------|-------|-------------------|----------|---------------|---------|-------------------|-------------------|---------------|--------------|-------------------|-----------|
| Mon | 8:30/ 9:30 | 10:30 | Total | AVG | 8:30/ 9:30 | 10:30 | Total | AVG | 8:30/ 9:30 | 10:30 | Total | AVG |
| Jan. | 91 | 235 | 364 | | 206 | | 206 | | 151 | | 151 | |
| | 77 | 206 | 248 | | 68 | 242 | 310 | | 58 | 212 | 270 | |
| | 108 | 190 | 298 | | 82 | 179 | 261 | | 92 | 235 | 327 | |
| | 133 | 255 | 388 | | 314 | | 314 | | 323 | | 323 | |
| | | | <u>325</u> | | | | <u>273</u> | | | | <u>268</u> | |
| Feb | 103 | 251 | 354 | | 95 | 218 | 313 | | 86 | 277 | 363 | |
| | 91 | 250 | 341 | | 89 | 214 | 303 | | 111 | 234 | 345 | |
| | 105 | 307 | 412 | | 66 | 164 | 230 | | 98 | 263 | 361 | |
| | 58 | 143 | 201 | | 100 | 257 | 357 | | 73 | 223 | 296 | |
| | | | <u>327</u> | | | | <u>301</u> | | | | <u>341</u> | |
| Mar | 116 | 255 | 371 | | 63 | 269 | 332 | | 69 | 238 | 307 | |
| | 114 | 241 | 355 | | 71 | 294 | 365 | | 47 | 213 | 260 | |
| | 106 | 242 | 348 | | 123 | 404 | 527 | | 74 | 243 | 317 | |
| | 87 | 208 | 295 | | | | | | 82 | 274 | 356 | |
| | | | <u>342</u> | | | | | | 27 | 123 | 150 | |
| | | | | | 393 | 466 | 859 | Easter | | | | |
| | | | | | 14 | | | Friday Noon Hour | | | | |
| | | | | | 62 | | | Maundy Thurs. | | | | |
| | | | | | 85 | | | Good Fri. | | | | |
| | | | | | 58 | 131 | 189 | <u>454</u> | | | | |
| Apr | 138 | 378 | 519 | | 79 | 292 | 371 | | 120 | 270 | 390 | |
| | 686 | 686 | 1372 | Easter | 240 | 457 | 697 | Godspell | | 73 | Maundy Thursday | |
| | 148 | 390 | 538 | | 89 | 226 | 315 | | 113 | Good Friday | | |
| | 191 | 262 | 453 | | 61 | 367 | 428 | confirm. | 447 | 757 | 1204 | East. |
| | 118 | 405 | 523 | Confirm. | | | | | 112 | 363 | 475 | Musical |
| | | | <u>680</u> | | | | <u>453</u> | | 60 | 451 | 511 | Confirm |
| | | | | | | | | | | | <u>645</u> | |
| May | 96 | 166 | 262 | | 143 | 232 | 375 | Choir | 41 | 423 | 464 | Choir |
| | 81 | 191 | 272 | | 81 | 192 | 273 | | 98 | 377 | 475 | Kids Sing |
| | 103 | 454 | 557 | Vote | 81 | 304 | 385 | | 69 | 118 | 187 | |
| | 106 | | 106 | | 131 | begin 1 | 9:30 service | | 99 | begin 1 | 9:30 service | |
| | | | <u>299</u> | | | | <u>291</u> | | 194 | Youth Sunday | | |
| | | | | | | | | | | | <u>284</u> | |
| Jun | 309 | | 309 | | 244 | | 244 | | 214 | | 214 | |
| | 198 | | 198 | | 152 | | 152 | | 143 | | 143 | |
| | 132 | | 132 | | 164 | | 164 | | 127 | | 127 | |
| | 133 | | 133 | | 132 | | 132 | | 156 | | 156 | |
| | | | <u>193</u> | | 147 | | 147 | | | | <u>160</u> | |
| | | | | | | | <u>168</u> | | | | <u>160</u> | |

Easter Maundy Thurs. 99
 Easter Good Friday 156

| | | <u>2007</u> | | | | <u>2008</u> | | | | <u>2009</u> | | | |
|-----|---------------|-------------|-------|------------|---------------|-------------|-------|------------|---------------|-------------|-------|------------|--|
| Mon | 8:30/ 9:30 | 10:30 | Total | AVG | 8:30/ 9:30 | 10:30 | Total | AVG | 8:30/ 9:30 | 10:30 | Total | AVG | |
| Jul | 167 | | 167 | | 139 | | 139 | | 98 | | 98 | | |
| | 120 | | 120 | | 159 | | 159 | | 136 | | 136 | | |
| | 131 | | 131 | | 164 | | 164 | | 129 | | 129 | | |
| | 202 | | 202 | | 155 | | 155 | | 172 | | 172 | | |
| | 167 | | 167 | | | | | | | | | | |
| | | | | <u>157</u> | | | | <u>154</u> | | | | <u>131</u> | |
| Aug | 213 | | 213 | | 160 | | 160 | | 121 | | 121 | | |
| | 191 | | 191 | | 146 | | 146 | | 101 | | 101 | | |
| | 180 | | 180 | | 200 | | 200 | | 137 | | 137 | | |
| | 132 | | 132 | | 199 | | 199 | | 161 | | 161 | | |
| | | | | | 123 | | 123 | | 130 | | 130 | | |
| | | | | <u>179</u> | | | | <u>166</u> | | | | | |
| Sep | 132 | | 132 | | 284 Rally | | 284 | | 114 | | 114 | | |
| | 114 | 254 | 368 | Rally | 43 | 183 | 226 | | 290 | | 290 | | |
| | 81 | 230 | 311 | | 51 | 161 | 212 | | 53 | 281 | 334 | | |
| | 103 | 181 | 284 | | 69 | 208 | 277 | | 82 | 299 | 381 | | |
| | 83 | 208 | 291 | | | | | | | | | | |
| | | | | <u>276</u> | | | | <u>250</u> | | | | <u>238</u> | |
| Oct | 121 | 270 | 392 | | 96 | 386 | 482 | | 92 | 283 | 375 | | |
| | 78 | 233 | 311 | | 76 | 178 | 254 | | 59 | 224 | 283 | | |
| | 110 | 217 | 327 | | 77 | 247 | 324 | | 153 | 337 | 490 | | |
| | 90 | 230 | 320 | | 68 | 235 | 304 | | 60 | 199 | 259 | | |
| | | | | <u>337</u> | | | | <u>340</u> | | | | <u>352</u> | |
| Nov | 98 | 221 | 319 | | 76 | 287 | 363 | | 76 | 230 | 306 | | |
| | 95 | 183 | 278 | | 85 | 205 | 290 | | 53 | 194 | 247 | | |
| | 82 | 272 | 354 | | 55 | | | | 111 | | 111 | | |
| | 171 | | 171 | | 114 | 308 | 422 | | 109 | 243 | 352 | | |
| | | | | | 119 | | 119 | | 173 | | 173 | | |
| | | | | <u>281</u> | | | | <u>250</u> | | | | <u>239</u> | |
| Dec | 10:30 | 1:30 | 4:00 | | 10:30 | 1:30 | 4:30 | | 470 | 236 | 526 | Pageant | |
| | 592 | 286 | 333 | 1211 | 486 | 379 | 484 | 1349 | | | | | |
| | 61 | 245 | 306 | | 116 | 278 | 394 | | | | | | |
| | 123 | 261 | 384 | | 50 | 187 | 237 | | | | | | |
| | 75 | 225 | 300 | | | | | | | | | | |
| | 4:30 | 7:30 | 11:00 | | 4:30 | 7:30 | 11:00 | | | | | | |
| | 552 | 67 | 497 | 1116 | 662 | 112 | 445 | 1219 | | | | | |
| | 172 | | 172 | | 120 | | 120 | | | | | | |
| | | | | <u>582</u> | | | | <u>664</u> | | | | | |

Senior Minister's Report

Executive Board

December 15, 2009

During the last month we had a wonderful celebration of Sally Iberg's ministry with us complete with the joy of the many contributions she has made to the lives of individuals and to the ministry of Glenview Community Church. Thank you to the Fellowship, Stewardship, Services and Sacraments, and Missions Outreach Boards and Sally's Sabbatical Committee for their assistance in this celebration. We also recognize the sadness and sorrow we are experiencing with the ending of her ministry with us. For some, this will become more intense in the weeks and months ahead when Sally is no longer with us. Included in the worship service on December 27th will be "Ending an Authorized Ministry" as we officially conclude our relationship minister/congregation relationship with Sally.

With the assistance of the Confirmation and Youth and Children's Boards we sent Rev. Pam Keckler on her sabbatical which began December 1, 2009. She will return to us on March 1, 2010.

One person, who has been a member of the congregation for 36 years, communicated with me how significant and important the baptism of Julia Patrick McGuire is to the life and ministry of Glenview Community Church. This member is especially appreciative of this celebration for Julia and her parents Michael McGuire and Christopher Patrick.

The 58th annual presentation of "The Nativity" occurred on December 6, 2009. We are indebted to Beth Raebel, a host of adult volunteers, and many children and youth for their many hours of work in preparing and presenting the Pageant.

Of course an integral part of the Pageant is the Chancel Choir who not only contributed significantly to the Pageant on December 6th but also led our worship services on December 13th presenting "The Seven Joys of Christmas." Thank you to Andy Lewis and Gary Wendt and members of the Chancel Choir for sharing their gifts with us on both of these Sundays.

Preparation is nearly complete for the final two Sunday worship services of the year as well as for the three Christmas Eve services. Your presence in worship and your encouragement to others to be present in worship encourages all members in our covenant relationship to grow personally and spiritually. Your presence also encourages people to grow in their worship of God and in their relationship with God and with one another. I look forward to seeing you in worship in the coming weeks.

I continue to have an amazing number of meetings each month and an increase in the amount of time needed to assist members in coping with a variety of personal needs and issues in their lives. The next two months pose possible particular challenges as I will be the only minister available to the congregation. Two of the moderators, Constance Filling and Lloyd Bettis, will be away the month of January. I may be calling on Tom Amos or a member of the Executive Board to assist me in case there are two pastoral needs occurring simultaneously.

Thank you for the time and energy you give to the ministry of Glenview Community Church. May the holiday season be a wonderful time of renewal and encounter with family and friends. May you experience God's love and care in new and fresh ways.

Howard W. Roberts

Glenview Community Church Adult Education Board Minutes

MEETING DATE/TIME/PLACE: Tuesday, December 8, 2009/ 7:00 pm/ Founders' Room

MEMBERS PRESENT: Marcy Blackwelder, Nick Bubnovich, Vicki Buzard, Chris Calandra, Doug Hively, Sally Sargent, Sally Schreiner

Members excused: Sheryl Long, Earle Shultz

Visitors: Howard Roberts

SUMMARY OF MEETING

Welcome: Chris Calandra

Visitors:

Howard Roberts came by to thank the board. We discussed the Adult Education Board's future in involvement in small group planning as well as the role of the board in the ongoing work of the church library.

Discussion Items:

1. Pledge overage monies: We will schedule Steven Morgan of the finance board to discuss the budgeting process and what is done with "extra" money should it be generated by the stewardship campaign.

2. Currently scheduled/planned programming:

December:

6—Pageant—No Adult Ed

13 PYF youth who attend Workcamp will discuss their experiences

20

27—*Christmas Weekend—No Adult Ed*

January:

3--*New Year's weekend—No Adult Ed*

10 Tentative speaker from Finance Board

17 Tentative CMS speaker for Missions

24 Tentative speaker from Stewardship or Missions Board

31 Tentative presentation by Rob Long on healthcare insurance (update on previous discussions)

February *Theme for the month: Literature*

7 Tentative book discussion—folks will read a book and then join in a discussion at Adult Ed—book to be announced

14 Allan Ruter and colleagues

21 Allan Ruter and colleagues

28 Nick Bubnovich—Baruch Spinoza, He Must Have Had it Right!

March:

7

14 Gretchen Grad—HOP Israel trip presentation (along with UCC Global Ministries)

21 Tom Aldrich: "A Pilgrimage to Turkey: Following in the Footsteps of Paul with Marcus Borg and John Dominick Crossan."

28 Tom Aldrich Part 2

April:

4 Easter Sunday—No Adult Ed

11 Ron Miller

18 Ron Miller

25 Tentative comparative religions speaker/discussion—maybe someone from Common Ground

3. Potential Speakers/Topics:

Other speakers suggested for regular Sunday morning Adult Education programming include:

A speaker from the Glenbrook Hospice

The president or other speaker from Chicago Theological Seminary

Per Hanson and Jason Ornduff—Durable Powers of Attorney

Mary Jane Huber—former GCC member and current seminary student at Garrett Theological Seminary

Kerygma or other formal Bible study curriculum

Formation of small group for intellectual/social contact during the 9:30-10:30 hour at GCC on Sundays

We adjourned at 8:30 with the Lord's Prayer.

MINUTES SUBMITTED ON: Wednesday, December 9, 2009 by Chris Calandra

NEXT BOARD MEETING SCHEDULED: Tuesday, January 12, 2010 at 7 pm in the Founders' Room.

Schedule for Minute-Taking and Devotions (Thank you to all)

November Nick Bubnovich

December Sally Sargent

January Marcy Blackwelder

February Vicki Buzard

March Sheryl Long

April Doug Hively

May Earle Earle Shultz

GLENVIEW COMMUNITY CHURCH BOARD MINUTES
CHILDREN'S BOARD

MEETING DATE: December 1,2009 Meeting called to order at 7: 10 p.m.

MEMBERS PRESENT: Laura Heyser, Kathy Lifton, Jim Yagelski, Shane Bill, Betsy Garvey, Sarah Taylor, Corey Barnes

MEMBERS EXCUSED: Terry Adams, Tracey Noe, Clark Bundy, Betsy Garvey, Sara Taylor

MEMBERED UNEXCUSED: Jennifer Nelson, Michelle Langenbach

Opening Prayer/Reflection Laura

Executive Board Meeting Laura
Reviewed notes from previous Executive Board Meeting. Each Board is asked to make a donation of \$1 0 for Toys for Tots. The Children's Board continues to advocate for an office and storage space for supplies and office needs.

The Leadership Board is looking for recommendations for Vice Moderator for next year. Give recommendations to Jim Yagelski.

Sunday School Report Kathy
Sunday School is running smoothly.

Treasure Chest was very successful. Donations included \$350 in gift cards, \$100 in cash and more than 100 toys. Some donations are still coming in. Kathy will contact Treasure Chest contact re: delivery/pick-up.

Chair Report Laura & Kathy
11/29 Advent Wreath Party - 9:30 am - 25 wreaths were made. Three were donated to local nursing homes. Service was very well received with compliments from older congregational members as well as families of Sunday schoolers.

12/20 - Poinsettia Party - Clark, Betsy, Tracey and Michelle to lead. Sunday School children will make cards to go along with the Poinsettias. Kathy Lifton will put a blurb in the Broadcaster and Bulletin. Betsy to connect with Pastoral Care Board to ensure they will take additional cards to nursing homes. Betsy will connect with Larry Kemp to send out an email blast. Kathy to bring books and Jim will bring crosswords for after the card making activity is over. Additional Volunteers are needed:

1-2 to assist with set up
3-4 to assist with card-making in the gym
2 volunteers for assisting in the Kitchen - Laura and Shane 1-
2 to assist with clean up

Reminder to continue checking in with your classrooms and support

Classroom Connections 4

Year Olds - Sarah
5 Year Olds - Betsy
1st Grade - Jim
2nd Grade - Tracy
3rd Grade - Laura
4th Grade - Corey/Tracy
5th Grade - Clark
6th Grade - not needed

Meeting adjourned with the Lord's Prayer at 8:20. Next meeting: January 4, 7:00-9:00 pm at GCC

Respectfully submitted by Shane Bill

Glenview Community Church
Finance Board Minutes
December 7, 2009

Members Present: Steve Morgan, John Demler, Marlene Baddeloo, Scott Barnes, Janet Berkenstock, Rob Hevey, Cricket Kelly, Larry Kemp, Laura Olson

Members Excused: Scott Barnes, Jane Hund

Also Present: Marcia Kiraly (GCCNS), Kerri Noard (GCCNS), Barry Nelson

Meeting called to order 7:00 pm. Opening prayer led by Janet Berkenstock.

Summary of Meeting:

November meeting minutes were approved.

Treasurers Report

Rob reviewed preliminary November summary; final report will be sent out Wednesday. Budget is on track for the year. At end of December we expect to realize year-end distributions from investments. Romeiser fund transfer has not yet occurred and will be reviewed at year-end.

Budget

The 2010 Budget was reviewed, including the summary of key changes as compared to 2009. In addition the 2010 Capital Requests were reviewed and discussed. A motion was made and seconded to approve the 2010 Budget and 2010 Capital Requests for presentation to the Executive Board. Motion carried.

Insurance

Steve updated us as to investigation into alternative health insurance plans for ministers. Additional investigation would be required to understand any implementation challenges (i.e. amendments to call letters, etc.) and as we are already past the annual enrollment period no changes will be pursued for 2010.

Investment

Investments continue to improve. Capital gains distributions are expected to be realized in December which we anticipate will bring us in line with the 2009 budget amounts for investments. There are a couple of open reconciliation issues that Cricket is working through with Dale.

Marlene provided an update regarding last month's follow-up action on the UPMIFA law that went into effect on June 30, 2009. The UPMIFA law states that when you have endowment funds whose earnings are unrestricted you can't just spend them - you have to appropriate them. We believe we are already in compliance with this law as we appropriate these funds today through our budget process so we do not need to take any additional action at this time.

Leadership

Beryl Bills and Rob Hevey have accepted nomination for another 1 year term, pending approval of the congregation. Leadership Committee also started the candidate selection process for the next Vice Moderator.

Audit

Marlene is researching plans for the 2010 audit review and will provide an update at a future meeting.

PMRC

No report.

Old Business

None

New Business

GCCNS: Kerri and Marcia shared with us the 2008-2009 financials. GCCNS realized excess revenue this past year which they attribute to KinderQuest program and fundraising. This year (2009-2010) enrollment is down. GCCNS is changing the class offering next year to include longer days for juniors and seniors.

Radio Spectrum Change: Barry updated us on the FCC selling of the radio spectrum changes. At some point in the future (don't know when) someone will take over the radio spectrum and when that happens that will impact the wireless microphones being used at the church. Have received quote from Shure for ~\$5,500 less a rebate of \$2,000 for a total of ~\$3,500 which will bring us in compliance. The rebate is good until Dec 31, 2009. Funding for this change is included in 2010 Budget.

Submitted by Janet Berkenstock

2010 Capital Requests

The current balance in the Capital Reserve is ~\$245,000. Following are the 2010 Capital Requests:

- Exterior Painting \$20,000 - \$30,000
 - Painting and/or fascia and soffit replacement. May make sense to replace difficult to access areas with maintenance saving surfaces like Hardie Board, etc. Going forward we are considering setting up a multi-year phased painting/maintenance schedule to better manage expenses.

- Parking Lot \$15,000 - \$25,000
 - Engineering study to determine how we can best control surface and ground water in order to mitigate basement flooding issues. Results of study will be used to develop implementation plan beginning in 2011. Capital campaign may be required in 2010 to support implementation in 2011.

- Phone System \$15,000 - \$20,000
 - Need new phone system – difficult to find anyone to repair current system and parts are increasing hard to come by.

2010 Budget Summary

2010 Budget being proposed is a balanced budget. Summary of key changes *as compared to 2009* include:

- Incorporation of PTF (Personnel Task Force) Group A Recommendations as approved at the August 29 Executive Board meeting.
- Updates to pledge and non-pledge contributions based upon results of the 2010 Stewardship campaign.
- Restoration of normal annual revenue contributions for Women's Association and Nursery School, and inclusion of Music expenses. All of these groups contributed extra funds in 2009 to help close the 2009 budget gap – thank you!
- Reduction in Membership expenses due to elimination of Director of Membership position.
- Music increase of ~\$2,000 for piano and organ maintenance.
- Properties increase of ~\$2,000 for maintenance contacts and ~\$5,000 for required maintenance including gas main replacement and audio system changes required due to FCC airwave auction.
- Stewardship Resource Development Group special events revenue and associated expenses to plan/communicate these events will be included in January. As revenue will exceed expenses the resulting budget outcome is expected to be a positive budgetary impact.

Glenview Community Church
Proposed 2010 Budget
as of 12/07/2009

| | | 2008 | 2008 | 2009 | 2010 |
|-----------------|---|---------------------|---------------------|---------------------|---------------------|
| | | <u>Budget</u> | Actual | <u>Budget</u> | <u>Budget</u> |
| Revenues | | | | | |
| 105 | Current Pledge Contributions | 975,000 | 916,096 | 898,661 | 887,970 |
| 107 | Non-Pledge Contributions | 106,636 | 68,638 | 60,000 | 54,000 |
| 109 | Pledge Overage | 15,000 | 72,560 | 40,000 | 40,000 |
| 110 | Prior Year Pledge | 2,500 | 2,692 | 5,000 | 3,000 |
| 115 | Loose Offering | 10,000 | 9,434 | 9,000 | 8,000 |
| 124 | Church School Offering | 1,000 | 282 | 300 | 300 |
| 130 | Women's Association | 8,000 | 8,000 | 13,000 | 10,000 |
| 135 | Building Fees | 4,500 | 8,012 | 7,000 | 9,960 |
| 142 | Nursery School | 27,695 | 30,451 | 39,766 | 35,200 |
| 145 | Interest Income | 12,100 | 6,797 | 4,000 | 450 |
| 147 | Housing Trust Income | 25,000 | 25,000 | 13,960 | 10,000 |
| 155 | Endowment Income | 6,500 | 5,375 | 0 | 6,800 |
| 157 | Endowment Income II | 13,000 | 13,436 | 10,000 | 10,000 |
| 169 | Mission Offering | 25,000 | 24,488 | 25,000 | 19,000 |
| Total | | <u>\$ 1,231,931</u> | <u>\$ 1,191,261</u> | <u>\$ 1,125,687</u> | <u>\$ 1,094,680</u> |
| Expenses | | | | | |
| | Total Pastoral Expenses | 359,356 | 353,119 | 362,960 | 257,839 |
| | Total Missions | 117,883 | 117,371 | 116,879 | 109,366 |
| | Total Children's Ministry | 36,027 | 34,374 | 35,385 | 35,072 |
| | Total Confinnation & Youth | 34,082 | 33,653 | 33,392 | 33,782 |
| | Total Pastoral Care | 51,653 | 51,752 | 53,371 | 53,451 |
| | Total Membership | 32,939 | 31,048 | 12,582 | 2,600 |
| | Total Adult Education | 2,220 | 1,857 | 1,998 | 1,700 |
| | Total Services & Sacraments | 490 | 494 | 441 | 490 |
| | Total Fellowship | 690 | 759 | 621 | 750 |
| | Total Music | 84,962 | 81,131 | 82,523 | 85,930 |
| | Total Stewardship | 2,445 | 1,207 | 2,201 | 2,200 |
| | Total General & Administrative | 230,109 | 232,007 | 194,680 | 194,142 |
| | Total Church Properties | 258,211 | 286,781 | 270,731 | 277,489 |
| | Total Pageant | 1,490 | 1,567 | 1,341 | 1,500 |
| | Total Capital Reserve Fund | 19,374 | 19,374 | 0 | 26,620 |
| | Total | <u>\$ 1,231,931</u> | <u>\$ 1,246,494</u> | <u>\$ 1,169,105</u> | <u>\$ 1,082,930</u> |
| | Net (Deficit) without Transfers | \$0 | (\$55,233) | (\$43,418) | \$11,750 |
| | Fund Transfers | 0 | 0 | 43,418 | 0 |
| | Net (Deficit) with Transfers | <u>\$0</u> | <u>(\$55,233)</u> | <u>\$0</u> | <u>\$11,750</u> |

GCC Missions Outreach Board December Minutes – 12/8/09, 7:30 meeting

Present: Kristine Voelker, Bill Ryan, Cathy Shapiro, Vicki Weyhrich Splithoff, Mark Lefens, Rev. Nan Conser, Tom Lutz, Diane Carroccia, George Silca, Tracy Sawires

Minister: Reverend Iberg

Guests: Sharon Riley, Pam Riedy

Excused: Donna Peterson, Nancy Mullarkey, Greg Eggleston

Meeting began at 7:35

*MOB heard presentation for Rebuilding Together North Suburban Chicago – Vicki Weyhrich Splithoff and Sharon Riley. How can GCC play a role in the spring build and sponsorship?

*Conversation with Reverend Iberg

*Mission Tree and Blanket Sales for The Night Ministry – 1 Volunteer each 10:30 coffee hour- Dec 13 (Cathy Shapiro) and Dec 20 (Vicki Weyhrich Splithoff). Cold weather items – mittens, scarves,

*Christmas Offering 12/24 – Motion and vote that offering go to: 50% The Night Ministry and 50% Community Renewal Society (Mission Moment 12/20)

*MOB heard presentation on Northside POWER by Pam Riedy. Motion and vote that MOB supports attendance at January 17 gathering at St. Thomas the Apostle. GCC participants will travel via bus.

*Adult Work Trip- Back Bay Mission... Biloxi, Mississippi April 25th-May 1st, 2010. Dates are confirmed. Adult work trip group considering options depending on overall interest.

*Agency discussion and assignments

*Friday, Dec 11 10am phone meeting with April Lewton of Congregational Relations/Development at Chicago Theological Seminary (Mission Moment 1/17/10) regarding GCC trip to CTS in 2010. Let Tracy know if you want to participate in call.

Meeting concluded at 9:10pm. Next Meeting: January 12, 2010 at 7:30pm, GCC Parlor

*Mission Moments (3rd Sunday of each month):

September 2009 ARISE (Labor Day) and Good News Partners (regular 3rd Sunday), October 2009-CROP walk, November 2009 Helaine Raskin, MSW The Josselyn Center, Northfield

-December 20, 2009 – Community Renewal Society, Alex Weisendanger (MOB members please attend between service small group meeting with Alex)

January 17, 2010 – Chicago Theological Seminary, February 21, 2010 – The Night Ministry

Prison Ministry –Advocacy, clothing for transitional homes/job interviews, bus transportation for families, calendar collection, and education for congregation.

Resources: Community Renewal Society, Lutheran Social Services, UCC

Educational session - UCC history, theology, polity and tradition of advocacy/justice-education in collaboration with Adult Ed, Ministers, etc.?

AIDS Ministry – contact BeHIV to consider volunteer options for 2010

Outreach projects:

1st Sunday GCC non-perishable food collection – 1st Sunday ongoing – confirmands now delivering

Good News Community Kitchen – 1st Sunday and 3rd Wednesday of each month, ongoing

Glenbrook CROP Hunger Walk – October 18, 2009 afternoon (Donna Peterson, MOB rep.) – done

Collection of 2010 calendars for women's prison-until December 20

Mission Tree and Blanket sales/sponsorship – Dec 13 and 20 MOB and WA chapter 20

Greater Chicago Food Depository – January 9, 2010 1:30-4:30pm (Tracy Sawires, MOB rep.)

6,7,8 and PYF two assembly projects (Sept, Oct, Nov) – done

December 9, 2009

Music Board

Wednesday, December 9, 2009 in room 201.

ATTENDANCE: Ray Scott, Sue Newberry, Mickey Safstrom, Peggy Roberts, Bill Cooper, Dick Conser, Gary Wendt. Excused: Ed Detwiler, Andy Lewis.

The meeting was called to order at 7:05 p.m. by chairperson, Ray Scott, and a brief prayer was offered.

The minutes of the Nov. 11, 2009 meeting were approved as read.

The Executive Board report was reviewed by The Board.

Staff Reports

Andy Lewis- absent

Debby Shellard- Debby expressed appreciation to everyone who stepped in to provide help during her hospitalization, especially the choir moms. The children's choirs were able to bring their music to the annual Christmas Pageant on December 6. They will also be participating in the Toy-Ful Celebration on December 19. Due to Debby's upcoming heart surgery on December 17, someone else will fill in for her at the Toy-Ful Celebration event. By Christmas Eve, Debby will be recovered and will lead the children's choirs for the 4:30 p.m. service. There will also be an intergenerational choir performing at the 4:30 service.

Gary Wendt- Gary had nothing new to report, but did refer to the Old Business and New Business items that he would discuss later in the meeting.

Old Business

Finance Report – No report was available as Dale had not been able to close the November accounts.

Payment of musicians for concerts – Gary Wendt brought to The Board his need to have a policy set regarding the payment of musicians who are church members and who render service for a concert. Church musicians who render their talents for a worship service are not paid, nor do they expect to be paid. Playing or singing for an event where musicians are hired is another issue. Should we have a policy of paying church member musicians for events where musicians are hired? Board members are asked to bring their thinking on this issue to the January 13, 2010 Board meeting when we will establish and vote on such a policy.

New Business

Policy Section for Music Board binders – Gary Wendt suggested that all Music Board policies be spelled out in a section of the binders used by each Music Board member. As it is now, past policies

have to be located by checking through old minutes. A much easier reference to access is needed.

Use of Friends of Music funds – Gary Wendt passed out a sample proposal for the use of Friends of Music funds. The proposal would designate where these funds have been used in the past and the percentages that have gone to instrumentalists, special music projects, Simple Gifts Series, kept for emergencies, etc. The concept and implementation of this proposal were discussed by those in attendance. This discussion and a decision on this proposal will be taken up at the January or February meeting.

Pasta Luigi – is not yet on the calendar for next year. A date will be chosen and a decision made about holding the event next year after the Chancel Choir is polled at their rehearsal on December 10th to determine if leadership for the event can be found and if there is a desire to continue this event. There is also some question as to whether the funds raised can go to charity (as has been done in the past) or whether we will be required to pass them into the church budget.

Request from Confirmation Teachers - The Confirmation Teachers have invited the Boards of GCC to attend and participate in “Opening Prayers” which is held each Sunday in the Plymouth Room from 9:30 – 9:40. The request includes an invitation to speak briefly about their Board and give a short devotional. Dates available are:

December 13, 20

January 10, 17, 31.

February 7, 14, 21, 28.

Coffee Hour hosting - Sue Newberry, Bill Cooper, and Peggy Roberts volunteered to host on January 24, 2010. Since that is the Sunday of the annual Interfaith Service, Mickey will check with Tom Amos to confirm that help is needed on that Sunday.

The meeting was adjourned at 8:10 p.m. with the Lord's Prayer.

NEXT MEETING: January 13, 2010 at 7 p.m. in room 201.

MINUTES SUBMITTED: Friday, December 11, 2009 by Mickey Safstrom

Glenview Community Church Board Minutes
Services and Sacraments

Meeting Date/Time/Place: Tuesday, November 10, 2009 at 7:00 p.m., Glenview Community Church Chapel

Members Present: Mike Davis, Steve, Pam Asplund, Dori Hirsh, Carolyn Brown Carlton Olson, Cathy Ach, Carol Young

Members Excused: Kathy Tomita, Bob Richter, Julie Tillman, Jeff Lundal

Members Absent: Colleen MacKimm, Janice Lane,

Ad Hoc Members Present: Steve Lindell

Opening Prayer

Minutes for the October 13, 2009 meeting were review and approved

Executive Board Report Pam provided an update on the October Operating Committee meeting. One key issue is coordination of board meetings, where boards are meeting, and room reservations.

Boards will be working together with Colleen MacKimm to plan Rally Day.

We are encouraged to follow the GCC ground rules in all of our board meetings

Tom Amos asked permission to begin the quilt auction on behalf of Heifer.

Dori Hirsch shared some points from Pam's service on Sunday and specifically mentioned the moment in which people were called to the altar and place their hands on the altar as a step toward healing within the Church. Dori and Steve Lindell both spoke about the power of that moment.

Lector Report: no update

Usher report: Steve Langenbach was recruited for Team 1. A new member was also recently recruited as an usher.

Next Communion Service: 11/29, not by intinction but will served by pews due to flu concerns. We have 5 out of 6 people for the 9:30 service.

New Business: 11/22 coffee hour will be represented at 8:30 by Steve Lindell and Carolyn Brown, at 10:30 Carlton Olson and Carolyn Brown

Pam Keckler stopped by and asked if any board members wanted to volunteer as ushers for memorial services. Please let Jane Payne know. Suggested that we put an invitation in the Broadcaster as well.

Closing Prayer and meeting was adjourned by 8:05 pm **Next Meeting 12-8-09 7 pm**

Respectfully submitted,
Carolyn Brown

GLENVIEW COMMUNITY CHURCH BOARD MINUTES

Women's Association

November 17, 2009

MEMBERS PRESENT: 16
MEMBERS EXCUSED: 4
MEMBERS ABSENT: 1

SUMMARY OF MEETING:

Board member Anne Deakayne opened the meeting by reading a litany about Thanksgiving that she received from Reverend Iberg.

President Tracy Sawires reported on various activities around the church that continue to provide pastoral care, spiritual development and overall support and outreach. Activities include the special coffee hour that will be held after both services on November 22nd, to allow the congregation an opportunity to thank Reverend Iberg and wish her and her family well. As December will mark the departure of Reverend Iberg and the beginning of Dr. Keckler's sabbatical, Tracy urged members of the Women's Association to find ways to support the staff during this time of transition.

Treasurer Joan Striebel reported that we are in a good financial position to continue our outreach ministry.

Tracy introduced Board members to Jennifer Helgren, our new facilities manager, and thanked her for all that she does around the church. Her attention to detail is appreciated and her staff is doing an excellent job. Colleen Mackimm agreed, commenting that this was the easiest and best Rally Day ever, as things were so well organized.

The Social Service Committee met recently and approved the following \$31,000 in grants for the 2009-10 fiscal year:

| | |
|---|---------|
| By the Hand Club for Kids | \$3,500 |
| GCC Minister's Discretionary Fund | \$ 500 |
| GCC Mission Tree | \$ 500 |
| Glenview/Northbrook Youth Services | \$3,500 |
| Good News Community Kitchen | \$2,000 |
| Helping Hands | \$ 500 |
| Journey from PADS to Hope | \$2,500 |
| Special Gifts Theatre | \$ 250 |
| LEAP | \$1,000 |
| Night Ministry | \$5,000 |
| Northfield Food Pantry | \$ 500 |
| Northside Housing and Supportive Services | \$3,250 |
| Onward House | \$4,000 |
| San Lucas Iglesia UCC | \$3,500 |
| Self Help Closet and Pantry | \$ 500 |

Additionally, Board members voted unanimously to give Bethel AME Church \$200 again this Christmas to buy phone cards for women in their Prison Project this Christmas, and to donate \$175 to the confirmand/PYF project of putting together "New Mom" kits for the Night Ministry.

Board members also voted unanimously to give a scholarship of \$1,500 to Elizabeth Ciccolini for her second semester at Chicago Theological Seminary.

The Resale Shop's volunteers are adequate in number and very responsive, but the Resale Shop Committee still needs members. It could also use people to distribute the Bargain Hunter magazine to places around town. Barbara Tevis was interviewed in an October edition of the Trib Local, which may have contributed to the very good sales the shop has been having. The shop still has reusable bags for sale.

At least four new members have joined existing chapters this year. There is still interest in starting a new chapter for women with babies and toddler-aged children, but so far, there are not enough members.

The FEDS Committee plans no further projects until later in the year.

Chapters have started preparing food for Meals on Wheels, and everything is operating efficiently.

The Friendship Chairman recently sent a letter of condolence and a "Thinking of You" card concerning GCCWA members.

24 people are participating in this year's Bridge Marathon, which is running smoothly. Participants come from several suburbs and have discussed playing all the games together at the church each month, rather than each foursome trying to schedule them at their homes.

Participants in the Prayer Shawl Ministry met November 4th, when Dr. Keckler and Marilyn Belleau shared stories about delivering the shawls, and what they have meant to the recipients. Members also learned a new project for left over yarn. Further meetings will be held to allow participants to share fellowship and knit together. Check the Broadcaster--anyone who knits or crochets, or wants to, is welcome.

Village Treasure House Board members recently award \$30,000 in winter grants. The shop is always looking for new consignors/donors, customers and volunteers.

Chapters reported on their recent activities, which included the donation of food and backpacks for children returning to school to the Northfield Food Pantry, preparation of toiletry bags for San Lucas Church, serving at the Good News kitchen, chapter movie nights, trips to "The Nature of Diamonds" exhibit at the Field Museum, the Tyner Interpretive Center and the new Holocaust Museum, guest speakers including Nancy Bloom from Youth Services, Mary Jane Huber and Sandra Frantz on the Good News Kitchen a "Make It, Bake It, Fake It" fundraiser, a bake sale at the Farmer's Market, the fall Drive Through Barbeque. Many chapters will be sponsoring families from Youth Services this Christmas.

Meeting adjourned with the Lord's Prayer.

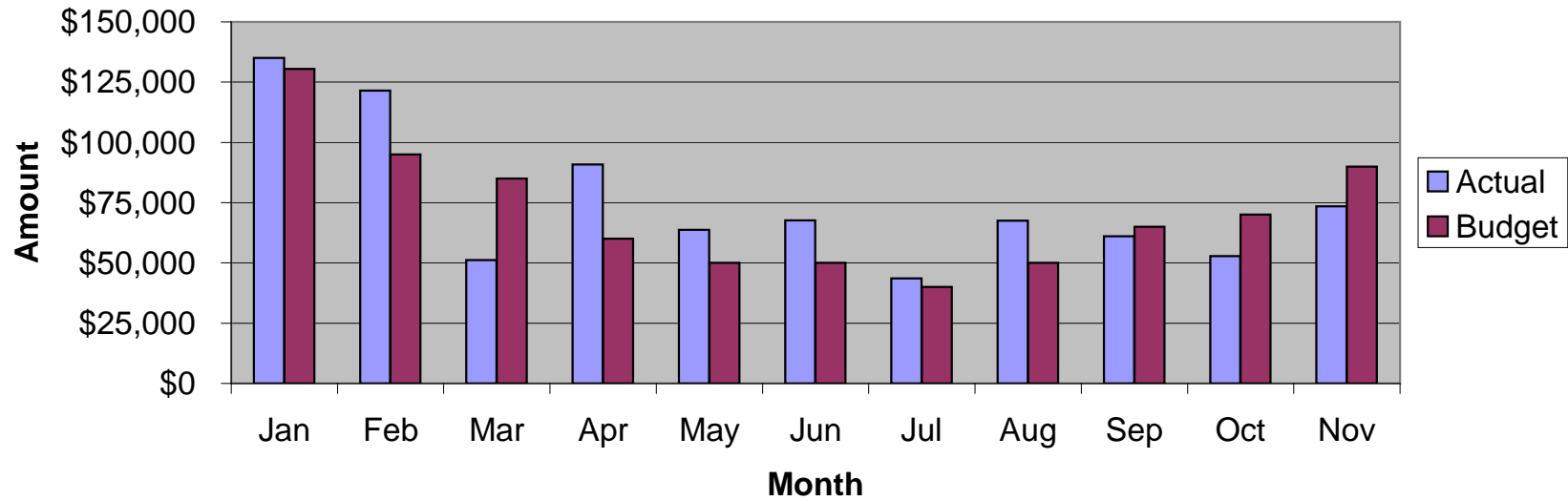
Respectfully submitted on December 9, 2009 by Kathryn Hall

Next meeting: Tuesday, January 19th at 7 p.m. in the Parlor

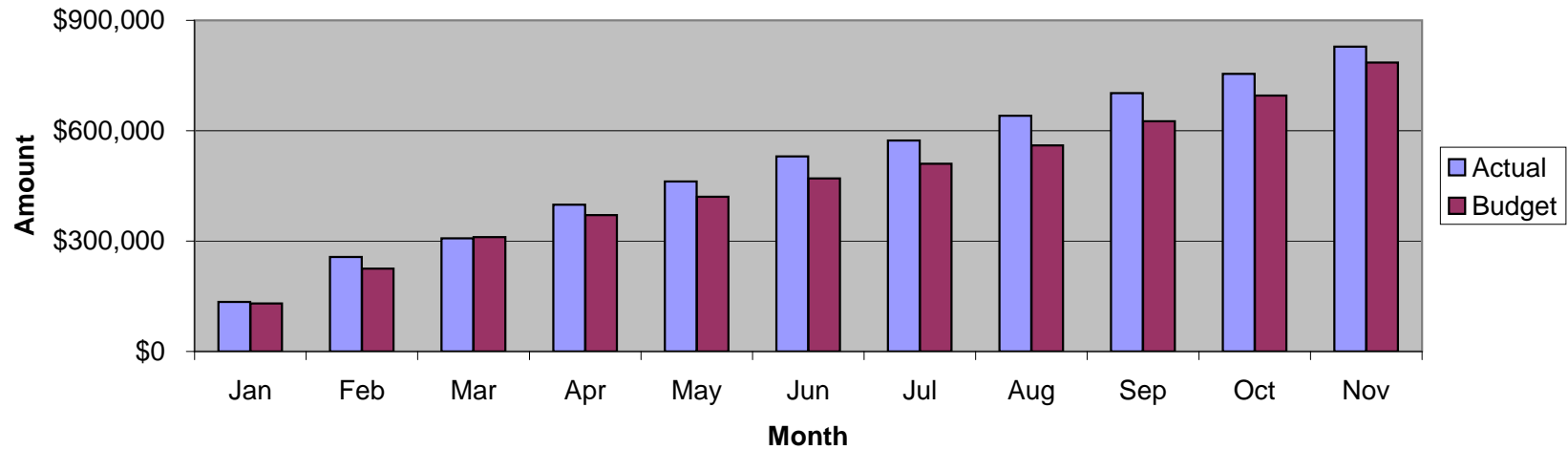
**Glenview Community Church
YTD Revenue Expense Summary**

| | | YTD | YTD | YTD | Notes |
|--------------------------|----------------|------------------|------------------|----------------|---|
| | Nov-09 | Actual | Budget | Over/(Under) | General Note: Most revenue accounts and certain expenses have been seasonally adjusted. |
| | | | | Budget | |
| Revenues | | | | | |
| Contributions | 106,827 | 972,248 | 857,209 | 115,039 | Current Year, Overage, and Prior Year Pledges |
| Loose Offerings | 722 | 8,054 | 7,025 | 1,029 | |
| Women's Assoc | - | 13,100 | 13,000 | 100 | |
| Fees & Nursery School | 5,833 | 41,755 | 40,895 | 860 | |
| Interest | 21 | 461 | 3,600 | (3,139) | |
| Housing Trust | - | 4,037 | 10,200 | (6,163) | |
| Endowment I | - | 2,863 | - | 2,863 | |
| Endowment II | 523 | 9,973 | 8,600 | 1,373 | |
| Mission Offering | 2,227 | 13,871 | 15,750 | (1,880) | |
| Special Events Income | - | 2,811 | - | 2,811 | |
| Total Revenues | 116,153 | 1,069,173 | 956,279 | 112,894 | |
| Expenses | | | | | |
| Pastoral | 24,110 | 342,192 | 329,110 | 13,082 | Expense prepaid insurance and annuities |
| Missions | 9,859 | 98,173 | 99,900 | (1,728) | |
| Children's Ministry | 2,630 | 29,807 | 32,095 | (2,288) | |
| Confirmation & Youth | 2,758 | 30,546 | 30,015 | 531 | |
| Pastoral Care | 4,428 | 48,865 | 48,865 | 0 | |
| Membership | 259 | 10,650 | 12,303 | (1,653) | |
| Adult Education | - | 1,000 | 1,881 | (881) | |
| Services & Sacraments | - | 373 | 405 | (32) | |
| Fellowship | 65 | 179 | 540 | (361) | |
| Music | 6,410 | 64,253 | 65,870 | (1,617) | |
| Stewardship | 85 | 2,193 | 1,935 | 258 | |
| General & Administrative | 13,663 | 177,660 | 175,920 | 1,740 | |
| Church Property | 19,928 | 246,988 | 244,875 | 2,113 | Salaries, Maintenance & Repairs offset by lower Utilities |
| Pageant | 283 | 283 | - | 283 | |
| Capital Reserve | - | 26,000 | - | 26,000 | Repayment of "Loan" from 2008 year-end |
| Total Expenses | 84,477 | 1,079,162 | 1,043,714 | 35,448 | |
| Net | 31,675 | (9,989) | (87,435) | 77,446 | |
| General Fund | (9,359) | | | | General Fund Negative - Budgeted Romeiser transfer yet unmade. |
| Capital Reserve | 245,439 | | | | |

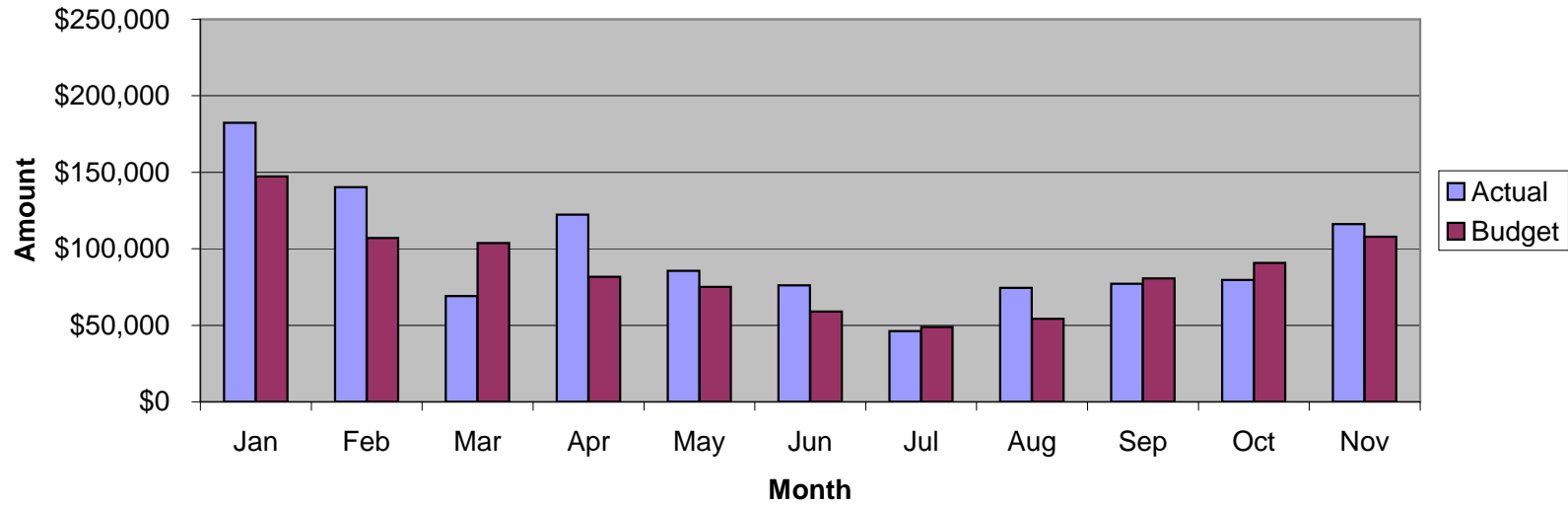
Monthly Pledges - Actual vs. Budget



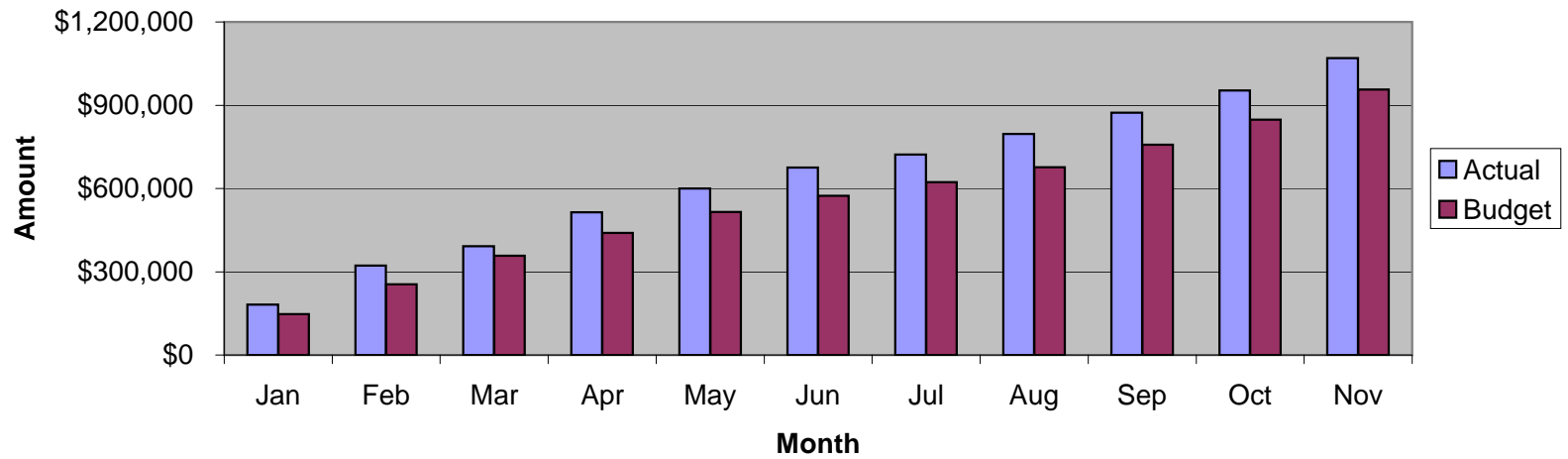
YTD Pledges - Actual vs. Budget



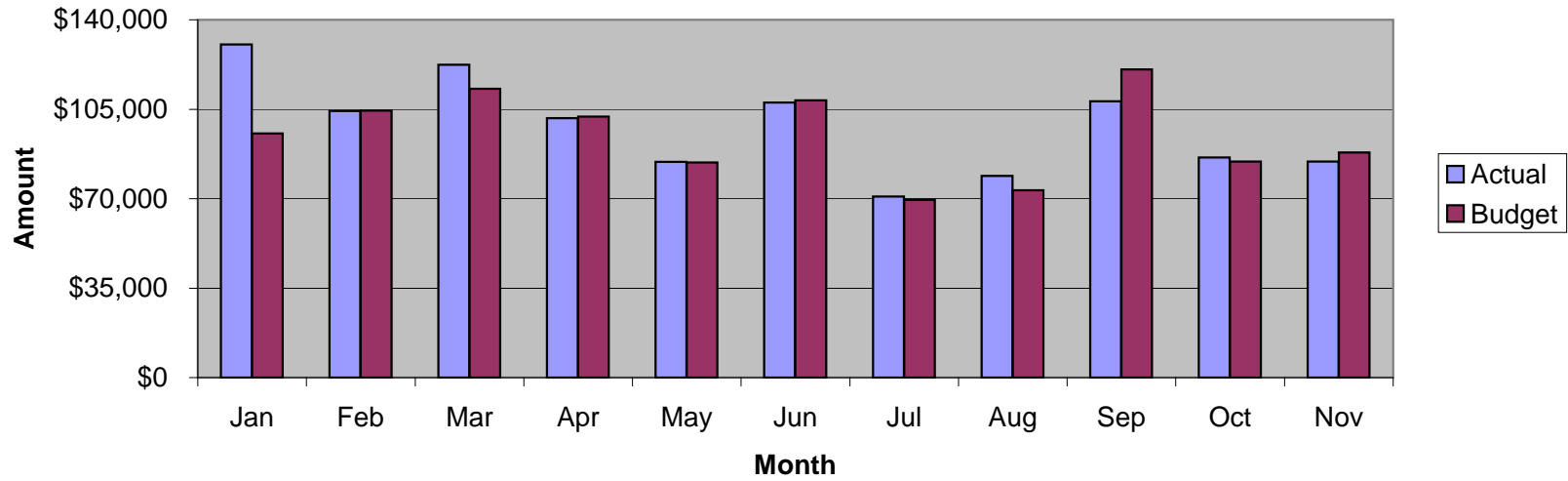
Monthly Revenue - Actual vs. Budget



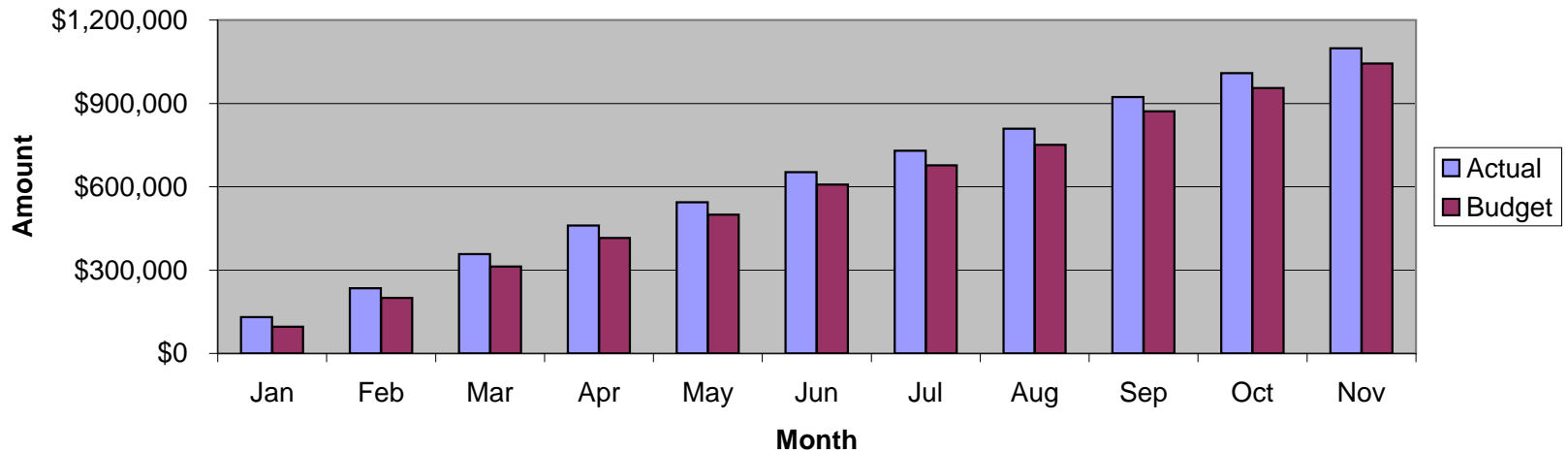
YTD Revenue - Actual vs. Budget



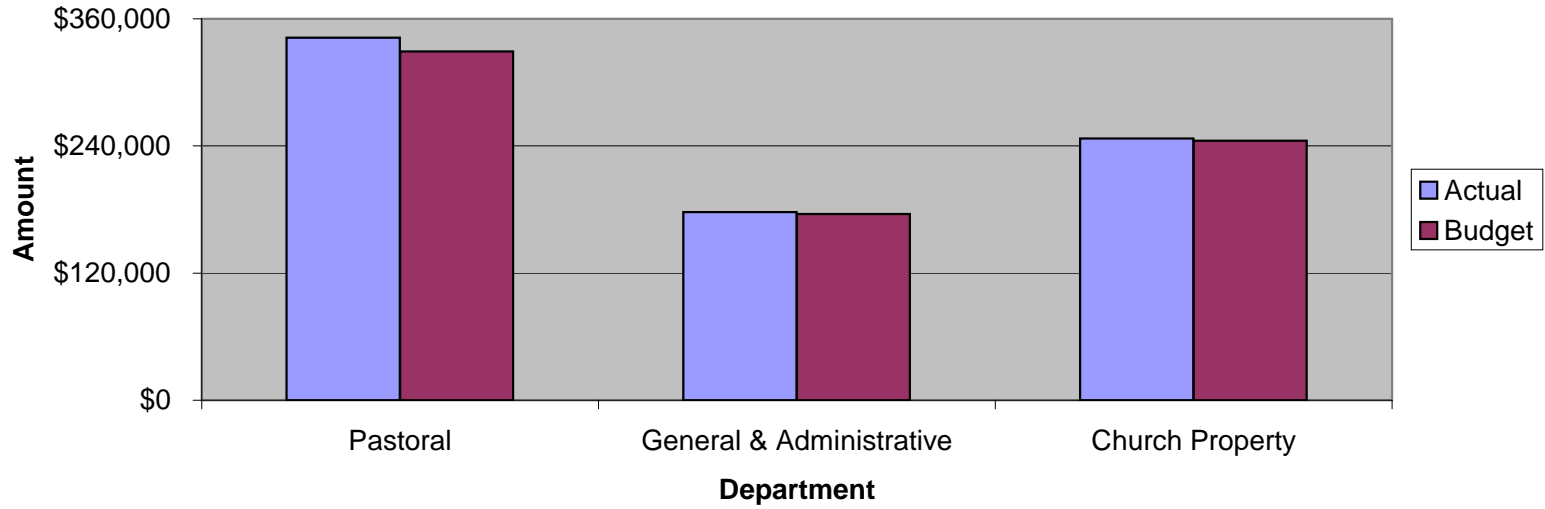
Monthly Expenses - Actual vs. Budget



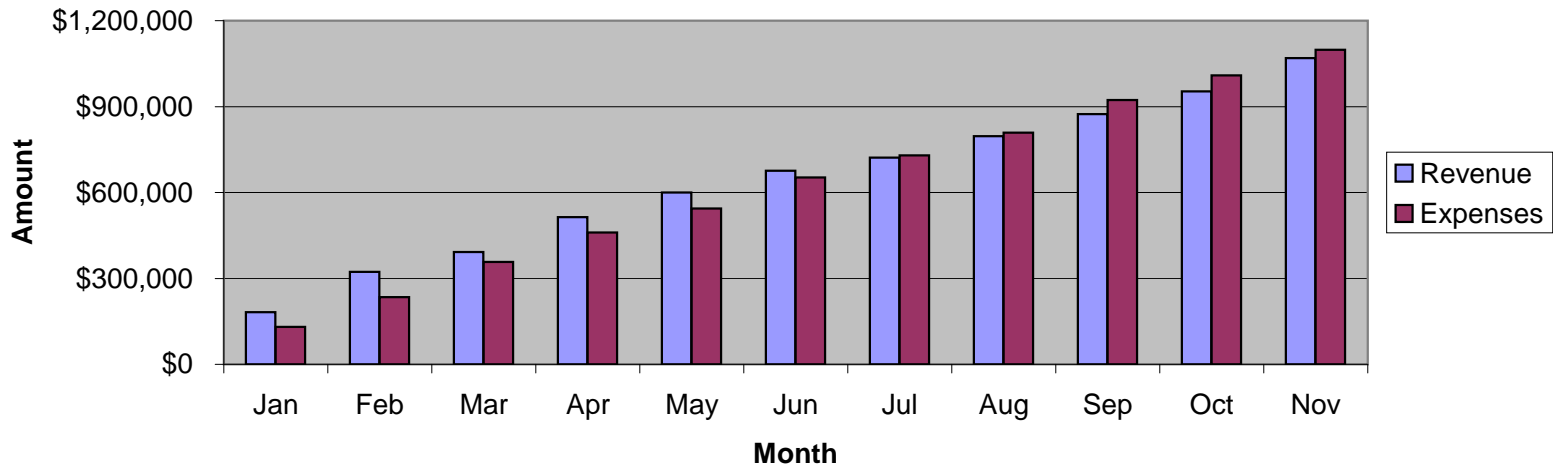
YTD Expenses - Actual vs. Budget



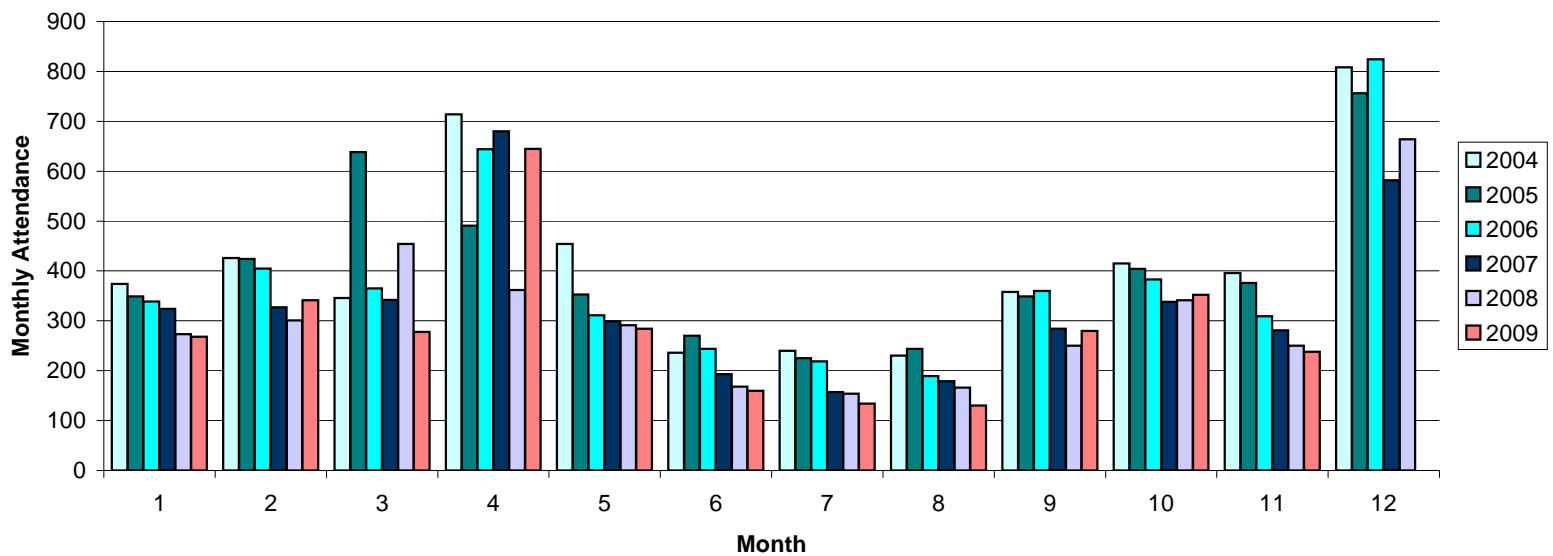
YTD Operations - Actual vs. Budget



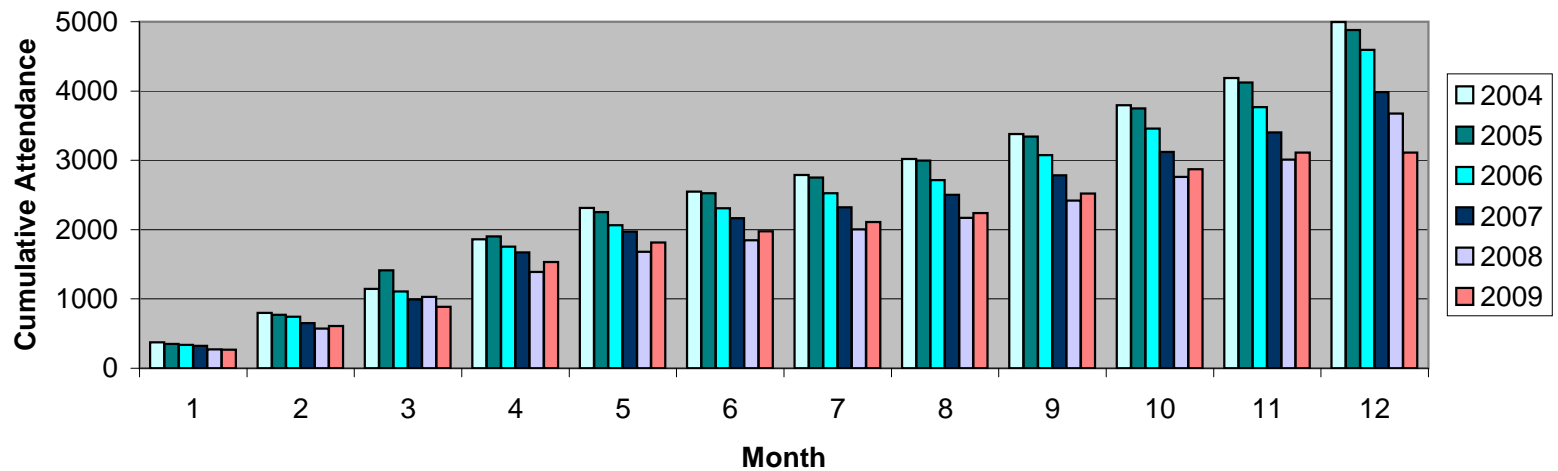
YTD Actual - Revenue & Expenses



Sunday Average Attendance - Monthly



Sunday Average Attendance - Cumulative



Glenview Community Church
 Analysis of Revenues & Expenses - Summary Portrait 2009
 November 2009

| Accounts | MTDActual (This Year) | MTD Budget (This Year) | YTDActual (This Year) | YTD Budget (This Year) | YTD Actual (Last Year) | Annual Budget (This Year) |
|-------------------------------|--------------------------|---------------------------|--------------------------|---------------------------|---------------------------|---------------------------------|
| Revenues | | | | | | |
| Total Revenues | \$116,152.80 | \$107,940.00 | \$1,069,172.64 | \$956,279.00 | \$980,472.27 | \$1,125,687.00 |
| Expenses | | | | | | |
| Pastoral Expenses | \$24,109.60 | \$23,370.00 | \$342,192.30 | \$329,110.00 | \$324,059.17 | \$362,960.00 |
| Missions | \$9,859.00 | \$10,900.00 | \$98,172.50 | \$99,900.00 | \$101,683.18 | \$116,879.00 |
| Children's Ministry | \$2,630.45 | \$3,200.00 | \$29,807.18 | \$32,095.00 | \$31,110.41 | \$35,385.00 |
| Confirmation & Youth Ministry | \$2,758.23 | \$3,335.00 | \$30,546.35 | \$30,015.00 | \$31,107.85 | \$33,392.00 |
| Pastoral Care | \$4,427.72 | \$4,455.00 | \$48,865.15 | \$48,865.00 | \$47,408.37 | \$53,371.00 |
| Membership | \$258.54 | \$275.00 | \$10,649.65 | \$12,303.00 | \$28,466.53 | \$12,582.00 |
| Adult Education | \$0.00 | \$209.00 | \$1,000.00 | \$1,881.00 | \$1,513.25 | \$1,998.00 |
| Services & Sacraments | \$0.00 | \$45.00 | \$373.30 | \$405.00 | \$310.73 | \$441.00 |
| Fellowship | \$64.82 | \$60.00 | \$179.49 | \$540.00 | \$622.01 | \$621.00 |
| Music | \$6,409.95 | \$7,495.00 | \$64,252.64 | \$65,870.00 | \$73,962.61 | \$69,455.00 |
| General & Administrative | \$13,663.46 | \$12,310.00 | \$177,659.78 | \$175,920.00 | \$210,936.29 | \$194,680.00 |
| Stewardship | \$85.26 | \$215.00 | \$2,192.85 | \$1,935.00 | \$1,239.63 | \$2,201.00 |
| Church Property | \$19,927.85 | \$22,225.00 | \$246,988.32 | \$244,875.00 | \$251,062.82 | \$270,731.00 |
| Pageant | \$282.54 | \$0.00 | \$282.54 | \$0.00 | \$0.00 | \$1,341.00 |
| Capital Reserve | \$0.00 | \$0.00 | \$26,000.00 | \$0.00 | \$17,759.50 | \$0.00 |
| Long Range Plan Funds | \$0.00 | \$0.00 | \$0.00 | \$0.00 | \$0.00 | \$0.00 |
| Total Expenses | \$84,477.42 | \$88,094.00 | \$1,079,162.05 | \$1,043,714.00 | \$1,121,242.35 | \$1,156,037.00 |
| Net Total | \$31,675.38 | \$19,846.00 | (\$9,989.41) | (\$87,435.00) | (\$140,770.08) | (\$30,350.00) |

Glenview Community Church
 Analysis of Revenues & Expenses - Detail Portrait 2009
 November 2009

| Accounts | MTD Actual (This Year) | MTD Budget (This Year) | YTD Actual (This Year) | YTD Budget (This Year) | YTD Actual (Last Year) | Annual Budget (This Year) |
|--|---------------------------|---------------------------|---------------------------|---------------------------|---------------------------|---------------------------------|
| Revenues | | | | | | |
| 9105 - Current Pledge Contributions | \$73,516.14 | \$90,000.00 | \$828,396.34 | \$785,509.00 | \$784,723.01 | \$898,661.00 |
| 9107 - Non-Pledge Contributions | \$7,759.00 | \$3,800.00 | \$55,747.62 | \$51,300.00 | \$58,687.85 | \$60,000.00 |
| 9109 - Pledge Overage Contributions | \$25,551.54 | \$3,000.00 | \$52,028.17 | \$15,400.00 | \$28,100.77 | \$40,000.00 |
| 9110 - Prior Year Pledge | \$0.00 | \$0.00 | \$36,076.03 | \$5,000.00 | \$2,692.00 | \$5,000.00 |
| 9115 - Loose Offering | \$456.30 | \$800.00 | \$7,522.07 | \$6,800.00 | \$7,181.04 | \$9,000.00 |
| 9124 - Church School Offering | \$266.00 | \$25.00 | \$532.10 | \$225.00 | \$280.60 | \$300.00 |
| 9130 - Women's Association | \$0.00 | \$0.00 | \$13,100.00 | \$13,000.00 | \$8,000.00 | \$13,000.00 |
| 9135 - Building Fees | \$2,090.00 | \$800.00 | \$9,175.00 | \$6,400.00 | \$7,237.00 | \$7,000.00 |
| 9142 - Nursery School | \$3,743.11 | \$5,265.00 | \$32,579.88 | \$34,495.00 | \$26,707.58 | \$39,766.00 |
| 9145 - Interest Income | \$20.88 | \$400.00 | \$460.65 | \$3,600.00 | \$6,451.19 | \$4,000.00 |
| 9147 - Housing Trust Income | \$0.00 | \$0.00 | \$4,036.90 | \$10,200.00 | \$18,750.00 | \$13,960.00 |
| 9155 - Endowment Income | \$0.00 | \$0.00 | \$2,863.04 | \$0.00 | \$3,750.00 | \$0.00 |
| 9157 - Endowment Income II | \$522.83 | \$600.00 | \$9,973.34 | \$8,600.00 | \$11,615.80 | \$10,000.00 |
| 9170 - Neighbors In Need | \$0.00 | \$0.00 | \$0.00 | \$1,900.00 | \$1,705.00 | \$1,900.00 |
| 9175 - Thanksgiving | \$2,227.00 | \$3,250.00 | \$2,227.00 | \$3,250.00 | \$2,980.00 | \$3,250.00 |
| 9180 - Christmas | \$0.00 | \$0.00 | \$0.00 | \$0.00 | \$0.00 | \$9,250.00 |
| 9185 - Easter | \$0.00 | \$0.00 | \$9,765.50 | \$8,750.00 | \$8,466.18 | \$8,750.00 |
| 9190 - One Great Hour of Sharing | \$0.00 | \$0.00 | \$1,878.00 | \$1,850.00 | \$3,144.25 | \$1,850.00 |
| 9199 - Special Events Income | \$0.00 | \$0.00 | \$2,811.00 | \$0.00 | \$0.00 | \$0.00 |
| Total Revenues | \$116,152.80 | \$107,940.00 | \$1,069,172.64 | \$956,279.00 | \$980,472.27 | \$1,125,687.00 |
| Expenses | | | | | | |
| Pastoral Expenses | | | | | | |
| 9302 - Salaries | \$10,575.44 | \$10,575.00 | \$116,347.72 | \$116,325.00 | \$116,337.40 | \$126,913.00 |
| 9304 - Auto Expense | \$315.49 | \$270.00 | \$4,523.86 | \$2,970.00 | \$3,587.79 | \$3,240.00 |
| 9306 - Expense Reimbursement | \$189.33 | \$75.00 | \$567.66 | \$825.00 | \$907.31 | \$927.00 |
| 9308 - Annuities | \$0.00 | \$0.00 | \$34,993.75 | \$32,340.00 | \$32,342.89 | \$35,283.00 |
| 9310 - Conferences / Continuing Educa | \$846.03 | \$300.00 | \$4,059.31 | \$5,800.00 | \$3,428.66 | \$6,100.00 |
| 9312 - Senior Minister Allowance | \$0.00 | \$100.00 | \$211.33 | \$600.00 | \$499.38 | \$675.00 |
| 9314 - Housing Allowance | \$10,426.43 | \$10,425.00 | \$114,690.73 | \$114,675.00 | \$114,690.83 | \$125,117.00 |
| 9316 - Assoc. Minister Allowance | \$237.21 | \$100.00 | \$1,477.25 | \$800.00 | \$758.62 | \$900.00 |
| 9382 - Insurance--Health | \$0.00 | \$0.00 | \$48,604.32 | \$38,000.00 | \$34,702.98 | \$45,482.00 |
| 9384 - Social Security Add On | \$1,519.67 | \$1,525.00 | \$16,716.37 | \$16,775.00 | \$16,803.31 | \$18,323.00 |
| Total Pastoral Expenses | \$24,109.60 | \$23,370.00 | \$342,192.30 | \$329,110.00 | \$324,059.17 | \$362,960.00 |
| Missions | | | | | | |
| 9450 - Mission Offering | \$2,202.00 | \$3,250.00 | \$13,845.50 | \$15,750.00 | \$16,540.43 | \$25,000.00 |
| 9454 - Missions | \$7,657.00 | \$7,650.00 | \$84,327.00 | \$84,150.00 | \$85,142.75 | \$91,879.00 |
| Total Missions | \$9,859.00 | \$10,900.00 | \$98,172.50 | \$99,900.00 | \$101,683.18 | \$116,879.00 |
| Children's Ministry | | | | | | |
| 9464 - Salaries-CM | \$2,407.64 | \$2,485.00 | \$25,095.44 | \$25,010.00 | \$24,888.87 | \$27,503.00 |
| 9466 - SS-CM | \$184.18 | \$190.00 | \$1,919.76 | \$1,910.00 | \$1,911.16 | \$2,104.00 |
| 9468 - Spiritual Formation | \$0.00 | \$145.00 | \$729.76 | \$1,305.00 | \$1,500.36 | \$1,458.00 |
| 9472 - Teacher Training & Appreciation | \$0.00 | \$0.00 | \$168.59 | \$450.00 | \$371.45 | \$450.00 |
| 9476 - Cradle/Toddler Supplies | \$18.54 | \$60.00 | \$458.41 | \$540.00 | \$61.96 | \$630.00 |
| 9488 - Fellowship | \$20.09 | \$90.00 | \$332.29 | \$810.00 | \$514.75 | \$900.00 |
| 9490 - Education & Spiritual Formation | \$0.00 | \$160.00 | \$616.12 | \$1,440.00 | \$1,347.58 | \$1,620.00 |
| 9494 - Mission & Outreach | \$0.00 | \$20.00 | \$86.81 | \$180.00 | (\$10.72) | \$180.00 |
| 9496 - Childcare | \$0.00 | \$50.00 | \$400.00 | \$450.00 | \$525.00 | \$540.00 |
| Total Children's Ministry | \$2,630.45 | \$3,200.00 | \$29,807.18 | \$32,095.00 | \$31,110.41 | \$35,385.00 |
| Confirmation & Youth Ministry | | | | | | |
| 9526 - Salaries-CY | \$2,525.00 | \$2,525.00 | \$22,725.00 | \$22,725.00 | \$22,725.00 | \$25,250.00 |
| 9528 - SS-CY | \$193.16 | \$190.00 | \$1,738.44 | \$1,710.00 | \$1,738.45 | \$1,932.00 |
| 9530 - Jr High - Confirmation | \$19.98 | \$165.00 | \$1,638.12 | \$1,485.00 | \$1,949.19 | \$1,665.00 |
| 9532 - Jr High - Social | \$20.09 | \$35.00 | \$321.73 | \$315.00 | \$202.86 | \$360.00 |
| 9536 - Sr High - Education | (\$85.56) | \$185.00 | \$1,845.00 | \$1,665.00 | \$1,975.94 | \$1,845.00 |
| 9538 - Sr High - Social | \$85.56 | \$235.00 | \$2,278.06 | \$2,115.00 | \$2,516.41 | \$2,340.00 |
| Total Confirmation & Youth Ministry | \$2,758.23 | \$3,335.00 | \$30,546.35 | \$30,015.00 | \$31,107.85 | \$33,392.00 |
| Pastoral Care | | | | | | |
| 9550 - Salaries-PN | \$4,387.62 | \$4,385.00 | \$48,115.00 | \$48,115.00 | \$46,666.84 | \$52,651.00 |
| 9552 - Pastoral Care Board | \$40.10 | \$70.00 | \$601.33 | \$630.00 | \$741.53 | \$720.00 |
| Total Pastoral Care | \$4,427.72 | \$4,455.00 | \$48,855.15 | \$48,865.00 | \$47,408.37 | \$53,371.00 |

Glenview Community Church
 Analysis of Revenues & Expenses - Detail Portrait 2009
 November 2009

| Accounts | MTDActual (This Year) | MTD Budget (This Year) | YTDActual (This Year) | YTD Budget (This Year) | YTDActual (Last Year) | Annual Budget (This Year) |
|---|--------------------------|---------------------------|--------------------------|---------------------------|--------------------------|---------------------------------|
| Membership | | | | | | |
| 9572 - Salaries-Mbr | \$0.00 | \$0.00 | \$9,252.00 | \$9,252.00 | \$25,339.83 | \$9,252.00 |
| 9574 - SS-Mbr | \$0.00 | \$0.00 | \$480.36 | \$576.00 | \$1,401.18 | \$576.00 |
| 9576 - Membership | \$258.54 | \$275.00 | \$917.29 | \$2,475.00 | \$1,725.52 | \$2,754.00 |
| Total Membership | \$258.54 | \$275.00 | \$10,649.65 | \$12,303.00 | \$28,466.53 | \$12,582.00 |
| Adult Education | | | | | | |
| 9602 - Program | \$0.00 | \$189.00 | \$1,000.00 | \$1,701.00 | \$1,500.00 | \$1,800.00 |
| 9614 - Miscellaneous | \$0.00 | \$5.00 | \$0.00 | \$45.00 | \$13.25 | \$63.00 |
| 9616 - Literature & Library | \$0.00 | \$15.00 | \$0.00 | \$135.00 | \$0.00 | \$135.00 |
| Total Adult Education | \$0.00 | \$209.00 | \$1,000.00 | \$1,881.00 | \$1,513.25 | \$1,998.00 |
| Services & Sacraments | | | | | | |
| 9624 - Sacred Services | \$0.00 | \$45.00 | \$373.30 | \$405.00 | \$310.73 | \$441.00 |
| Total Services & Sacraments | \$0.00 | \$45.00 | \$373.30 | \$405.00 | \$310.73 | \$441.00 |
| Fellowship | | | | | | |
| 9636 - Special Functions | \$20.09 | \$45.00 | (\$21.91) | \$405.00 | \$584.27 | \$486.00 |
| 9640 - Miscellaneous | \$44.73 | \$15.00 | \$201.40 | \$135.00 | \$37.74 | \$135.00 |
| Total Fellowship | \$64.82 | \$60.00 | \$179.49 | \$540.00 | \$622.01 | \$621.00 |
| Music | | | | | | |
| 9648 - Salaries-Music | \$5,749.43 | \$5,750.00 | \$59,686.72 | \$58,770.00 | \$58,770.05 | \$64,519.00 |
| 9650 - SS-Music | \$439.82 | \$440.00 | \$4,565.92 | \$4,490.00 | \$4,495.83 | \$4,936.00 |
| 9652 - General - Instrumentalists | \$300.00 | \$360.00 | \$4,150.00 | \$3,240.00 | \$2,150.00 | \$3,600.00 |
| 9654 - General - Organ & Piano Care | \$3,860.00 | \$350.00 | \$5,999.00 | \$3,150.00 | \$3,000.18 | \$3,510.00 |
| 9656 - General - Cleaning Robes | \$0.00 | \$20.00 | \$0.00 | \$180.00 | \$147.00 | \$180.00 |
| 9660 - General - Sub. Organist | \$0.00 | \$90.00 | \$950.00 | \$810.00 | \$825.00 | \$900.00 |
| 9666 - Chancel Choir - Music | \$224.49 | \$225.00 | \$377.67 | \$2,025.00 | \$2,091.49 | \$2,250.00 |
| 9668 - Chancel Choir - Misc. | \$200.00 | \$45.00 | \$377.30 | \$405.00 | \$178.15 | \$468.00 |
| 9670 - Organ Music | \$0.00 | \$45.00 | \$334.32 | \$405.00 | \$500.00 | \$450.00 |
| 9772 - Bell Choir - Music | \$0.00 | \$45.00 | \$5,643.19 | \$405.00 | \$666.63 | \$450.00 |
| 9780 - Children's Choir - Music | \$0.00 | \$70.00 | \$144.94 | \$630.00 | \$717.27 | \$720.00 |
| 9782 - Children's Choir - Misc. | \$0.00 | \$20.00 | \$175.06 | \$180.00 | \$198.01 | \$180.00 |
| 9784 - Copyright Expenses | \$0.00 | \$35.00 | \$646.90 | \$315.00 | \$223.00 | \$360.00 |
| 9790 - Music Transfer | (\$4,363.79) | \$0.00 | (\$18,798.38) | (\$9,135.00) | \$0.00 | (\$13,068.00) |
| Total Music | \$6,409.95 | \$7,495.00 | \$64,252.64 | \$65,870.00 | \$73,962.61 | \$69,455.00 |
| General & Administrative | | | | | | |
| 9822 - Postage (except B'dcaster) | \$506.85 | \$600.00 | \$7,828.16 | \$6,600.00 | \$6,738.84 | \$7,200.00 |
| 9830 - Social Security | \$572.55 | \$575.00 | \$7,093.88 | \$6,945.00 | \$8,602.84 | \$7,370.00 |
| 9832 - Office Staff Salaries | \$7,484.34 | \$7,480.00 | \$93,022.48 | \$91,780.00 | \$115,686.76 | \$99,261.00 |
| 9834 - Payroll Service | \$407.31 | \$225.00 | \$4,071.60 | \$2,875.00 | \$2,889.93 | \$3,135.00 |
| 9836 - Telephone | \$620.63 | \$540.00 | \$6,984.51 | \$5,940.00 | \$6,006.71 | \$6,500.00 |
| 9838 - Stationery & Supplies | \$452.47 | \$960.00 | \$10,906.69 | \$10,560.00 | \$11,811.40 | \$11,500.00 |
| 9840 - Equip. Maintenance/ Repair | \$2,090.22 | \$1,065.00 | \$16,460.82 | \$11,715.00 | \$14,371.20 | \$12,800.00 |
| 9842 - Broadcaster | \$1,000.00 | \$335.00 | \$3,710.63 | \$3,685.00 | \$3,689.40 | \$4,000.00 |
| 9846 - Communications/Promotions | \$0.00 | \$85.00 | \$1,183.44 | \$935.00 | \$3,264.90 | \$1,000.00 |
| 9848 - Kitchen | \$275.05 | \$125.00 | \$1,621.61 | \$1,375.00 | \$1,248.94 | \$1,500.00 |
| 9850 - Insurance-Prop/Casualty/Work | \$149.00 | \$0.00 | \$23,627.95 | \$30,000.00 | \$31,031.96 | \$36,554.00 |
| 9852 - Miscellaneous | \$66.24 | \$10.00 | \$141.24 | \$100.00 | \$3,104.96 | \$100.00 |
| 9854 - Office Equipment Purchase | \$0.00 | \$190.00 | (\$129.99) | \$2,090.00 | \$2,067.16 | \$2,260.00 |
| 9855 - Executive Board Expenses | \$0.00 | \$80.00 | \$648.96 | \$880.00 | \$0.00 | \$1,000.00 |
| 9856 - Bank Fees | \$38.80 | \$40.00 | \$487.80 | \$440.00 | \$421.29 | \$500.00 |
| Total General & Administrative | \$13,663.46 | \$12,310.00 | \$177,659.78 | \$175,920.00 | \$210,936.29 | \$194,680.00 |
| Stewardship | | | | | | |
| 9802 - Offering Envelopes | \$0.00 | \$40.00 | \$998.59 | \$360.00 | \$290.57 | \$405.00 |
| 9803 - Stationery | \$85.26 | \$55.00 | \$739.52 | \$495.00 | \$571.99 | \$563.00 |
| 9804 - Postage | \$0.00 | \$85.00 | \$319.20 | \$765.00 | \$173.88 | \$855.00 |
| 9806 - Celebration | \$0.00 | \$0.00 | \$0.00 | \$0.00 | \$0.00 | \$18.00 |
| 9810 - Miscellaneous | \$0.00 | \$35.00 | \$135.54 | \$315.00 | \$203.19 | \$360.00 |
| Total Stewardship | \$85.26 | \$215.00 | \$2,192.85 | \$1,935.00 | \$1,239.63 | \$2,201.00 |
| Church Property | | | | | | |
| 9862 - Facility Staff-Salaries | \$9,862.84 | \$11,190.00 | \$127,833.91 | \$123,090.00 | \$130,214.39 | \$134,580.00 |
| 9864 - Social Security | \$754.53 | \$860.00 | \$9,283.38 | \$9,460.00 | \$9,245.06 | \$10,296.00 |
| 9868 - AudioNideorlephonics | \$0.00 | \$0.00 | \$47.48 | \$0.00 | \$0.00 | \$0.00 |
| 9870 - Electricity | \$1,713.58 | ~ | \$2,142.26 | \$25,500.00 | \$25,354.30 | \$27,500.00 |

Glenview Community Church
 Analysis of Revenues & Expenses - Detail Portrait 2009
 November 2009

| Accounts | MTDActual (This Year) | MTD Budget (This Year) | YTDActual (This Year) | YTD Budget (This Year) | YTD Actual (Last Year) | Annual Budget (This Year) |
|--|--------------------------|---------------------------|--------------------------|---------------------------|---------------------------|---------------------------------|
| 9872 - Water | \$0.00 | \$0.00 | \$2,400.12 | \$2,500.00 | \$3,278.22 | \$3,000.00 |
| 9874 - N. I. Gas | \$1,476.66 | \$2,500.00 | \$14,596.18 | \$25,200.00 | \$22,276.86 | \$28,275.00 |
| 9876 - HVAC Repair & Maintenance | \$57.70 | \$0.00 | \$2,536.64 | \$0.00 | \$0.00 | \$0.00 |
| 9878 - Building Repair and Maintenance | \$5,569.02 | \$2,300.00 | \$27,556.94 | \$25,300.00 | \$25,403.38 | \$27,500.00 |
| 9880 - Maintenance Contracts | \$0.00 | \$2,700.00 | \$34,047.21 | \$29,700.00 | \$31,189.81 | \$32,000.00 |
| 9882 - Scavenger | \$362.26 | \$375.00 | \$3,958.82 | \$4,125.00 | \$4,100.80 | \$4,500.00 |
| 9884 - Furn., Fixt., Equip. Purchase | \$131.34 | \$0.00 | \$2,585.38 | \$0.00 | \$0.00 | \$3,080.00 |
| Total Church Property | \$19,927.85 | \$22,225.00 | \$246,988.32 | \$244,875.00 | \$251,062.82 | \$270,731.00 |
| Pageant | | | | | | |
| 9912 - Pageant | \$282.54 | \$0.00 | \$282.54 | \$0.00 | \$0.00 | \$1,341.00 |
| Total Pageant | \$282.54 | \$0.00 | \$282.54 | \$0.00 | \$0.00 | \$1,341.00 |
| Capital Reserve | | | | | | |
| 9910 - Capital Reserve Expense | \$0.00 | \$0.00 | \$26,000.00 | \$0.00 | \$17,759.50 | \$0.00 |
| Total Capital Reserve | \$0.00 | \$0.00 | \$26,000.00 | \$0.00 | \$17,759.50 | \$0.00 |
| Total Expenses | \$84,477.42 | \$88,094.00 | \$1,079,162.05 | \$1,043,714.00 | \$1,121,242.35 | \$1,156,037.00 |
| Net Total | \$31,675.38 | \$19,846.00 | (\$9,989.41) | (\$87,435.00) | (\$140,770.08) | (\$30,350.00) |

Accounts

Assets

Current Assets

Cash

| | | |
|--------------------------------|-------------------|--|
| 1010 - Operating Account | \$153,963.41 | |
| 1200 - Special Petty Cash Fund | <u>\$1,000.00</u> | |
| Total Cash | \$154,963.41 | |

Investments

| | | |
|-------------------------------------|--------------------|--|
| 1110 - Housing Trust | \$392,746.00 | |
| 1120 - Merrill Lynch Govt. MF | \$229,187.42 | |
| 1130 - Nursery School Vanguard | \$100,343.24 | |
| 1140 - Romeiser Trust Account | \$175,105.00 | |
| 1160 - Endowment | \$136,667.00 | |
| 1170 - Wm. Blair Managed Cash | \$300,022.61 | |
| 1180 - Nursery School GSB CD#323510 | \$26,279.57 | |
| 1185 - Endowment Fund II | \$526,788.25 | |
| 1190 - Nursery School GSB CD#323512 | <u>\$30,889.97</u> | |
| Total Investments | \$1,918,029.06 | |

Prepaid Expenses

\$4,977.45

Total Current Assets

\$2,077,969.92

Fixed Assets

| | | |
|---------------------------------|-----------------------|-----------------------|
| 1770 - Church Land | \$100,126.50 | |
| 1790 - Church Garage & Contents | \$10,074.00 | |
| 1800 - Church Building | \$5,430,585.00 | |
| 1810 - Church Furnishings | \$426,130.00 | |
| 1815 - Office Equipment | \$91,458.00 | |
| 1816 - Art & Music Collections | \$50,400.00 | |
| 1817 - Organ | \$896,000.00 | |
| 1820 - Canoes | \$1,200.00 | |
| 1825 - Accumulated Depreciation | <u>(\$742,695.00)</u> | |
| Total Fixed Assets | | <u>\$6,263,278.50</u> |

Total Assets

\$8,341,248.42

Liabilities, Fund Principal, & Restricted Funds

Liabilities Withholding

Taxes

| | | |
|--------------------------|---------------------|--|
| 2900 - Withholding #403B | <u>(\$1,833.33)</u> | |
|--------------------------|---------------------|--|

Total Withholding Taxes

(\$1,833.33)

Fixed Assets

| | | |
|------------------------------------|----------------|--|
| 0001 - Represented by Fixed Assets | \$6,263,278.50 | |
|------------------------------------|----------------|--|

Total Fixed Assets

\$6,263,278.50

Total Liabilities

\$6,261,445.17

Fund Principal

| | | |
|---------------------------------------|---------------------|--|
| 0002 - Beginning Balance-General Fund | \$629.92 | |
| Excess Cash Received | <u>(\$9,989.41)</u> | |

Total Fund Principal and Excess Cash Received

(\$9,359.49)

Restricted Funds

| | | |
|------------------------------------|----------------|--|
| Total Temporarily Restricted Total | \$856,364.77 | |
| Permanently Restricted Total | \$1,232,797.97 | |

Restricted Funds

\$2,089,162.74

Total Liabilities, Fund Principal, & Restricted Funds

\$8,341,248.42

PLEDGE CONTRIBUTION REPORT

| MONTH | <u>2007 PLEDGE CONTRIBUTIONS</u> | | <u>2008 PLEDGE CONTRIBUTIONS</u> | | <u>2009 PLEDGE CONTRIBUTIONS</u> |
|-------------------------------|--------------------------------------|----|--------------------------------------|-----|--------------------------------------|
| January | \$ 56,063.34 | | \$ 62,768.86 | *** | \$ 135,012.50 |
| February | \$ 80,293.16 | * | \$ 102,471.29 | | \$ 121,499.49 |
| March | \$ 85,668.95 | ** | \$ 92,359.27 | | \$ 51,163.06 |
| April | \$ 93,927.70 | | \$ 66,588.90 | | \$ 90,801.88 |
| May | \$ 56,778.54 | | \$ 55,985.47 | | \$ 63,682.44 |
| June | \$ 67,220.94 | | \$ 54,904.79 | | \$ 67,713.68 |
| July | \$ 95,823.69 | | \$ 46,830.13 | | \$ 43,630.54 |
| August | \$ 50,718.28 | | \$ 55,487.39 | | \$ 67,482.28 |
| September | \$ 66,794.16 | | \$ 71,200.76 | | \$ 61,089.78 |
| October | \$ 84,059.35 | | \$ 82,426.78 | | \$ 52,804.55 |
| November | \$ 61,851.32 | | \$ 93,699.37 | | \$ 73,516.14 |
| December | <u>\$ 130,154.13</u> | | \$ 131,372.61 | | |
| Actual Pledge Contrib. | \$ 929,353.56 | | \$ 916,095.62 | | \$ 828,396.34 |
| Budget Pledge Contrib. | \$ 1,024,000.00 | | \$ 975,000.00 | | \$ 898,661.00 |
| Actual % to Budget | 90.80% | | 93.96% | | 92.18% |

*Changed to reflect \$25000 pledge from non-pledge (9107) in Feb. report per EB

**Changed to reflect total \$1000 addition from changes requested by members

*** **January 2009 changed to recognize all prepaid pledges paid in 2008 for 2009.**

Glenview Community Church - Comparative Revenues

| <u>Month</u> | <u>2009</u> | <u>2008</u> | <u>2007</u> | <u>2006</u> | <u>2005</u> | <u>2004</u> | <u>2003</u> |
|--------------|-----------------|----------------------|-----------------|-----------------|-----------------|-----------------|-----------------|
| January | \$ 182,244.67 * | \$ 80,188.95 | \$ 74,594.18 | \$ 106,429.51 | \$ 122,067.18 | \$ 70,691.23 | \$ 87,871.50 |
| February | \$ 140,263.93 | \$ 116,974.37 | 121,014.19 | 72,660.20 | 77,523.70 | 77,447.10 | 69,717.22 |
| March | \$ 69,135.75 | \$ 115,866.62 | 107,626.66 | 121,192.76 | 88,782.22 | 99,044.62 | 91,531.38 |
| April | \$ 122,302.93 | \$ 97,057.68 | 127,591.21 | 130,592.35 | 117,440.47 | 125,177.01 | 93,994.41 |
| May | \$ 85,527.31 | \$ 74,821.39 | 79,834.93 | 102,090.47 | 133,720.82 | 110,464.01 | 56,528.14 |
| June | \$ 76,035.14 | \$ 69,066.46 | 80,857.74 | 70,470.20 | 70,942.58 | 74,399.77 | 98,079.80 |
| July | \$ 46,223.52 | \$ 53,610.39 | 105,520.31 | 96,205.06 | 73,692.69 | 85,423.69 | 69,153.58 |
| August | \$ 74,403.35 | \$ 61,052.38 | 60,077.24 | 67,448.52 | 47,410.46 | 69,026.46 | 57,739.09 |
| September | \$ 77,175.34 | \$ 87,738.77 | 84,025.61 | 130,400.60 | 81,005.37 | 61,418.36 | 82,507.01 |
| October | \$ 79,707.90 | \$ 110,499.26 | 113,894.93 | 114,746.48 | 100,506.42 | 99,606.58 | 105,962.66 |
| November | \$ 116,152.80 | \$ 113,596.00 | 92,347.73 | 99,354.96 | 85,391.80 | 61,320.78 | 93,377.26 |
| December | | \$ <u>210,788.30</u> | 199,794.80 | 173,460.38 | 157,802.19 | 108,993.97 | 130,495.10 |
| Total Actual | \$ 1,069,172.64 | \$ 1,191,260.57 | \$1,247,179.53 | \$ 1,285,401.49 | \$ 1,154,885.90 | \$ 1,043,013.58 | \$ 1,058,457.15 |
| Budget | 1125687 | \$ 1,231,931.00 | \$ 1,253,060.00 | \$ 1,184,026.08 | \$ 1,137,000.00 | \$ 1,047,936.00 | \$ 1,108,823.00 |
| Percent | ~ | ~ | ~ | ~ | <u>101.6%</u> | ~ | ~ |