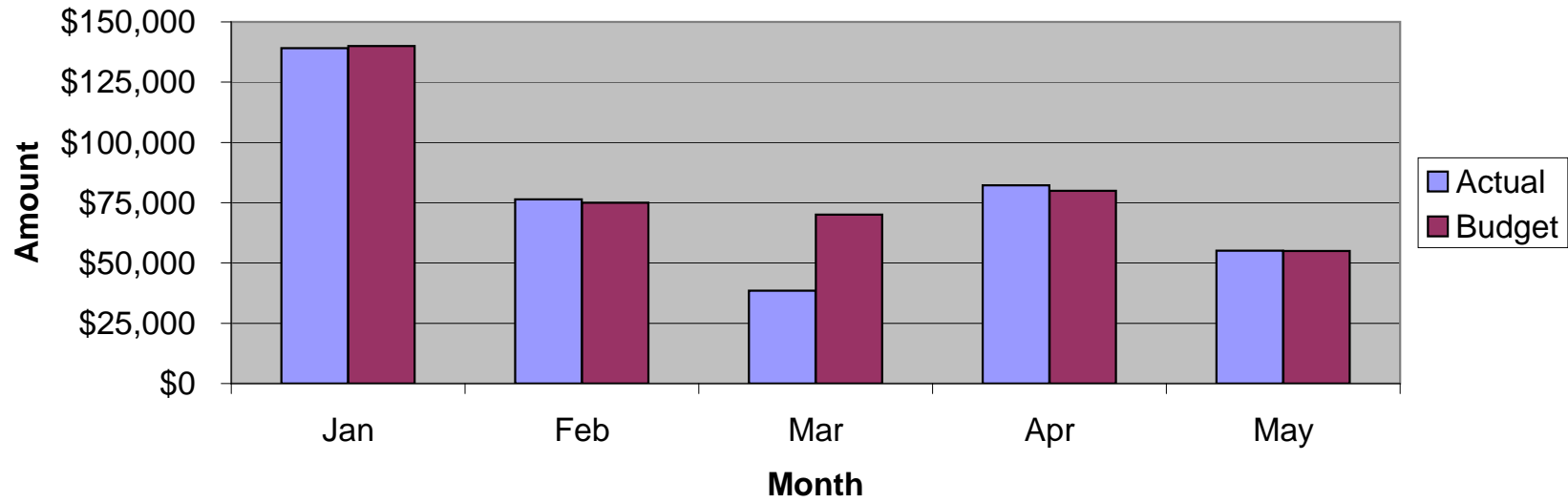


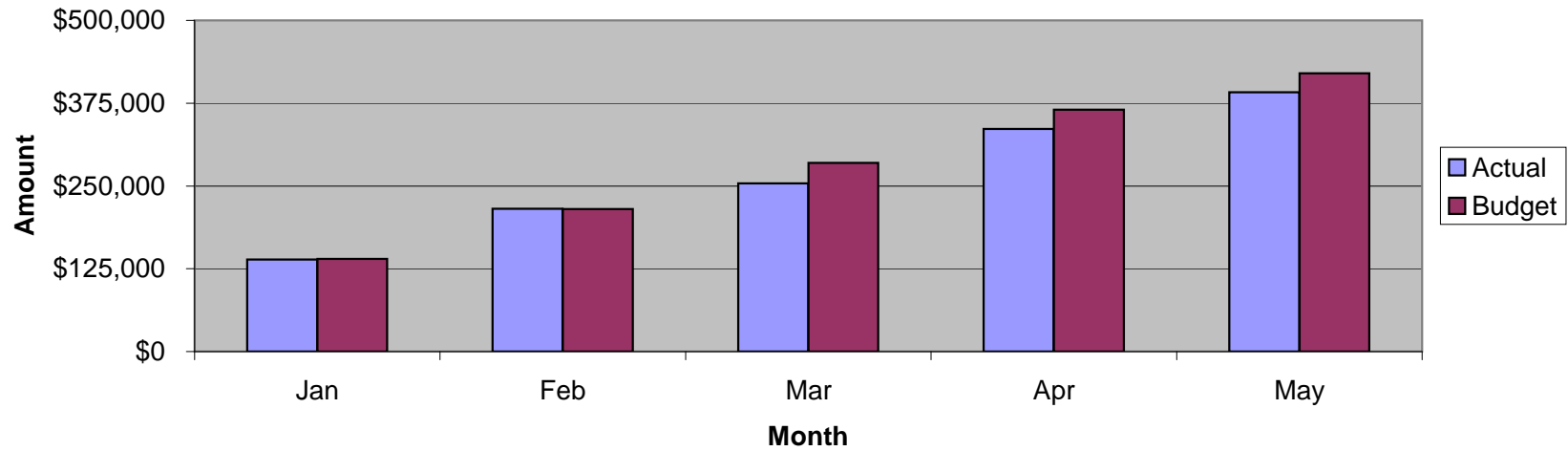
**Glenview Community Church
YTD Revenue Expense Summary**

		YTD	YTD	YTD	Notes
	May-10	Actual	Budget	Over/(Under)	General Note: Most revenue accounts and certain expenses have been seasonally adjusted.
				Budget	
Revenues					
Current Pledge Contrib	55,136	391,321	420,000	(28,679)	
Non-Pledge Contrib	4,087	32,515	20,500	12,015	
Pledge Overage	1,365	2,054	6,800	(4,746)	
Prior Year Pledges	-	9,950	10,000	(50)	
Loose Offerings	601	3,704	4,300	(596)	
Women's Assoc	2,500	7,500	7,500	-	
Fees & Nursery School	3,593	25,887	25,100	787	
Interest	5	21	165	(144)	
Housing Trust	-	2,324	1,900	424	
Endowment I	-	918	-	918	
Endowment II	573	3,815	4,750	(935)	
Mission Offering	50	8,617	10,600	(1,983)	
Special Events Income	-	696	1,500	(804)	
Total Revenues	67,909	489,322	513,115	(23,793)	
Expenses					
Pastoral	17,087	114,141	114,355	(214)	
Missions	7,848	47,607	49,590	(1,983)	
Children's Ministry	2,527	13,266	15,101	(1,835)	
Confirmation & Youth	3,293	16,304	17,173	(869)	
Pastoral Care	4,500	22,877	22,725	152	
Membership	-	424	1,325	(901)	
Adult Education	-	400	805	(405)	
Services & Sacraments	-	118	250	(132)	
Fellowship	-	(89)	375	(464)	
Music	13,953	43,390	42,040	1,350	
Stewardship	-	995	1,775	(780)	
General & Administrative	14,036	70,069	75,740	(5,671)	Primarily lower supply expenses
Church Property	22,483	108,011	124,560	(16,549)	Primarily lower utilities and maintenance
Pageant	-	363	400	(38)	
Capital Reserve	2,322	11,610	11,610	-	
Total Expenses	88,049	449,485	477,824	(28,339)	
Net	(20,140)	39,837	35,291	4,546	
General Fund	40,940				
Capital Reserve	246,448				

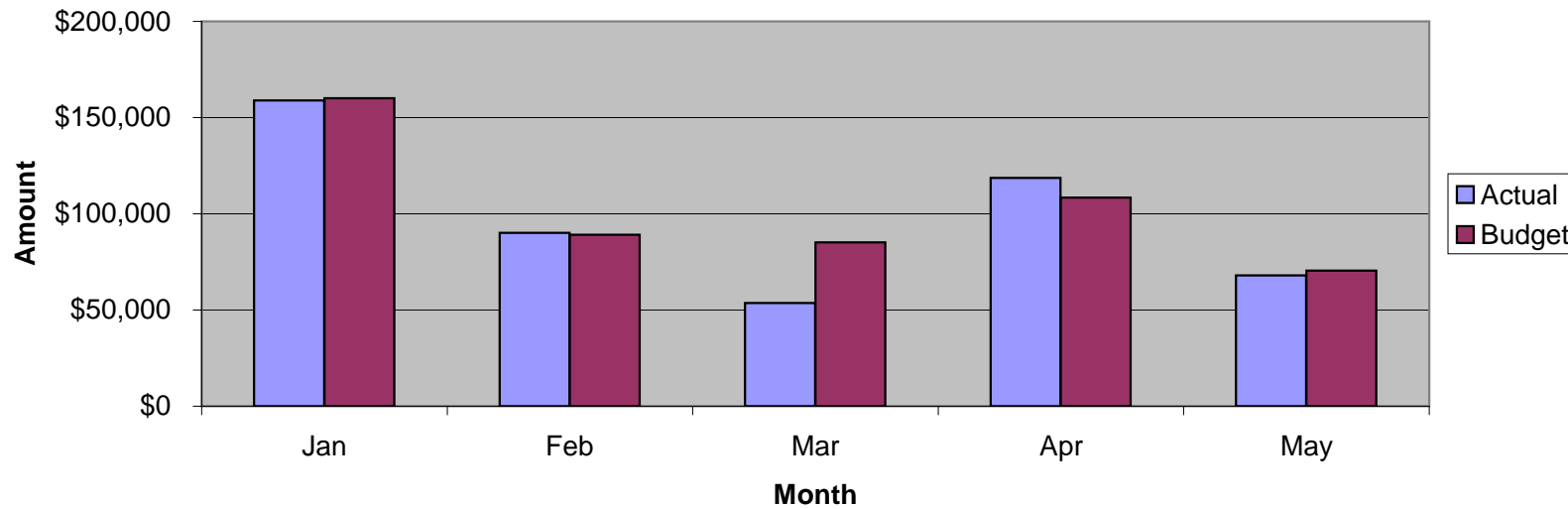
Monthly Pledges - Actual vs. Budget



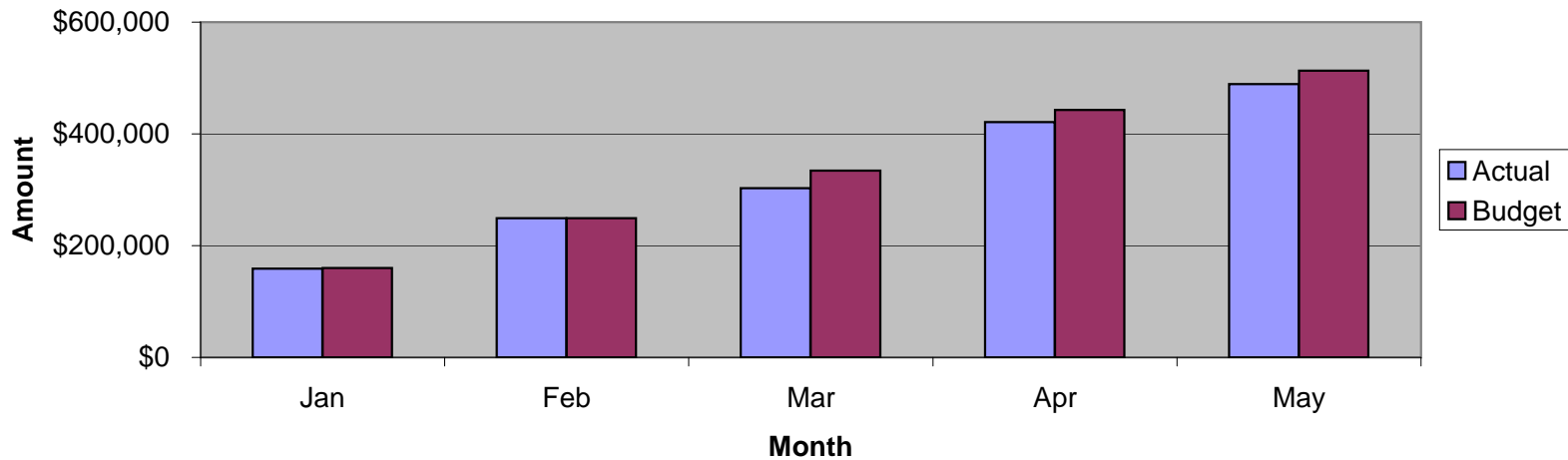
YTD Pledges - Actual vs. Budget



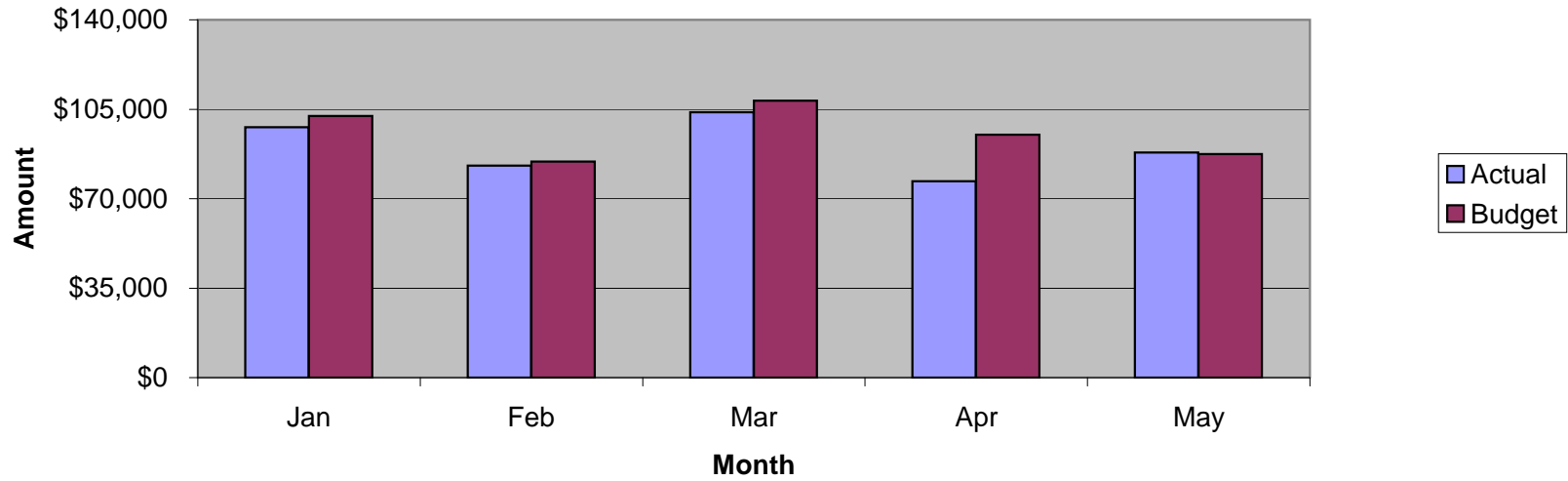
Monthly Revenue - Actual vs. Budget



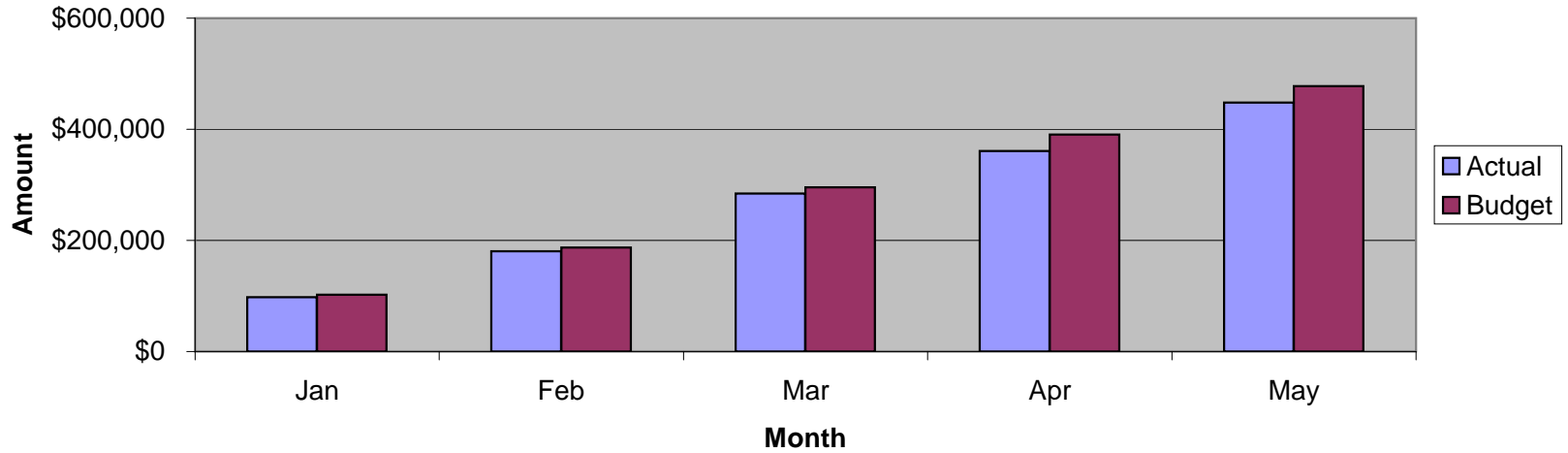
YTD Revenue - Actual vs. Budget



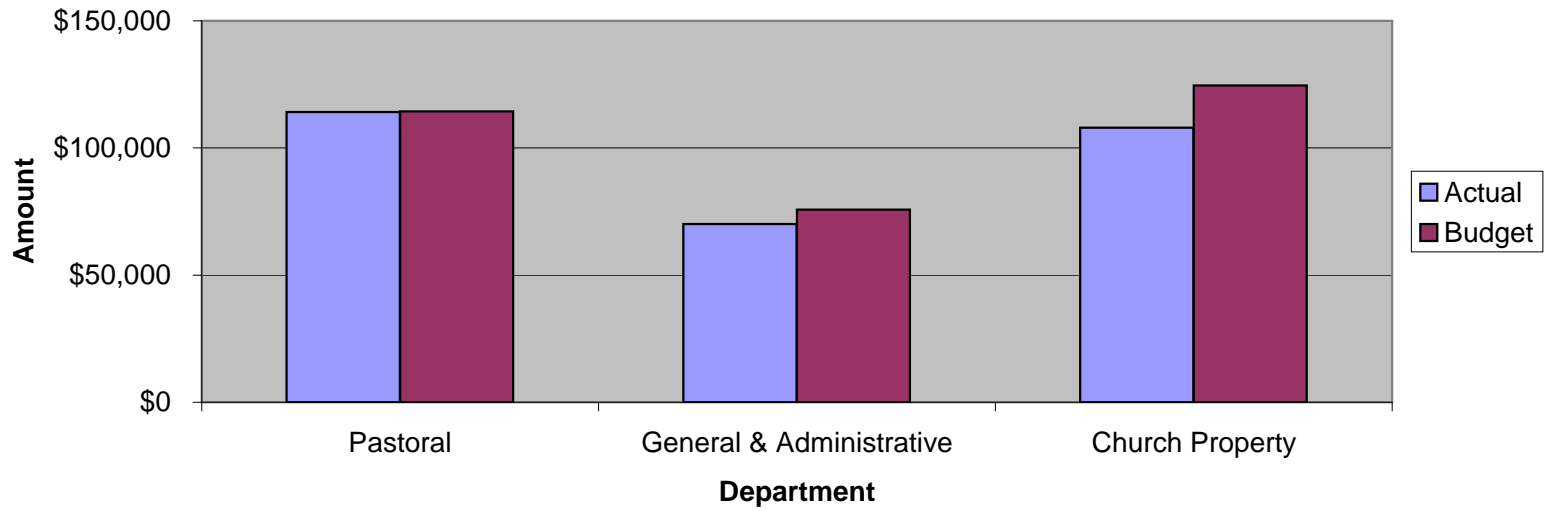
Monthly Expenses - Actual vs. Budget



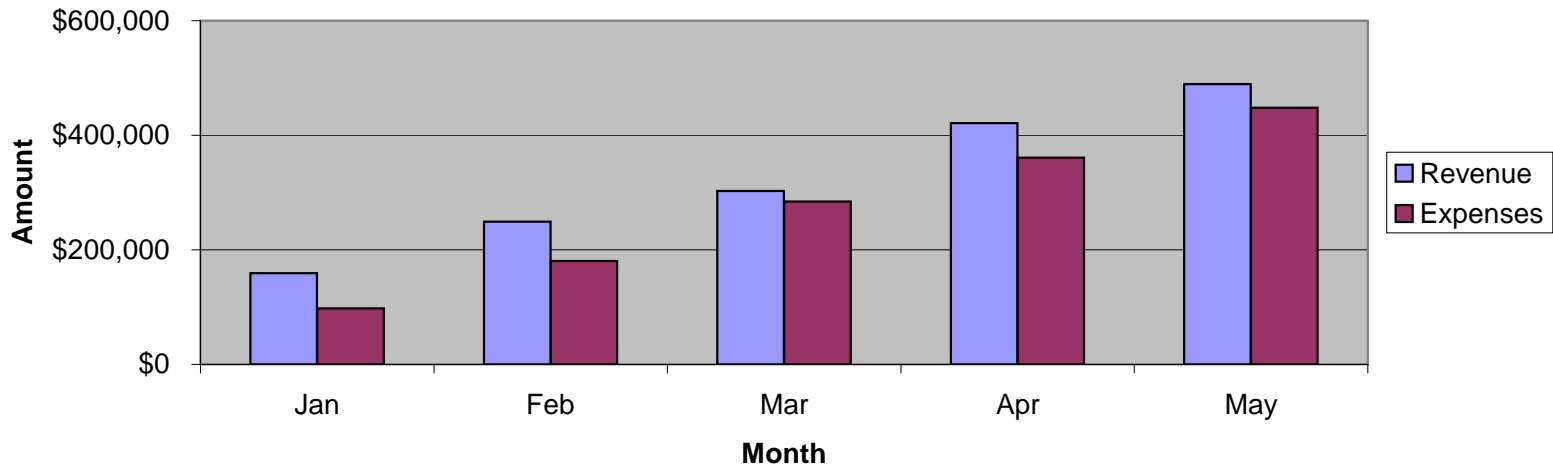
YTD Expenses - Actual vs. Budget



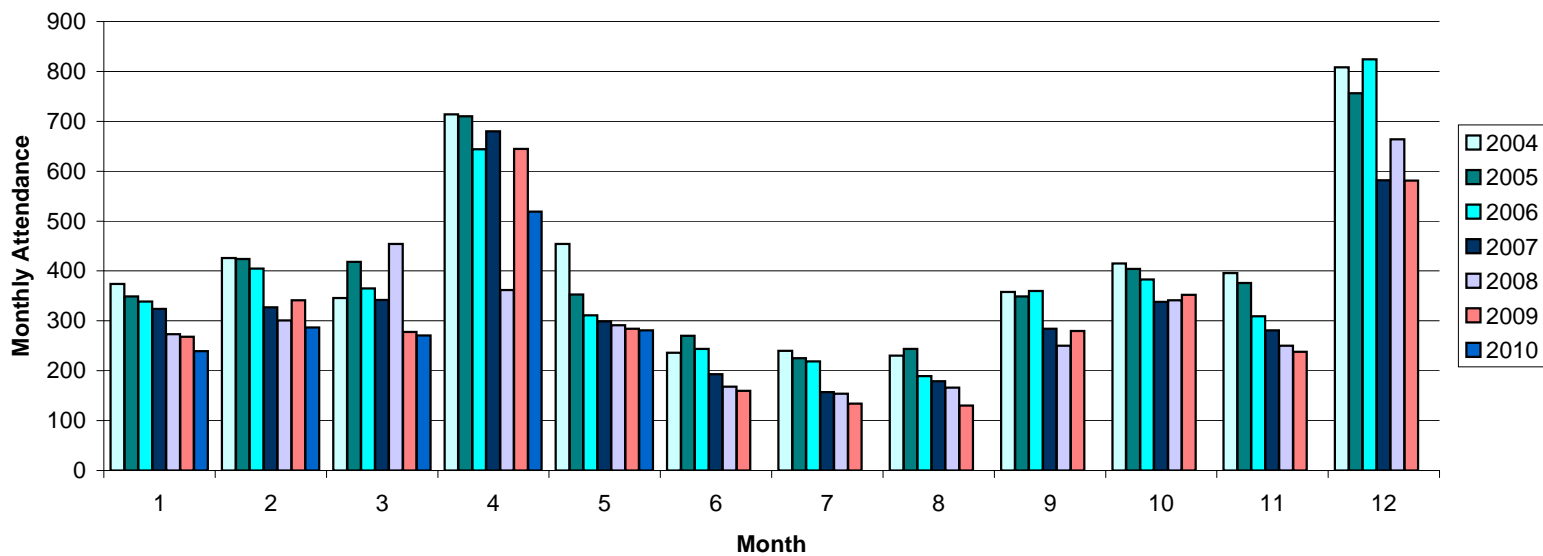
YTD Operations - Actual vs. Budget



YTD Actual - Revenue & Expenses



Sunday Average Attendance - Monthly



Sunday Average Attendance - Cumulative

