

Glenview Community Church Adult Education Board Minutes

MEETING DATE/TIME/PLACE: Tuesday, September 13, 2011/ 7:00 pm/ Founders' Room

MEMBERS PRESENT: Tom Aldrich, Chris Calandra, Marvin Johnson, John Miller, Mickey Safstrom, Kim Yagelski

Members excused: Mark Brown, Linda Doede, Tracy Sawires, and Nancy Winton

Guest: Rev. Dr. Doug Busby

CALL TO ORDER and WELCOME:

1. Tom Aldrich called the meeting to order at 7:05. John Miller read *The Lily*, a poem by Mary Oliver. The poem illustrated how the daily cycle of the life of the lily, and of all things, is a perfect prayer.
2. The minutes from the August meeting were accepted as written.
3. Tom distributed the meeting agenda, the church directories, the long range goals for the Adult Ed board, and a tentative schedule of speakers/presentations for the 2011-12 season.
4. John Miller has agreed to be vice chair of the Adult Ed board.
5. Several people shared their thoughts and concerns about friends and relatives who are facing illness. We will keep all in our thoughts and prayers.
6. Marvin and Mickey indicated that they will miss the October board meeting.

NEW BUSINESS:

1. Flu and pneumonia shots will be offered at GCC on October 8 from 9-11am. Cost is thought to be around \$20.
2. Tom reported on the Leadership Retreat which was held on August 27 at Covenant Village. The main topic of the day was the transition period that GCC is going through as it searches for a new senior minister. Rev. Busby spoke about his role in the transition, discussing both his personal commitment to the process and the expectations set out in his contract with the church. During the transition period Rev. Busby will
 1. Help the congregation heal and strengthen
 2. Help GCC to reconnect with the United Church of Christ denomination as a whole, and specifically the Chicago Metropolitan Association of the UCC
 3. Help to increase membership by encouraging members who have fallen away to return, as well as encouraging the church to engage in greater outreach to the community to welcome all to GCC
3. Our board has Coffee service three times during the year, October 9, January 29, and May 13. We need two people to serve and one to man the Visitor Table in the Narthex following the 10 am service.
4. We briefly discussed the long-range goals of the Adult Ed Board. Tom asked that everyone carefully read through the goals and call or email him with any suggestions for changes before the Executive Board meeting on September 27.
5. Tom began the discussion of scheduling by referring to the draft of the 2011-12 Adult Ed Program Schedule. In addition to our Sunday morning presentations there are a number of weeknight events that our board is supporting or sponsoring that will occur throughout the year. Suggested speakers and topics include:

Dr. Elliot Lefkowitz, Education Consultant of Am Yisrael Congregation speaking about the Holocaust
Stuart Simon, Cantor of Am Yisrael Congregation in Northfield
Dale Edmonds
Neal Grossman speaking about near-death experience
George Cairns

Fasting During Lent (program idea suggested by Bill Dailey)

Possible Series:

Great Books—four weeks in either November and January or January and February by Allan Ruter

The Afterlife/Near-Death experiences

Heaven and Hell

Quantum Physics and Spirituality

Relational Interdependence

The Butterfly Effect

Old and/or New Testament Bible studies during Lent or other times

6. Chris will contact Dale Edmonds, John will contact Neal Grossman, and Kim will contact Phyllis Scott about scheduling presentations; Tom has spoken with Allan Ruter.

Tom adjourned the meeting at 9:00 pm with the Lord's Prayer.

SUBMITTED ON: Thursday, September 15, 2011 by Chris Calandra

***NEXT BOARD MEETING: Tuesday, October 9, 2011 at 7 pm in the Founders' Room. The opening reflection will be given by Chris Calandra.**

Tentative Adult Education Program Schedule 2011-2012 (suggested topics/speakers are italicized and subject to discussion and change)

September:

- 4 Labor Day weekend—No Adult Ed
- 11 Erika and Gretchen Grad speak about their mission trip to Kenya—Matanya's Hope
- 18 Rev. Busby presents The Introduction to the Power of Prayer and Healing
- 23 Friday Evening Common Ground Presentation 7-9 pm at GCC—Jim Kenney
- 25 The Human Subtle Energy Field and Healing

October:

- 2 Healing Touch, Reiki, and Acupuncture
- 9 PYF youth discuss their June, 2011 mission trip to Logan, West Virginia (Coffee Hour Service)
- 16 *Series ???*
- 23 *Series ???*
- 28 Friday Evening Common Ground Presentation 7-9 pm at GCC—John Wasik
- 30 *Series ???*

November:

- 6 *Series ???*
- 13 *Series ???*

18 Sunday Evening Common Ground Presentation 7-9 pm at GCC—Jim Kenney

20 *Series ???*

27 Thanksgiving Weekend—No Adult Ed

December:

4 Pageant—No Adult Ed

11 *Advent/Christmas Bible study or Music study (origin of Christmas Carols ?)*

18 *Advent/Christmas Bible study or Music study (origin of Christmas Carols ?)*

25 Christmas Weekend—No Adult Ed

January:

1 New Year's weekend—No Adult Ed

8 *UCC Polity and History*

15

22 *Bridging Medicare and Theology—What Do We Mean by the “Human Spirit”?*

29 (Coffee Hour Service)

February

5 *Is Salvation Only for Christians?*

12 *Is Death Healing?*

19 *What Did Jesus mean when he said “In My Name” ?*

19 The Holocaust Cantata 4 pm at GCC with Dr. Lefkovitz and Stuart Simon from Am Yisrael

26 George Cairns?

March:

4 *Lenten Series—Bible Study or?*

11 *Lenten Series—Bible Study or?*

18 *Lenten Series—Bible Study or?*

25 *Lenten Series—Bible Study or?*

April:

1 Palm Sunday

8 Easter—No Adult Ed

15 *Who Is God and How Can We Find God? (Paul Tillich, Marcus Borg) or Christianity, Judaism & Islam*

22 “ “ “

29 “ “ “

May: potential subjects: Mediation and Conflict, Music/Art, Bible Study

Shane asked that the board review the LRP goals and Children's Board's goals and reply to her with any changes by the end of the month.

Vice Chair Report

Chris

Chris expanded on church goals and the communication/marketing goal we should focus on as a church. A discussion of leveraging a strong children's program to draw in new membership. Chris discussed leveraging social networking (Facebook, Twitter) as the quickest and easiest way to reach many people and spread information about the church to others. A web page is much more difficult to build and maintain and requires much dedication. The board agreed that communication should be one of our goals this year.

Directors Report

Kathy

The nursery and toddler room is being run by Denise Morgan. Kathy Lifton, Denise and other volunteers are transforming the former cradle toddler room to the pre-school (3's-4's) Sunday School room. The room that once housed the cribs will become the new nursery. Kathy discussed the desire to move towards a more biblical pre-school vs. "toy" pre-school and have new format for the pre-schoolers.

Kathy noted that there were teachers in place for 4th-6th grade, but not K-3rd grade. Several Board members offered to step in as teachers, both temporary or permanent and to assist in finding Sunday School teachers.

Based on Sunday school registration, classroom sizes are as follows: K- 11; 1st- 24; 2nd- 22; 3rd- 30; 4th- 30; 5th- 37; 6th- 25. Class room space continues to be an issue, particularly with the grades with over 20 students. Kathy and Shane will continue to work on an optimal solution to accommodate the Sunday School classes.

Children's board has \$500 to spend on outreach to children's missions. It was proposed that the 5th and 6th graders research ideas and vote on the final mission.

Board members will assist teachers on rally day and begin in room 201 and sit with the grade each was assigned to be liaison to. Julie and Shane will also help set up games on the lawn after church and before rally day begins at 11:15a.m.

Children's Board Sunday School Class Connections:

Nursery/Preschool – Emily Davis

Kindergarten – Kathy Crawford/Megan McClung

1st Grade – Tracey Noe

2nd Grade – Shane Bill

3rd Grade – Laura McNeela

4th Grade – Chris McGuire

5th Grade – Julie Zylke

6th Grade – Pam Reidy

The meeting was adjourned with the Lord's Prayer at 8:45 p.m.

Next meeting: October 4, 7:00p.m.

Glenview Community Church
 Analysis of Revenues & Expenses - Summary Portrait 2011
 August 2011

Accounts	MTD Actual (This Year)	MTD Budget (This Year)	YTD Actual (This Year)	YTD Budget (This Year)	YTD Actual (Last Year)	Annual Budget (This Year)
Revenues						
Total Revenues	\$68,251.79	\$59,309.00	\$673,861.43	\$663,022.00	\$672,028.04	\$1,090,096.00
Expenses						
Pastoral Expenses	\$15,160.83	\$18,389.00	\$170,813.13	\$176,835.00	\$179,618.35	\$260,687.00
Missions	\$7,306.00	\$7,306.00	\$67,223.79	\$68,693.00	\$71,001.25	\$110,365.00
Children's Ministry	\$2,195.89	\$2,365.00	\$22,034.32	\$23,390.00	\$21,064.53	\$36,971.00
Confirmation & Youth Ministry	\$170.00	\$460.00	\$20,120.04	\$21,666.00	\$21,419.40	\$35,437.00
Pastoral Care	\$4,520.13	\$4,520.00	\$36,676.92	\$36,760.00	\$36,396.07	\$55,041.00
Membership	\$80.24	\$0.00	\$517.71	\$800.00	\$424.09	\$1,300.00
Adult Education	\$0.00	\$50.00	\$200.00	\$600.00	\$400.00	\$2,050.00
Services & Sacraments	\$18.78	\$0.00	\$61.67	\$299.00	\$117.95	\$490.00
Fellowship	\$0.00	\$0.00	\$97.74	\$450.00	(\$88.90)	\$750.00
Music	\$7,755.52	\$6,910.00	\$68,343.47	\$68,091.00	\$59,615.09	\$106,336.00
General & Administrative	\$15,930.40	\$13,572.00	\$121,777.91	\$118,692.00	\$112,173.28	\$202,570.00
Stewardship	\$0.00	\$500.00	(\$16.20)	\$2,020.00	\$1,254.69	\$4,200.00
Church Property	\$22,284.98	\$20,459.00	\$171,857.52	\$181,211.00	\$181,679.02	\$265,840.00
Pageant	\$0.00	\$0.00	\$642.29	\$645.00	\$362.50	\$1,600.00
Capital Reserve	\$0.00	\$0.00	\$0.00	\$0.00	\$18,576.00	\$0.00
Long Range Plan Funds	\$0.00	\$0.00	\$0.00	\$0.00	\$0.00	\$0.00
Total Expenses	\$75,422.77	\$74,531.00	\$680,350.31	\$700,152.00	\$704,013.32	\$1,083,637.00
Net Total	(\$7,170.98)	(\$15,222.00)	(\$6,488.88)	(\$37,130.00)	(\$31,985.28)	\$6,459.00

August 2011

Accounts	MTD Actual (This Year)	MTD Budget (This Year)	YTD Actual (This Year)	YTD Budget (This Year)	YTD Actual (Last Year)	Annual Budget (This Year)
Revenues						
9105 - Current Pledge Contributions	\$60,808.95	\$55,000.00	\$568,019.95	\$550,013.00	\$545,910.84	\$868,652.00
9107 - Non-Pledge Contributions	\$1,115.00	\$2,000.00	\$30,758.00	\$34,710.00	\$38,468.00	\$60,000.00
9109 - Pledge Overage Contributions	\$4,490.66	\$1,500.00	\$7,530.66	\$4,855.00	\$4,274.66	\$35,000.00
9110 - Prior Year Pledge	\$0.00	\$0.00	\$8,190.00	\$10,000.00	\$9,950.00	\$10,000.00
9115 - Loose Offering	\$284.00	\$300.00	\$4,474.41	\$4,210.00	\$4,273.88	\$7,000.00
9124 - Church School Offering	\$0.00	\$0.00	\$0.00	\$100.00	\$198.93	\$250.00
9130 - Women's Association	\$0.00	\$0.00	\$12,500.00	\$10,000.00	\$10,000.00	\$10,000.00
9135 - Building Fees	\$50.00	\$500.00	\$5,155.00	\$5,480.00	\$11,762.00	\$8,000.00
9142 - Nursery School	\$0.00	\$0.00	\$18,715.55	\$18,286.00	\$18,715.55	\$32,844.00
9145 - Interest Income	\$91.84	\$9.00	\$4,558.39	\$63.00	\$45.37	\$100.00
9147 - Housing Trust Income	\$719.54	\$0.00	\$1,099.09	\$1,000.00	\$2,978.60	\$8,500.00
9155 - Endowment Income	\$0.00	\$0.00	\$1,640.00	\$2,000.00	\$2,003.83	\$7,750.00
9157 - Wirth Endowment Income	\$0.00	\$0.00	\$1,942.79	\$4,250.00	\$6,134.33	\$9,500.00
9170 - Neighbors In Need	\$0.00	\$0.00	\$0.00	\$0.00	\$0.00	\$1,700.00
9175 - Thanksgiving	\$0.00	\$0.00	\$0.00	\$0.00	\$0.00	\$3,000.00
9180 - Christmas	\$0.00	\$0.00	\$755.00	\$755.00	\$200.00	\$8,500.00
9185 - Easter	\$0.00	\$0.00	\$6,563.79	\$8,000.00	\$6,978.25	\$8,000.00
9190 - One Great Hour of Sharing	\$0.00	\$0.00	\$1,267.00	\$1,300.00	\$1,439.00	\$1,300.00
9199 - Special Events Income	\$691.80	\$0.00	\$691.80	\$8,000.00	\$8,694.80	\$10,000.00
Total Revenues	\$68,251.79	\$59,309.00	\$673,861.43	\$663,022.00	\$672,028.04	\$1,090,096.00
Expenses						
Pastoral Expenses						
9302 - Salaries	\$7,667.17	\$8,313.00	\$65,861.11	\$66,509.00	\$66,204.19	\$99,761.00
9304 - Auto Expense	\$370.18	\$350.00	\$2,078.59	\$2,650.00	\$1,791.90	\$4,000.00
9306 - Expense Reimbursement	\$0.00	\$100.00	\$640.22	\$650.00	\$512.20	\$1,050.00
9308 - Annuities	\$0.00	\$0.00	\$16,753.79	\$19,500.00	\$19,511.31	\$26,015.00
9310 - Conferences / Continuing Educa	\$0.00	\$750.00	\$1,672.05	\$1,575.00	\$1,584.77	\$2,500.00
9312 - Senior Minister Allowance	\$0.00	\$50.00	\$319.19	\$460.00	\$729.97	\$750.00
9314 - Housing Allowance	\$5,583.33	\$7,636.00	\$59,037.66	\$61,092.00	\$57,702.72	\$91,636.00
9316 - Assoc. Minister Allowance	\$0.00	\$50.00	\$618.01	\$450.00	\$853.08	\$750.00
9380 - Guest Minister	\$100.00	\$0.00	\$1,275.00	\$0.00	\$0.00	\$0.00
9382 - Insurance-Health	\$0.00	\$0.00	\$13,157.13	\$14,829.00	\$21,946.77	\$20,545.00
9384 - Social Security Add On	\$1,440.15	\$1,140.00	\$9,400.38	\$9,120.00	\$8,781.44	\$13,680.00
Total Pastoral Expenses	\$15,160.83	\$18,389.00	\$170,813.13	\$176,835.00	\$179,618.35	\$260,687.00
Missions						
9450 - Mission Offering	\$0.00	\$0.00	\$8,585.79	\$10,055.00	\$8,617.25	\$22,500.00
9454 - Missions	\$7,306.00	\$7,306.00	\$58,638.00	\$58,638.00	\$62,384.00	\$87,865.00
Total Missions	\$7,306.00	\$7,306.00	\$67,223.79	\$68,693.00	\$71,001.25	\$110,365.00
Children's Ministry						
9464 - Salaries-CM	\$1,817.67	\$1,818.00	\$17,927.76	\$17,928.00	\$17,431.80	\$27,456.00
9466 - SS-CM	\$139.06	\$182.00	\$1,371.53	\$1,372.00	\$1,333.50	\$2,100.00
9468 - Spiritual Formation	\$0.00	\$0.00	\$88.78	\$960.00	\$566.05	\$1,600.00
9472 - Teacher Training & Appreciation	\$0.00	\$365.00	\$0.00	\$365.00	\$0.00	\$365.00
9476 - CradleToddler Supplies	\$0.00	\$0.00	\$0.00	\$240.00	\$0.00	\$500.00
9488 - Fellowship	\$139.16	\$0.00	\$283.46	\$100.00	\$157.69	\$600.00
9490 - Education & Spiritual Formation	\$0.00	\$0.00	\$1,094.31	\$850.00	\$1,002.60	\$1,700.00
9494 - Mission & Outreach	\$0.00	\$0.00	\$168.48	\$150.00	\$247.89	\$150.00
9496 - Childcare	\$100.00	\$0.00	\$1,100.00	\$1,425.00	\$325.00	\$2,500.00
Total Children's Ministry	\$2,195.89	\$2,365.00	\$22,034.32	\$23,390.00	\$21,064.53	\$36,971.00
Confirmation & Youth Ministry						
9526 - Salaries-CY	\$0.00	\$0.00	\$16,072.80	\$16,072.00	\$15,604.80	\$26,788.00
9528 - SS-CY	\$0.00	\$0.00	\$1,229.57	\$1,229.00	\$1,193.76	\$2,049.00
9530 - Jr High - Confirmation	\$0.00	\$0.00	\$733.05	\$1,555.00	\$1,838.56	\$1,850.00
9532 - Jr High - Social	\$0.00	\$100.00	\$203.26	\$100.00	\$89.98	\$250.00
9536 - Sr High - Education	\$170.00	\$360.00	\$1,019.73	\$1,310.00	\$1,559.11	\$2,000.00
9538 - Sr High - Social	\$0.00	\$0.00	\$861.63	\$1,400.00	\$1,133.19	\$2,500.00
Total Confirmation & Youth Ministry	\$170.00	\$460.00	\$20,120.04	\$21,666.00	\$21,419.40	\$35,437.00
Pastoral Care						
9550 - Salaries-PN	\$4,520.13	\$4,520.00	\$36,161.04	\$36,160.00	\$35,802.96	\$54,241.00
9552 - Pastoral Care Board	\$0.00	\$0.00	\$470.54	\$600.00	\$593.11	\$800.00

Glenview Community Church
 Analysis of Revenues & Expenses - Detail Portrait 2011
 August 2011

Accounts	MTD Actual (This Year)	MTD Budget (This Year)	YTD Actual (This Year)	YTD Budget (This Year)	YTD Actual (Last Year)	Annual Budget (This Year)
9554 - Called To Care Ministry	\$0.00	\$0.00	\$45.34	\$0.00	\$0.00	\$0.00
Total Pastoral Care	\$4,520.13	\$4,520.00	\$36,676.92	\$36,760.00	\$36,396.07	\$55,041.00
Membership						
9576 - Membership	\$80.24	\$0.00	\$517.71	\$800.00	\$424.09	\$1,300.00
Total Membership	\$80.24	\$0.00	\$517.71	\$800.00	\$424.09	\$1,300.00
Adult Education						
9602 - Program	\$0.00	\$0.00	\$200.00	\$400.00	\$400.00	\$1,600.00
9614 - Miscellaneous	\$0.00	\$50.00	\$0.00	\$200.00	\$0.00	\$400.00
9616 - Literature & Library	\$0.00	\$0.00	\$0.00	\$0.00	\$0.00	\$50.00
Total Adult Education	\$0.00	\$50.00	\$200.00	\$600.00	\$400.00	\$2,050.00
Services & Sacraments						
9624 - Sacred Services	\$18.78	\$0.00	\$61.67	\$299.00	\$117.95	\$490.00
Total Services & Sacraments	\$18.78	\$0.00	\$61.67	\$299.00	\$117.95	\$490.00
Fellowship						
9636 - Special Functions	\$0.00	\$0.00	\$63.00	\$450.00	(\$88.90)	\$600.00
9640 - Miscellaneous	\$0.00	\$0.00	\$34.74	\$0.00	\$0.00	\$150.00
Total Fellowship	\$0.00	\$0.00	\$97.74	\$450.00	(\$88.90)	\$750.00
Music						
9648 - Salaries-Music	\$6,500.00	\$5,625.00	\$52,164.45	\$51,289.00	\$43,756.46	\$78,821.00
9650 - SS-Music	\$497.26	\$430.00	\$3,990.63	\$3,922.00	\$3,347.37	\$6,030.00
9652 - General - Instrumentalists	\$0.00	\$0.00	\$5,585.00	\$6,275.00	\$5,472.50	\$10,025.00
9654 - General - Organ & Piano Care	\$160.00	\$500.00	\$2,415.00	\$2,450.00	\$2,495.00	\$5,825.00
9656 - General - Cleaning Robes	\$0.00	\$0.00	\$0.00	\$245.00	\$245.00	\$375.00
9660 - General - Sub. Organist	\$175.00	\$0.00	\$825.00	\$800.00	\$800.00	\$1,300.00
9666 - Chancel Choir - Music	\$0.00	\$0.00	\$944.69	\$600.00	\$209.71	\$1,100.00
9668 - Chancel Choir - Misc.	\$0.00	\$0.00	\$0.00	\$0.00	\$250.00	\$0.00
9670 - Organ Music	\$0.00	\$0.00	\$370.22	\$500.00	\$636.37	\$500.00
9772 - Bell Choir - Music	\$423.26	\$0.00	\$738.15	\$500.00	\$1,059.38	\$850.00
9780 - Children's Choir - Music	\$0.00	\$355.00	\$630.33	\$830.00	\$683.30	\$830.00
9784 - Copyright Expenses	\$0.00	\$0.00	\$680.00	\$680.00	\$660.00	\$680.00
Total Music	\$7,755.52	\$6,910.00	\$68,343.47	\$68,091.00	\$59,615.09	\$106,336.00
General & Administrative						
9822 - Postage (except B'dcaster)	\$0.00	\$600.00	\$2,360.09	\$3,615.00	\$4,165.01	\$6,000.00
9830 - Social Security	\$706.30	\$607.00	\$4,958.30	\$4,861.00	\$4,717.84	\$7,289.00
9832 - Office Staff Salaries	\$9,232.57	\$7,940.00	\$64,813.20	\$63,521.00	\$61,670.64	\$95,281.00
9834 - Payroll Service	\$384.41	\$350.00	\$3,773.71	\$3,255.00	\$3,351.13	\$4,700.00
9836 - Telephone	\$441.78	\$650.00	\$3,691.14	\$5,370.00	\$4,185.29	\$8,000.00
9838 - Stationery & Supplies	\$1,056.87	\$1,400.00	\$6,077.86	\$6,335.00	\$4,574.46	\$10,000.00
9840 - Equip. Maintenance! Repair	\$1,420.62	\$1,500.00	\$12,065.66	\$11,000.00	\$10,667.78	\$18,000.00
9842 - Broadcaster	\$29.96	\$0.00	\$1,714.96	\$2,300.00	\$2,891.33	\$3,800.00
9844 - Financial Review	\$0.00	\$0.00	\$0.00	\$0.00	\$0.00	\$5,000.00
9846 - Communications/Promotions	\$187.00	\$250.00	\$996.50	\$1,010.00	\$457.00	\$1,400.00
9848 - Kitchen	\$0.00	\$220.00	\$1,047.17	\$1,240.00	\$1,778.81	\$2,000.00
9850 - Insurance--Prop/Casualty/Work	\$1,415.16	\$0.00	\$16,576.86	\$14,500.00	\$12,743.85	\$38,500.00
9852 - Miscellaneous	\$65.00	\$0.00	\$483.74	\$260.00	\$256.54	\$460.00
9854 - Office Equipment Purchase	\$837.53	\$0.00	\$2,646.52	\$1,000.00	\$361.07	\$1,500.00
9855 - Executive Board Expenses	\$90.00	\$0.00	\$130.00	\$40.00	\$73.73	\$40.00
9856 - Bank Fees	\$63.20	\$55.00	\$442.20	\$385.00	\$278.80	\$600.00
Total General & Administrative	\$15,930.40	\$13,572.00	\$121,777.91	\$118,692.00	\$112,173.28	\$202,570.00
Stewardship						
9802 - Offering Envelopes	\$0.00	\$0.00	(\$36.52)	\$0.00	(\$110.00)	\$450.00
9803 - Stationery	\$0.00	\$250.00	\$20.32	\$1,270.00	\$90.00	\$1,800.00
9804 - Postage	\$0.00	\$0.00	\$0.00	\$0.00	\$0.00	\$950.00
9810 - Miscellaneous	\$0.00	\$250.00	\$0.00	\$750.00	\$1,274.69	\$1,000.00
Total Stewardship	\$0.00	\$500.00	(\$16.20)	\$2,020.00	\$1,254.69	\$4,200.00
Church Property						
9862 - Facility Staff-Salaries	\$11,317.12	\$11,000.00	\$87,962.48	\$87,996.00	\$87,326.27	\$131,996.00
9863 - Facility Staff - Overtime expense	\$314.41	\$300.00	\$2,134.01	\$1,600.00	\$1,581.00	\$2,500.00
9864 - Social Security	\$889.78	\$841.00	\$6,892.23	\$6,734.00	\$6,801.46	\$10,098.00
9868 - AudioNideolTelephonics	\$0.00	\$0.00	\$0.00	\$450.00	\$84.23	\$900.00
9870 - Electricity	\$2,380.53	\$2,468.00	\$13,607.50	\$15,743.00	\$15,331.35	\$22,343.00
9872 - Water	\$0.00	\$0.00	\$1,272.65	\$1,450.00	\$1,534.54	\$2,882.00

Glenview Community Church
 Analysis of Revenues & Expenses - Detail Portrait 2011
 August 2011

Accounts	MTD Actual (This Year)	MTD Budget (This Year)	YTD Actual (This Year)	YTD Budget (This Year)	YTD Actual (Last Year)	Annual Budget (This Year)
9874 - N. I. Gas	\$0.00	\$200.00	\$10,853.11	\$10,898.00	\$11,135.58	\$16,598.00
9876 - HVAC Repair & Maintenance	\$0.00	\$2,000.00	\$1,064.00	\$6,365.00	\$11,356.19	\$12,013.00
9878 - Building Repair and Maintenance	\$4,931.78	\$3,000.00	\$12,669.53	\$18,720.00	\$21,326.09	\$25,960.00
9880 - Maintenance Contracts	\$2,074.19	\$250.00	\$27,518.27	\$17,850.00	\$13,055.67	\$24,780.00
9882 - Scavenger	\$218.94	\$400.00	\$2,554.25	\$3,130.00	\$3,140.58	\$4,730.00
9884 - Furn., Fixt., Equip. Purchase	\$158.23	\$0.00	\$733.28	\$6,235.00	\$7,706.68	\$7,000.00
9885 - Non-contract Landscaping	\$0.00	\$0.00	\$4,596.21	\$4,040.00	\$1,299.38	\$4,040.00
Total Church Property	\$22,284.98	\$20,459.00	\$171,857.52	\$181,211.00	\$181,679.02	\$265,840.00
Pageant						
9912 - Pageant	\$0.00	\$0.00	\$642.29	\$645.00	\$362.50	\$1,600.00
Total Pageant	\$0.00	\$0.00	\$642.29	\$645.00	\$362.50	\$1,600.00
Capital Reserve						
9910 - Capital Reserve Expense	\$0.00	\$0.00	\$0.00	\$0.00	\$18,576.00	\$0.00
Total Capital Reserve	\$0.00	\$0.00	\$0.00	\$0.00	\$18,576.00	\$0.00
Total Expenses	\$75,422.77	\$74,531.00	\$680,350.31	\$700,152.00	\$704,013.32	\$1,083,637.00
Net Total	(\$7,170.98)	(\$15,222.00)	(\$6,488.88)	(\$37,130.00)	(\$31,985.28)	\$6,459.00

Accounts

Assets

Current Assets

Cash

1010 - Operating Account	\$80,060.51
1200 - Special Petty Cash Fund	<u>\$1,000.00</u>
Total Cash	\$81,060.51

Investments

1110 - Housing Trust	\$420,768.00
1120 - GSB Money Market Fund	\$240,400.39
1130 - Nursery School Vanguard	\$95,316.27
1140 - Romeiser Trust Account	\$175,850.00
1160 - Endowment Fund	\$135,924.00
1170 - Capital and Reserves Account 1180	\$304,180.61
- Nursery School GSB CD#323510	\$25,823.40
1185 - Hudson and Marjorie Wirth Endowment	\$516,573.34
1190 - Nursery School GSB CD#323512	<u>\$31,428.74</u>

Total Investments

\$1,946,264.75

Prepaid Expenses

\$109.90

Total Current Assets

\$2,027,435.16

Fixed Assets

1770 - Church Land	\$100,126.50
1790 - Church Garage & Contents	\$10,074.00
1800 - Church Building	\$5,430,585.00
1810 - Church Furnishings	\$426,130.00
1815 - Office Equipment	\$91,458.00
1816 - Art & Music Collections	\$50,400.00
1817 - Organ	\$896,000.00
1820 - Canoes	\$1,200.00
1825 - Accumulated Depreciation	<u>(\$742,695.00)</u>

Total Fixed Assets

\$6,263,278.50

Total Assets

\$8,290,713.66

Liabilities, Fund Principal, & Restricted Funds

Liabilities Fixed

Assets

0001 - Represented by Fixed Assets	<u>\$6,263,278.50</u>
------------------------------------	-----------------------

Total Fixed Assets

\$6,263,278.50

Total Liabilities

\$6,263,278.50

Fund Principal

0002 - Beginning Balance-General Fund	\$14,311.77
Excess Cash Received	<u>(\$6,488.88)</u>

Total Fund Principal and Excess Cash Received

\$7,822.89

Restricted Funds

Total Temporarily Restricted Total	\$770,496.93
Permanently Restricted Total	<u>\$1,249,115.34</u>

Restricted Funds

\$2,019,612.27

Total Liabilities, Fund Principal, & Restricted Funds

\$8,290,713.66

**GLENVIEW COMMUNITY CHURCH EXECUTIVE BOARD
MEETING AGENDA
Mayflower Room**

Tuesday, September 27, 2011, 7 PM

- I. Call to Order followed by Opening Reflection
- II. Clergy Comments
- III. Consent Agenda
 - A. August Executive Board Minutes
 - B. September Board Minutes, Clergy Reports
- IV. Treasurer's Report
- V. Committee Reports
 - A. Leadership
 - B. PMRC
 - C. Planning Committee
- VI. Board Reports
 - A. Stewardship
 - B. Finance
 - C. Women's Association
- VII. Selected Pending Matters
 - A. Choir Director Search status
 - B. Church Basement status
 - C. The American Flag
 - D. Senior Minister Search Committee
- VIII. Congregational Comments
- IX. Adjournment & Lord's Prayer

Meeting Reminders:

Planning Committee Mtg.: TBD

Leadership Committee Meeting: October 16, 2011

Executive Board Meeting: October 25, 2011

Operating Committee Meeting: October 25, 2011

PMRC Meeting: TBD

**EXECUTIVE BOARD MINUTES
GLENVIEW COMMUNITY CHURCH
August 27, 2011**

- I. **Call to Order:** Moderator, Bill Dailey, called the meeting to order at 12:50pm at Covenant Village. The clerk recorded the roll silently.

Present: Doug Busby, Pam Keckler, Bill Dailey, Dave Aki, Lloyd Bettis, Rob Hevey, Bob McGee, M-J Detwiler, Laura Heyser, Bob Kappus, Kerry Karth, Steve Brown, Jane Hund, Laura Olson, Steve Sargent, Tom Aldrich, John Demler, Shane Bill, Ann Deakyne, Margaret Ludemann, Doug Morgan, Barry Nelson, Mark Sawires, CJ Sultz, John Tillman, Julie Tillman, Kristine Voelker

Excused: Glenn Davis

Guests: Ed Detwiler, Chris McGuire, Michael McGuire

Bill Dailey gave the opening reflection.

- II. **Clergy Comments:** Doug Busby's and Pam Keckler's complete reports are included in the Executive Board packet dated August 27, 2011.
- Pam commented that the theme this year for the building and office staff is Quality, and that they will also be working to improve efficiency. Pam has started holding regular meetings of the office, maintenance and nursery school staffs. Please send Pam any suggestions dealing with the Broadcaster and contact Tania about any e-blasts. Tania is also working on developing a more interactive web page. Pam asked for boards to help in cleaning out any of their unnecessary materials from rooms and offices in the church. Susan Woodsome has started working full-time in the church office. Pam mentioned that we need some additional volunteers to cover the front desk.
 - Doug also noted how much clutter there was when he was given his first tour of the church, and he would welcome a transitional house cleaning. Doug has been busy interviewing staff and has talked to several congregants who dropped in for visits. Doug will begin visiting home-bound members next week. He commented that we are close to hiring a temporary Adult Choir Director. Michael McGuire is chairing the Search Committee for a full-time Adult Choir Director. This search committee has 3 Music Board representatives and 3 Choir members, and it has already received 21 resumes. Doug commented that he hopes to attend each board's initial meeting in September.

III. **Consent Agenda:**

A. June Executive Board Minutes for 6/28/11

B. July and August Board Minutes, Clergy Reports

There were no requests to remove any item from the Consent Agenda. The Consent Agenda was deemed approved as presented.

- IV. **Treasurer's Report:** Rob Hevey reported that YTD through July revenues are up about \$2,000 and expenses are down about \$21,000 compared to the budget's YTD levels.

V. **Committee Reports:**

A. **Leadership Committee** – Dave Aki commented that the first meeting of the Leadership Committee is September 18, and all boards need to appoint vice chairs. If there is no vice chair, the chair must attend the Leadership meeting. Dave mentioned that we would like to get the Technology Committee and the Communications Committee re-activated this year. John Demler volunteered the Finance Board to shepherd the re-activation of the Technology Committee. There was also discussion about whether we need additional human resource expertise, whether as a separate committee or as an addition to PMRC. A motion was made, seconded and approved to have Rachel Owen added as a 2012 member of the Confirmation & Youth Board.

VI. Board Reports

- A. Stewardship:** John Tillman asked us all to think of new ways to connect with people to help our church to grow. Rally Day, September 11, is also the launch day for this year's stewardship campaign. John requested that the Executive Board lead the way by committing to pledge by 9/11. He also asked that each board member send some emails or give calls to friends and neighbors to come to GCC.
- B. Music:** Michael McGuire presented a proposal from the Music Board for a project to make a recording to honor the 60th anniversary of the Pageant. A motion was made, seconded and unanimously approved to allow the use of \$6,000 to be taken from the Pageant Fund and the Sally Clonts Fund for the recording of the Pageant narration and music, with the proceeds from the sales of the recording first going to pay back the two funds with any remaining proceeds then being split 50/50 between the Pageant and Music Board funds.
- C. Fellowship:** The Fellowship Board will soon be sending out the dates for each board to cover a coffee hour.
- D. Services & Sacraments:** Communion at the 8:00 service will be by intinction, and communion at the 10:00 service will be by passing the elements in the pews.
- E. Missions Outreach:** Please donate any school supplies for the Rally Day project. Kristine Voelker requested that a Missions email address be set up on gccucc.org, and Pam Keckler will see that this is done.
- F. Women's Association:** The Executive Board approved Chapter 9's request to sell calendars on 10/23 and 11/6.
- G. TOPPS/Children's:** After the service on 8/28, there will be lemonade and a fresh produce tasting at the Rainbow Garden.

VII. Selected Pending Matters

- A. New Adult Choir Director:** The Search Committee will meet on 9/20 to review all applications received by 9/15. The plan is that the committee will winnow the field to 5-6 candidates for further interviews and reference checks, then narrow this to 3 finalists who will each conduct the choir, which will provide feedback on each candidate. In addition, the candidates will be interviewed by the music staff and the ministers. The Search Committee will make their final decision in time for the new full-time Adult Choir Director to start at the first of next year.
- B. Church Basement Status:** The Executive Board reviewed Jennifer Helgren's report concerning the July 23 flood damage and repairs. There was about \$31,000 worth of damage, excluding the Mayflower Room floor, and all expenses will be covered by insurance after our \$2,500 deductible. There are 2 ripples in the Mayflower Room floor, and it is still being reviewed on how best to take care of the floor. We should still be able to use the Mayflower Room on Rally Day.
- C. Leadership Retreat Funding:** A motion was made, seconded and approved to fund the costs of the Leadership Retreat from the Leadership Fund.
- D. Howard Roberts' House:** Bill Dailey reported that there is not yet a buyer for the Roberts' house, but it has been rented for now given the current state of the housing market. An amendment to the Land Trust will be pursued.

VIII. Congregational Comments: There were no comments.

IX. Adjournment: The meeting was adjourned at 2:20 pm with the saying of the Lord's Prayer.

Respectfully submitted,
Bob McGee - Church Clerk

<p style="text-align: center;">Planning Committee Meetings – TBD Leadership Committee Meeting – September 18 Executive Board Meeting – September 27 Operating Committee Meeting – October 25 PMRC Meeting: TBD</p>

GLENVIEW COMMUNITY CHURCH
FINANCE BOARD MINUTES

September 19, 2011

BOARD MEMBERS

Present: John Demler-Chair, Dick Gottfred, Cricket Kelly, Brian Koloms, Marlene Baddeloo, Bill Hinkle, Chris Clark, Mark Lefens, Rob Hevey-Treasurer, Dale Wittenberg-GCC Business Administrator
Excused: Tom Riedy
Guests: None

SUMMARY OF MEETING

Meeting opened at 7:00 PM with a devotional reading by Chris Clark

Treasurers Report (Rob Hevey):

Rob Hevey noted that we are on budget with both actual expenses and revenues tracking very well to plan. The June treasurer's report was approved unanimously. We discussed that the 2012 budgeting process should review potential reallocation of various maintenance expenses to Maintenance Contracts (Act. 9880) as Jennifer is increasing the use of contract agreements to reduce the cost of ad hoc repairs. Dale Wittenberg mentioned that 2012 Pledges are starting to roll in with 50 – 60 received to date.

Executive Board News (John Demler):

It was established that a Technology Committee is already part of the Constitution. The committee includes a representative from Properties board and a representative from Finance Board. The Executive Board authorized a committee to initiate recruiting efforts for a new Choir Director.

Committee Reports

Insurance (Bill Hinkle):

Quotes have been received for 2012 insurance premiums. Bill Hinkle will meet with Dale Wittenberg to review the quotes and determine if any options exist to reduce rates. Initial review indicates that the 2012 quotes for Property Liability and Workers Compensation have increased from 2011, but the net change has not been calculated to address charge backs to the Nursery School and Resale Shop. The renewal date for existing policies is 10/1/11.

Investments (Cricket Kelly & Dick Gottfred):

Cricket Kelly reviewed the Investment Account Checks & Balances report. Cricket noted the need to review documentation procedures for quarterly income distribution for the Housing Fund and Endowment Funds.

Dick Gottfred reviewed the performance of respective investment funds:

- GCC Endowment Fund returns are slightly below benchmarks due to relatively low Government Bond Content.
- GCC Housing Funding is performing in line with benchmarks
- Wirth Fund in performing in line with benchmarks. Discussed the benefit of further fund diversification into Value Funds. A motion to move the balance of Wirth Endowment funds in to River Road and Cullen High Diversity Value Funds was unanimously approved.

- The Capital Reserves and Romeiser funds have some investments reaching maturity which will increase respective cash accounts. Dick Gottfred will review associated investment options.

Cricket Kelly provided an update on the Roberts Housing Trust. At the present time GCC retains an 18.3% equity position in the property. Cricket, John Demler, Bill Dailey, and Karen Patterson, an attorney are still working on all the details of the Roberts' sale. Bill Dailey has requested information from the Roberts on the status of the house, and has received an update. This group will continue to monitor the situation while the house is on the market.

Nursery School (John Demler): No recent activity was reported. John Demler mentioned the need to review our charges to the Nursery School. These discussions should be held prior to year end as the Nursery School will set their annual rates in the fourth quarter and we need to get ahead of their schedule.

Budget/Stewardship (Brian Koloms): Chris Clark, John Demler and Brian Koloms met to review the budget development schedule. Meetings will be held with respective boards in the October timeframe to gain input on the 2012 budget requirements.

Leadership (Marlene Baddeloo): No activity to report.

Audit (Marlene Baddeloo): No activity to report.

PMRC (John Demler): John Demler will support this committee and will provide salary bucket information to the Budget subcommittee.

New Business: None

Old Business:

- The need to respond with 2012 Pledges in a timely manner was emphasized.
- Everyone needs to double check the Trustee of the Day assignments and recruit a replacement if you are not available. Collections from the 8:00 service will be put in the bank envelope by the ushers. Trustee of the Day is required to make a bank run only after the 10:00 service.
- Finance Board will serve coffee after the 10:00 service on 10/2/11. Demler, Gottfred and Koloms will support the effort.

The meeting was concluded with the Lord's Prayer and adjourned at 8:20 PM

Next Meeting: October 17, 2011. Prayer and Minutes to be provided by Dick Gottfred.

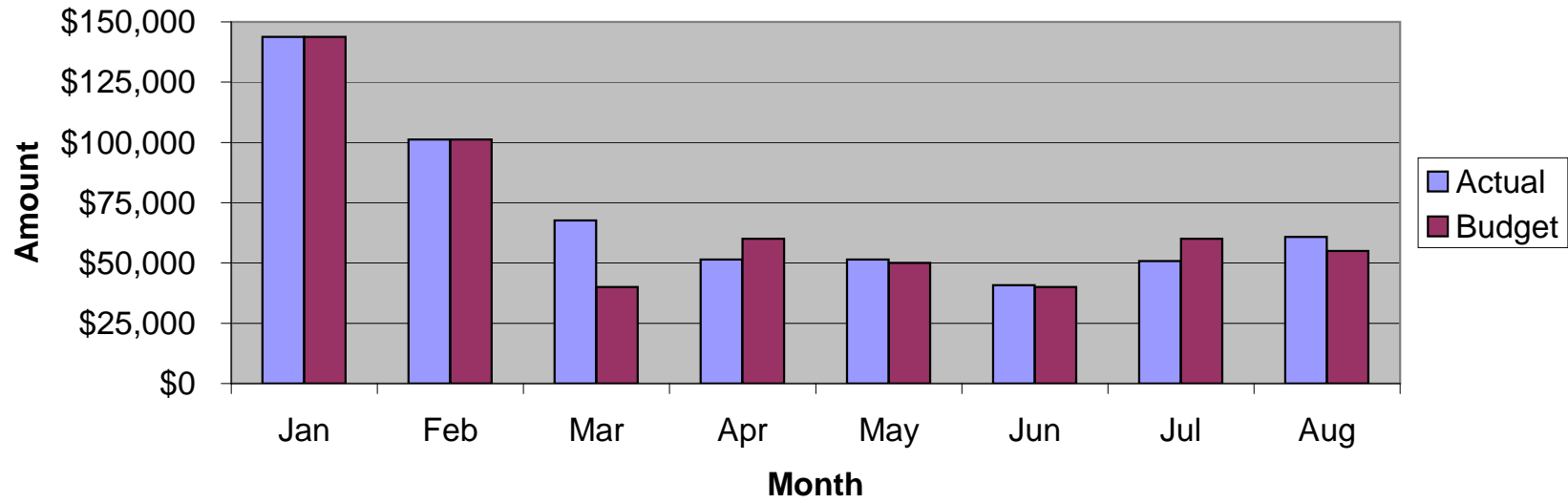
Minutes submitted by Chris Clark

**Glenview Community Church
YTD Revenue Expense Summary**

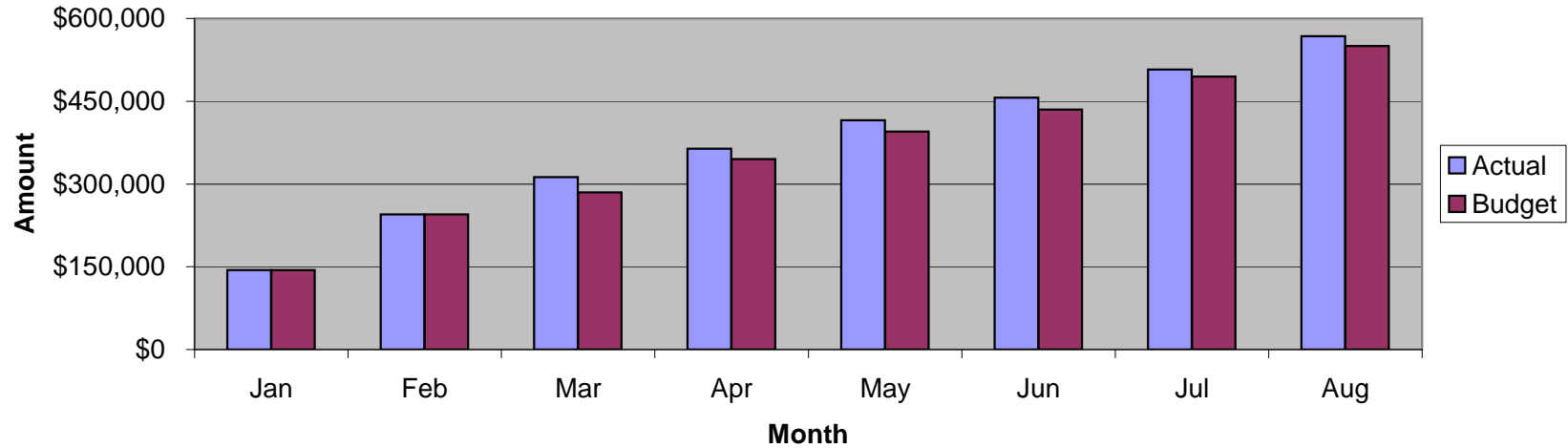
	Aug-11	YTD	YTD	YTD
	Actual	Actual	Budget	Over/(Under) Budget
Revenues				
Current Pledge Contrib	60,809	568,020	550,013	18,007
Non-Pledge Contrib	1,115	30,758	34,710	(3,952)
Pledge Overage	4,491	7,531	4,855	2,676
Prior Year Pledges	-	8,190	10,000	(1,810)
Loose Offerings	284	4,474	4,310	164
Women's Assoc	-	12,500	10,000	2,500
Fees & Nursery School	50	23,871	23,766	105
Interest	92	4,558	63	4,495
Housing Trust	720	720	1,000	(280)
Endowment I	-	909	2,000	(1,091)
Endowment II	-	3,053	4,250	(1,197)
Mission Offering	-	8,586	10,055	(1,469)
Special Events Income	692	692	8,000	(7,308)
Total Revenues	68,252	673,861	663,022	10,839
Expenses				
Pastoral	15,161	170,813	176,835	(6,022)
Missions	7,306	67,224	68,693	(1,469)
Children's Ministry	2,196	22,034	23,390	(1,356)
Confirmation & Youth	170	20,120	21,666	(1,546)
Pastoral Care	4,520	36,677	36,760	(83)
Membership	80	518	800	(282)
Adult Education	-	200	600	(400)
Services & Sacraments	19	62	299	(237)
Fellowship	-	98	450	(352)
Music	7,756	68,343	68,091	252
Stewardship	-	(16)	2,020	(2,036)
General & Administrative	15,930	121,778	118,692	3,086
Church Property	22,285	171,858	181,211	(9,353)
Pageant	-	642	645	(3)
Capital Reserve	-	-	-	-
Total Expenses	75,423	680,350	700,152	(19,802)
Net	(7,171)	(6,489)	(37,130)	30,641
General Fund	7,823			
Capital Reserve	240,348			

Notes
General Note: Most revenue accounts and certain expenses have been seasonally adjusted.

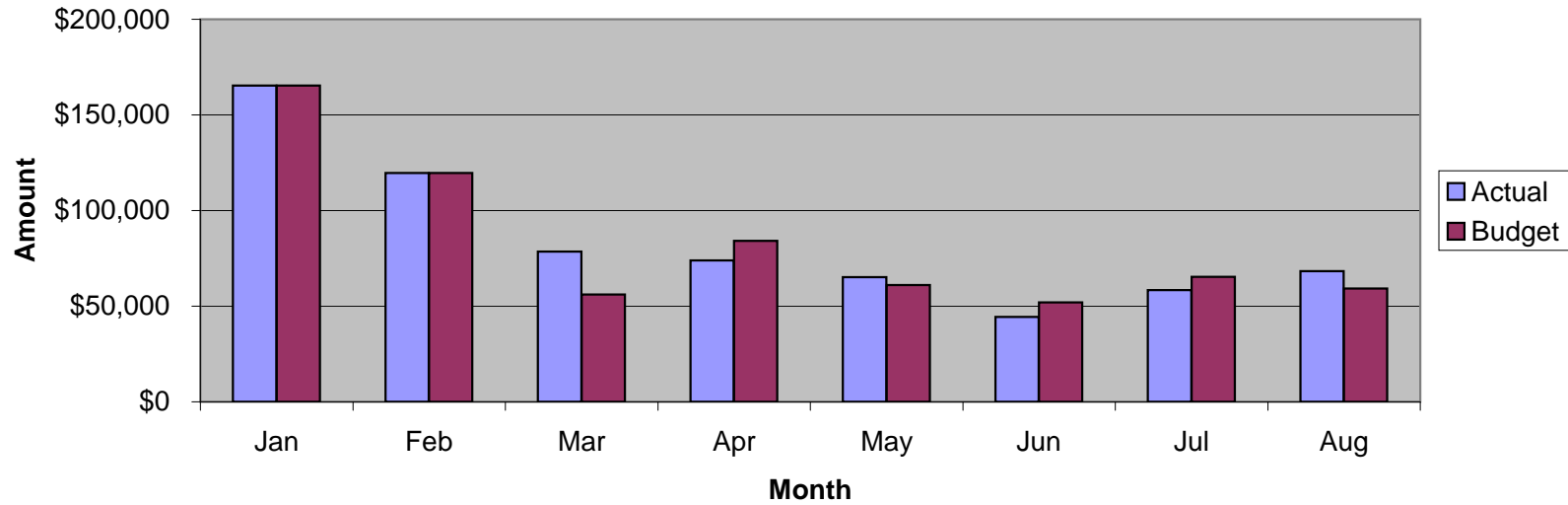
Monthly Pledges - Actual vs. Budget



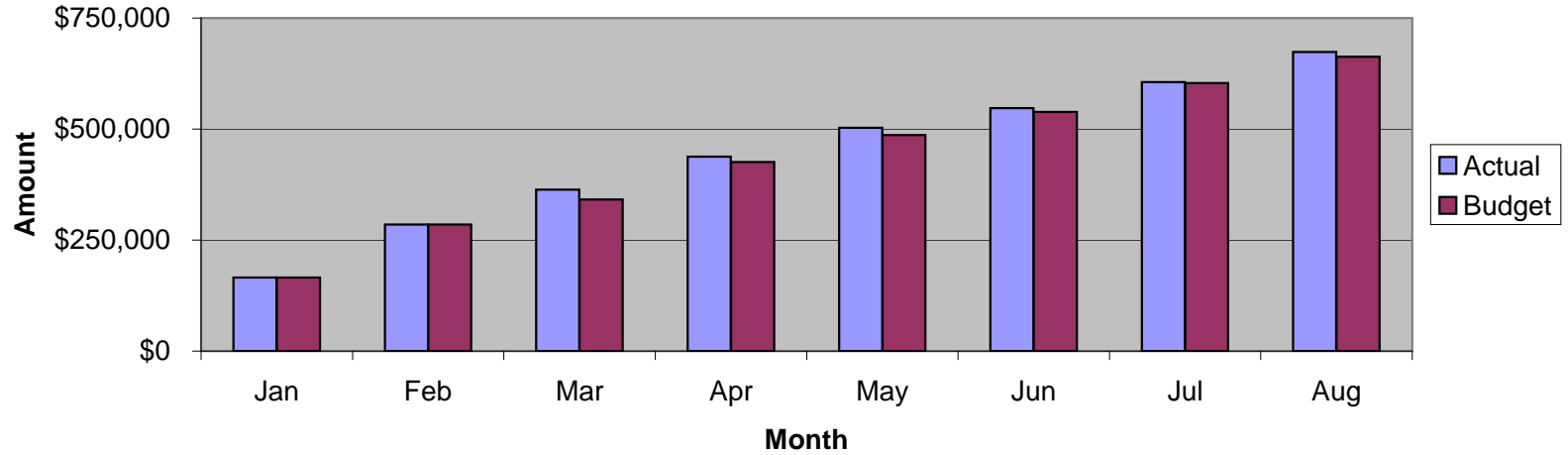
YTD Pledges - Actual vs. Budget



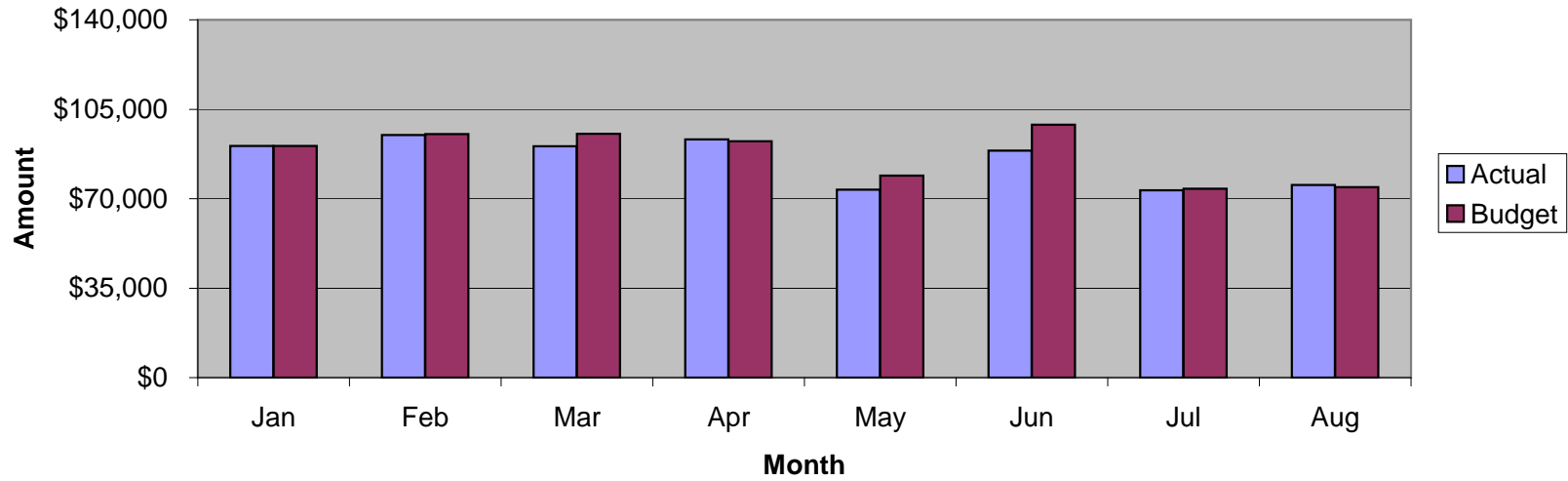
Monthly Revenue - Actual vs. Budget



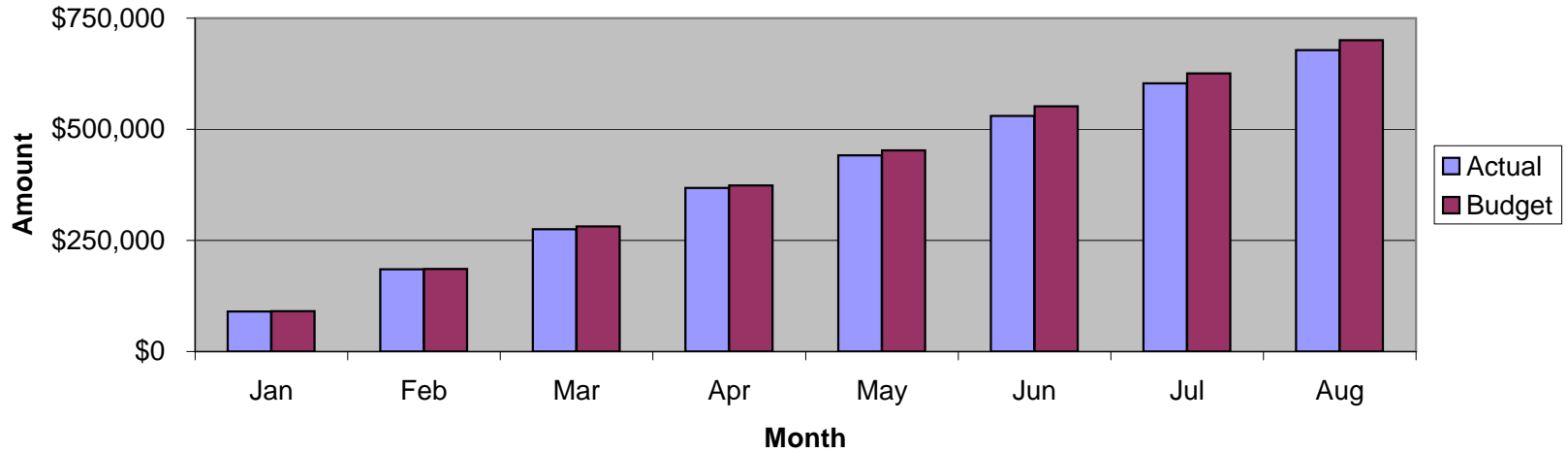
YTD Revenue - Actual vs. Budget

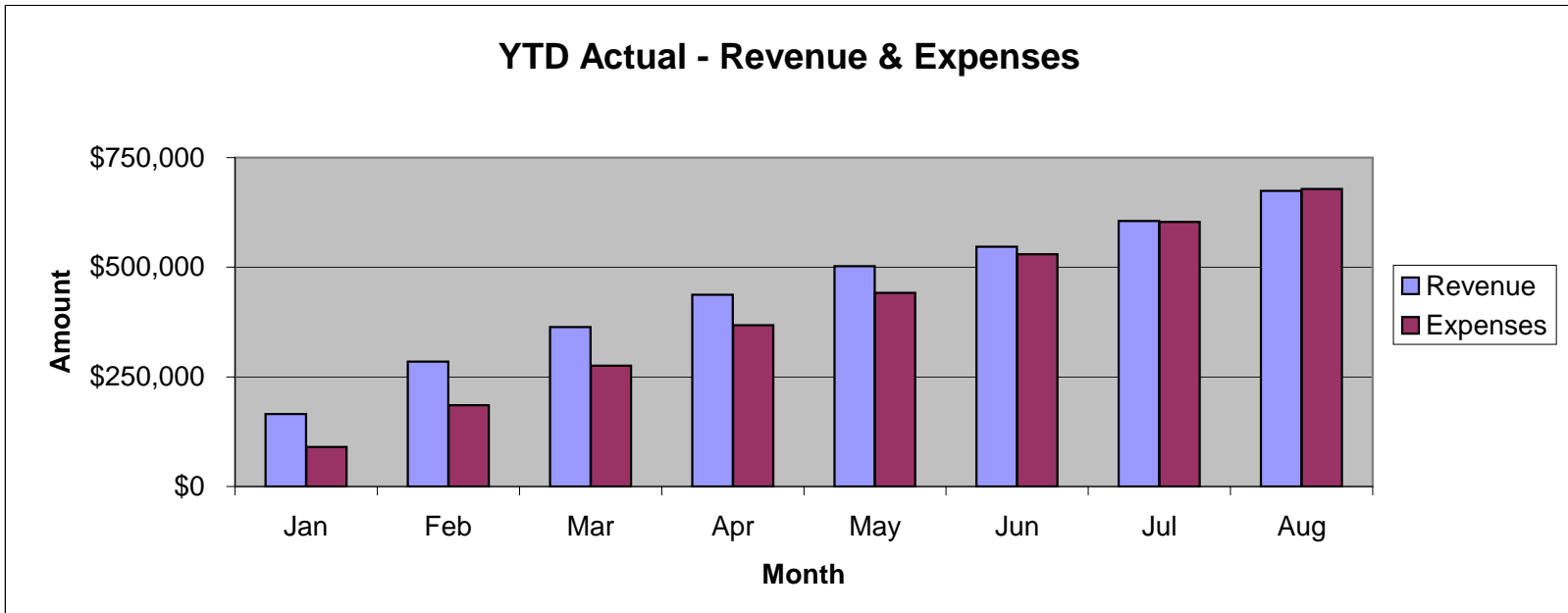
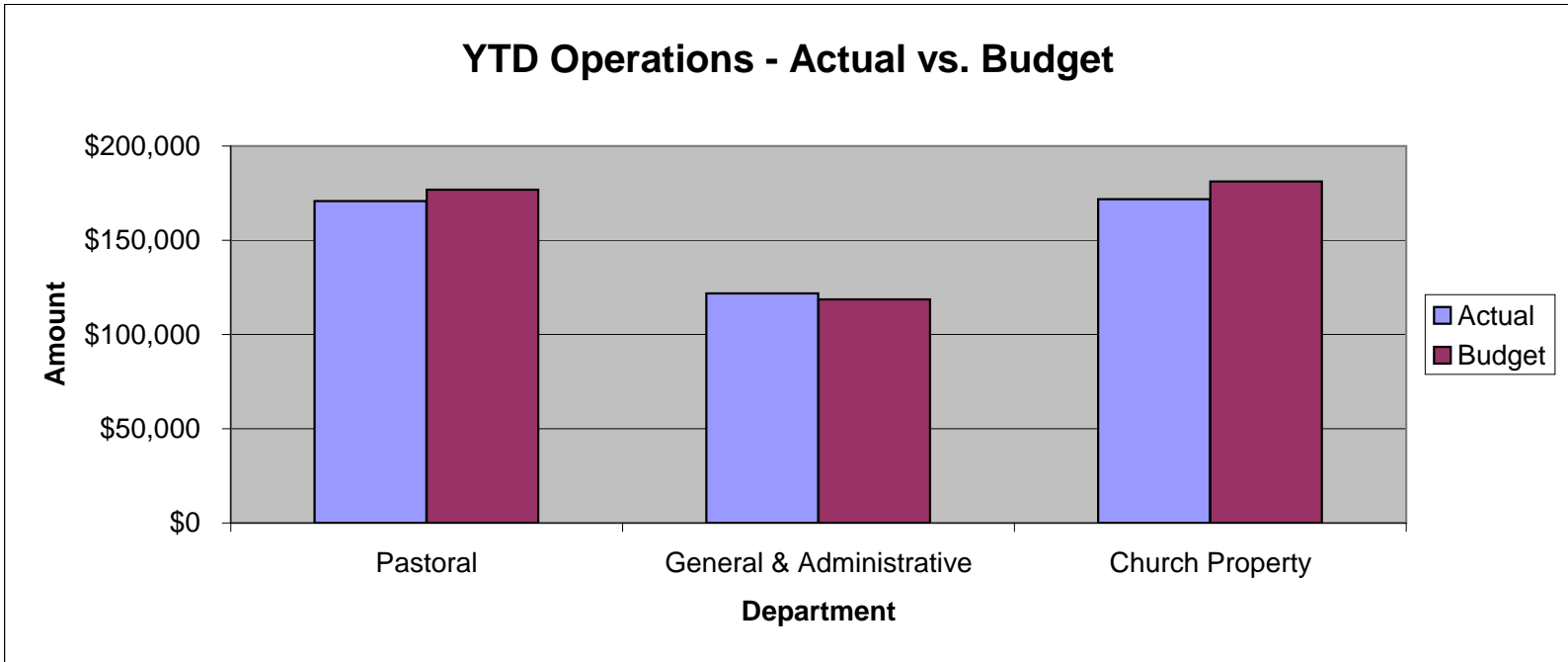


Monthly Expenses - Actual vs. Budget

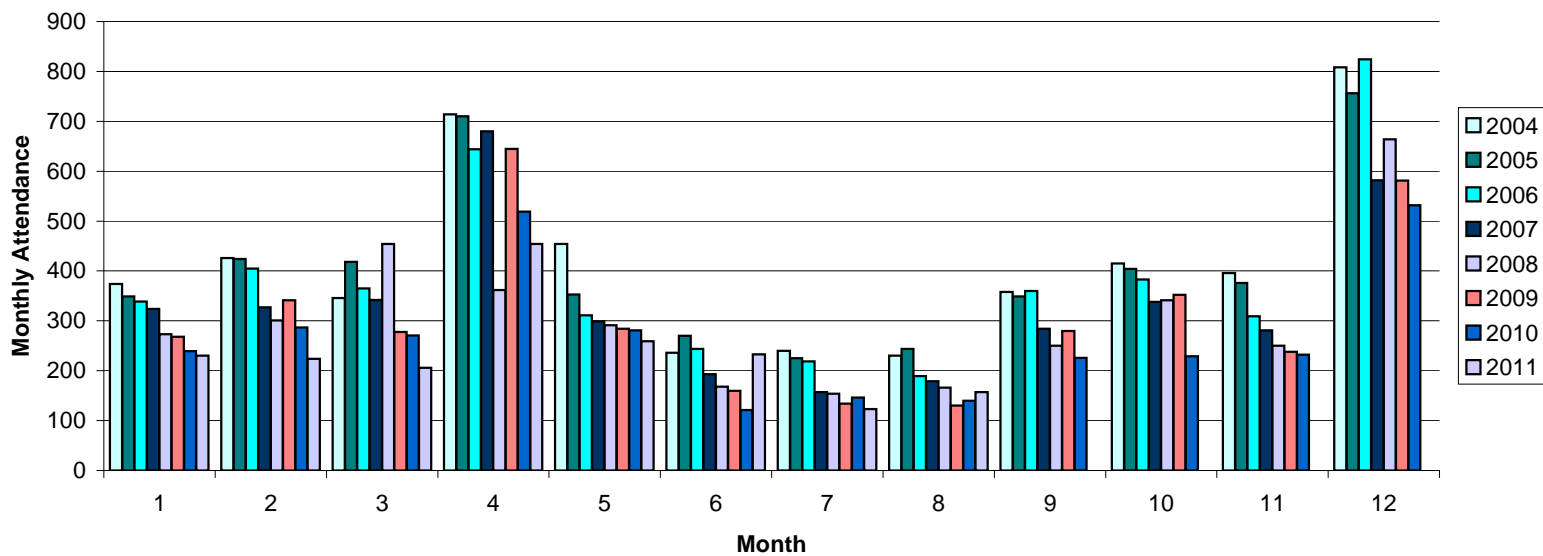


YTD Expenses - Actual vs. Budget

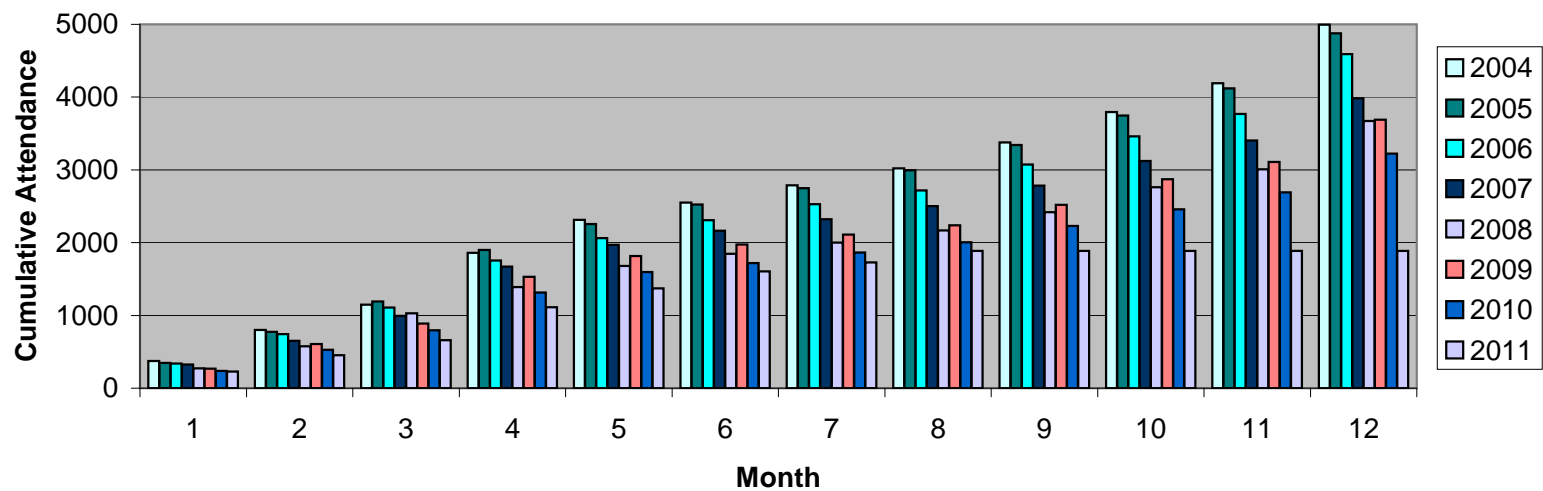




Sunday Average Attendance - Monthly



Sunday Average Attendance - Cumulative



Glenview Community Church Groundrules and Behavioral Covenant

As caring members of GCC, we accept and agree to abide by the groundrules stated below. Further, we commit to holding each other accountable for behaving in accordance with these groundrules during all our meetings or interactions. We believe that individually, we should endeavor to follow the Golden Rule to " ... Do unto others as you would have others do unto you ... "

I Will:

Focus on issues.

Listen carefully, respectfully consider alternative points of view and stay open to influence and inquiry.

Speak calmly and respectfully in presenting my views or responding to questions.

Think for the benefit of GCC and help the group achieve its objectives through inclusive solutions.

Focus on the future of GCC while respecting our rich history as a church.

Apologize if my words or thoughts were hurtful or perceived as disrespectful.

Speak up if I believe these ground rules are not being followed.

Behave in a manner consistent with the role model that I am to others in the church.

I Will NOT:

Make the issues personal.

Interrupt others or fail to recognize the contributions of others.

Respond angrily to other's comments or fail to seek to understand the other person's perspective first.

Focus on my interests only or think/speak in divisive terms .

Be resistant to new ideas for GCC.

Disregard how others receive my comments.

Ignore behavior I believe is inappropriate.

Speak negatively of others when they are not present or present issues for group discussion in order to punish or embarrass others.

Dio explained that people want to have the blue name tags rather than the paper ones but most people are also concerned about losing them. There is still a concern about having a place in the church to store them. Dio will see if the manufacturer of the blue name tags has suggestion on storage.

DeAnne announced that the new GCC church directories are available in the office.

In discussions about the new member orientation meetings it was decided that Doug M. would meet with Doug B. to discuss how it might work this year and let Doug B. know the names of the two people from the membership board that have expressed interest in helping out.

There will be no meeting in September but after that, except for Dec and April, because of Christmas and Easter, we will meet the second Sunday of each month in the parlor after the second service.

Lord's Prayer

all

Next meeting will be Oct. 9, 2011.

**GCC Mission Outreach Board
Sept. 12, 2011 Meeting Minutes**

Present: Chair Kristine Voelker; Cindy Bond; George Silca; Kathie Wilson; Tania McCarthy
Excused: Karen O'Brien; Nan Conserv; Tom Lutz; Christine Foley

GCC Outreach - Already on the Calendar

a. School Supply Collection

Kristine thanked Karen and Tania for putting together Back to School Kits on Rally Day with children and others which will be forwarded to UCC Disaster Relief.

b. Mission Moments

Kristine went over the Mission Moments scheduled for the 2011-12 year and asked for volunteers for the necessary Mission Moment Sundays and for that volunteer to then be the MOB contact with that charity for purposes of keeping everyone informed. Volunteers for the Mission Moments are set forth as follows: October 16 - ARISE - Tania McCarthy; December 18 - Journey from PADs to Hope - Tania McCarthy; January 15 - Interfaith House - George Silca; February 19 - San Lucas Church - Cindy Bond; June 17 - Wesley Child Care - Cindy Bond.

c. Coffee Hour:

George, Cindy and Tania agreed to represent MOB during the 11/20/11 Coffee Hour.

d. Monthly Food Collection - First Sunday of Each Month

Kristine advised the MOB that Tracy Sawires going to continue to handle the monthly food collection. Thank you Tracy!

e. Northfield Crop Walk

Kristine indicated that she had not received the Crop Walk packet but expected to do so within the next few days. MOB agreed that, given the time and place of the Crop Walk, it would be difficult to rally a large group. Kristine indicated that she would call the GCC Walkers contact when the packet came it to see if they might be interested in walking.

f. A Just Harvest

George suggested that MOB participate in serving the homeless at A Just Harvest as a group activity. The MOB agreed to do so on December 12, 2011, provided that S. Franz had openings. Kristine stated she would contact Sandy Franz to confirm that that date was still available.

g. Community Renewal Society

Kristine reminded everyone that the CRS annual meeting was October 1, 2011.

External GCC Outreach to Our Community, Our World

The MOB then discussed what and how many other projects MOB might be interested in doing for the upcoming months. The MOB agreed that cleaning/furnishing an apartment for a family through Refugee One should definitely be on the agenda. Cindy indicated that she could be the MOB liaison with the confirmands on the project. In addition, the MOB agreed that GCC should become involved in helping/educating GCC about Sunset Village and the myriad of problems those residents fact. The possibility of providing water or paying for water for Sunset Village residents was discussed. It was agreed that logistics would have to be looked into further before any decision was made. Finally, per George's suggestion, the MOB agreed that an organized trip to the Greater Chicago Food Depository would be worthwhile. Kristine stated that she would call for available dates.

Other Business:

Tania indicated that she had arranged to have a GCC email address for the MOB so that grant requests could be sent directly to the church. The MOB also agreed that a new MOB bulletin board in the West Entrance would be great help in keeping congregants informed of current collections, projects, and volunteer opportunities. Cindy volunteered to design/create a mockup. Kristine would look into how MOB goes about getting permission to put up the board. Kristine also would look into having MOB participate in new member orientations.

Close

The meeting closed with the Lord's Prayer. The next MOB meeting is scheduled to be held on October 10, 2011 7:30 p.m. in the Parlor.

Executive Board Report
Rev. Dr. Pam Keckler

September 2011

We are now into our fall schedule and everything is full speed ahead!

It is great to see and feel the enthusiasm and renewed energy that a new program year always brings. I'm very excited about our new confirmation class of 7th graders. We have 42 confirmands of four classes and five teachers. Our 8th grade class has 21 who returned and 2 teachers. Just think, our confirmation class totals equal some of our UCC churches membership. We have a lot to be grateful for this year.

I've been making phone calls to various members who come to mind or from others that I've not seen in a while. This year I also called several 7th grade parents (from the Sunday School list) who I did not know personally and invited them to join confirmation class and attend worship! All but one has joined! I ask parents to be accountable and to participate in worship and in the life of the church if they are asking their child to do the same. I think this is improving.

It continues to be a joy to work together with Dr. Doug and I mean that literally. We both have our own responsibilities but we've been planning together, making tough decisions as a pastoral team and continuing to listen.

September 11 service was very moving for many of us and I want to publicly thank all those who shared in leadership of that difficult time of remembering, as well as the amazing music that was shared with us by music staff, chancel choir, instrumentalists, guest instrumentalists, bell choir and children's choir. Thank you one and all.

We continue to work on various parts of the building, especially finishing and cleaning all of the lower level rooms. There is improvement in the nursery and toddler room as well. Our office staff continues to work diligently to try to improve things we already have in place as well as receive other fall requests. PYF is doing very well. So I am pleased at our work toward excellence. It is gradual but it will happen.

This past month I:

- Assisted with community worship four times and preached once.
- Officiated at three baptisms of member families
- Visited along with Doug and Marilyn our GCC residents at the Vi (The Glen)
- Presided over two memorial services of members: Edith Nelson and Ruth Milner

Reflections "Flocking Birds"

I have seen ostriches standing gray and brown
with their long necks turned in one direction and
flamingos gather silently to stand suspended on spindled legs.
I saw three vultures gathered once on a fence in Texas –
in mutual agreement about an upcoming delicacy.
Pelicans love to fly in wave-skimming V formations...

I read somewhere that a child once said,
“Uh-oh, Mommy. God’s birds got out!”

I sat late on my balcony and watched high in the sky
five hawks slowly circling, caressing the breeze.

And the thought occurred to me –
like flocking birds – we all need community.
From the Book “Grow Something Besides Old”

I Corinthians 12:12, 27

For just as the body is one and has many members, and all the members of the body,
though many, are one body, so it is with Christ. Now you are the body of Christ and
individual members of it.”

May we continue to celebrate our community,
--heal our community
--grow our community,
as member of this community...who need each other.

Pam

GLENVIEW COMMUNITY CHURCH BOARD MINUTES

E-Mail to – gccucc@gccucc.org

DUE: 9:00 a.m. Wednesday before the next Executive Board Meeting

NAME OF BOARD: Pastoral Care Board

MEETING DATE/TIME/PLACE: September 13, 2011, 7:00 p.m. GCC, Parlor

MEMBERS PRESENT: Sally Hicks, Karen Aeschlimann, Mary Ellen Johnson, Toni Cucco, Ann Deakyne, Marion Alexanian, Carolyn Keller, Betsy Martin, Kathy Riddel, Ann Grant, Ann Deakyne, Ruth Schultz

MEMBERS EXCUSED: Barb Pollak, Marilyn Belleau, and Sylvia Studt

MEMBERS ABSENT: None

DEVOTIONS: Ann Deakyne offered a devotion of gratitude for our gifts.

SUMMARY OF MEETING:

Minutes of the June 15th Meeting: the minutes were approved. .

Sharing concerns:

If we hear of individuals with pastoral care needs; contact Marilyn or Pam.
Barb Pollak is recovering from surgery.
Ann will not be able to lead October meeting due to surgery for her granddaughter.

Old/New Business:

Handouts: Ann provided up-to-date copies of roster; calendar of events; meeting agenda; June minutes.

Sixty + Luncheons: Sign-up sheet passed for September 20 luncheon: Toni, Sally, Mary Ellen, and Karen will help out. Board needs to come up with ideas for luncheon programs and the committee lead will do advertizing. One idea was Solid Rock Carpenters. Please give Toni your ideas as they come to you. Toni also asked for assistance in putting together luncheon flyers.

Committee Leads/Assignments: Following changes were made:

Altar flower delivery - Ann Grant – co-chair with Betsy Martin
Labyrinth – Toni Cucco – co-chair with Ann Deakyne
Blood Drive – Kathy Riddle – co-chair with Sally Hicks
Flu Shots – Ruth Shultz – co-chair with Sally Hicks
Memorial Receptions – Marion Alexanian – co-chair with Carolyn Keller
Sr. Housing Fair – Marion Alexanian – co-chair with Sally Hicks and Mary Ellen Johnson
60+ Luncheon – Mary Ellen Johnson – co-chair with Toni Cucco; Ruth Shultz to help, when possible
Poinsettias – Betsy Martin – many will help – **We need to set up 23rd rather than 17th.**
Easter Lilies – Mary Ellen Johnson co-chair with Sally Hicks
Privileged Visitors – Barb Pollak
We Care Committee – Toni Cucco

Blood Drive: Nov. 13 – Sally will pass around a sign-up at the October meeting. Sally will be there early.

Flu Shots: Oct. 8; Ann passed around a sign-up sheet. Contact Ann to see who signed up to help.

Altar Flower Delivery:

Betsy to send out most recent delivery schedule to all board members and to Susan Woodsome in the office. Karen will trade with Barb Pollak for September 25. Betsy to call Barb and let her know.

Memorial Service Reception: Carolyn Keller indicated funeral for Ruth Milner will be at 2 pm on Thursday, September 15. She needs 2 for set-up assistance prior to the funeral and 2 for serving clean-up after the funeral. Ruth's chapter is baking cookies. Mary Lou will help because she is in Ruth's chapter. Ann Deakyne and Marion agreed to help Carolyn setup and Betsy and Kathy signed up along w/Carolyn and Mary Lou to help serve and cleanup. It will be in the parlor.

Candidates for PCB vice chair position: Ann asked Board members to consider becoming vice chair for this year. A joint vice-chairmanship can be considered and works well. Please contact Ann Deakyne if you are interested.

Pastoral Care Board Sunday Service dates: December 11 and March 25, after the 10 am service. Sally will pass around a sign-up for December at the October Meeting.

All Church Memorial Service: Betsy will pass around sign-ups in October meeting.

Report of the Parish Nurse: Marilyn was ill so there was no report.

Executive Board Report:

1. Ann discussed the new Sunday schedule of services and other activities. Per Pam, we can pick up altar flowers after 10 am service on Sundays when there is a 4 pm service. They don't need flowers for that service.

2. The Leadership Retreat was a great success. Per Doug Busby a celebration is being planned of the church's past as a prelude to visioning for the future.

3. Doug Busby stopped by and gave information about upcoming adult ed seminars he will lead on spiritual healing and life after death as well as some of his past experiences with healing touch.

Following the Lord's Prayer, the meeting was adjourned.

Next Board Meeting is scheduled for Tuesday, October 11, 2011; time 7 pm, parlor.

Devotions: Carolyn Keller

Minutes submitted on September 21, 2011 by Betsy Martin

Transitional Senior Minister's Report

Executive Board
September 27, 2011

My second month as GCC's transitional senior minister has been highlighted by the initiation of two tasks that were listed in the March 20, 2011 GCC profile for the transitional minister. One task is based on the generally held view that during the transitional period, a church should come to terms with its history if for any other reasons than to assist it in forever putting away contentious issues and in focusing on a future that builds upon its successes of the past. Allan Ruter has developed a plan for assembling, organizing and cataloguing all materials related to the history of GCC found in several storage areas of the church (Phase One) and subsequently to be requested from its members (Phase Two), and will be joined in this effort by Bev Dawson and hopefully many other volunteers. Phase One will end with a celebratory GCC History Sunday, possibly in April 2012, when some of the archived materials will be displayed, hymns written by members of the congregation will be sung during worship, stories of our past will be recorded for the archives, and a community meal might be shared. The other task, strengthening our church membership, also stood out as an initiative during the brainstorming session at the Leadership Retreat. At its recent meeting the Planning Committee determined that the key elements of this initiative should be: a membership management system to be used especially for follow up with first-time visitors from the Glenview area and to identify and contact members whom we haven't seen for a while; defined member recruitment, retrieval and retention programs; and publicity materials and communications modalities to support these programs. Committees have been formed for planning these elements of the membership initiative.

The Associate Minister and I have had weekly meetings with Director of Health Ministry, to be informed of those who need pastoral care. On September 7th I spoke to our "Called to Care" group on my experiences with and ideas for visiting people. On September 13th the three of us visited with our congregants who reside at the Vi, and today I had lunch with our congregants who reside at Covenant Village. To date this month I have visited six shut-in congregants at three retirement facilities.

This month I have been able to attend meetings of the following Boards, albeit with some for short periods due to concurrently held meetings: Children's, Adult Education, Pastoral Care, Stewardship, Services and Sacraments, and Music. I also attended meetings of the Planning Committee, the Board of Hands of Peace and the Glenview Clergy. I had numerous ad hoc meetings with the Associate Pastor and the Director of Music, together and individually, and weekly meetings with Elizabeth Ciccolini as mentor of her 400 hours of field experience as a seminarian at the Chicago Theological Seminary. I was honored to give the invocation at the 60+ luncheon, and to give the lectures on two consecutive Sundays in our Adult Education program.

Finally, I'm pleased to report that the 8:00 a.m. service, "A Time for Spiritual Reflection," has been well received. Its attendees have had adequate time to get to Adult Education lectures and Adult Choir practice.

Yours in Christ

Doug
Rev. Dr. Douglas E. Busby

**GLENVIEW COMMUNITY CHURCH BOARD MINUTES
SERVICES & SACRAMENTS**

MEETING DATE/TIME/PLACE: Tuesday September 13, 2011 at 7:00 p.m. in Room 201

MEMBERS PRESENT: Cathy Ach, Denny Jorgensen, Mij Kritzman, Mary Anne Peruchini, Valerie Rosenberg, John Roth, Julie Sanders, Dale Sands
Julie Tillman, Jeff Wagner

MEMBERS EXCUSED: Aaron Ach, Colleen MacKimm, Carlton Olson

MEMBERS ABSENT:

Opening Prayer

Minutes for the June 12th meeting were reviewed and approved

- **Report from Minister, Pam Keckler**
 - Pam Keckler brought Kathy Lifton with her to talk about our next communion which will be World Communion on October 2nd. She discussed involving children in communion on Family Communion days.
 - Service and Sacraments will start this effort after the first of the year.
 - Since children will be included in receiving communion on 10/2, our bread count needs to be 160 people higher.

- **Report from Senior Transitional Minister, Doug Busby**
 - Doug Busby reported that 16 people attended the first 8am meditation service (on 9/11), 397 attended the 10am and 8 for the first 4pm service. He is hopeful the numbers will grow for the two new service times.
 - For communion 10/2, Doug Busby has asked that our board move a small table (from the Parlor and set a white napkin on top of it) to the transept area next to the lecturn to be used for the bread and juice. One challis (which the juice is put into) will be needed to service communion and bread for 30 people should be prepared. It was determined that if the usher assigned to the 8am service was willing to assist serving communion, that no additional people would be required to help at this time. If the number of attendees grows, we will have to review whether any volunteers are needed for this communion service.

- **Executive Board Report**
 - Julie Tillman reported that through June 2011, we were slightly ahead of budget which is significant since summer months can often be tight.
 - Susan Woodsome has replaced Jane Payne as the Administrative Assistant.
 - Tania McCarthy will send out eblasts on a weekly basis and we should plan on 1-1/2 – 2 leadtime to get a message out. Also, she is offering to

GLENVIEW COMMUNITY CHURCH BOARD MINUTES SERVICES & SACRAMENTS

put information about boards on the GCC website if we would like to do so.

- Jim Winsfield is the temporary Choir Director while the committee reviews applicants for the new permanent Choir Director. The committee is hopeful to fill the position so that the new director would be in place by the first of the year.

- **Lector Report**

- Julie Tillman reported that Colleen MacKimm is currently working on identifying lectors for September 18 through November.
- During the discussion regarding Family Communion, a suggestion was made to include 7th or 8th graders (confirmands) as possible lectors.

- **Usher Report**

- John Roth discussed how he is working to create a team of people who would prefer to usher for the early 8am service. He will be meeting with all the ushers after the 10am service on 10/18.
- For the 10/2 8am service, John Roth will confirm that the usher assigned for that service will help serve communion.

- **Next Communion Service**

- The next communion will be 10/2 which is World Communion Sunday. The 8am service will be served by intinction and the 10 am service will be served by trays. No servers are required for the 8am service assuming the usher will assist Doug Busby. Bread for 30 needs to be prepared as well as one whole piece of bread; 1 challis full of juice.
- The 10am service will require 10 communion servers. Given the uncertainty of numbers of people who will attend the service and with the addition of all the children, we think 5 packages of pita bread (the flat kind, Knonos brand available at Jewel) may be needed. Children's Board will set up various breads in a display on the altar for the World Communion. Eleven trays of juice and eleven plates of bread should be prepared as well as the challis (large goblet for juice) and one whole piece of bread.
- Valerie Rosenberg, Mij Kristzman, Dale Sands and Julie Tillman have volunteered to prep the juice and will meet at 9am on 10/1 to learn how to complete this task. Dale Sands has offered to bring pita bread so that bread can be cut and staged on the 1st for the 8am service on the 2nd. Bread will be bagged to keep the bread fresh. Julie Tillman will make sure that Doug Busby is ok with the bread being left in plastic for the 8am service and that Carlton Olson or Julie Sanders will not need to prepare bread for the 8am service.

**GLENVIEW COMMUNITY CHURCH BOARD MINUTES
SERVICES & SACRAMENTS**

10/2/11 Communion

Person in Charge: Julie Tillman

Bread Cutting: Carlton Olson or Julie Sanders (Julie is backup if Carlton doesn't want to continue being official bread cutter)

Altar Set-up: Cathy Ach

Servers:

1. Aaron Ach
2. Cathy Ach
3. Mij Kritzman
4. Julie Sanders
5. Jeff Wagner
6. Dale Sands
7. Mary Anne Peruchini
8. John Roth
9. Valerie Rosenberg
10. Julie Tillman

• **New Business**

- Cathy Ach briefly described the role of Vice Chair and asked if anyone would be interested in taking on this position. As of yet, no one has agreed to be the Vice Chair. Cathy Ach encouraged all the members to consider the position further.
- Denny Jorgensen offered to serve as Secretary and will start with the October meeting.
- Jeff Wagner agreed to handle changing the paraments. Cathy Ach will coordinate with Jeff Wagner to explain what needs to be done and where the paraments are stored.
- Cathy Ach asked for suggestions on how to manage communion coverage ongoing. One thought was to pair up new members with existing members to cover communion month-by-month. The board agreed this method made most sense. The board will start implementing as new board members have learned to perform the communion tasks.
- Next three meetings will be held 10/11, 11/14 and 12/12.

Closing Prayer

Meeting was adjourned by 8:20 pm.

**Next Services & Sacraments Board Meeting: Tuesday, October 11, 2011 at 7:00 pm.
Room 201.**

Respectfully submitted,
Julie Tillman

Glenview Community Church Youth & Confirmation Board

September 6, 2011

Present: Mark Sawires, Melissa Aki, Debbie Berg, Brian Grad, Stephen Isaacs Julie Bretz Sander

Staff Present: Elizabeth Ciccolini, Reverend Pam Keckler

1. Opening Devotional: Debbie read "The Little Things."
2. Minutes of the August meeting were approved.
3. Mark gave a recap of the Executive Board meeting.
4. Board and staff discussed that students should reach specified levels of attendance in order to participate in PYF trips. The Board unanimously supports this policy change. If slots for PYF events are not filled, 8th grade confirmands may participate.
5. The Board extends its grateful thanks to the GCC community for generous support of Youth and Confirmation events. Through gifts, scholarships, and time, GCC members have helped defray the many costs of these events.
6. Rev. Pam suggested that a Small Group for Parents with students in the youth program be formed to give those parents a chance to meet and discuss issues of importance to them. With the Board's approval, Pam will explore this further. The Board suggested possible topics for discussion; Pam welcomes other suggestions for topics.
7. Rev. Pam gave an update on the confirmation classes. The 7th grade class numbers at least 38 and may go higher. The 8th grade class has 21 students. Teachers have been lined up for all classes. Confirmation Sunday is May 6, 2012, at the 10 a.m. service.
8. Elizabeth gave a recap of the Tower Hill Retreat and the Iron Chef event. The Senior Dinner Small Group has started; activity will pick up after the V Show at GBS is over.
9. Upcoming Events
 - Rally Day Mission Project: Michele Monteith has volunteered to shop for Rally Day.
 - Brian volunteered to set up the net for "Game On" September 18.
 - Julie volunteered to deliver birthday bags to the Northfield Food Pantry. An announcement needs to be made to collect items.
 - Debbie will coordinate houses for the "Mugging" progressive dinner on October 2.
 - Hygiene Kits: An announcement needs to be made for collecting items. PYF and the 678 Club will assemble kits on October 9.

10. Fundraising

- 5K Run: For various reasons, this will not be used as a fundraiser.
- Chile Cook Off: The Board supported this idea. Logistics and specifics are unknown at this point. The Board would like to get other boards involved, and possibly make it a family-oriented event at the church. Dates under consideration are 1/29/2012 and 2/12/2012. Mark will lead a subcommittee to explore this further; Mark will need several Board members to volunteer for this subcommittee.
- Just Jewelry: The Board considers this a viable option. Details must be fleshed out before presenting to the Executive Board. Debbie will follow up.
- "Restaurant Night" at Sweet Tomatoes or another restaurant: 15% of receipts from patrons who self-identify on a specific night will go to the Board. Mark will follow up for details.
- Musical Group Concert: Debbie will follow up to determine if this is viable.

11. Meeting was adjourned at 9:15 p.m. after The Lord's Prayer.

Minutes submitted by Stephen Isaacs.