



A YEAR IN REVIEW

Our May Annual Congregational Meeting gave our ministry leaders and staff an opportunity to reflect on the past year—many of those reflections were included in the packet handed out at the May 18 meeting. While verbal reports from all our various ministries would have taken a very long time to get through, simply handing out written reports assumes everyone will take the time to read and celebrate all that has taken place at Glenview Community Church over the past year.

And there is *so much* to celebrate! So much happens within our church community and within our building—day to day, week to week, let alone over the course of an entire year! The annual meeting packet helps create a fuller picture of all that has unfolded—and if you haven't had a chance to read it yet, I encourage you to get a copy.

What makes the annual report especially meaningful is that it captures so many different perspectives from within our church. Gary Wendt shares his perspective on Worship and Music. Dave Aki reflects on building and operations. Rev. Jim shares his reflections as Senior Minister. Each of our five ministries reports from its own area of focus. And when you read these different reports together, you begin to see a fuller picture emerge—one that tells the story of a vibrant, faithful, and active community.

What I imagine you'll see is this: there is so much to celebrate.

This year, I've been working with our Generosity Team to lift up the theme of belonging at GCC—to ask the questions, *Where do you feel a sense of belonging?* and *How can we create a deeper sense of belonging for others?* These are the questions that guide me in my ministry. While the annual meeting packet might make it look like we did a lot (and we did!), the primary goal of the church is not efficiency or productivity. We are not called to simply create longer lists of accomplishments year after year.

Our mission is to love God's people well.

So, when we look back on our year, perhaps that's the mark

by which we evaluate our life together. *Have we loved God's people well?* And how will we continue to do so in the year ahead?

I shared a prayer at the start of our annual meeting, and I offer it here again as my prayer for all of us:

God, we thank you for Glenview Community Church.

We thank you that we have found a sense of belonging in this church community.

We thank you for the generations before us who also found belonging here.

We thank you for the vision you have given us—to be a church where *all* can belong.

We thank you for the leaders of this congregation—lay leaders, youth volunteers, staff, committee chairs and members, and the hundreds of people who show up in so many ways to care for this church and the community that calls it home.

We thank you especially for your faithfulness to us over the past year—for the packet full of “God sightings” we have seen and lived together since this time last May.

You are so good. It is a joy to be part of a community that seeks to be your love in the world.

Guide us today and in the days to come.

Humble us today and in the days to come.

Inspire us today and in the days to come.


Help us to seek your vision for us and to live out your radical and transforming love.

Amen.

~Rev. Abigail

A YEAR IN REVIEW

Youth Programs at Glenview Community Church




After a year of fellowship, faith, fun and service, youth group wrapped up with an ice cream outing to Dairy bar and a pizza celebration in the youth room! We look forward to our youth Mission Trip in June and being together again in the Fall!



GODLY PLAY

Our first full program year of Godly Play has provided space for Faith Formation for children during Sunday morning worship!

CONFIRMATION



Our Confirmation year culminated with the celebration of Confirmation and Youth Sunday on May 4th! We confirmed 10 students!

PUPPETS



Our GCC Puppeteers wrapped up their year with a fabulous presentation in the sanctuary during worship! The presentation was complete with live music, laughter and important messages about FAITH!

VOICES OF GCC



Our Children's Choir led by Katelyn Ornduff participated in worship, our Toys for Tots Concert, our Christmas Eve service and ended the year with their Children's Musical: The Promise Cruise!

EVENTS



GCC Families, children and adults participated in intergenerational activities all year long- such as Family Fall Festival, Boards & Bites, Chili Cookoff, and MLK Day of Service

SUMMER CHURCH SCHOOL!

Don't miss out! Summer Church School and Nursery Childcare *will* be offered over the summer during 10am Worship! Children ages 4-12 will discover the power of Jesus' parables during these Summer Sundays!

SENIOR MINISTER'S OCCASIONAL COLUMN

Christian Science in Glenview (1948-2025)



Some of you may know that the First Church of Christ, Scientist, in Glenview, at 1333 Glenview Road (opposite the North Shore Country Club) closed its doors permanently in early 2025. It was sold in April and is being converted into a private residence. This is the fate of many small churches since the pandemic in 2020. As GCC has long valued its ecumenical and interfaith links, I thought I'd share something about Christian Science and its place in the Village of Glenview.



Christian Science (officially the “Church of Christ, Scientist”) was founded in 1879 by Mary Baker Eddy (1821-1910) who is pictured top right. Eddy was born in Bow, New Hampshire, and raised in a strict Congregationalist church. Note that one of the predecessor denominations that formed the United Church of Christ in 1957 was the Congregational Christian Churches – originally founded by New England Puritans. As an adult, Eddy rejected this conservative form of Protestant Christianity.

In the 1800s, American Protestantism produced several revivals and new religious movements. Eddy was strongly influenced by the New Thought movement, sometimes referred to as the metaphysical school. Eddy wrote *Science and Health with Key to the Scriptures* in 1872 which is a foundational text for the church alongside the Bible. The church favors the King James Version. The “Church of Christ, Scientist” was chartered in Massachusetts in 1879 with its headquarters in Boston – the main church complex is known as Mother Church. Christian Science, while strongly influenced by Eddy’s Congregationalist upbringing, differs markedly from mainstream Christianity. The stated aim of Christian Science is to “commemorate the word and works of the Master (Christ Jesus), and to reinstate primitive Christianity and its lost element of healing.”

For Christian Scientists, God is not personal, but rather an all-encompassing principle of life, truth, and love. Matter, including the physical body, is not considered a real entity but rather an illusion of the mortal mind. Reality consists only of God and the mind. Christian Scientists believe that healing can be achieved through prayer and a spiritual understanding of God's all-encompassing power. However, modern medicine is not forbidden, and many members do seek such care. The doctrine of the Trinity is not accepted, but Jesus is held to be God’s Son and the Holy Spirit is deemed to be the divine Comforter. The virgin birth and resurrection of Jesus are understood as purely spiritual events since the material body is an illusion. Humanity (or rather the human soul) is believed to be created in God’s image.

Christian Science has no sacraments in the traditional sense. Communion is purely spiritual without bread and wine. Water baptism is not practiced as baptism is also understood to be spiritual. While the emblem of the church uses a cross and crown, Christian Science churches, which can be grand or simple, have no religious imagery. There are no ordained clergy, but lay people can serve as Reader (leading services) or Practitioners (leading prayers for the sick). Sunday worship consists of hymns, music, readings, prayer, and a sermon. God is usually addressed as “Father-Mother God.” The church’s worldwide membership is unknown but is estimated to be about 100,000 with most members in the United States. The denomination has substantial financial assets allowing it to operate 2000 Christian Science Reading Rooms worldwide. Advanced education is highly prized. The church operates a global newspaper, the *Christian Science Monitor*, founded in 1908, which has won numerous Pulitzer Prizes. It was published daily until 2008 and now is published weekly.

The Glenview church began with 46 members meeting at the Rugen School in 1948. In 1954, a church was built at 1333 Glenview Road. It was dedicated in 1961 when all debts were paid. The church closed this year after 77 years of existence. There is a Christian Science Reading Room in Evanston with the nearest active church located in Rogers Park, Chicago. There remain twenty Christian Science churches in Chicagoland that are still active.

– Rev. Dr. James Matarazzo

REBUILD TOGETHER

This month, a team from GCC partnered with **Rebuilding Together!** This amazing organization is committed to improving the homes and lives of low-income homeowners by offering free repairs and home improvements to those who need them most. GCC has a history of participating in projects with **Rebuilding Together** and we are excited about continuing that tradition in 2025! We participated in a two-part project in conjunction with Northwestern University. It was a big effort that is broken into two projects. The crew from Northwestern started the project on April 27. GCC did its part on May 3. Our project included handyman projects such as installing a door, painting, sorting/organizing. Thanks to all who came out for this volunteer opportunity right in our own community!



HOW TO CARE FOR LOVED ONE'S FACING DEMENTIA BY REV. DR. JANET ALDRICH

This past month, GCC member Rev. Dr. Janet Aldrich shared her expertise on how to care for loved ones with dementia. Those who gathered were eager and deeply engaged, learning both important facts about the disease and practical tools for caregiving. We are so grateful to Janet for generously sharing her knowledge and passion with our community!



thank you

On May 18th at our Annual Meeting we elected a new slate of lay leaders at GCC! Thank you to our outgoing and incoming leaders for accepting the call to be an important part of ministry at Glenview Community Church!

Outgoing Leadership Positions

JoAnne Peters- *Clerk*
Karen Patterson- *At Large Leadership Council Member, Pastoral Relations Committee*
Leanne Drennan- *At Large Leadership Council Member*
Meredith Estes- *Chair of Congregational Life Ministry*
Phil Gartner- *Congregational Life Ministry, Men's Ministry Breakfasts*
Lumi Stutz- *Chair of Faith Formation & Learning Ministry*
Allan Ruter- *Faith Formation & Learning, Speakers Forum*
Shane Bill- *Mission and Outreach*
Marvin Lutz- *Finance and Resources Ministry, Finance Committee*
Sue Newberry- *Worship and Music Ministry*
Ann Grant- *Worship and Music Ministry, Fellowship*
Laura McNeela- *Worship and Music Ministry*
Cynthia Avery Smith- *GCCNS Leadership Council Member*

A Special Thank You to Susan Johns who has served as our Moderator for the last year. She will stay on Leadership Council as "Past Moderator" for the year to come. Thank you for your leadership Susan!

Incoming Leadership Positions (and Re-Elections)

John Marmet- *Moderator-Elect*
Douglas Berg- *Treasurer*
Sheryl Long- *Clerk*
Mary Ellen Johnson- *At Large Leadership Council Member*
Bill Cooper- *At Large Leadership Council Member*
Scott Lothian- *At Large Leadership Council Member*
Sally Thuresson- *Women's Association Leadership Council Member*
Anne Frerichs- *GCCNS Leadership Council Member*
Terri Morgan- *Chair of Congregational Life Ministry*
Doug McCarthy- *Congregational Life Ministry*
Christopher Gilman- *Chair of Faith Formation & Learning Ministry*
Jim Beavin- *Faith Formation & Learning Ministry*
Shawna Moorad- *Faith Formation and Learning Ministry*
Natalie Banovitz- *Mission and Outreach Ministry*
Cathy Shapiro- *Mission and Outreach Ministry*
Linda Crowder- *Finance and Resources Ministry, Generosity Team Coordinator*
Michael McBride- *Finance and Resources Ministry*
Tom Macfadden- *Finance and Resources Ministry, Capital Projects Committee*
Maren Miller- *Worship and Music Ministry*
JoAnne Peters- *Worship and Music Ministry*
Julie Bretz- *Worship and Music Ministry*

FOOD ON THE FIRST!

Thank you to everyone who brought food for our "Food on the First" collection this past month! Let's keep it up! Bring in non-perishable items during the first Sunday/week of the month and drop them off in the bins outside the chapel and in the Narthex! Let's support Northfield Township Food Pantry!



SPEAKERS FORUM:

CHICAGO CHILDREN'S ADVOCACY CENTER

This past month, we wrapped up this season's Amos Speakers Forum Series with a presentation from Char Rivette, CEO of **Chicago Children's Advocacy Center**. Char shared with us, the important and hopeful work of Children's Advocacy Centers, providing a data-driven analysis of the scourge of child abuse in our city. Her presentation left all present sobered, way more informed, and yet hopeful. Thank you Char!



HEALTHY HINTS

June is National Brain Awareness Month, so I thought we'd focus on ways to nourish this precious organ. The brain needs exercise, social connection, and good nutrition to function at its best.

According to the Alzheimer's Association, over five million individuals in America currently suffer from Alzheimer's, but this number is expected to increase by eleven million people by the year 2050.

Some symptoms of impaired brain health include forgetfulness, poor memory, slow reflexes, poor coordination, and difficulty focusing and/or completing complex tasks. However, a nutritious diet and balanced lifestyle can help stave off these symptoms, which are often associated with old age.

Lifestyle factors that positively affect Neurological Health:

1. Be Social – reduces the likelihood of cognitive impairment
2. Exercise – helps boost memory and coordination
3. Practice Spirituality
4. Learn a new language or join a book discussion group
5. Take up a hobby like painting, playing an instrument, dancing

Foods that positively affect Neurological Health:

1. The Mediterranean Diet
2. Blueberries
3. Dark Chocolate
4. Avocados
5. Walnuts
6. Green Tea



DID YOU KNOW?

The Glenview Public Library hosts a "Great Books Discussion Group," where readers of great works discuss questions and their answers in a friendly, welcoming setting. The group meets the Second Wednesday of every month from 10–11:30 am. See Glenviewpl.com for details.

This article was adapted from "Nourish The Brain," Institute for Integrative Nutrition HCTP,, October 2022. For all questions or complimentary Health Coaching, please contact Laura O'Mera, Integrative Nutrition Health Coach at 847.814.1565, laura@bramhall.health or visit www.bramhall.health.

Celebrate Pride Month with GCC!

Sunday, June 1st- GCC walks in the Buffalo Grove Pride Parade!

Pride Month Book Study: Discussion on Monday nights (June 2, 16, and 30) at 7pm in the Commons. We will be reading "Outside the Lines" by Mihee Kim-Kort. *Get a copy of the book and read chapters 1-4 before our first meeting.*



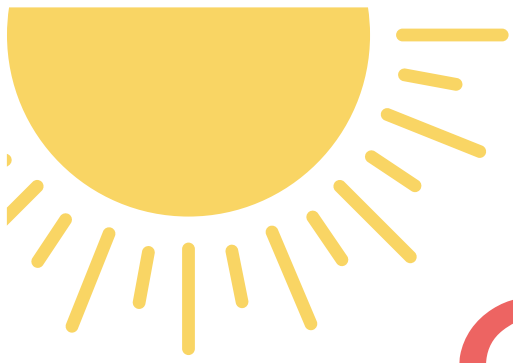
Sunday, June 22nd- Wear your rainbows to church for our Pride Sunday Worship Service (Join us immediately after service for "Pride Activation" flag waving on Glenview Road!)

Check out these events put on by neighboring UCC churches!

Saturday, June 7th (1-5pm): Community Pride Celebration at Christ Church UCC Des Plaines.

Sunday, June 8th (2-5pm): Interfaith Family Pride Festival at Raymond Park in Evanston

Did you know? In 2010 our church voted to approve our Open and Affirming Covenant, promising to be a community that is radically inclusive and affirming- especially of LGBTQ+ individuals.



MON-THURS

4-7
August

JOIN US AT

GODLY PLAY CAMP!

9AM-
11AM

Age
3-12
years

GODLY PLAY STORIES, MUSIC, SNACKS
CRAFTS, GAMES AND MORE!

COST: \$25 PER CHILD



REGISTER A
CHILD HERE!

SIGN UP AS A
HELPER HERE!

1000 ELM STREET,
GLENVIEW

FIND YOUR
GLENVIEW
COMMUNITY
CHURCH

GLENVIEW
FIND YOUR COMMUNITY
CHURCH

1000 Elm Street
Glenview, IL 60025-2897
Phone: (847) 724-2210
Web: gccucc.org
Facebook: facebook.com/
GlenviewCommunityChurch/

Nonprofit
Organization US
Postage
PAID
Glenview, IL
Permit NO. 41

RETURN SERVICE REQUESTED

SENIOR MINISTER

Rev. Dr. James Matarazzo, Jr.

BROADCASTER DEADLINES

July 2025: June 23

August 2025: July 25



Vétheuil in Summer, 1880 by Claude Monet